



# INSTALLATION INSTRUCTIONS

Accessory

**BUSBAR KIT**  
P/N 0SS27-HL6-A10

Application

**SXS1000S2X/S2R/  
S4X/S4R**  
After 22YM

Publication No.

**MII 17811**

Issue Date

**June 2023**

**Honda Dealer: Please give a copy of these instructions to your customer.**

**Not Applicable For These 2023 Talon "S" Series**

- **SXS1000S2XS/S2RS**
- **SXS1000S2XDS/S2RDS**
- **SXS1000S4XS/S4XDS**

**For 2023 Talon "S" Series the BUSBAR KIT  
required is 0SS27-HL6-A00.**

## TOOLS REQUIRED

Torque driver

Socket (8 mm)

Socket (10 mm)

#1 phillips bit

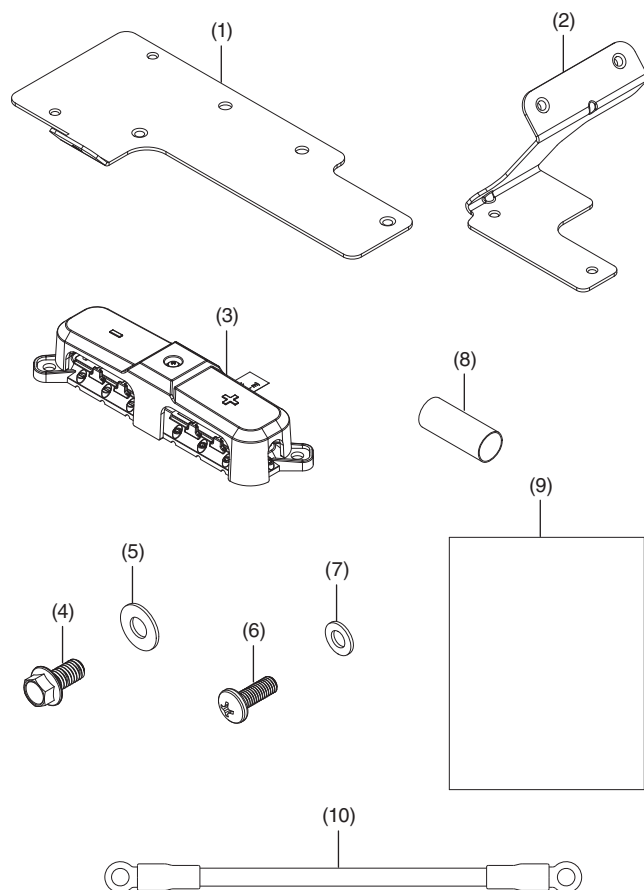
#2 phillips bit

Heat gun or electrical tape

## TORQUE CHART

Tighten all screws, bolts, and nuts to their specified torque values. Refer to the Service Manual for the torque values of the removed parts.

## PARTS LIST



No.	Description	Qty.
(1)	Main busbar mounting plate	1
(2)	Busbar lower support bracket	1
(3)	Busbar	1
(4)	6 × 12 mm flange bolt	4
(5)	6 × 14 mm washer	4
(6)	Phillips head screw	2
(7)	5 × 10 mm washer	2
(8)	Heat shrink	2
(9)	Installation Instructions URL	1
(10)	Harness, #6 AWG ground cable (28")	1

## INSTALLATION

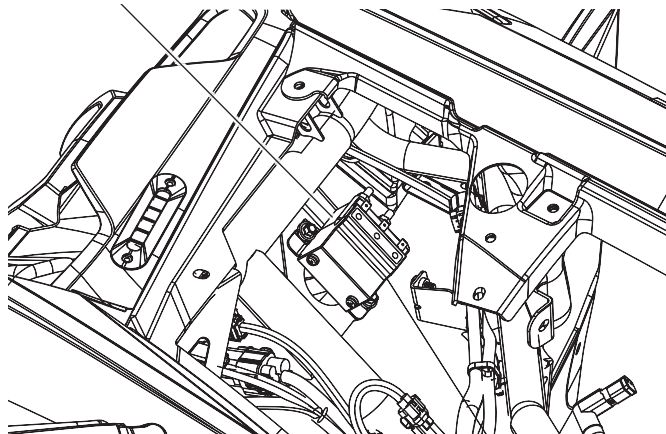
1. Refer to the vehicle service manual and remove the following parts:

- Hood
- Rear hood bolt
- Rubber splash guard
- Ground cable connection to battery

### If vehicle is equipped with a winch:

2. Locate the winch contactor.

WINCH CONTACTOR



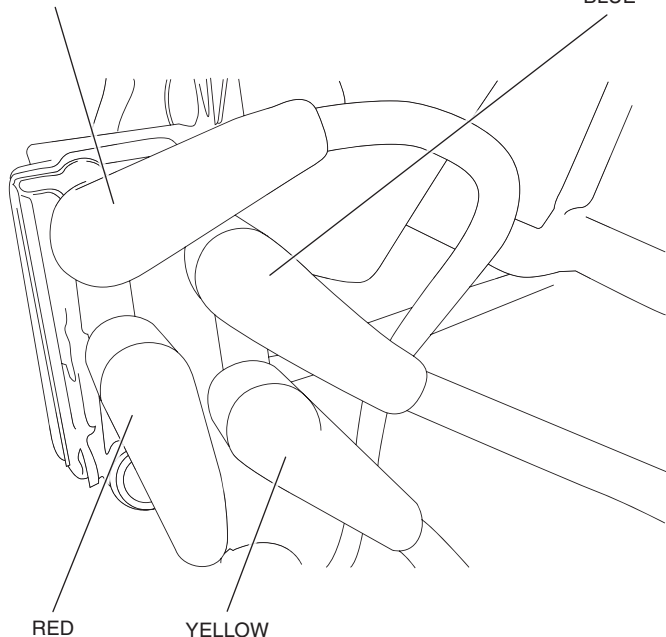
3. Pull the rubber terminal boots off the red and black power cable terminals at the contactor.

BLACK

BLUE

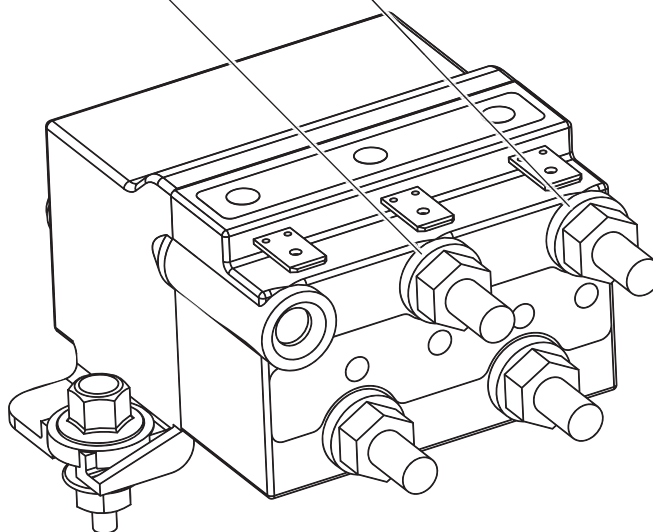
RED

YELLOW



4. Remove the battery cables from the contactor by loosening the 6 mm nuts. Set nuts, lock washers and cables aside for reassembly later.

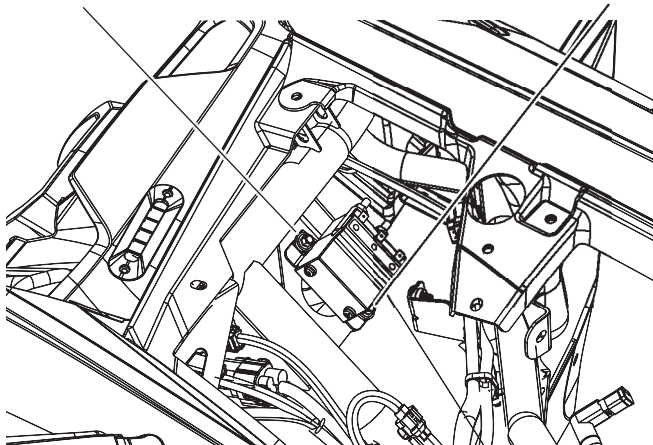
NEGATIVE (-)  
POSITIVE (+)



5. Remove the two factory 5 mm bolts, washers and nuts attaching the contactor to the frame, set contactor and hardware aside for later use.

5MM BOLT

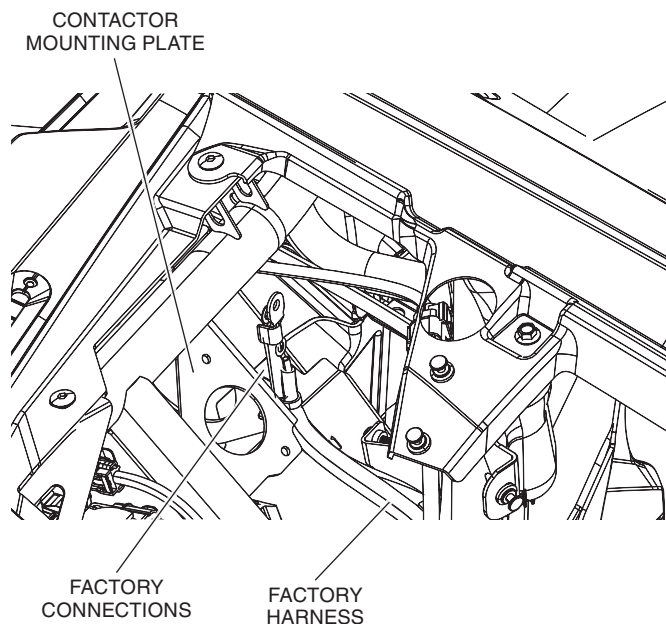
5MM BOLT





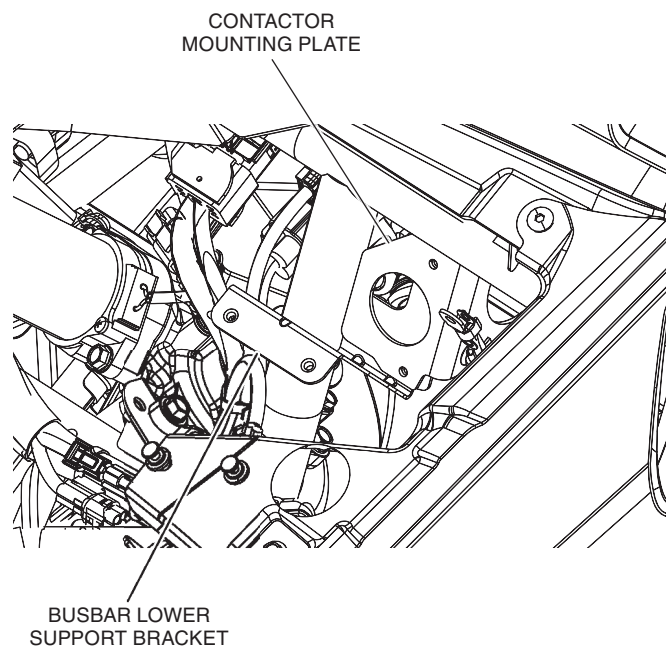
**If vehicle is not equipped with a winch:**

6. Unclip the power (+) connection near the contactor mounting plate and move the wire out of the way.

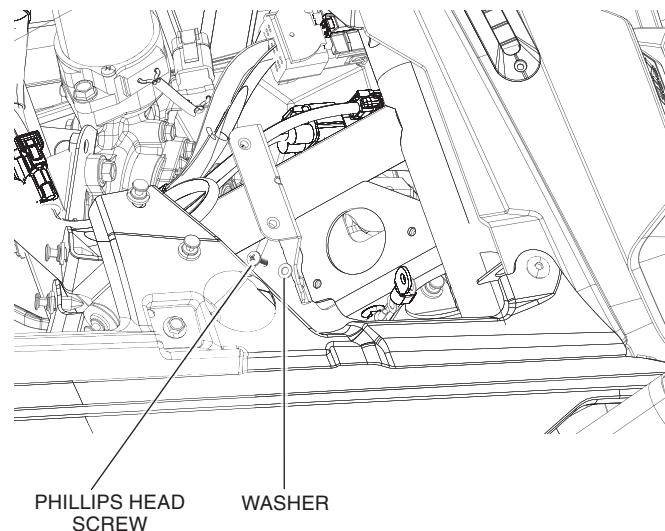


**ALL APPLICATIONS:**

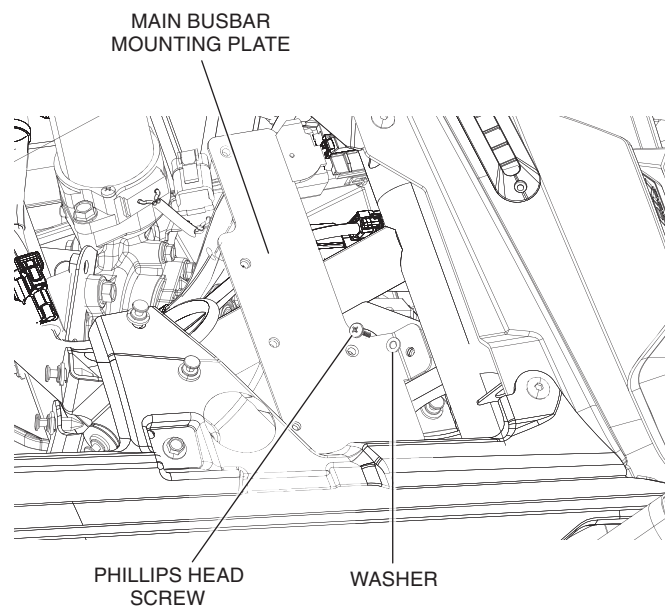
7. Slide the busbar lower support bracket from the bottom behind the factory winch contactor mounting plate.



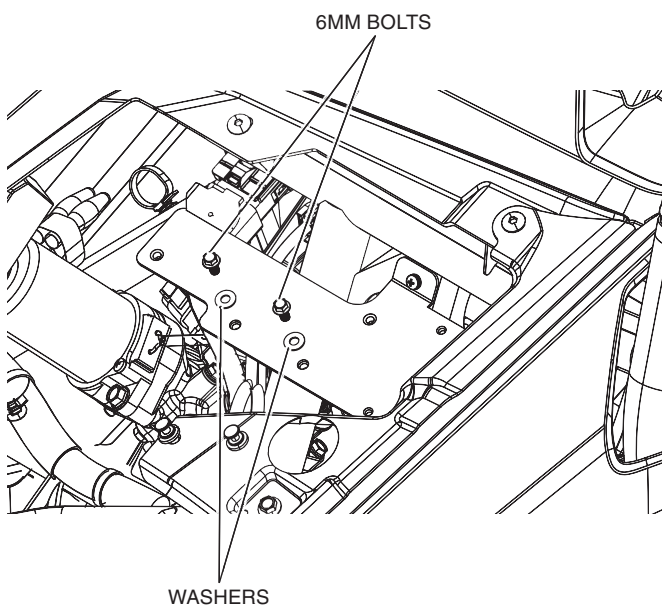
8. Attach the busbar lower support bracket with a phillips head screw and washer from the front of the bracket.



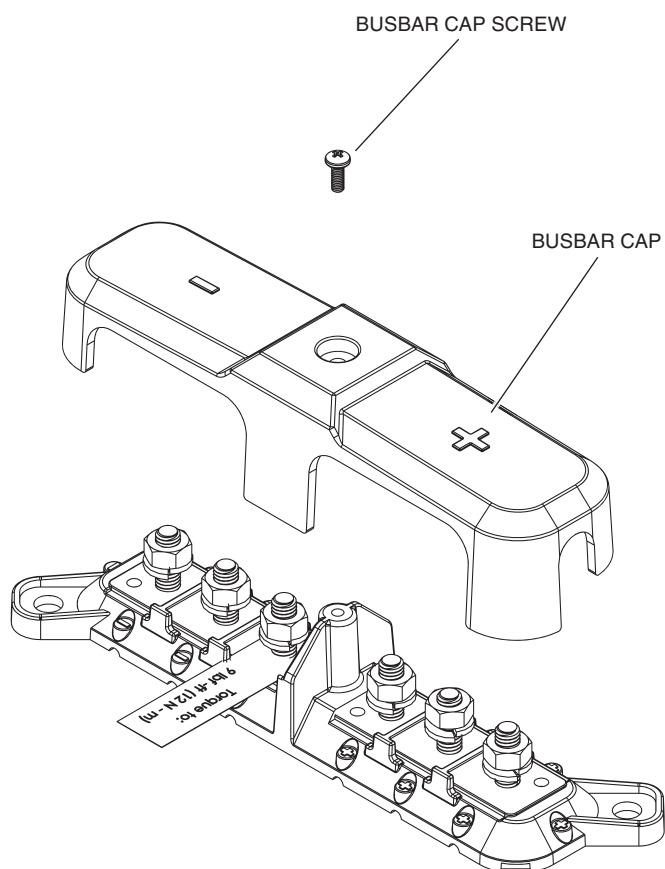
9. Using a phillips head screw and washer secure the main busbar mounting plate to the sub bracket.



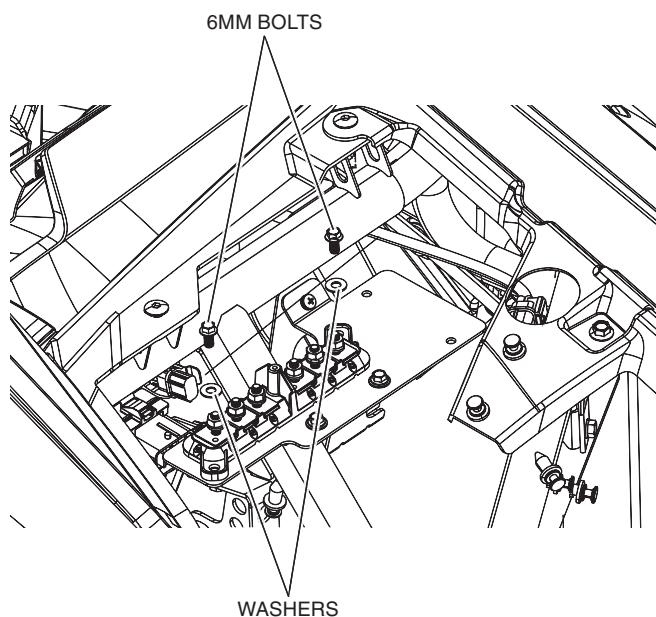
10. Attach front of the main busbar mounting plate to the busbar lower support bracket with two 6 mm bolts and washers provided.



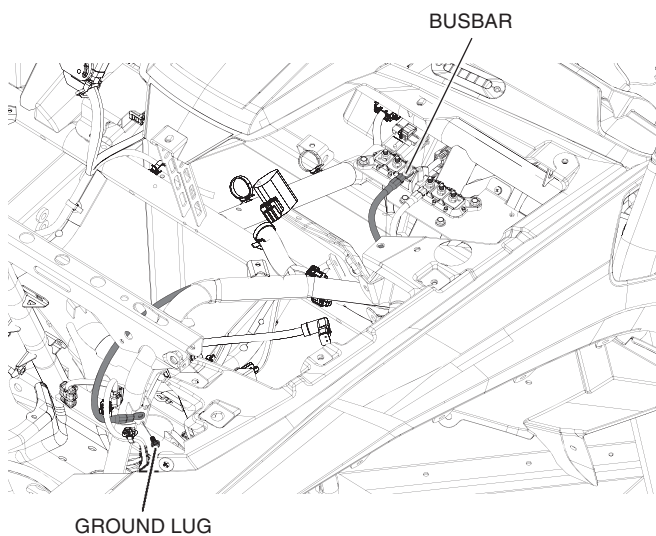
11. Remove the busbar cap screw and cap from the busbar module.



12. With the positive terminals on the driver's side, mount the busbar module using two 6 mm bolts and washers.

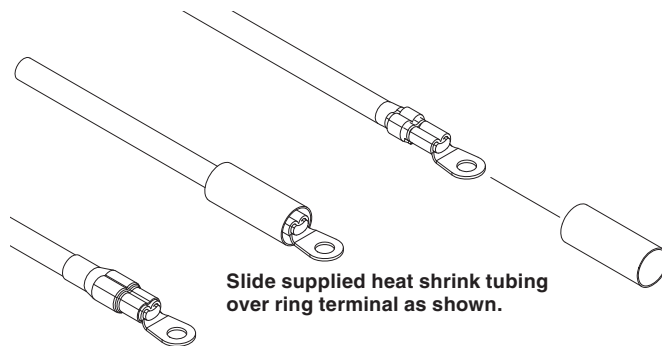


13. Install supplied ground cable to the negative (-) terminal on the busbar as shown. Torque nuts to 12 N·m (9lbf·ft). Route opposite end of negative (-) cable to grounding lug located on the vehicle. Attach to the ground lug located on the vehicle as shown.



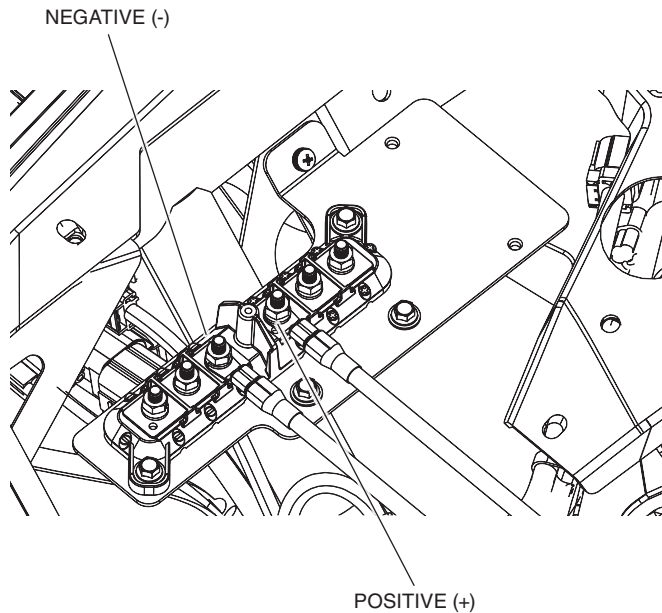
**If vehicle is not equipped with a winch:**

14. Locate the factory positive (+) connector from step 6. Use the supplied heat shrink and install over the connector as shown. Electrical tape can be used as a substitute for heat shrink.



Once in place. Apply heat shrink until tubing is tightly covering the crimped section of ring terminal.

15. Connect the factory positive (+) cable connector to the busbar as shown in the image.

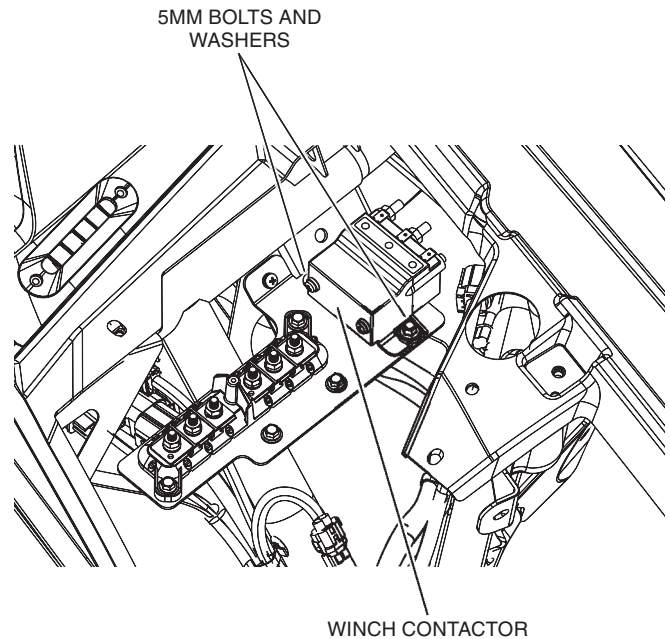


**Torque nuts to 9 lbf-ft (12 N·m).**

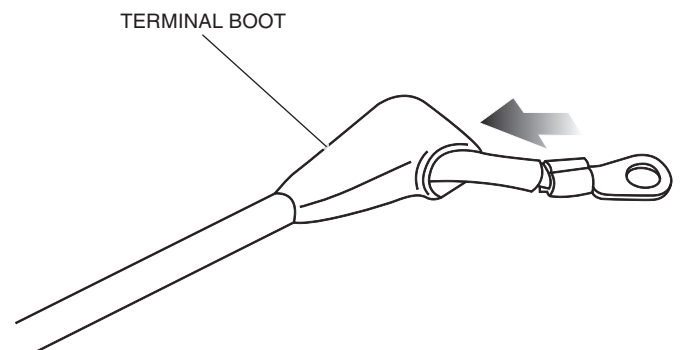
**⚠ WARNING: Do not exceed the recommended torque specs or damage can occur to the busbar module .**

**If vehicle is equipped with a winch:**

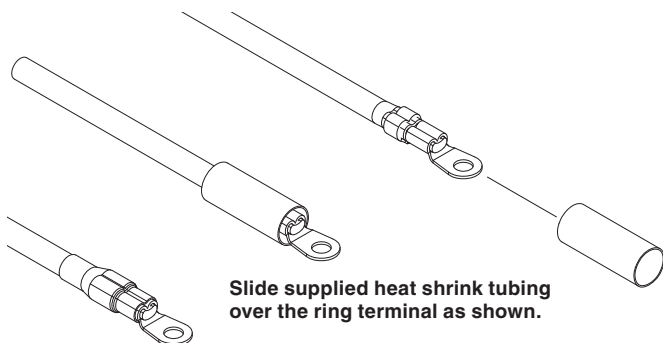
16. Re-mount the contactor to the top of the main bus bar mounting plate using the two pre-threaded 5 mm holes. Take the factory 5 mm bolts and washers removed in step 5 and thread contactor to plate. Discard the factory nuts.



17. Locate the factory positive (+) and negative (-) cable connectors removed from winch contactor in step 4. Remove the rubber terminal boot over the ends of each cable as shown.

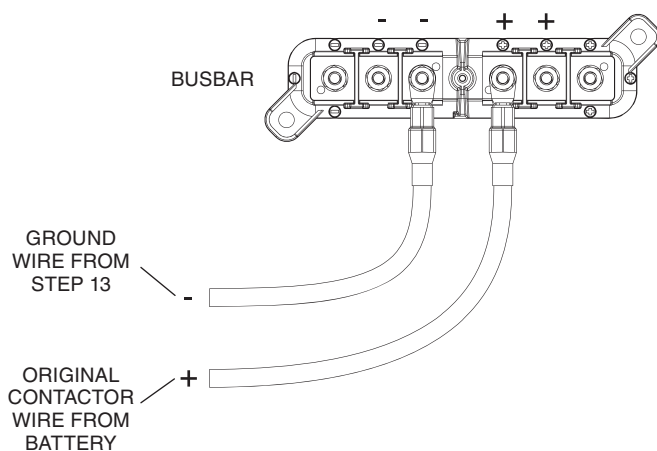


18. Use the supplied heat shrink and install it over the factory contactor positive (+) and negative (-) cable connectors as shown. Electrical tape can be used as a substitute for heat shrink.



Once in place. Apply heat shrink until tubing is tightly covering the crimped section of ring terminal.

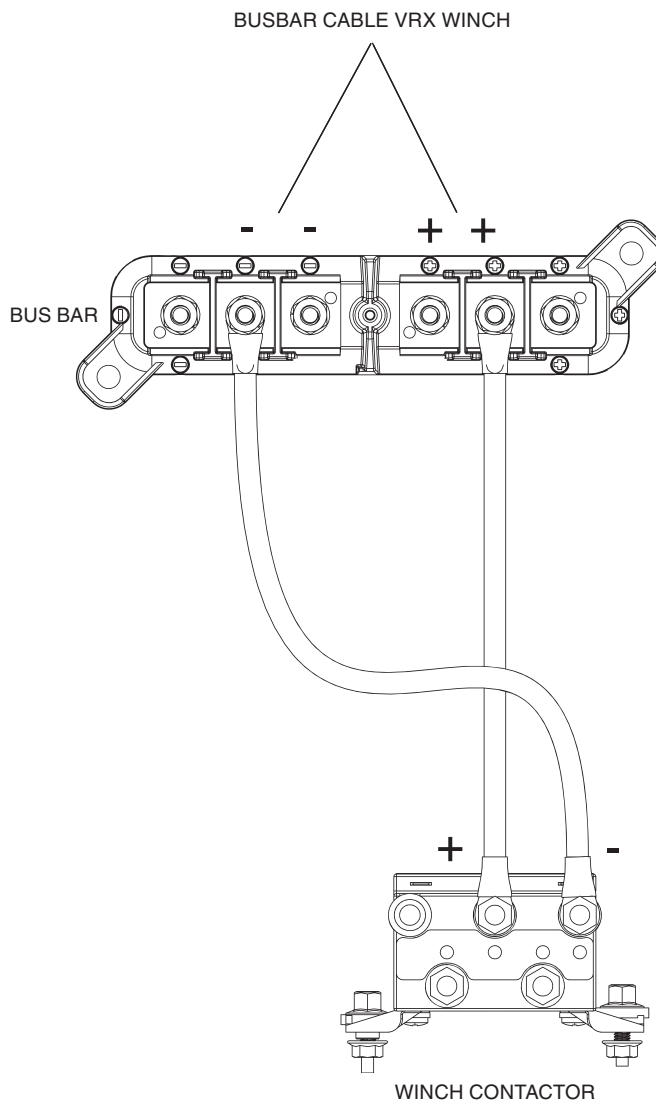
19. Connect the positive (+) contactor wire from the battery to the busbar as shown in the image.



Torque nuts to 12 N·m (9 lbf·ft).

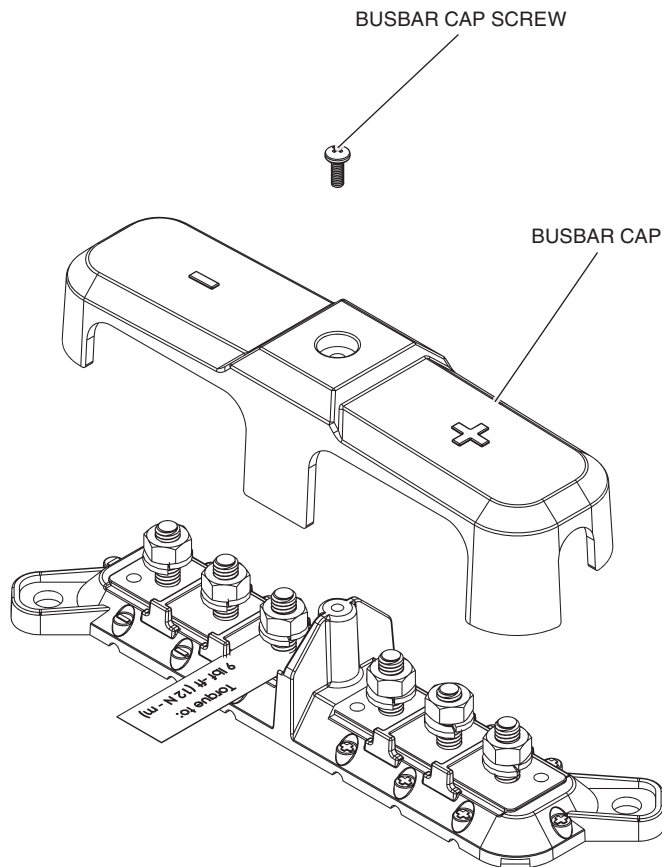
**⚠ WARNING:** Do not exceed the recommended torque specs or damage to the busbar module can occur.

20. Use busbar cables (sold separately) and connect the positive (+) and negative (-) wires to the busbar as shown in the image. Torque nuts to 12 Nm (9 lbf·ft) . Connect the opposite ends of the cables to the winch contactor using the factory 6 mm nut and washers previously removed in step 4.



**ALL APPLICATIONS:**

21. Reinstall the busbar cap and cap screw.



22. Reinstall the following parts in accordance with the vehicle service manual.

- Hood
- Rear hood bolt
- Rubber splash guard
- Ground cable connection to battery