



# INSTALLATION INSTRUCTIONS

Accessory

REAR SPEAKER MOUNT KIT  
P/N 0SS23-HL4-A00

Application

SXS1000M3/M5/M6

Publication No.

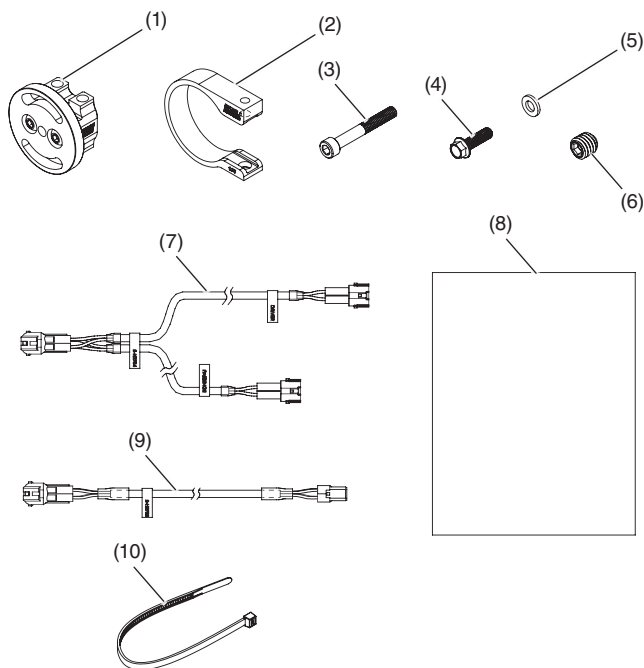
MII 17762

Issue Date

Revision: August 2022

Honda Dealer: Please give a copy of these instructions to your customer.

## PARTS LIST



| No.  | Description                       | Qty |
|------|-----------------------------------|-----|
| (1)  | Swivel adaptor mount              | 2   |
| (2)  | Ring clamp, 1.75 in               | 4   |
| (3)  | 5 mm allen bolt M6 × 45 mm long   | 4   |
| (4)  | 8 mm flange bolt, M6 × 20 mm long | 4   |
| (5)  | M6 flat washer                    | 8   |
| (6)  | M6 set screw                      | 8   |
| (7)  | Speaker Y-cable                   | 1   |
| (8)  | Honda, instructions               | 1   |
| (9)  | Audio extension cable             | 1   |
| (10) | Zip tie, 10 in                    | 5   |

## TOOLS REQUIRED

Torque wrench or driver

Allen wrench (5 mm)

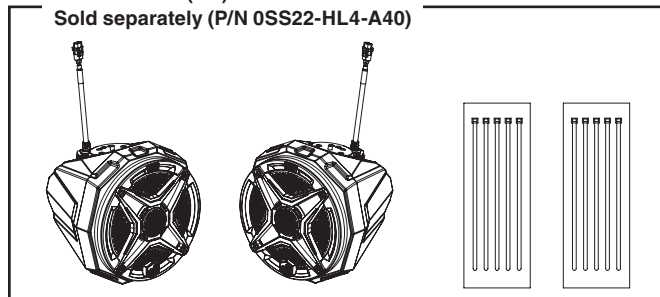
Socket (8 mm)

Trim clip removal tool

Tape

### 2 SPEAKERS (RR)

Sold separately (P/N 0SS22-HL4-A40)

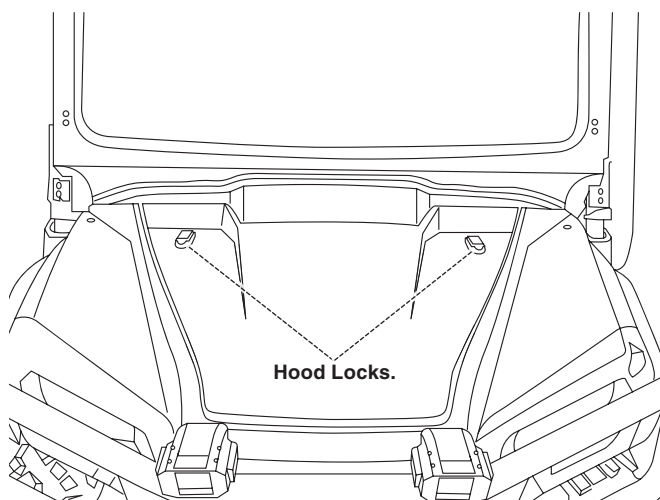


## TORQUE CHART

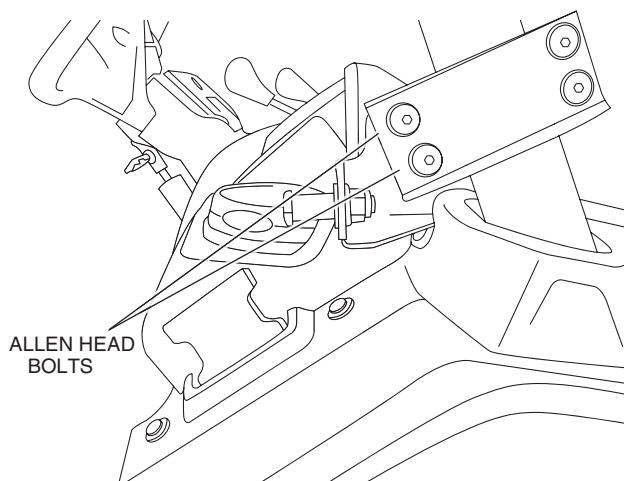
| Item             | N-m | Kfg.m | lbf.ft |
|------------------|-----|-------|--------|
| 8 mm flange bolt | 7.8 | 0.8   | 5.8    |
| 5 mm allen bolt  | 7.8 | 0.8   | 5.8    |

## REAR SPEAKER INSTALLATION

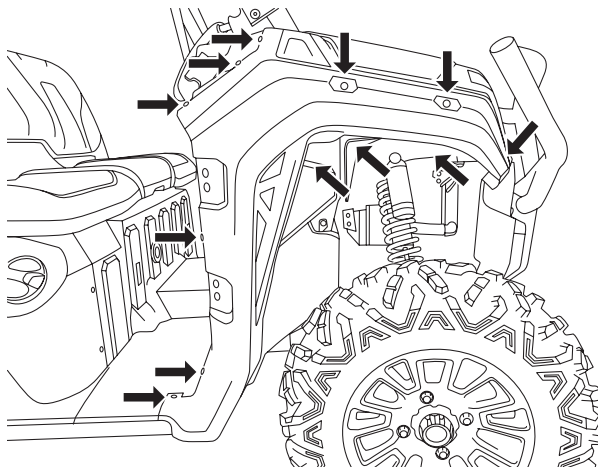
1. Remove the hood by twisting the two hood locks and pulling the hood forward and off the vehicle.



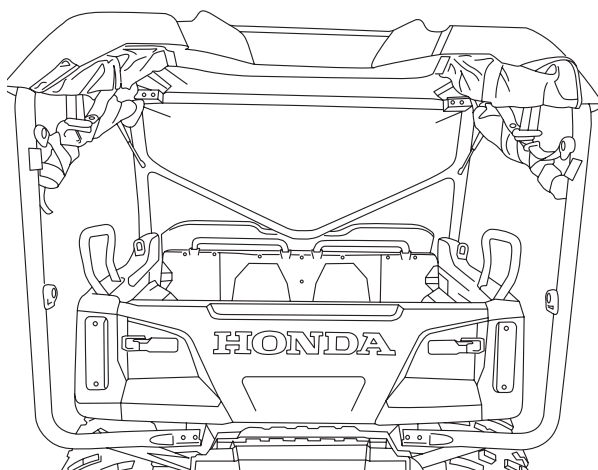
2. Loosen the two (2) Allen head bolts located on the passenger side front door latch to gain access to the trim clip.



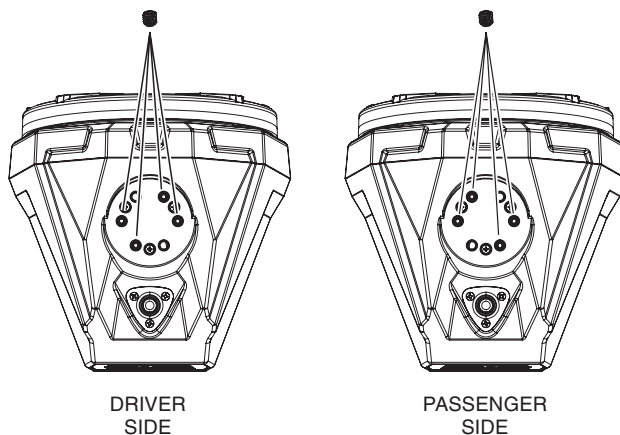
3. Remove twelve (12) trim clips from passenger side front fender and remove.



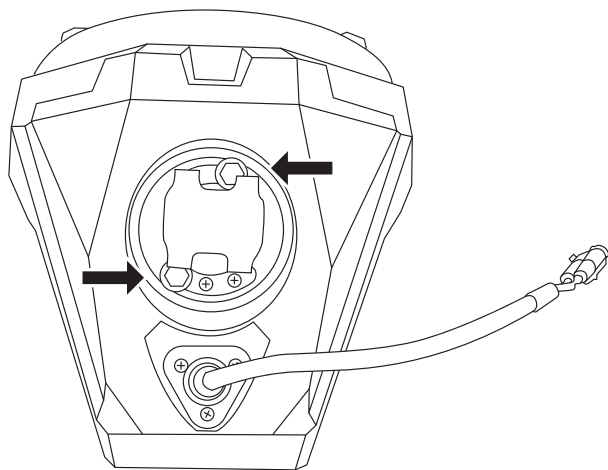
4. Undo any accessories that are blocking access to driver and passenger rear down-tube. Roll up the rear window netting and secure out of the way.



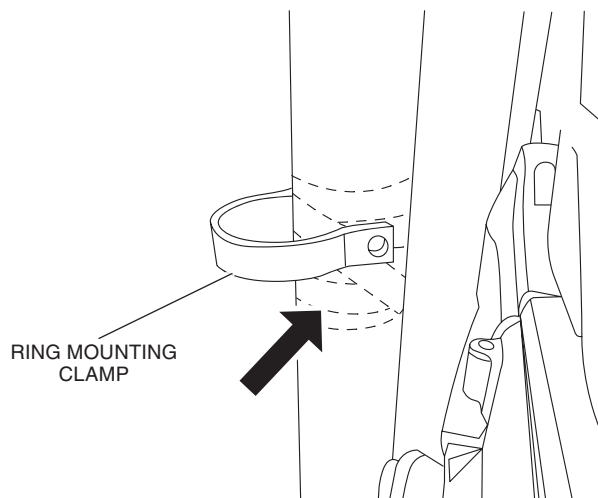
5. Install four (4) Set Screws into each speaker pod in the locations shown.



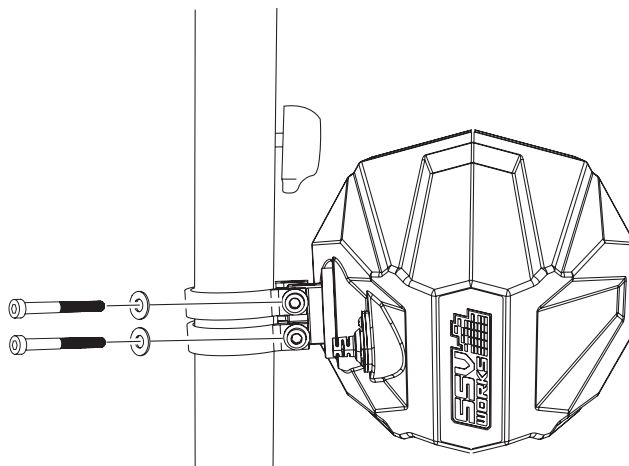
6. Loosely install the swivel adapter mount to the cage mount pod using the two (2) supplied M6 hex head bolts, two (2) washers and an 8 mm wrench. You will fully tighten these in Step 11.



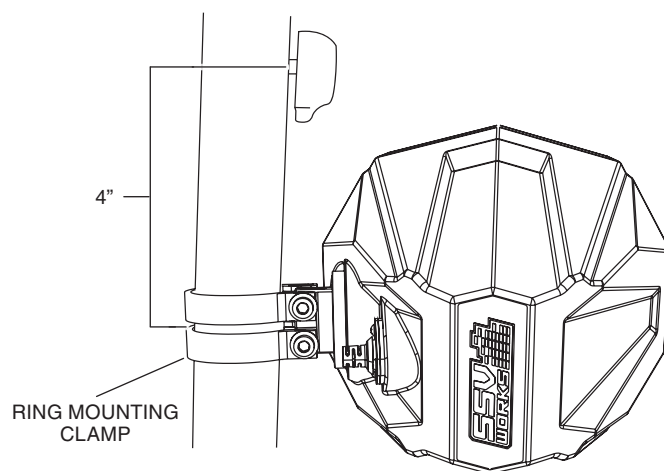
7. Place both ring mounting clamps on the cage by wrapping it with a plastic bag or using masking tape to prevent scratching.



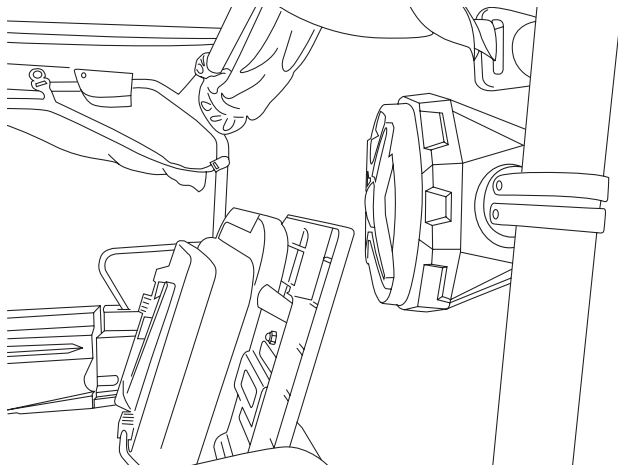
8. Place the cage mount pod in its final mounting location and secure to the clamps using the two (2) M6 Allen head bolts and washers with a 5 mm Allen wrench.



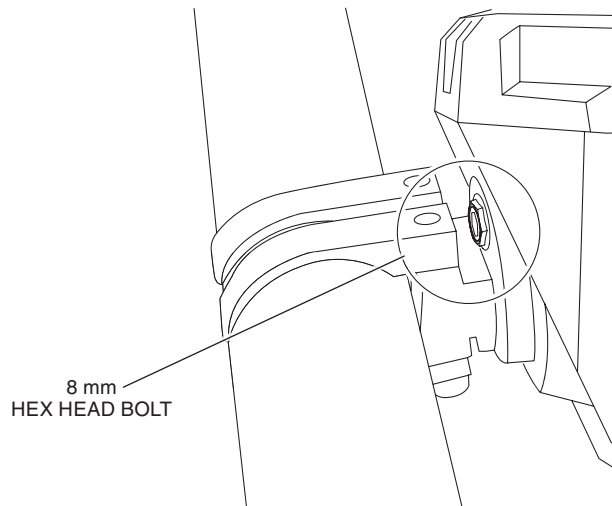
9. Adjust the speaker so the center of the ring clamps is 4" below the window net mounting bolt and the speaker pod. Aim the speaker towards the center of the front roof crossbar.



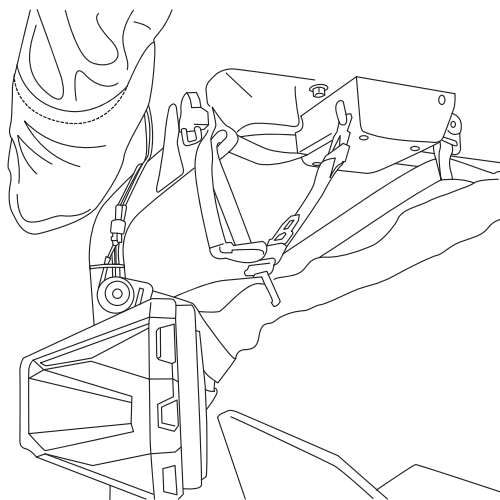
10. Raise the rear seat to check clearance, adjust if needed.



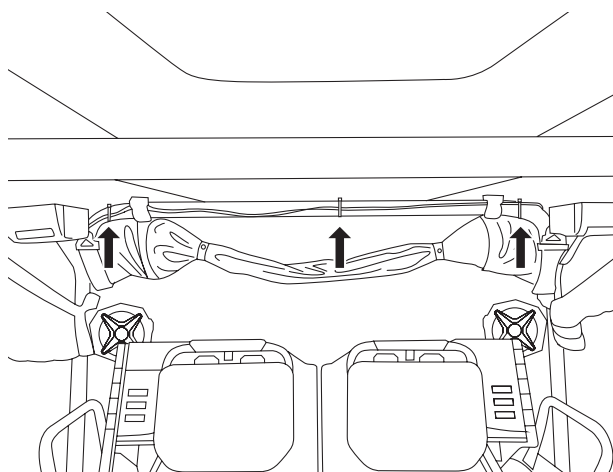
11. Secure the cage pod in its final location by tightening the two (2) M6 hex head bolts on the swivel adapter mount from Step 6 with an 8 mm wrench.



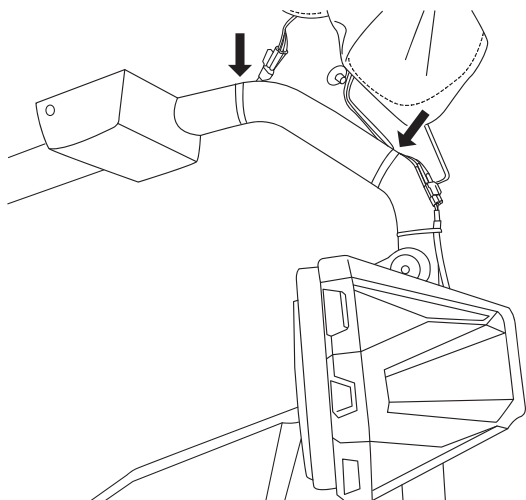
12. Run the driver's side leg of the Speaker Y-Cable over the rear roof cross bar and plug into the cage pod's pig tail. Zip tie as needed.



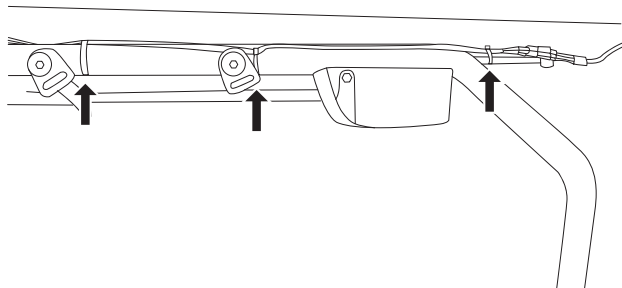
13. Run the cable across the rear roof bar. Run under the Velcro straps of the soft top if equipped and zip tie to the cage in marked location. If equipped with a roof, route cables around any roof clamps and zip tie as needed.



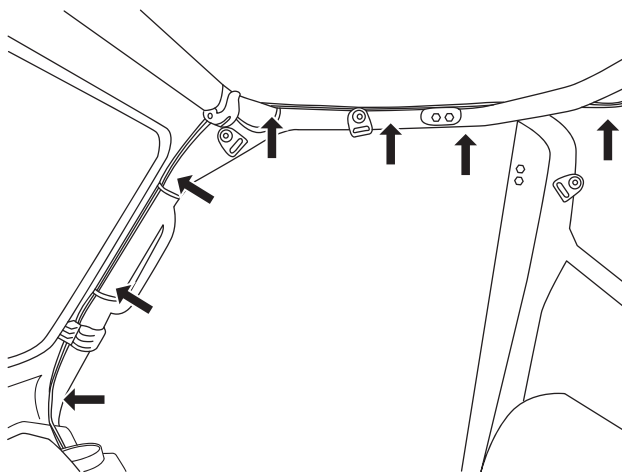
14. Run passenger leg of the speaker harness over the rear roof cross bar and plug into the cage pod's two-pin connector and zip tie in the marked locations.



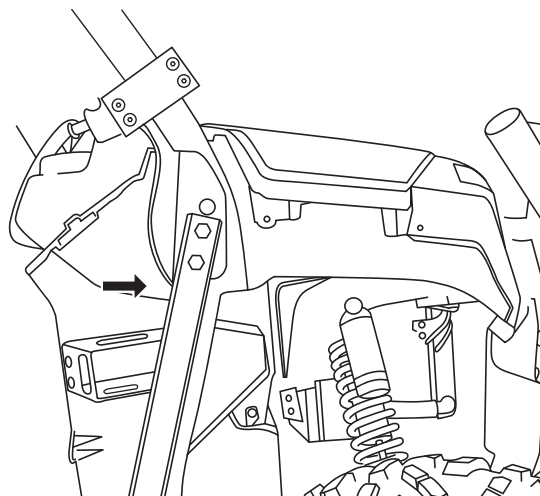
15. Plug in the Audio Extension Cable into the Rear Speaker Harness. Run along the passenger side roof bar and zip tie in the marked locations. If equipped, run the harness under all soft top straps.



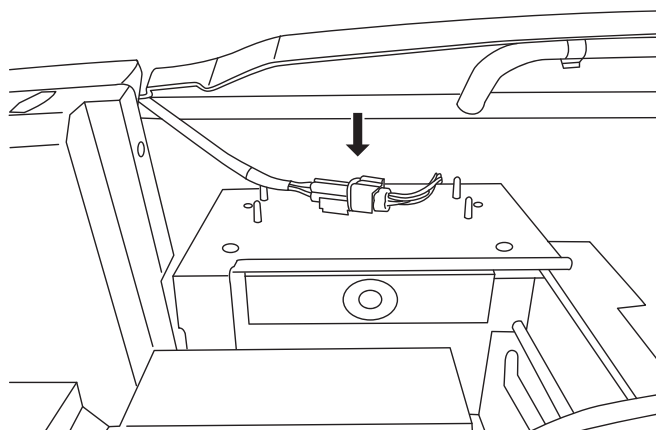
16. Run the Audio Extension Cable to the A pillar and down to the dash. Zip tie as needed.



17. Run the cable between the dash and the A pillar into the fender cavity.



18. Run the Audio Extension Cable into the under-hood cavity and connect to the Rear Speaker Output of the radio MCU. Bundle and zip tie any excess length in the fender cavity.



19. Reinstall Hood.