



# INSTALLATION INSTRUCTIONS

Accessory

DCT SHIFT PEDAL  
P/N 08U70-MKS-E50

Application

CRF1100D/D4

Publication No.

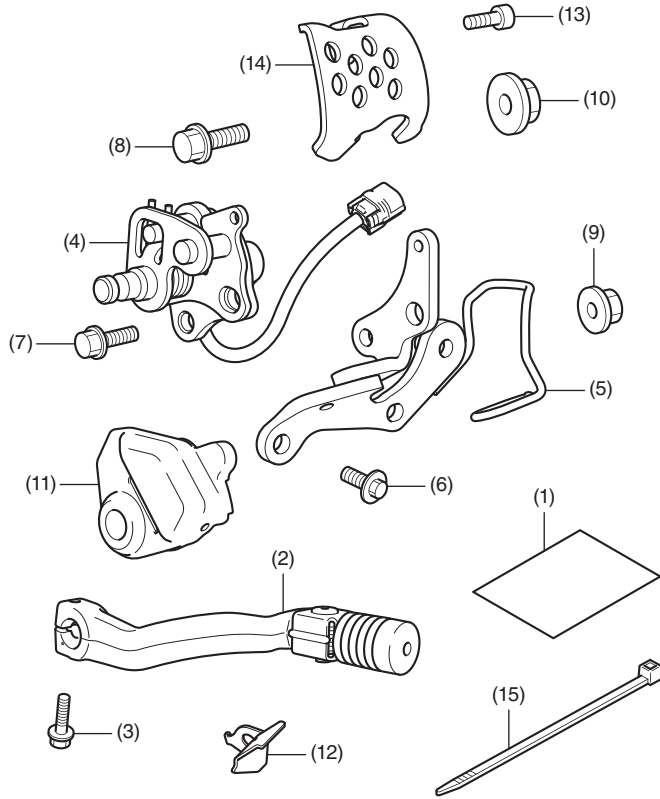
MII 17351

Issue Date

February 2020

**Honda Dealer: Please give a copy of these instructions to your customer.**

## PARTS LIST



No.	Description	Qty
(1)	Installation Instruction URL	1
(2)	Gear change pedal	1
(3)	6 mm flange bolt	1
(4)	Gear change switch	1
(5)	Shifter unit stay	1
(6)	8 mm SH flange bolt	2
(7)	8 mm flange bolt	1
(8)	10 mm flange bolt	1
(9)	8 mm flange nut	1
(10)	10 mm flange nut	1
(11)	Shift cover	1
(12)	Harness stay	1
(13)	6 mm socket bolt	1
(14)	Pedal shift cover	1
(15)	Wire tie	7

## TOOLS AND SUPPLIES REQUIRED

- Socket (10, 12 and 14 mm)
- Ratchet
- Box-end wrench (12 and 14 mm)
- Open-end wrench (12 and 14 mm)
- Hex wrench (5 mm)
- Snips
- Marker
- Ruler
- Torque wrench

## TORQUE CHART

Tighten all screws, bolts, and nuts to their specified torque values. Refer to the Service Manual for the torque values of the removed parts.

Item	N·m	kgf·m	lbf·ft
6 mm socket bolt	10	1.0	7
6 mm flange bolt	10	1.0	7
8 mm SH flange bolt	22	2.2	16
8 mm flange nut	27	2.8	20
10 mm flange nut	39	4.0	29

# INSTALLATION

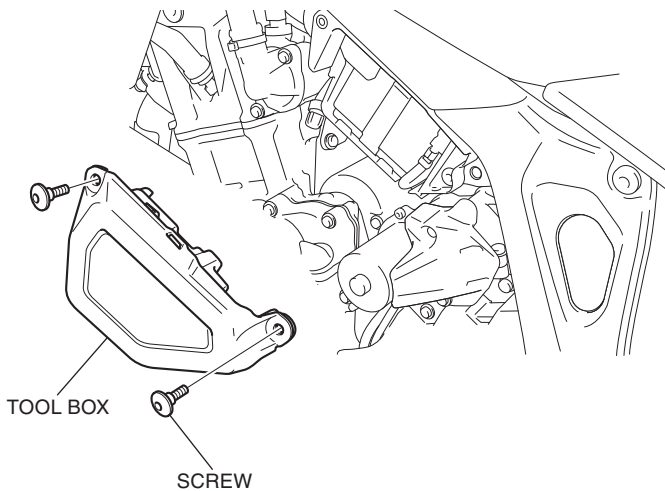
## ▲ CAUTION

- To prevent burns, allow the engine, exhaust system, radiator, etc., to cool before installing the accessory.

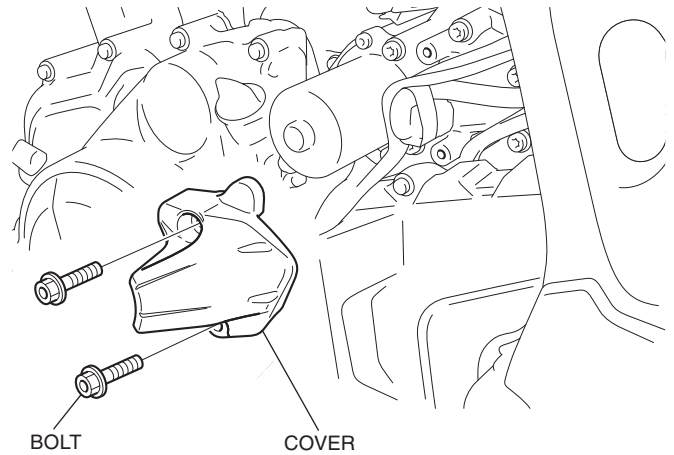
### NOTE:

- Do not disassemble the gear change switch.
  - Refer to this manual and the Engine Guard Installation Instructions when the motorcycle is equipped with the Engine Guard.
  - Disconnect the negative (-) cable from the battery before installing this accessory.
  - The memory of the clock will be erased when you disconnect the battery. Reset the clock after reconnecting the battery.
  - Trim the excess ends off the wire ties after attaching them to the wire harnesses. Do not allow the cut part of the wire tie to interfere with another harness or brake hose.
  - Reinstall the removed parts on the motorcycle and make sure that the wires and harnesses are not pinched.
  - Registration is necessary after installing this accessory.
1. Remove the tool box and disconnect the negative (-) cable of the battery.

<Left side>

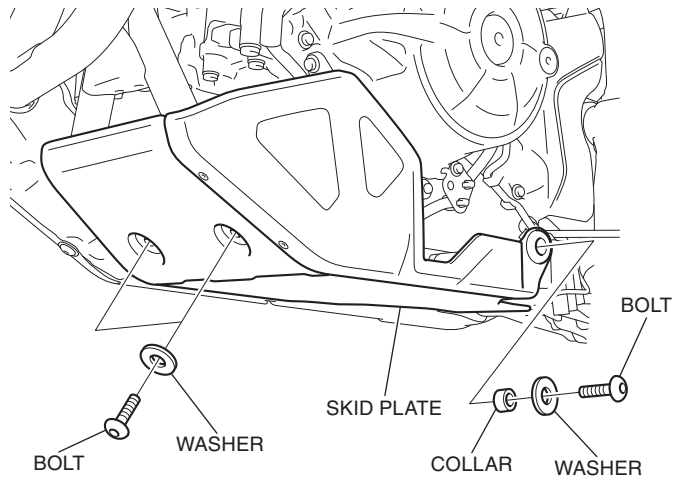


2. Remove the cover as shown.

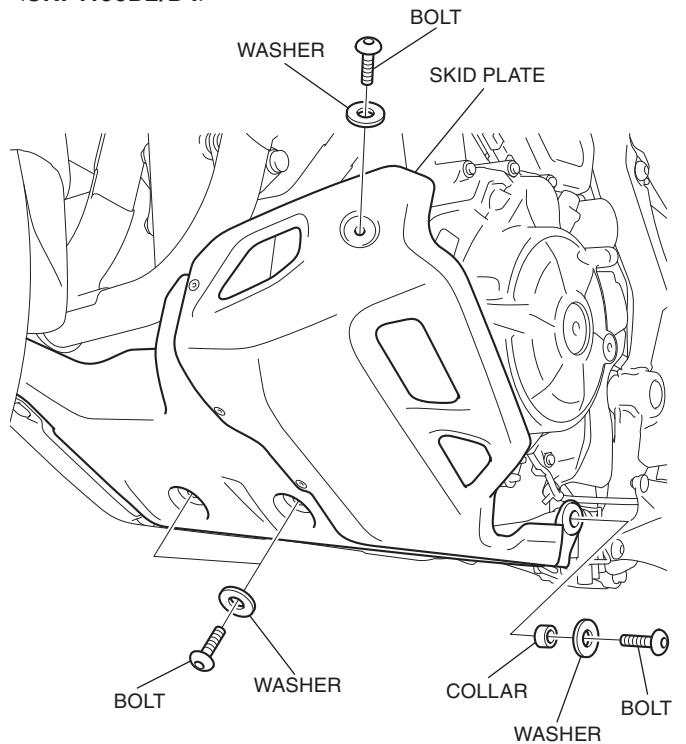


3. Remove the parts as shown.

<CRF1100D>

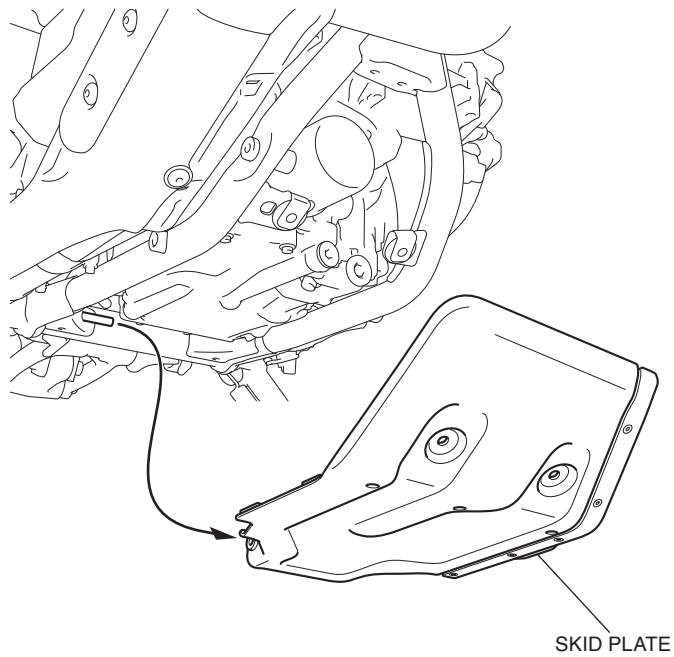


<CRF1100D2/D4>

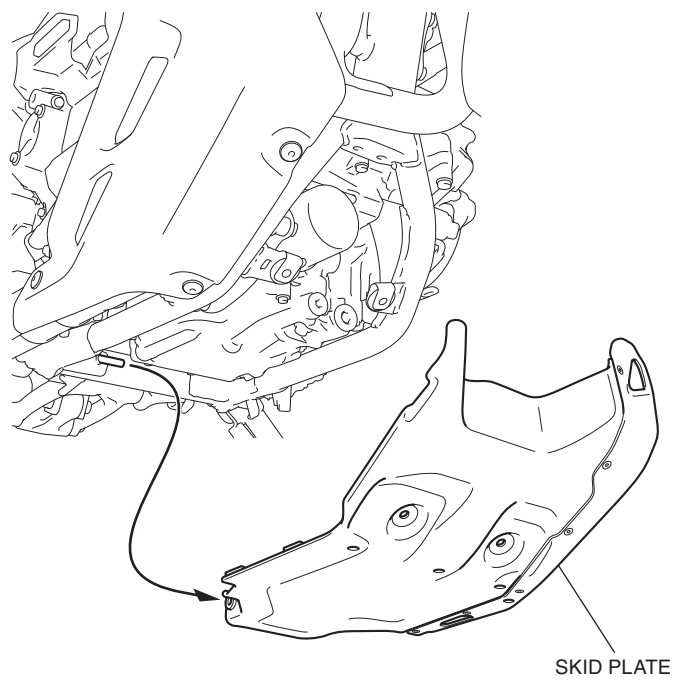


4. Remove the skid plate as shown.

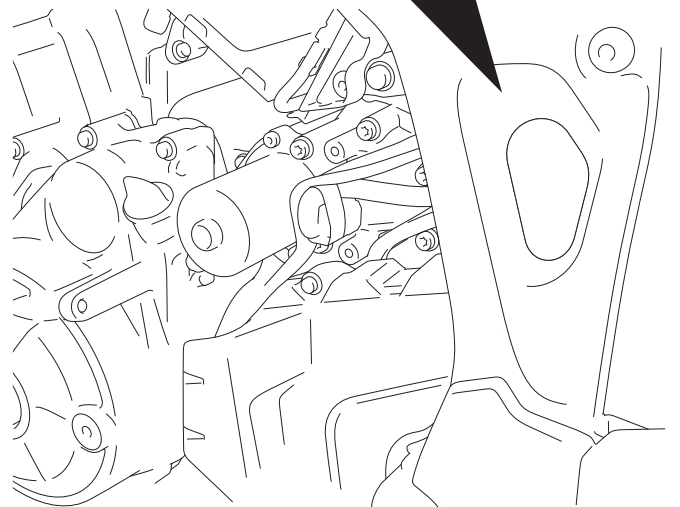
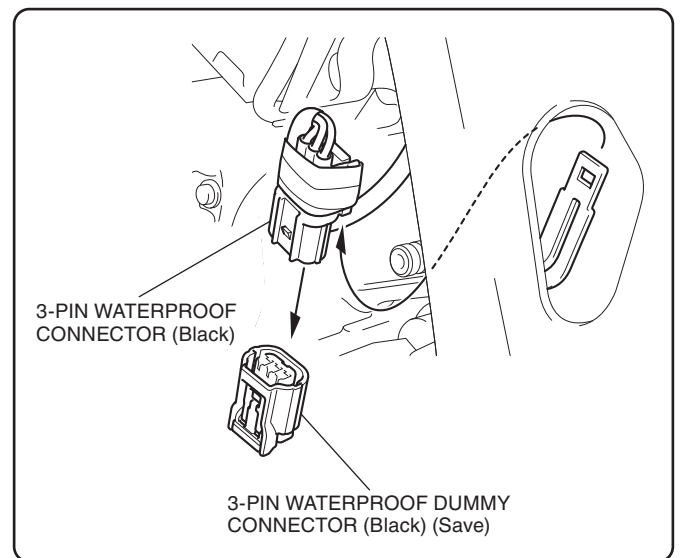
<CRF1100D>



<CRF1100D2/D4>

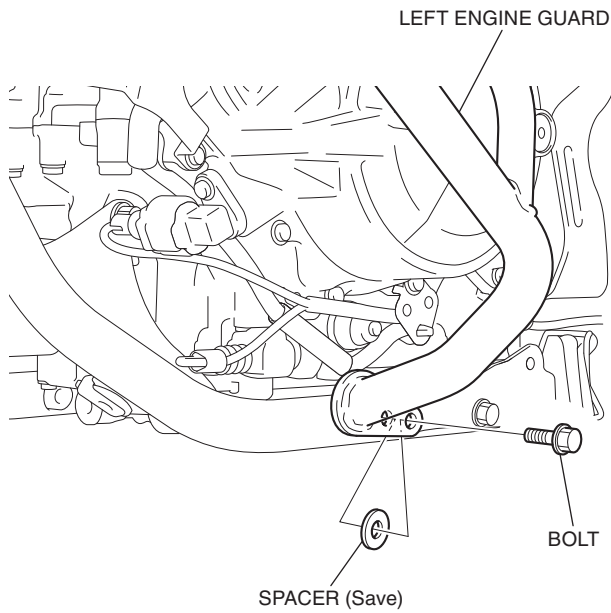


5. Remove the dummy connector as shown.



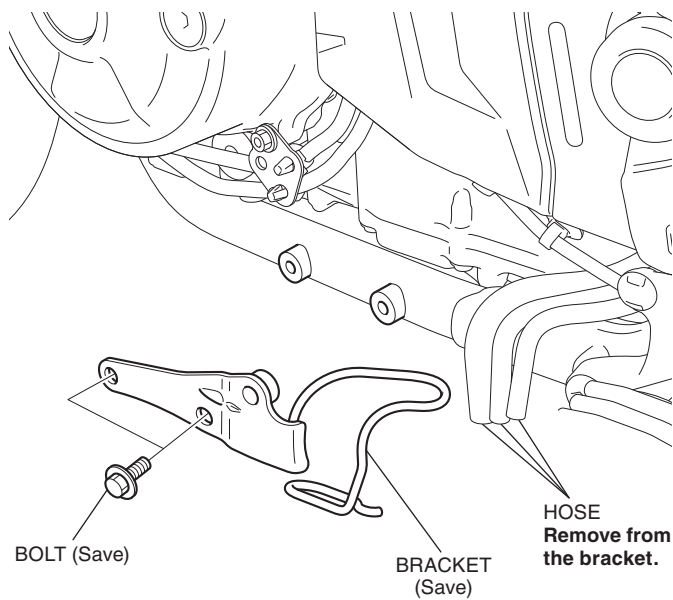
6. Remove the parts as shown.
- Perform this step for the motorcycle equipped with the engine guard.

<Left side>

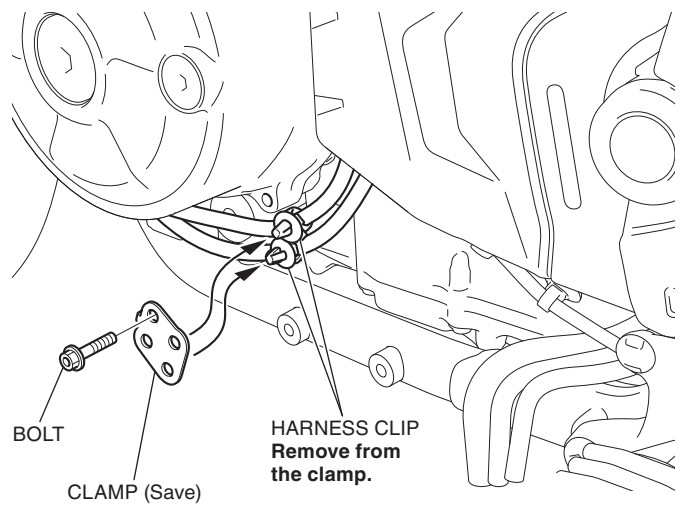


7. Remove the bracket as shown.

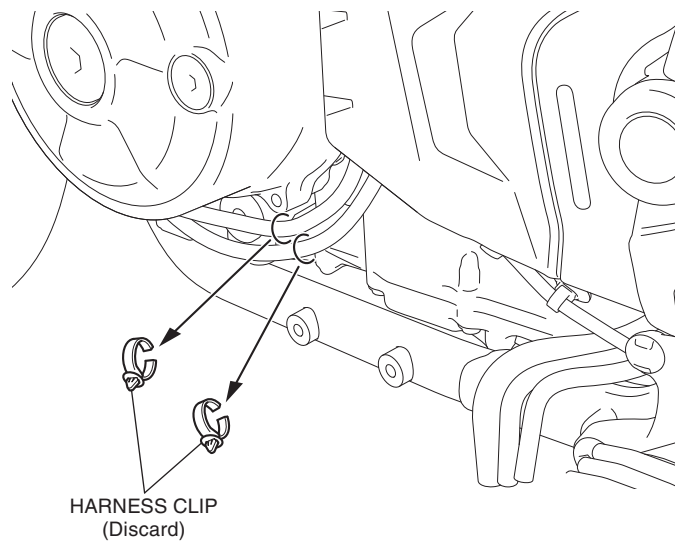
<Left side>



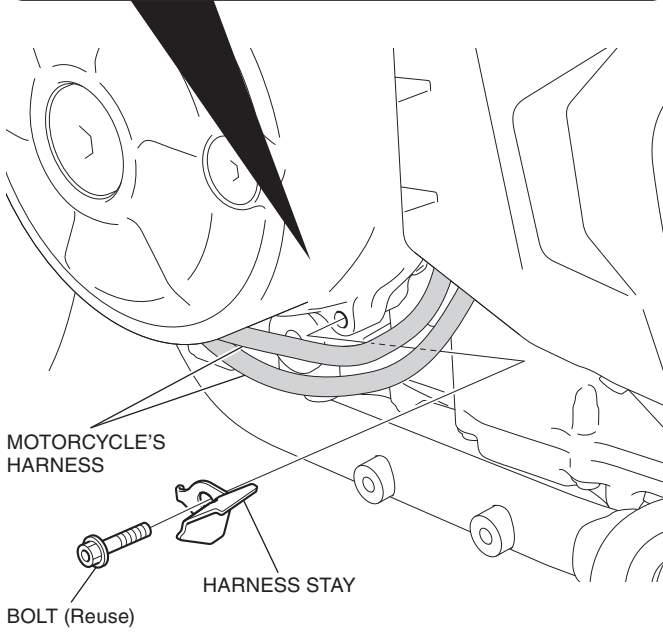
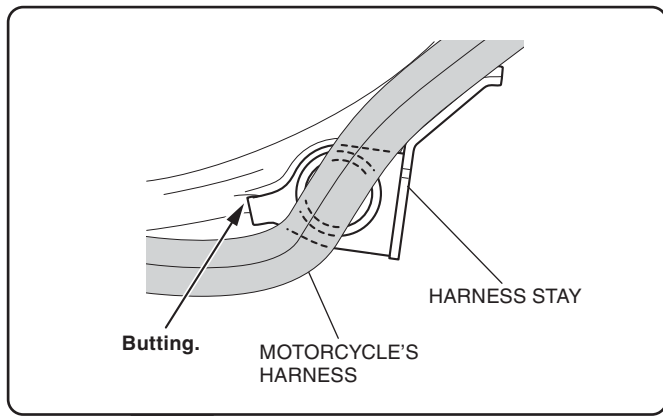
8. Remove the clamp as shown.



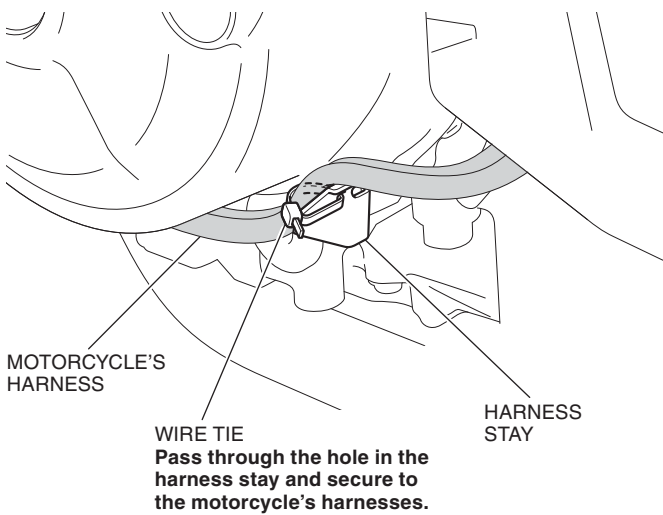
9. Remove the harness clips as shown.



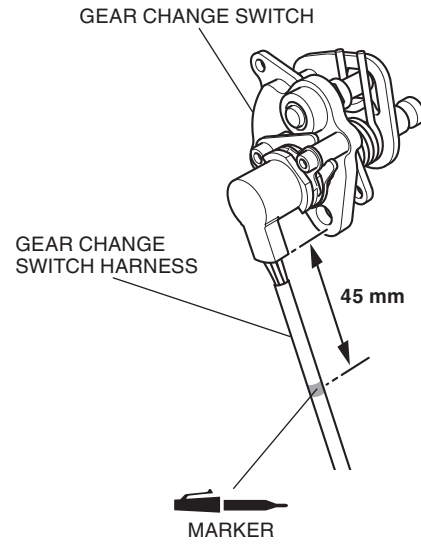
10. Install the harness stay as shown.



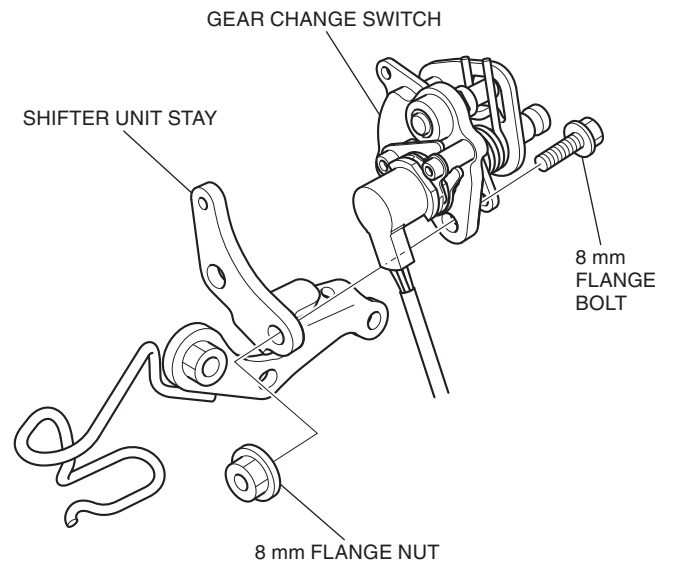
11. Secure the motorcycle's harnesses as shown.



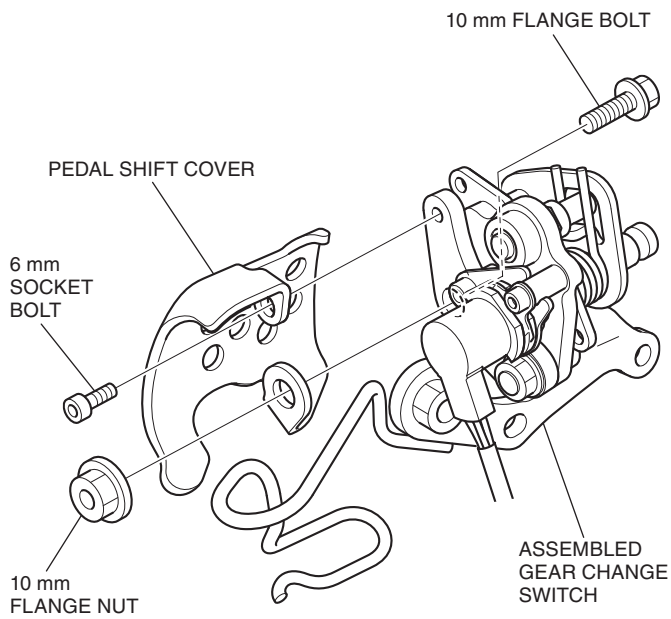
12. Mark the gear change switch harness in the position shown.



13. Loosely install the shifter unit stay to the gear change switch as shown.

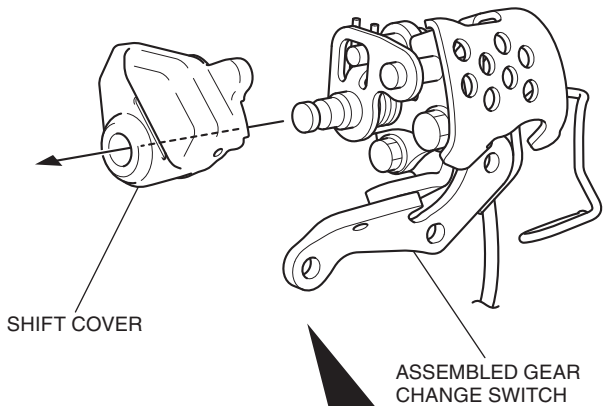



14. Loosely install the pedal shift cover to the assembled gear change switch as shown.

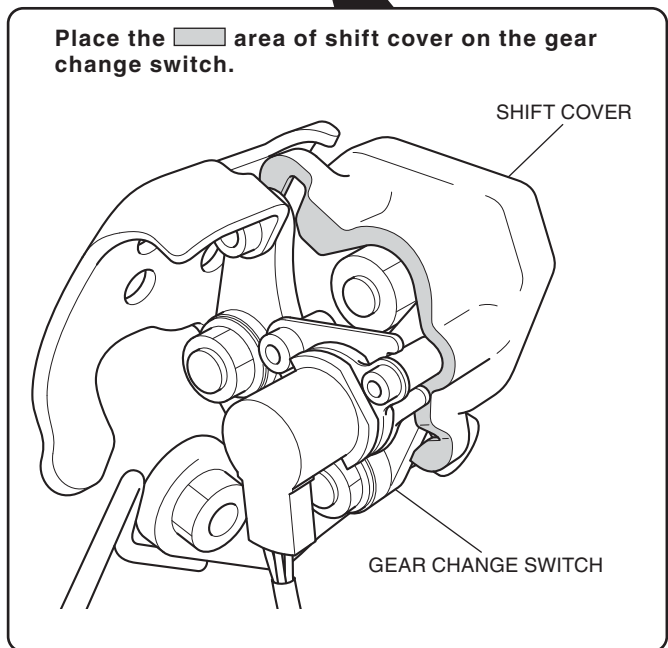


15. Tighten the loosely installed parts securely.

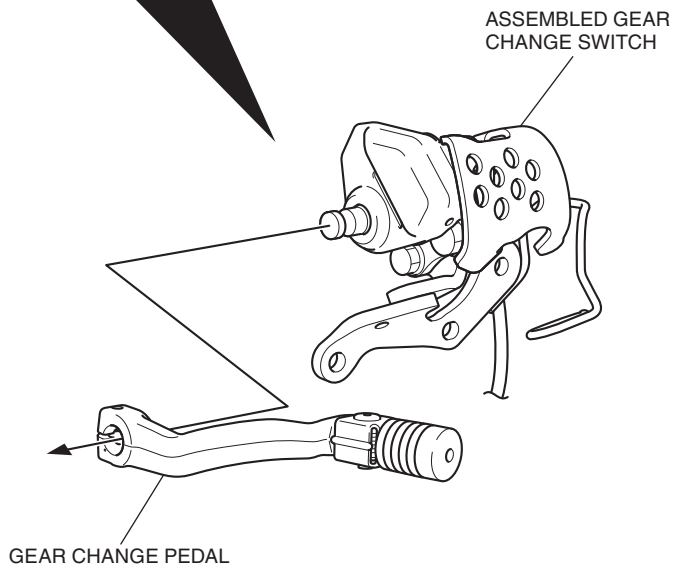
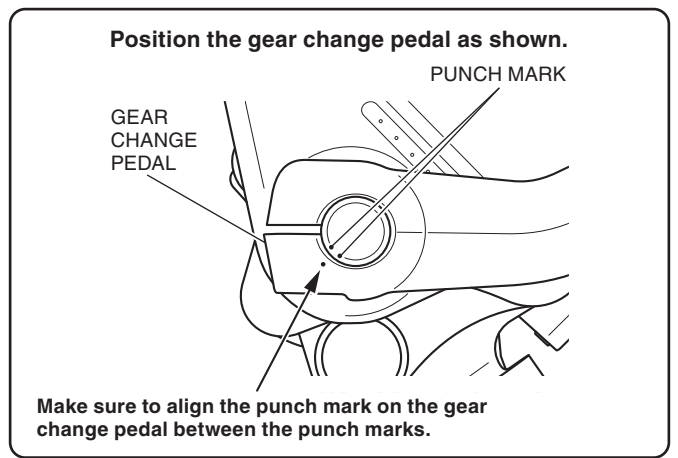
16. Install the shift cover on the assembled gear change switch as shown.



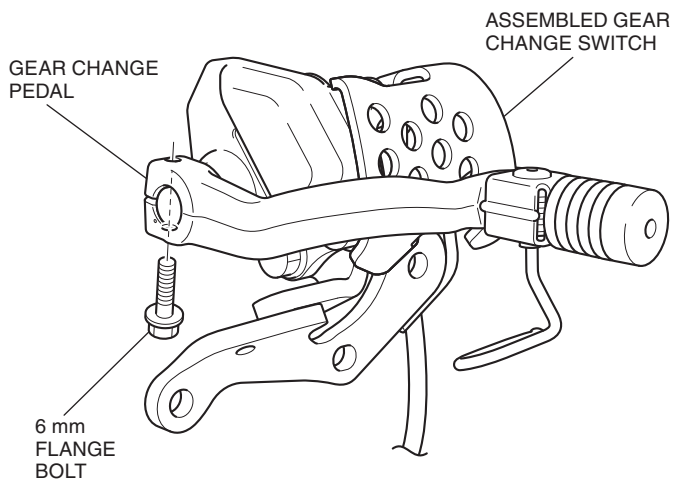
Place the  area of shift cover on the gear change switch.



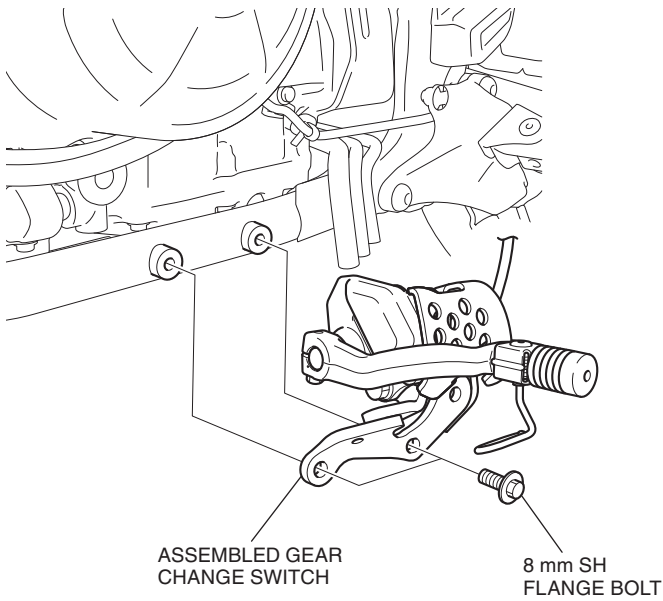
17. Install the gear change pedal as shown.



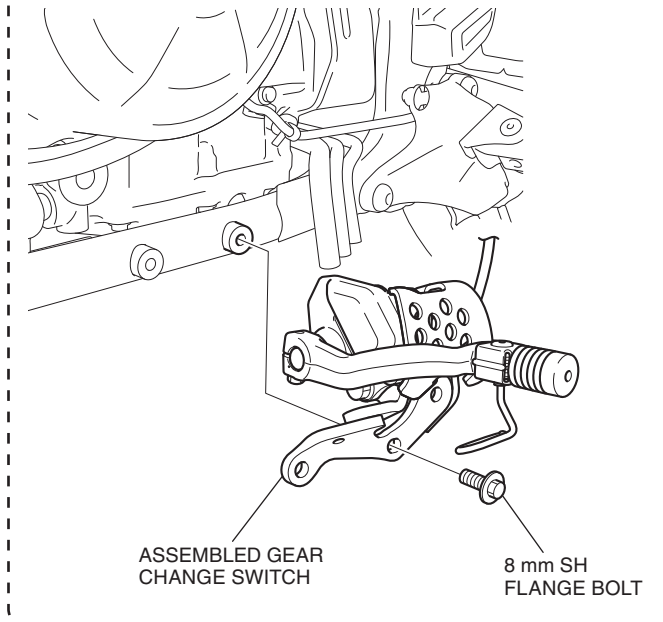
18. Install the 6 mm flange bolt as shown.



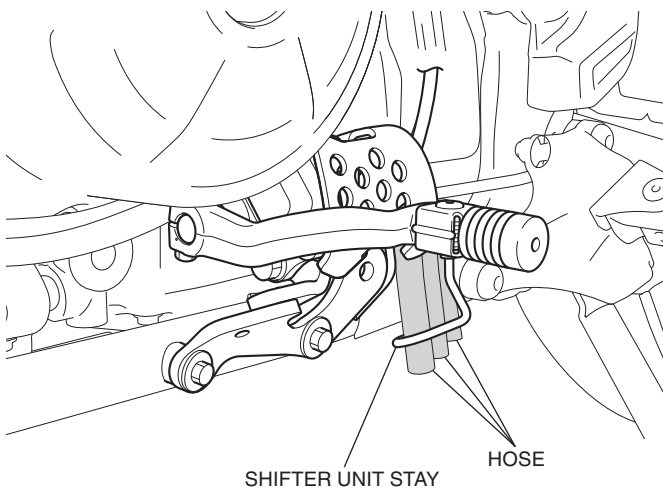
19. Install the assembled gear change switch as shown.



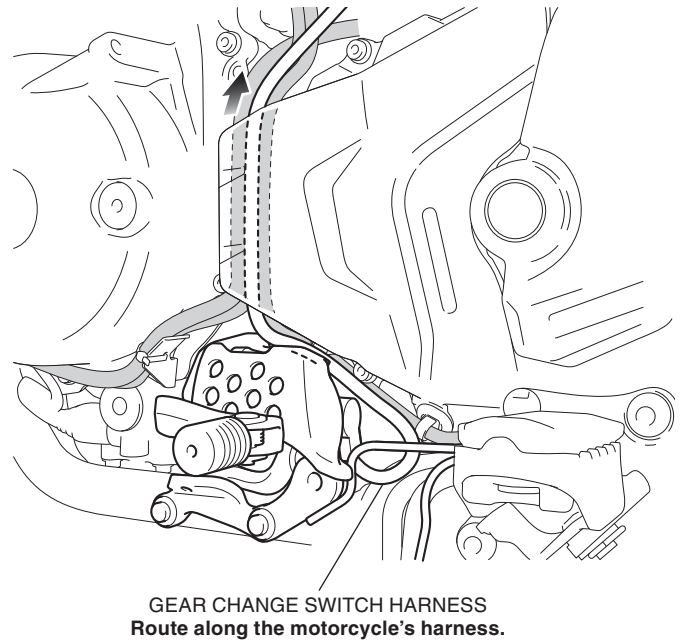
When installing the Engine guard



20. Route the hoses as shown.

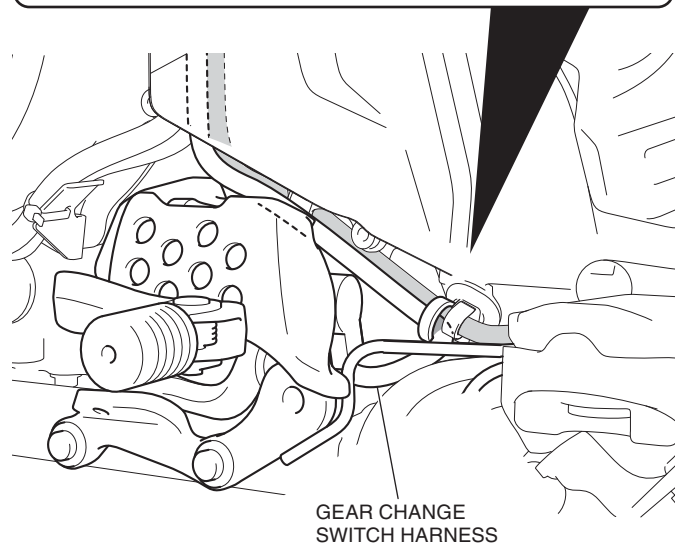
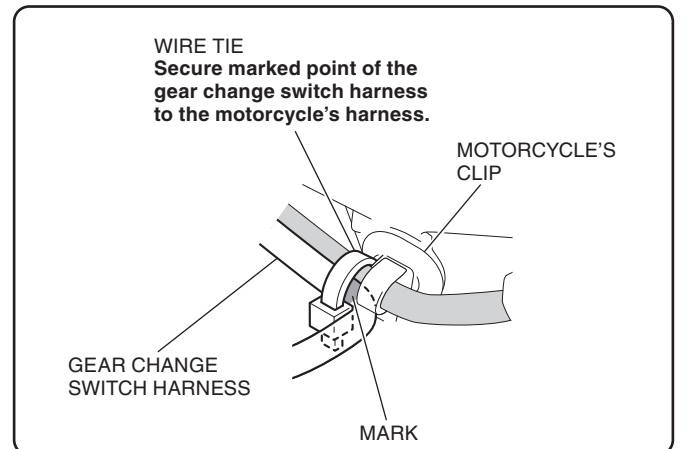


21. Route the gear change switch harness as shown.

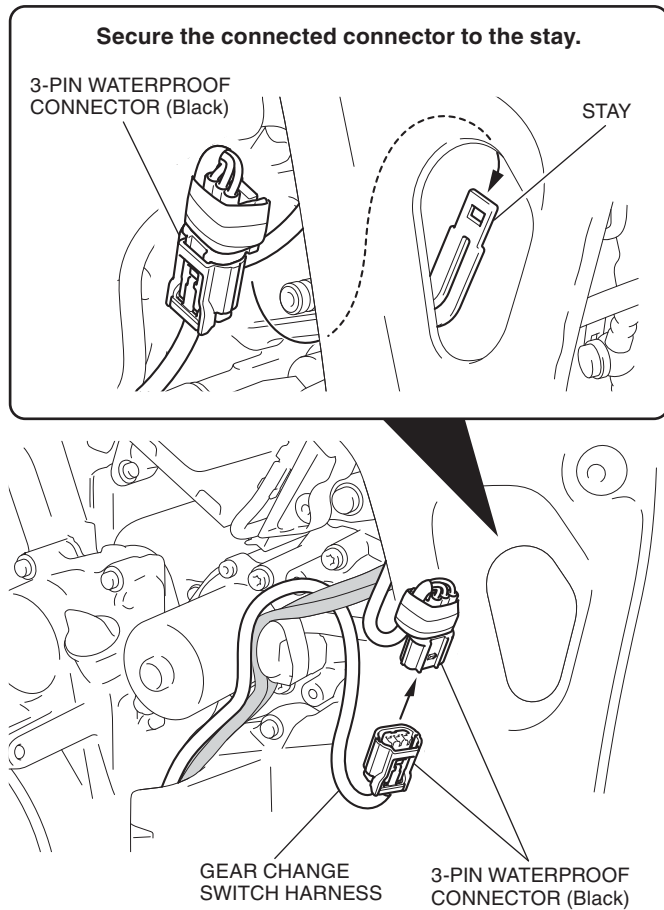


22. Secure the gear change switch harness with the wire tie as shown.

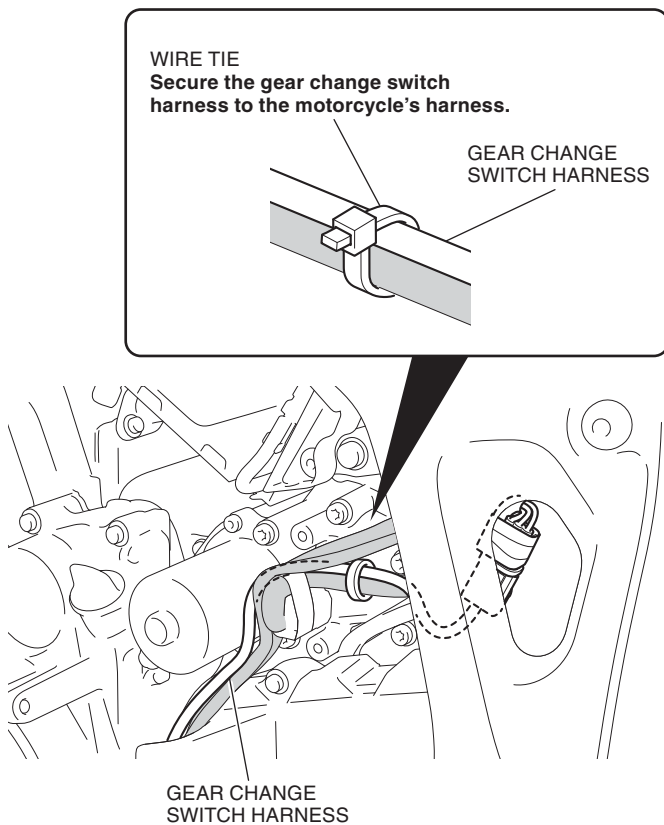
- Make sure that the wire tie is butted to the motorcycle's clip to secure it.



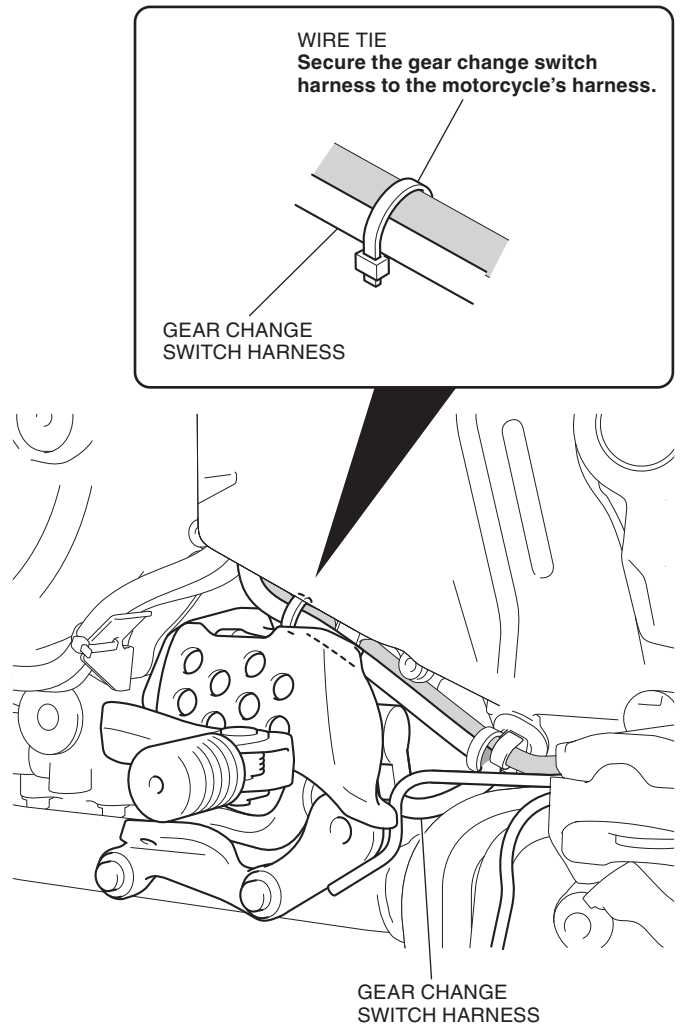
23. Route and connect the gear change switch harness as shown.



24. Secure the gear change switch harness with the wire tie as shown.



25. Secure the gear change switch harness with the wire tie as shown.



26. Install the motorcycle's parts in reverse order of the removal.

- **Confirm that any wire harness is not caught or too tight.**

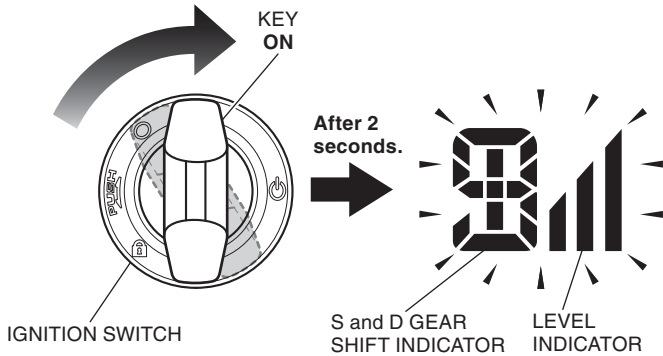
27. Register this accessory to the motorcycle with reference to the registration procedure.

28. Check the headlight and the other lights for proper operation.

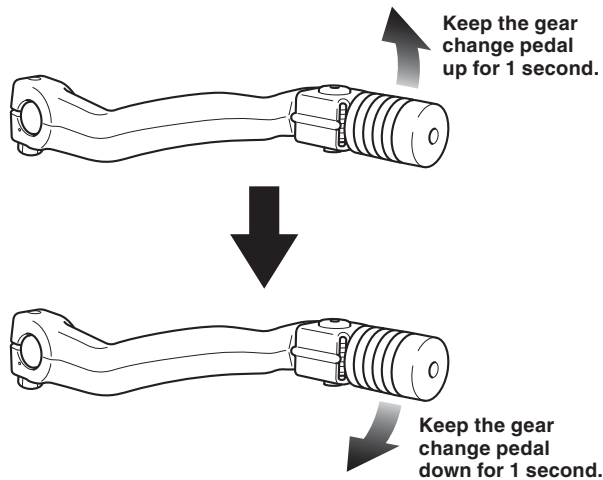


## REGISTRATION

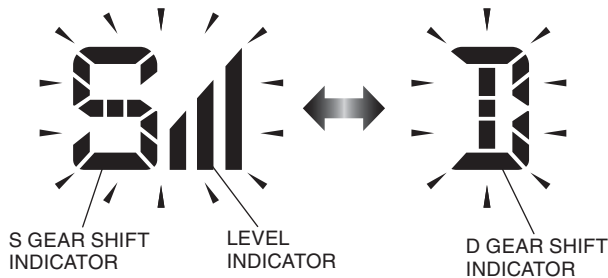
- Check that this accessory is installed securely.
1. Turn the ignition switch to ON. The S gear shift indicator, level indicator and D gear shift indicator should blink after 2 seconds.
    - **Do not start the engine at this time.**
    - **Check that the gear is in neutral.**



2. Operate the gear change pedal as shown.
  - **Start on these procedures with 5 seconds after turning the ignition switch to ON.**



3. The S gear shift indicator, level indicator and D gear shift indicator blink alternately after the registration is completed.

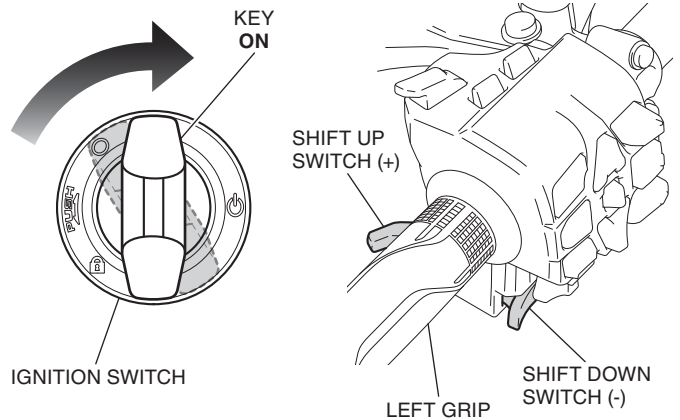


<When the gear shift indicator goes off>

- **Registration is not completed properly. Turn the ignition switch to OFF and perform the registration procedure from step 1.**
4. Turn the ignition switch to OFF.

## DEREGISTRATION

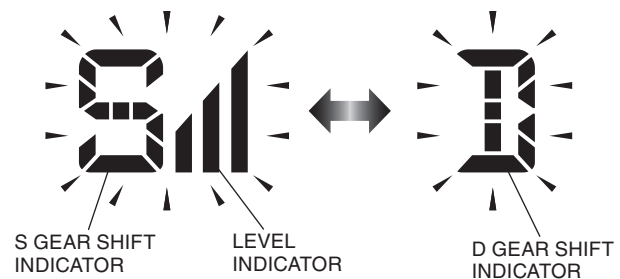
- Deregistration is necessary after removing this accessory.
1. Remove this accessory.
  2. Turn the ignition switch to ON while pressing the switch as shown.
    - **Do not start the engine at this time.**
    - **Check that the gear is in neutral.**



3. The S gear shift indicator, level indicator and D gear shift indicator blink.



4. The S gear shift indicator, level indicator and D gear shift indicator blink alternately 5 seconds after deregistration is completed.



<When the gear shift indicator go off>

- **Deregistration is not completed properly. Turn the ignition switch to OFF and perform the deregistration procedure from step 2.**

5. Turn the ignition switch to OFF.