

# HONDA

## INSTALLATION INSTRUCTIONS

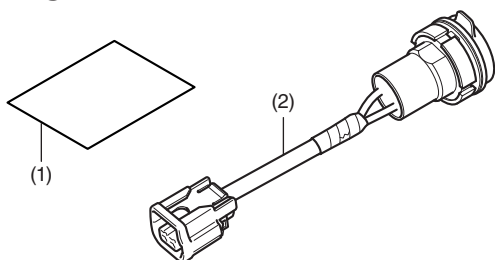
Accessory  
12V ACCESSORY SOCKET  
P/N 08U70-MKS-E00

Application  
CRF1100A/D

Publication No.  
**MII 17351**  
Issue Date  
**February 2020**

**Honda Dealer: Please give a copy of these instructions to your customer.**

### PARTS LIST



No.	Description	Qty
(1)	Installation Instruction URL	1
(2)	Accessory socket	1

### TORQUE CHART

Refer to the Service Manual for the torque values of the removed parts.

### INSTALLATION

#### ▲ CAUTION

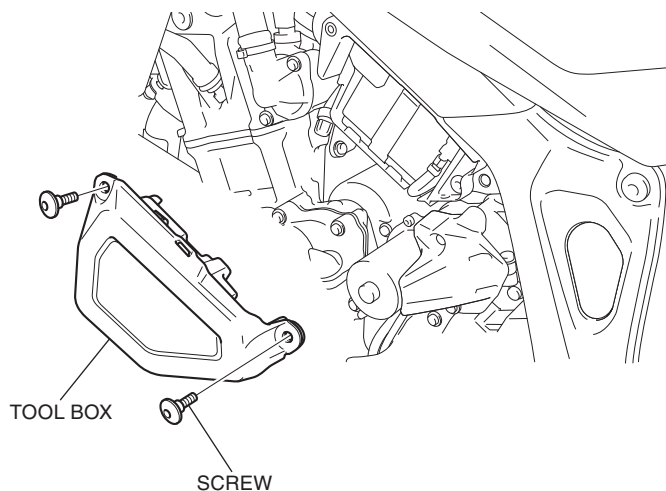
- To prevent burns, allow the engine, exhaust system, radiator, etc., to cool before installing the accessory.

#### NOTE:

- Disconnect the negative (-) cable from the battery before installing this accessory.
- The memory of the clock will be erased when you disconnect the battery. Reset the clock after reconnecting the battery.
- Reinstall the removed parts on the motorcycle and make sure that the wires and harnesses are not pinched.

- Remove the tool box and disconnect the negative (-) cable of the battery.

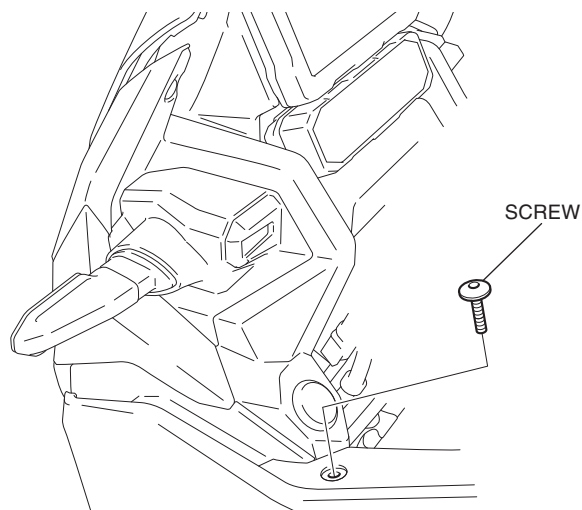
<Left side>



- Remove the screw as shown.

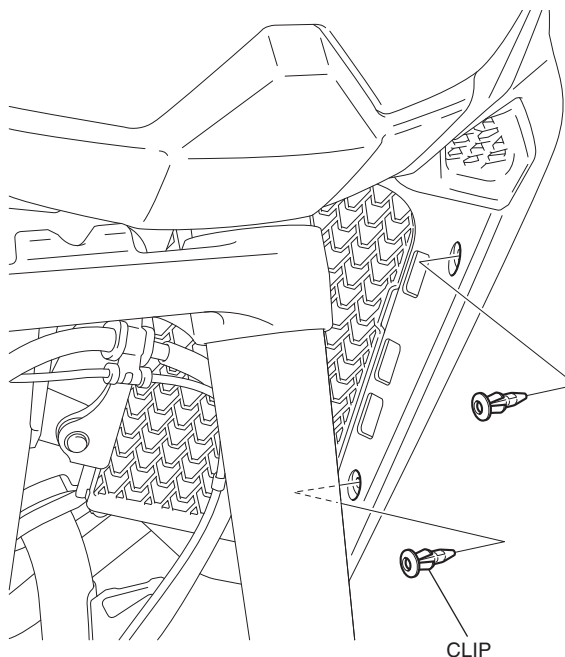
- Repeat on the right side.

<Left side>

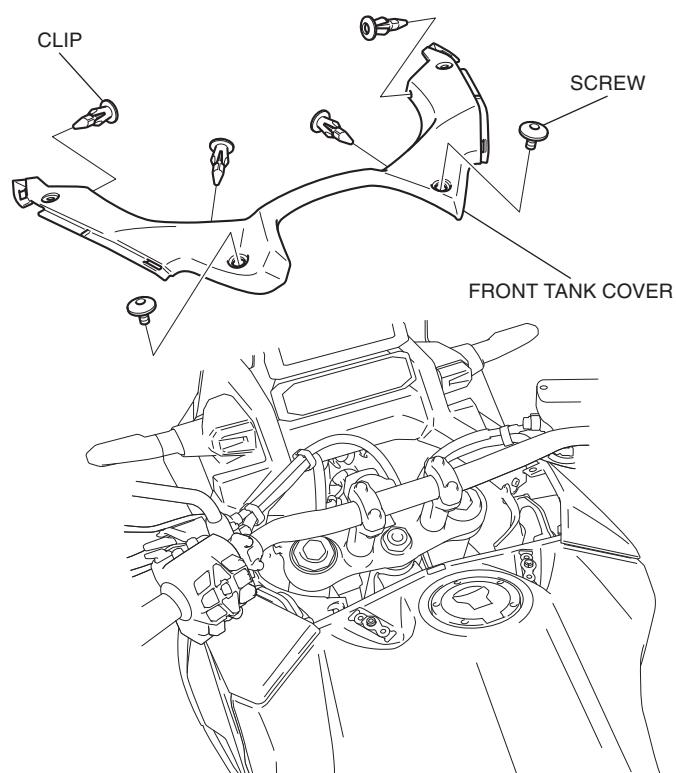


- Remove the clips as shown.

<Left side>

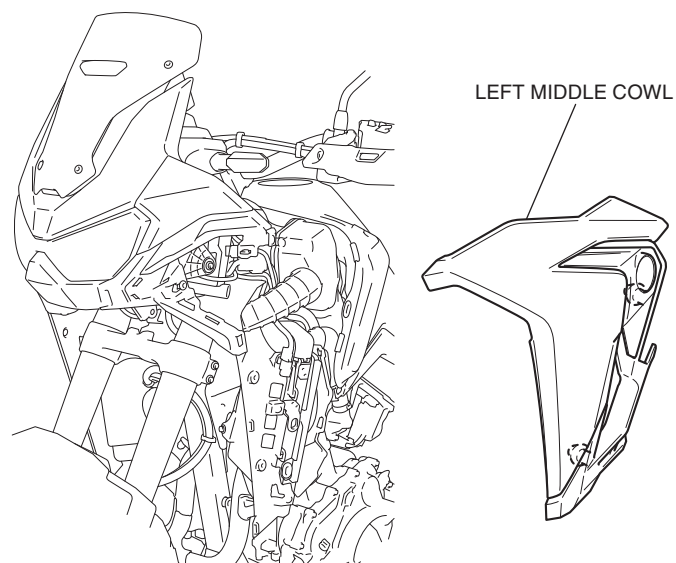


4. Remove the front tank cover as shown.



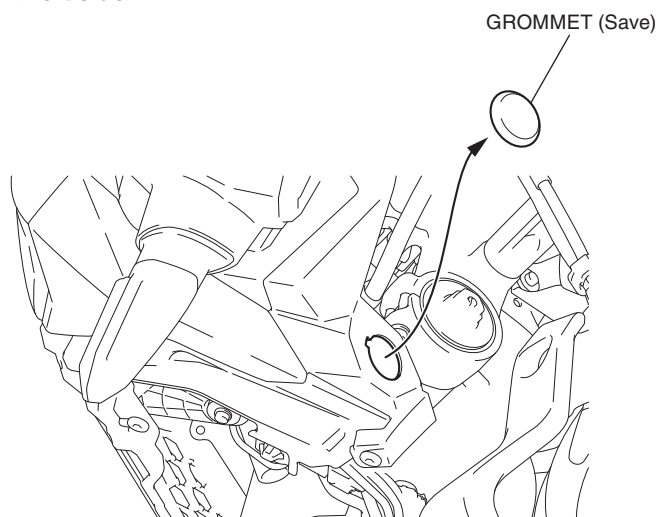
5. Remove the left middle cowl as shown.

<Left side>

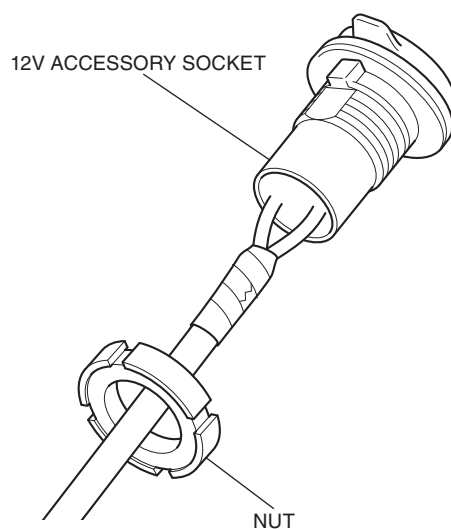


6. Remove the grommet as shown.

<Left side>

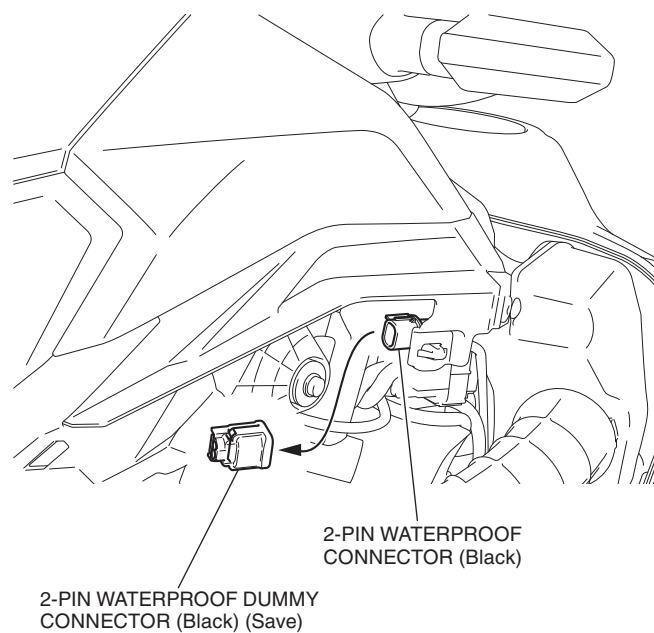


7. Remove the nut as shown.

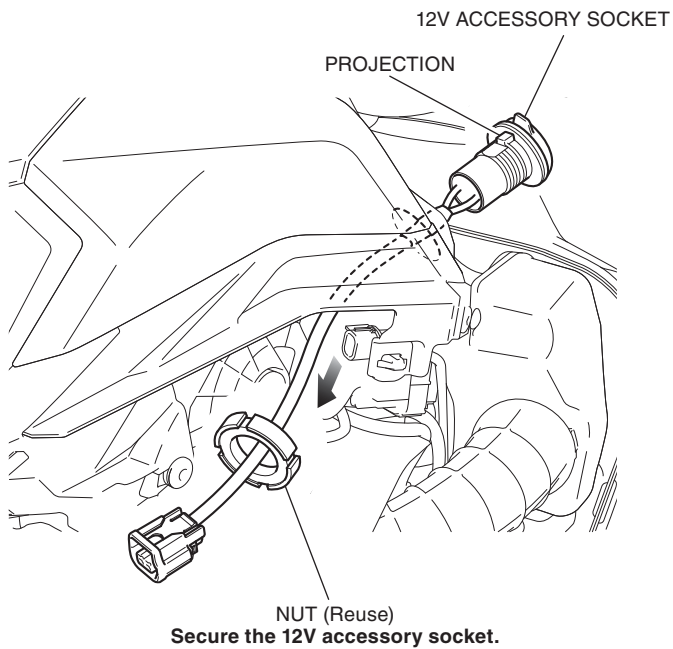


8. Remove the dummy connector as shown.

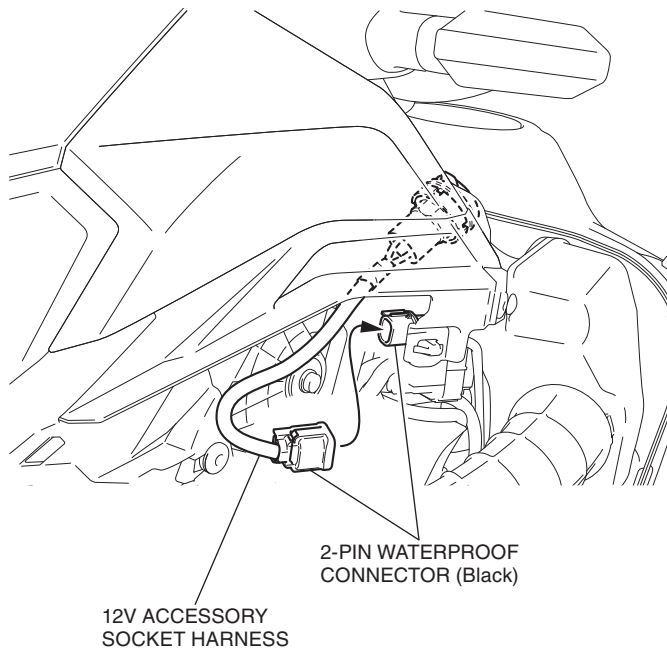
<Left side>



9. Install the 12V accessory socket as shown.



10. Connect the 12V accessory socket harness as shown.



11. Install the motorcycle's parts in the reverse order of removal.
- **Confirm that any wire harness is not caught or too tight.**
12. Check the 12V accessory socket, headlight and the other lights for proper operation.