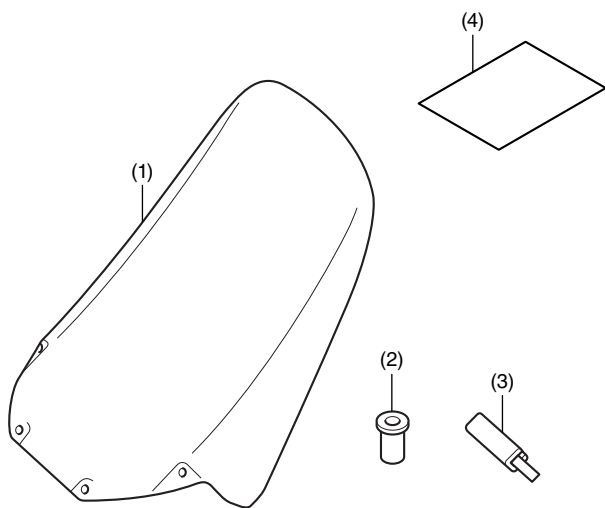


## PARTS LIST



| No. | Description                  | Qty |
|-----|------------------------------|-----|
| (1) | Tall windscreen              | 1   |
| (2) | Well nut                     | 4   |
| (3) | Rubber protector             | 1   |
| (4) | Installation Instruction URL | 1   |

## SUPPLY REQUIRED

Isopropyl alcohol

Shop towel

## TORQUE INFORMATION

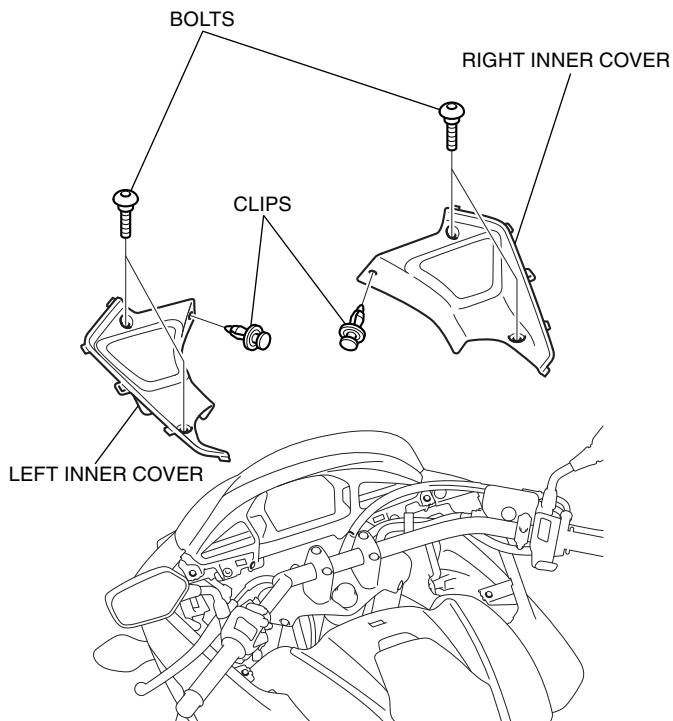
Refer to the Service Manual for the torque values of the removed parts.

## INSTALLATION

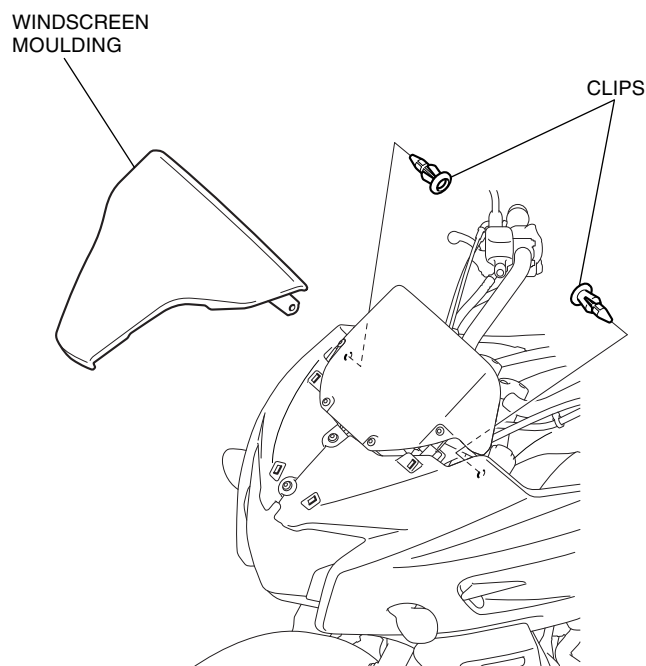
### NOTE:

- Take care not to damage the painted surfaces of the motorcycle.
- Heat the bonding surfaces with a hair dryer if the ambient air temperature is below 70°F (21°C).
- The adhesive reaches full strength in 72 hours. Wait at least 24 hours before riding your motorcycle.
- Reinstall the removed parts on the motorcycle and make sure that wires and harnesses are not pinched.
- **Illustrations show CTX700 type, other type is similar.**

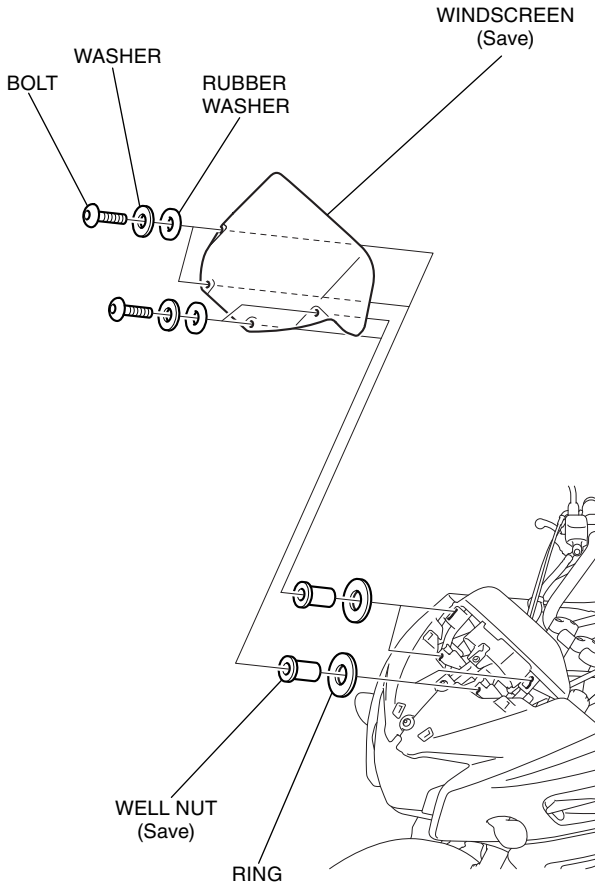
1. Refer to the Service Manual for the motorcycle, remove the inner covers.



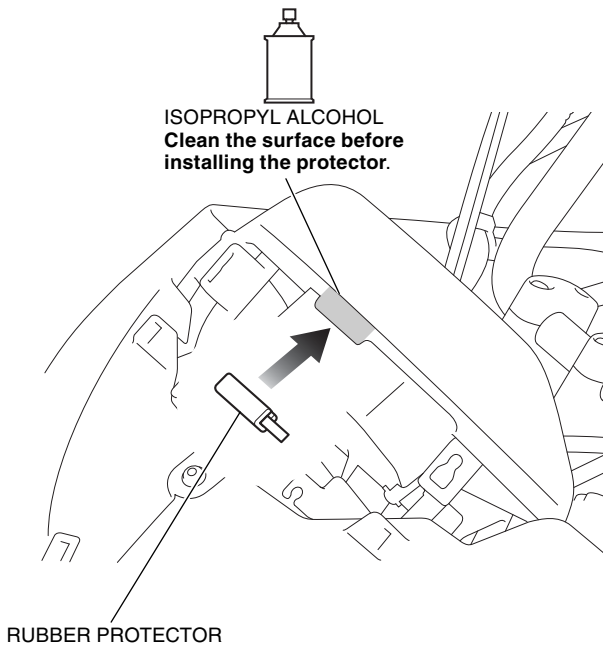
2. Refer to the Service Manual for the motorcycle, remove the windscreen moulding.



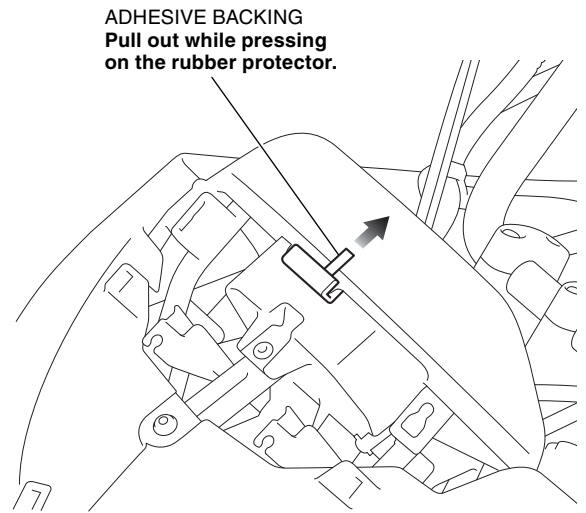
3. Refer to the Service Manual for the motorcycle, remove the windscreen.



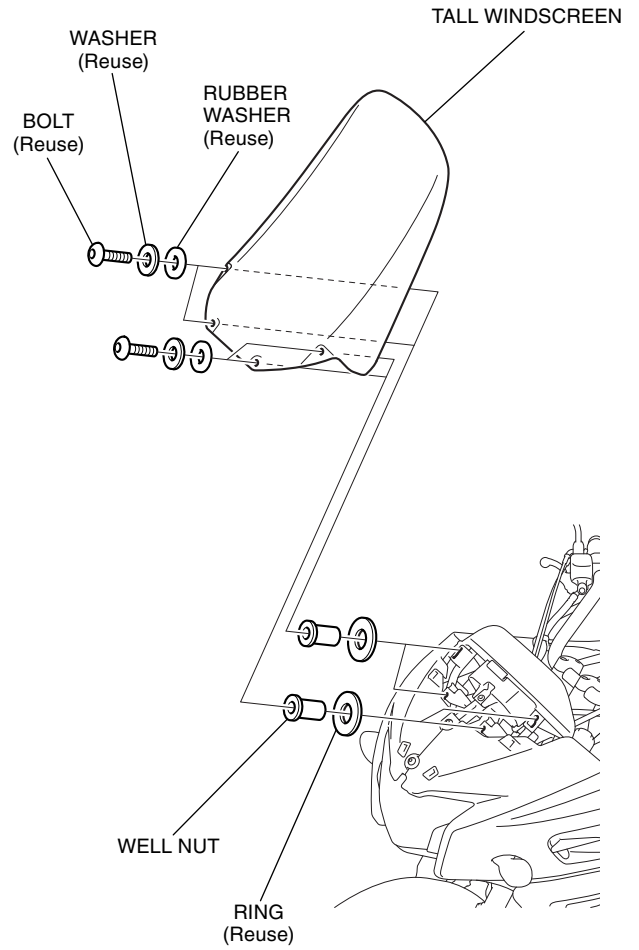
4. Temporarily install the rubber protector as shown.



5. Install the rubber protector as shown.



6. Install the tall windscreen as shown.



7. Install the motorcycle's parts in the reverse order of removal.