

INSTALLATION INSTRUCTIONS

Accessory

PLOW BRACKET
P/N 08L75-HL4-A02

Application

SXS1000M3/M3P/M5D/M5P

Publication No.

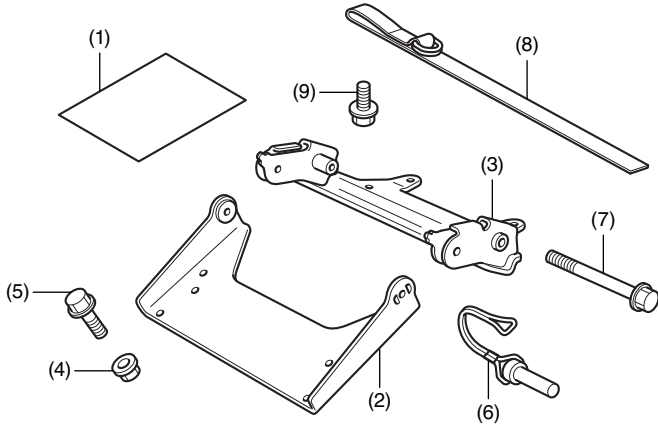
MII 15262

Issue Date

September 2015

Honda Dealer: Please give a copy of these instructions to your customer.

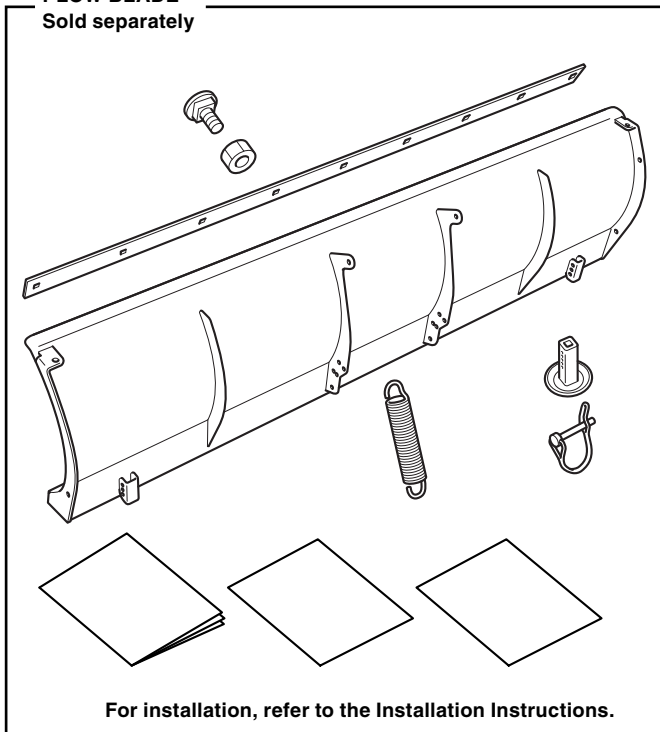
PARTS LIST



No.	Description	Qty
(1)	Installation Instructions URL	1
(2)	Flange mount	1
(3)	Bracket	1
(4)	10 mm flange nut	6
(5)	10 mm flange bolt (middle)	6
(6)	Retaining pin	2
(7)	10 mm flange bolt (long)	2
(8)	Strap	1
(9)	10 mm flange bolt (short)	4

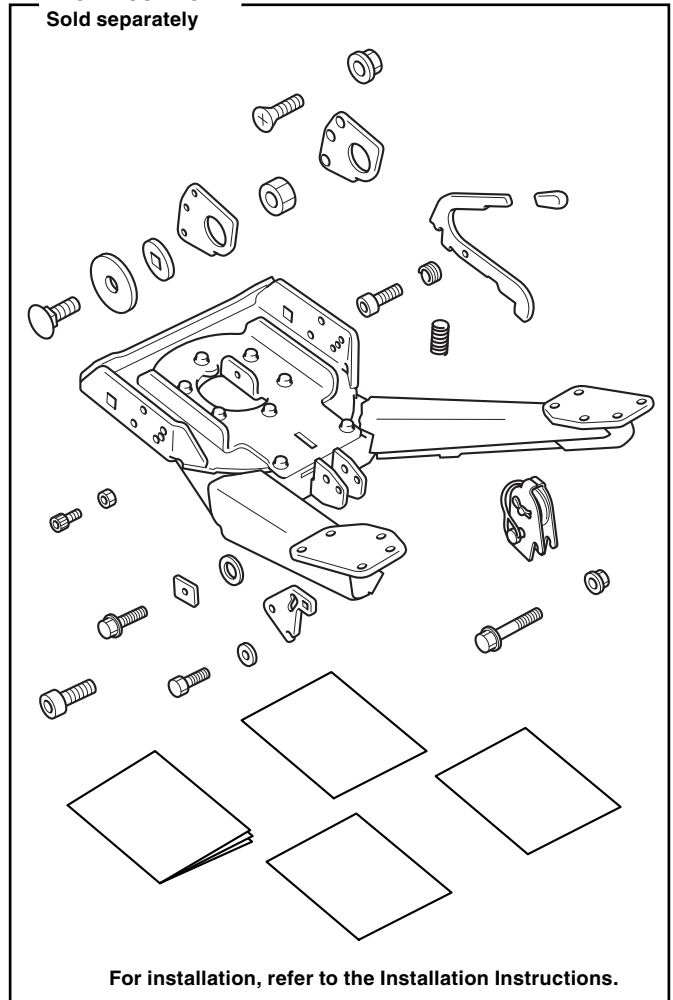
PLOW BLADE

Sold separately



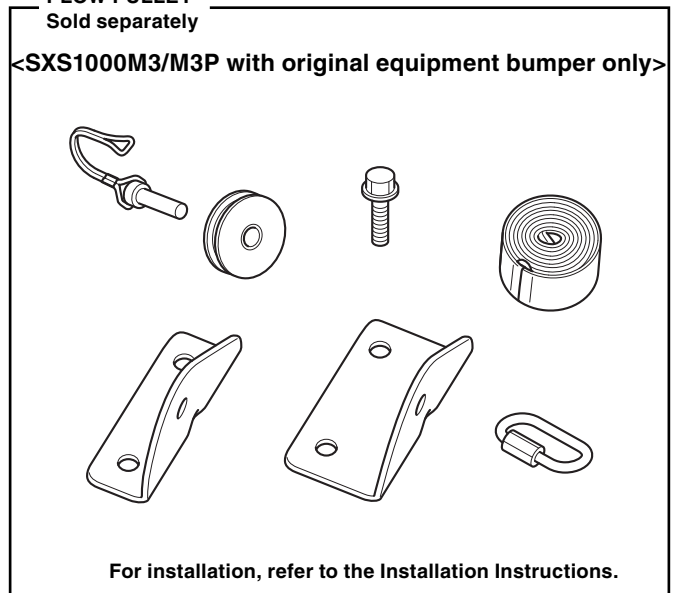
PLOW PUSH TUBE

Sold separately

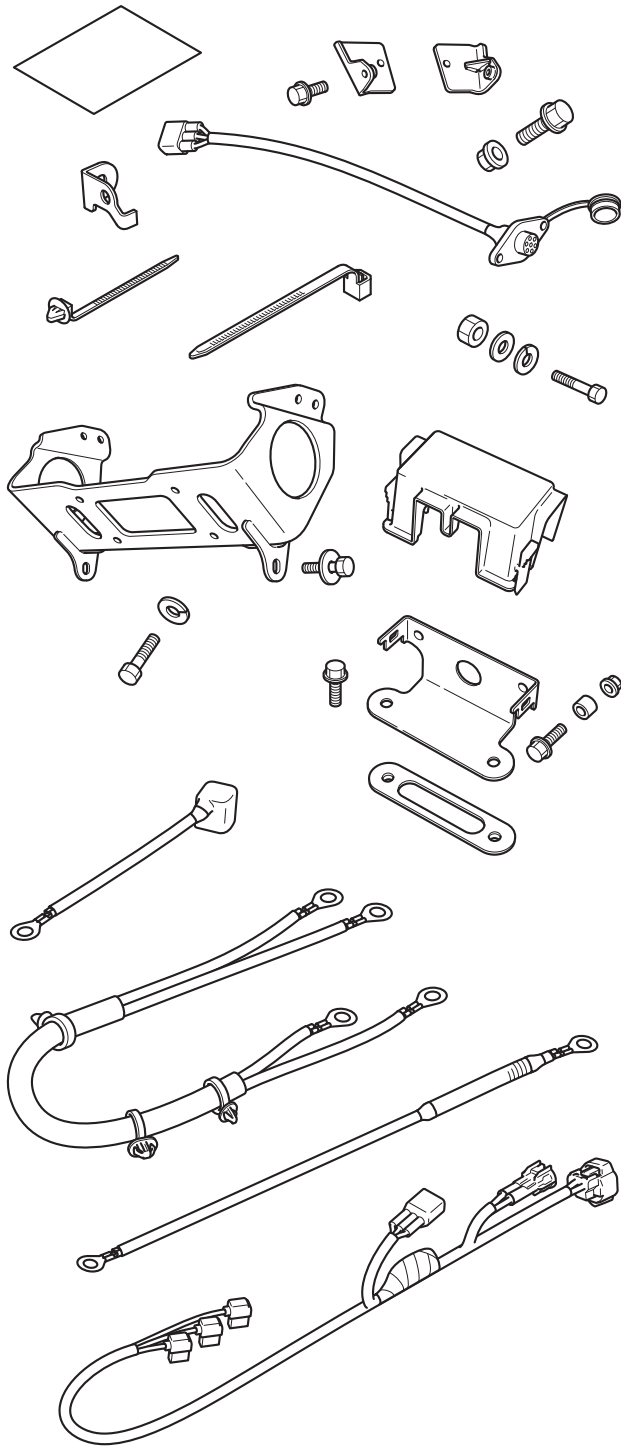


PLOW PULLEY

Sold separately

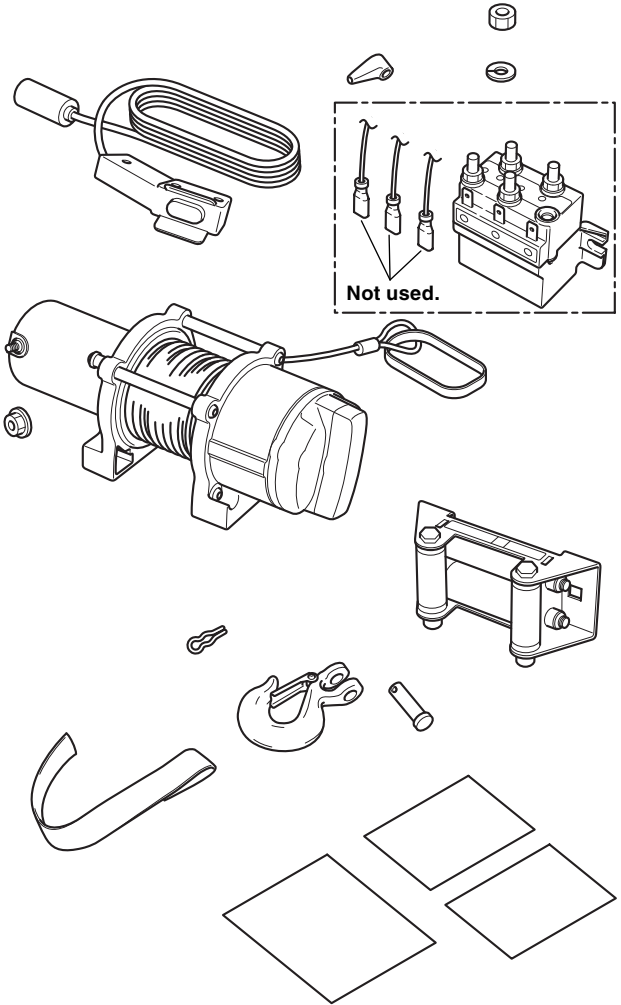


WINCH MOUNT
Sold separately



For installation, refer to the Installation Instructions.

WINCH KIT
Sold separately



For installation, refer to the Installation Instructions.

TOOLS REQUIRED

- Socket (14 mm)
- Ratchet
- Box-end wrench (14 mm)
- Torque wrench

TORQUE CHART

Tighten all screws, bolts, and nuts to their specified torque values. Refer to the Service Manual for the torque values of the removed parts.

Item	N·m	kgf·m	lbf·ft
10 mm flange bolt (short)	39	4.0	29
10 mm flange nut	39	4.0	29
10 mm flange bolt (long)	50	5.1	37

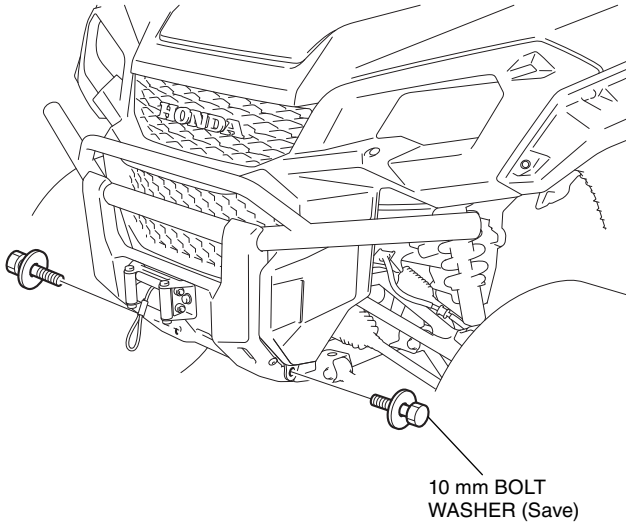
INSTALLATION

▲ CAUTION

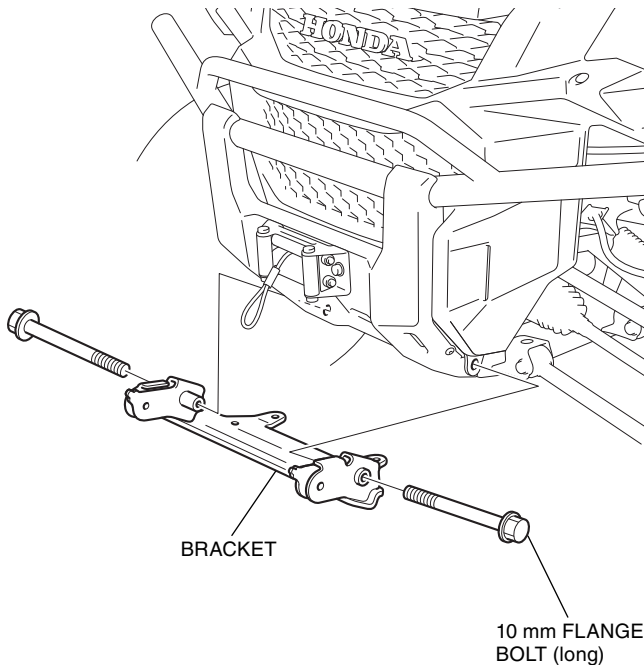
- To prevent burns, allow the engine, exhaust system, radiator, etc., to cool before installing the accessory.

NOTE:

- Always perform the heavy installation work with two people.
1. Install the separately sold Winch mount and Winch kit.
 2. Remove the bolts as shown.

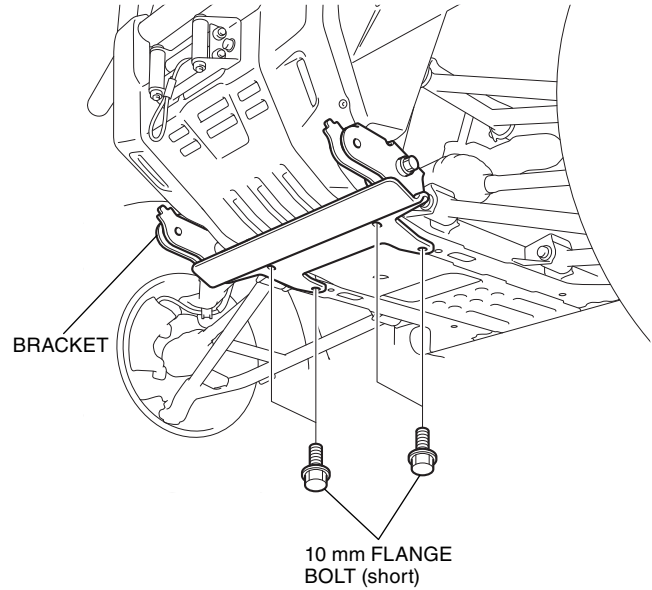


3. Loosely install the bracket as shown.
 - Loosely install the bolts from the left side of the vehicle.



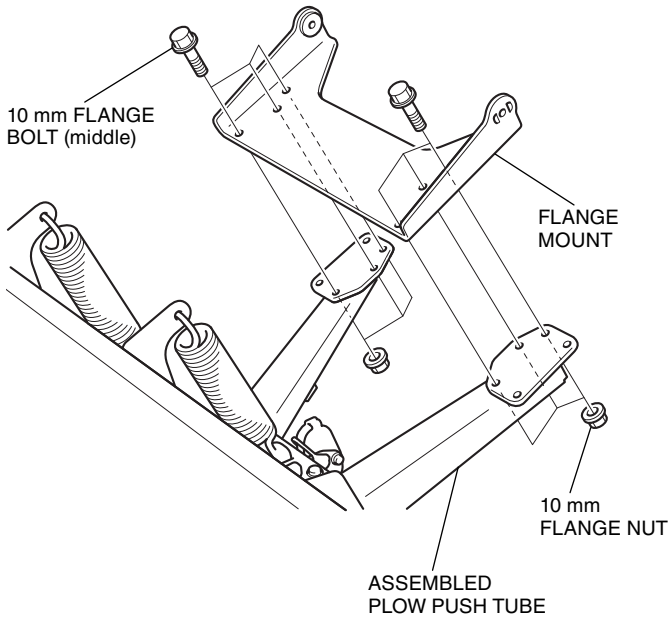
4. Loosely install the bolts as shown.

<Under side>

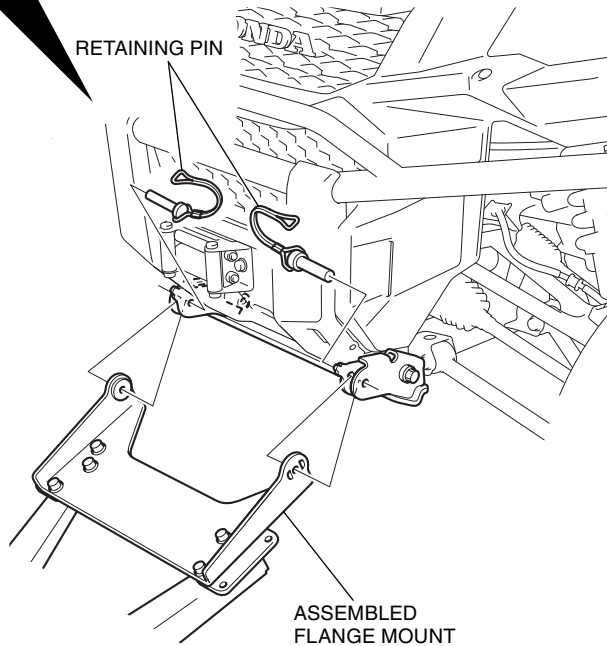
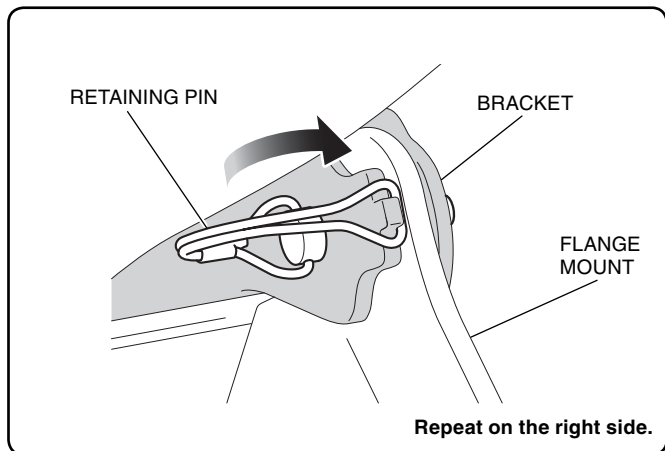


5. Tighten the bolts securely while keeping the bracket aligned evenly all around.
 - Tighten the 10 mm flange bolts (long) to the specifications in the torque chart from the left side of the vehicle.
6. Assemble the plow push tube and the plow blade while referring to the Installation Instructions included with each kit.
 - The pulley that comes with the plow push tube is not used for SXS1000M3/M3P with original equipment bumper.
7. Install the separately sold plow pulley.
 - Perform this step is for SXS1000M3/M3P with original equipment bumper only.

8. Install the flange mount as shown.

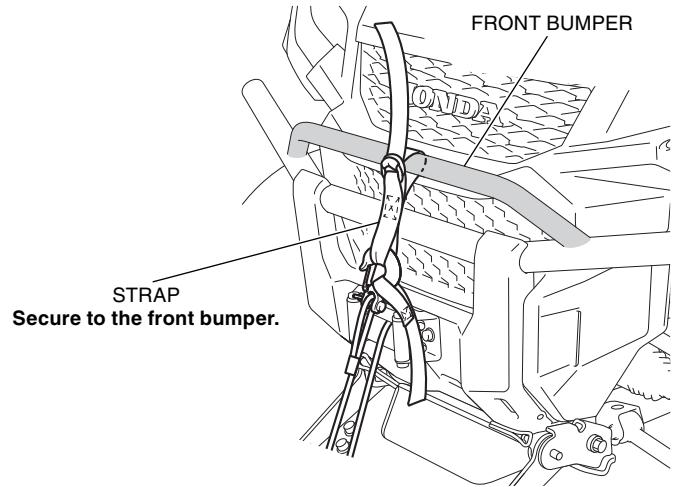


9. Install the assembled flange mount as shown.

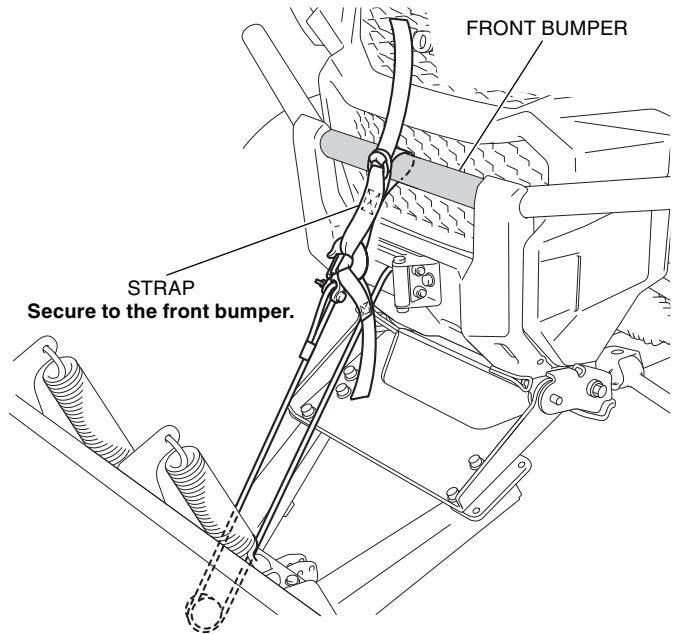


10. Secure the plow with the winch as shown.

<SXS1000M5D/M5P>



<SXS1000M3/M3P>



<Vehicle with accessory front bumper.>

