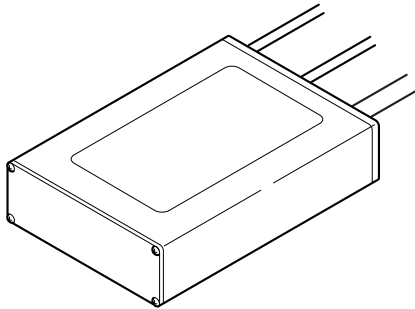


# USER'S GUIDE

## Motorcycle CB Radio System



**P/N: 08E83-MKC-A00**

\* This CB radio complies with applicable FCC Rules and Regulations.

### **⚠ WARNING**

- Never use the CB radio in such a way that could be dangerous while riding, such as taking your hands off the handlebars to operate the controls.

- Never replace parts or disassemble/modify the CB radio in a way that could impair its original features and/or violate Federal Communications Commission (FCC) rules and regulations.
- The Citizens Band (CB) Radio Service is under the jurisdiction of the FCC. Any alterations such as replacing any parts in the CB radio that alter the performance of the unit's original FCC equipment authorization are strictly prohibited.
- Any changes or modifications not expressly approved by the party responsible for compliance could void the user's authority to operate the equipment.
- Carefully read Part 95 of the FCC Rules and Regulations before using the device.

This device complies with part 15 of the FCC rules.

Operation is subject to the condition that this device does not cause harmful interference.

- This CB radio has been approved by the Federal Communications Commission (FCC) in the U.S.A. and Industry Canada (IC) in Canada, and the FCC ID and IC numbers are shown on the label. An individual license is not required in either the U.S.A. or Canada. Please read the rules for operating a CB transmitter carefully.
- Carefully read the User's Guide and Citizens Band Radio service rules before operating the CB radio. Learn and observe all the rules.

## Introduction

Congratulations on your purchase of this Honda Genuine Accessory. This CB radio will enhance the enjoyment of riding your motorcycle.

- Before using this CB radio, read this User's Guide carefully. Following the instructions in the guide will allow you to experience the full functionality of the radio.
- Store this guide on your motorcycle so that you can refer to it wherever required. Make sure you read and understand the guide before you start using the transceiver as incorrect operation could be dangerous.
- You will be given a completed Warranty Card by the dealer who sold you your CB radio. Check the details of the Warranty Card and keep it with the User's Guide.

## Notes on Safety

### Explanation of safety labels, symbols, and instructions

The User's Guide should be kept with the motorcycle at all times.

Listed below are examples of important safety labels, symbols, and instructions used in the User's Guide indicating various levels of risk if the instructions are not properly followed.

### **⚠ WARNING**

You CAN be KILLED or SERIOUSLY HURT if you don't follow these instructions.

### **⚠ CAUTION**

You CAN be HURT if you don't follow these instructions.

### Classification of Other Symbols



⊘ This symbol indicates "Do not" with the detail depicted in the symbol (in this example, it means do not disassemble).



ⓘ This symbol indicates to pay close attention to the procedure.

### Guide for Notes and Tips

**NOTE :** This sign gives notes and helpful information on the use of the CB radio.

**TIP(\*):** This sign gives additional information to the content.

# Notes to Users

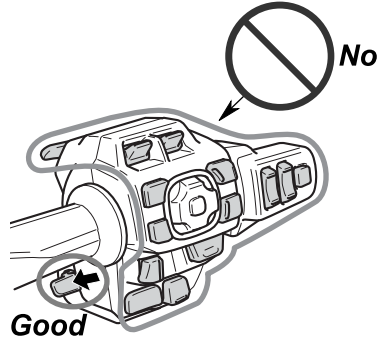
## ⚠ WARNING

**While riding, do not operate any switches other than the TALK switch.**

Operating any switch, other than the TALK switch, can interfere with the rider's ability to control the handlebars, which can cause instability that could lead to a crash.

Always adjust the settings of the CB radio before riding.

Do not operate the CB radio with your hand away from the handlebar.



**Do not use the CB radio under dangerous traffic conditions.**

Only use the CB radio when traffic and road conditions are such that it is safe to do so.



## NOTICE

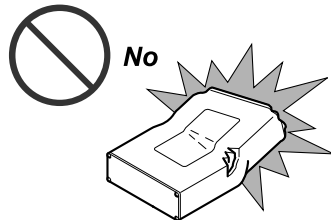
**Do not expose the CB radio to excessive amounts or a forceful flow of water. When washing the motorcycle, do not spray water on the CB radio with a hose.**

The CB radio is designed to be water resistant and moisture proof, and should withstand riding in normal rainy conditions. If exposed to more severe conditions, water or moisture might enter the device and it could be damaged.



**Do not use in a damaged condition.**

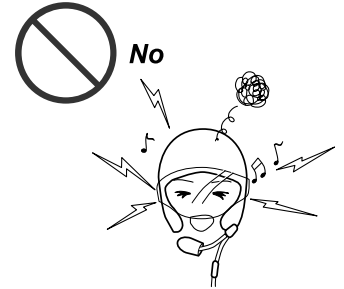
Do not use the CB radio if the casing is physically damaged. The CB radio's water resistant and moisture proof capabilities will be impaired and which could lead to a failure.



## ⚠ CAUTION

**Do not raise the volume to an excessive level.**

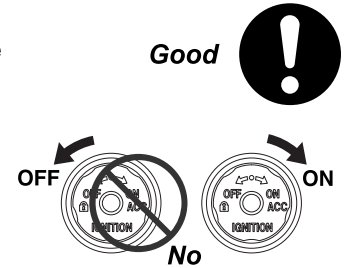
To help prevent potentially dangerous situations while riding, keep the volume to a level where you can still hear surrounding noises. Listening at an excessive volume can damage your hearing.



## NOTE

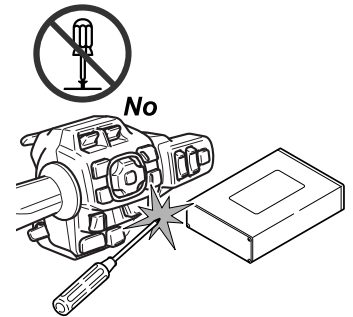
**Use with the engine running.**

If the CB radio is used with the engine stopped, the battery voltage may drop and the engine may not start.



**Do not disassemble/modify the CB radio.**

The CB radio is built with precision electronic parts. Do NOT disassemble at any time. Doing so will void the Warranty and violates the mandated usage rules.



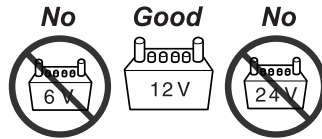
## Notes for Installation

### NOTICE

Refer to the Installation Instructions for proper installation.

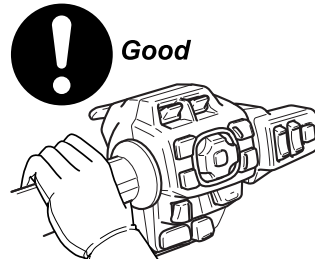
**Do not use a power source other than 12 volts (12 V).**

The CB radio is designed only for a 12V DC negative ground motorcycle. Do not connect to another voltage power source.



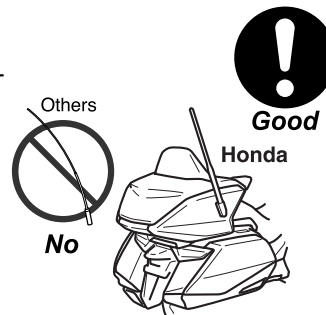
**Mount the controls in a location where you can reach them with your hands on the handlebar.**

To prevent a dangerous riding situation, mount the controls in a location where they do not inhibit your ability to control the motorcycle, and where you can operate the TALK switch with your hands on the handlebar.



**Use the Honda genuine CB antenna.**

There may be some CB radio interference if a non-genuine Honda antenna is used.



**Always use the specified fuse rating.**

Not doing so may cause damage to the CB radio unit.

## Contents

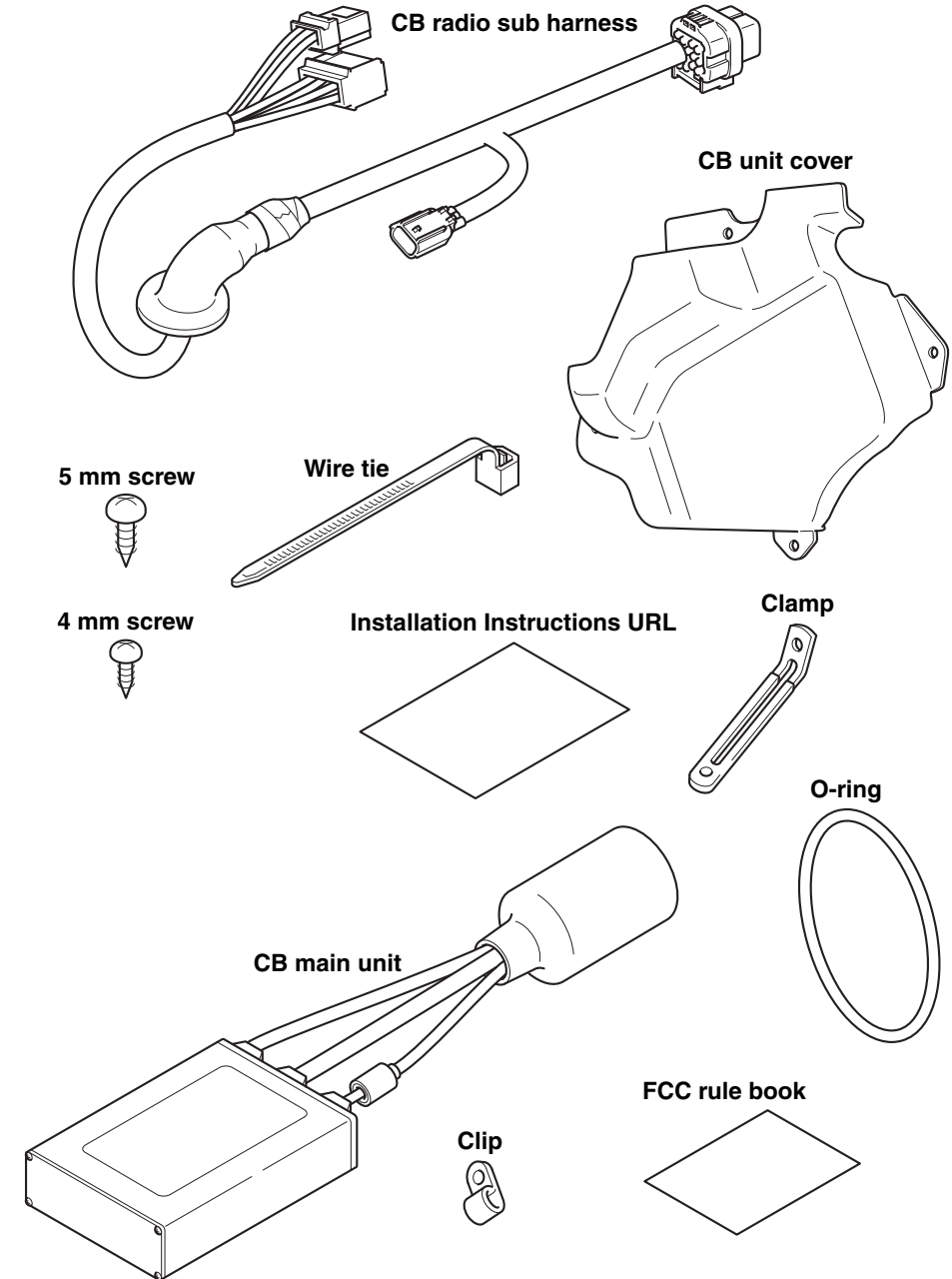
Introduction.....	iii
Notes on Safety .....	iv
Notes to Users .....	iv
Notes for Installation.....	vi
FEATURES .....	2
PACKAGE LIST .....	3
CONTROLLER COMPONENTS.....	4
Handlebar CB Radio Controller .....	4
Passenger CB Radio Controller (Sold separately).....	4
DISPLAY FEATURES .....	5
Display.....	5
BASIC OPERATION.....	6
OTHER FUNCTIONS .....	9
Advanced Operations .....	9
Adjusting Squelch (1 to 20) .....	10
ON/OFF of Roger Beep Function .....	12
DAILY MAINTENANCE.....	14
SPECIFICATIONS.....	15
AFTER-SALES SERVICE.....	16

# FEATURES

This Honda Genuine Accessories motorcycle CB radio complies with the IC Rules and Regulations. It has a power output of 4 watts (4 W) based on the simplex method with 40 channels at AM 27 MHz.

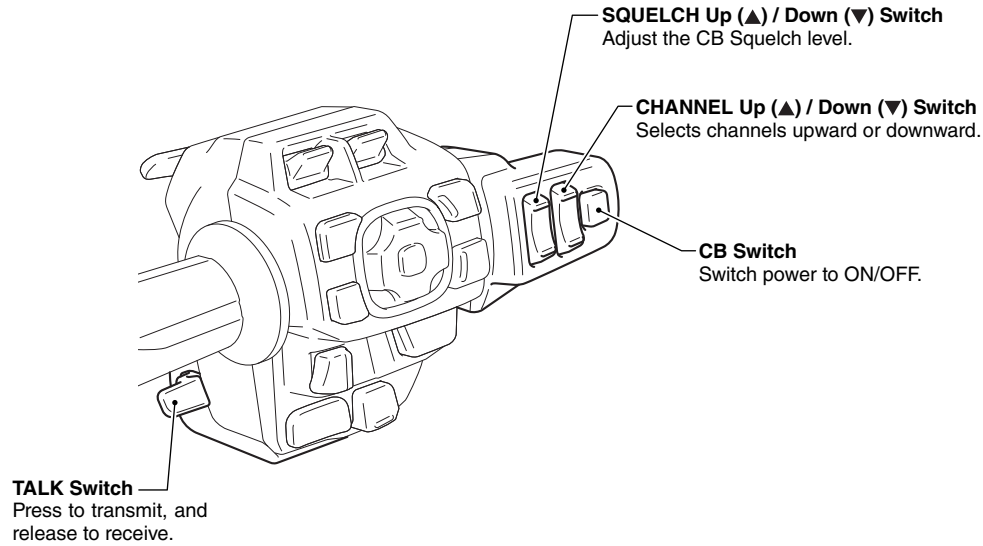
1. All CB radio functions are independent of audio functions and can be controlled separately.
2. All CB radio information is displayed in a format that is easy to view on the display.
3. The sound can be switched between the speakers and headset(s).
4. The switches are ergonomically located to ensure safe operation while riding.
5. To prevent interference with the CB radio, audio functions are automatically muted during reception and transmission.

# PACKAGE LIST

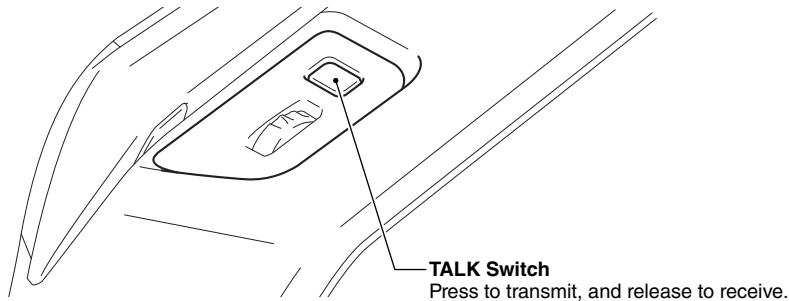


# CONTROLLER COMPONENTS

## Handlebar CB Radio Controller

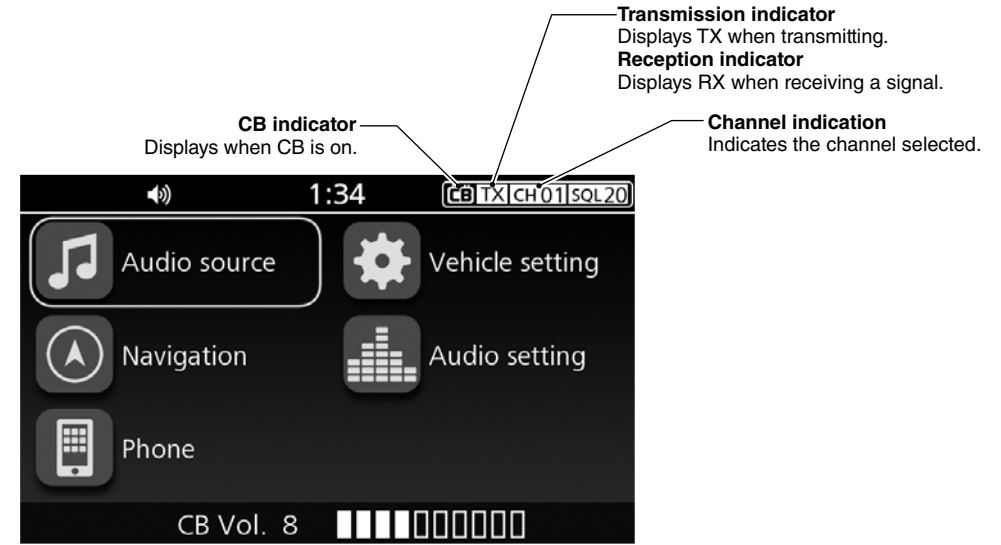


## Passenger CB Radio Controller (Sold separately)



# DISPLAY FEATURES

## Display



The CB radio is normally set to automatically receive a signal. RX is displayed when a signal is received. No indication is made when there is no signal to receive. TX is displayed during transmission.

### Basic indications

- The following icons are shown on the upper right side of the display when the CB radio is operating.



This icon indicates that the CB radio's sound is being transmitted through the speakers.



This icon indicates that the CB radio's sound is being transmitted through the headset(s).

Press the CB switch to switch the sound between the speakers and the headset(s). The displayed icon changes accordingly.

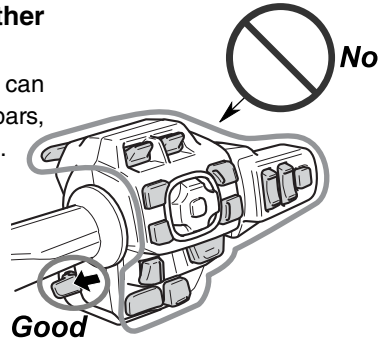
CH indicates the currently used channel (frequency).

RX and TX indicate reception and transmission, respectively.

## ⚠ CAUTION

**While riding, do not operate any switches other than the TALK switch.**

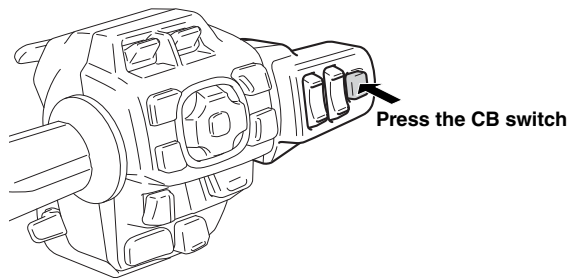
Operating any switch, other than the TALK switch, can interfere with the rider's ability to control the handlebars, which can cause instability that could lead to a crash.



**NOTE :** Lower the side stand and place the motorcycle on a level surface before following the operational procedure.

- You will need a helmet with an internal microphone to make transmissions. You can also buy a headset with a microphone to use with your helmet. Note that some local governments prohibit the use of a headset by the operator of a motor vehicle. Always obey applicable laws and regulations.



## 1 Turning Power ON/OFF



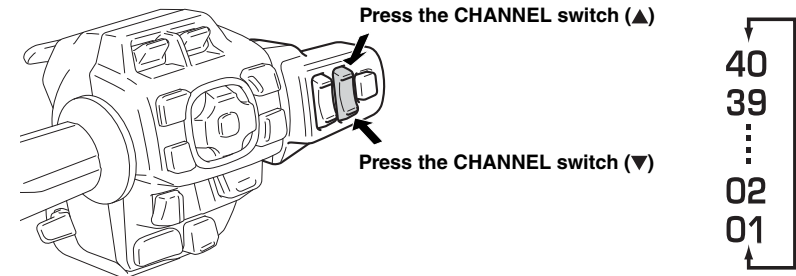
**CB TX CH 01 SQL 20**

- To turn the CB radio ON, press the CB switch on the CB radio controller.
- To turn the CB radio OFF, press and hold the CB switch.

### Switching between speaker and headset

- To switch the CB radio sound output between Speaker and Headset, press the CB button. The displayed icon changes between  and  accordingly.

## 2 Selecting Channel (Channels 1 to 40)



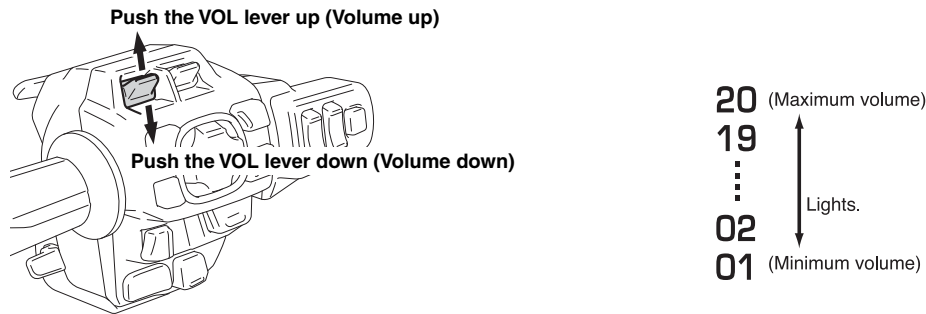
- To select a channel, press the CHANNEL switch UP or DOWN. To change the channel rapidly, press and hold the CHANNEL switch UP or DOWN.

**Channel Indication Number relates to frequency indicated.**

Ch.	MHz	Ch.	MHz
1	26.965	21	27.215
2	26.975	22	27.225
3	26.985	23	27.255
4	27.005	24	27.235
5	27.015	25	27.245
6	27.025	26	27.265
7	27.035	27	27.275
8	27.055	28	27.285
9	27.065	29	27.295
10	27.075	30	27.305
11	27.085	31	27.315
12	27.105	32	27.325
13	27.115	33	27.335
14	27.125	34	27.345
15	27.135	35	27.355
16	27.155	36	27.365
17	27.165	37	27.375
18	27.175	38	27.385
19	27.185	39	27.395
20	27.205	40	27.405

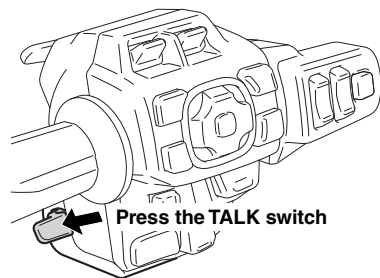
## BASIC OPERATION

### 3 Adjusting Volume (Min. 1 to Max. 20)



- To adjust the volume, push the VOL lever UP or DOWN. To increase or decrease the volume rapidly, push and hold the VOL lever UP or DOWN.
- VOL lever range: from 0 (min) to 20 (max). The CB radio volume can be set independently from the audio volume.

### 4 Transmitting

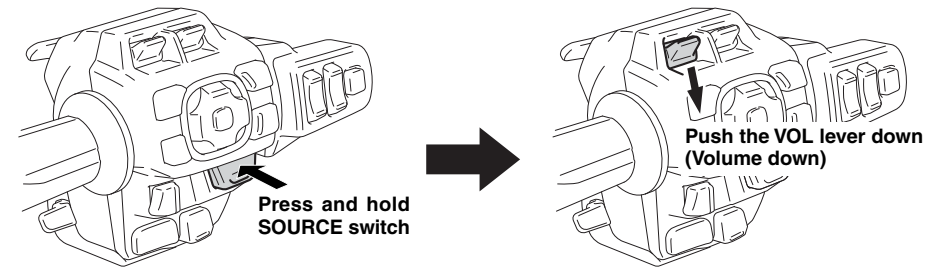


- Press and hold the TALK switch to start transmission. The audio functions are muted during transmission so as to not interfere with communication with the other party.
- When a TALK switch for the passenger (sold separately) is used, pressing the rear TALK switch will allow the passenger to transmit. When both of the TALK switches are pressed, the voice of both the rider and passenger are transmitted.

**NOTE:** Due to the location of the TALK switch, do not risk your safety by trying to press the TALK switch while operating the clutch.

## OTHER FUNCTIONS

### Advanced Operations



Note that the SOURCE switch turns the audio volume down but not the CB radio. Use the VOL lever to turn the volume down so you may hear surrounding noises more clearly.

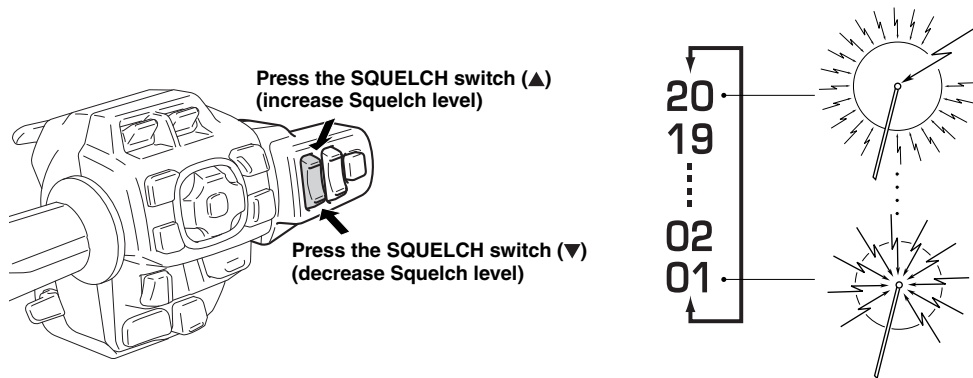


## Adjusting Squelch (1 to 20)

### Squelch

Electrical interference will occur if other CB operators are using the same channel as you are. To avoid such interference, set the SQUELCH switch higher than your current setting. With a higher SQUELCH switch, you will only receive signals from the closest radio signal on your channel.

A squelch setting of 20 will receive strong signals and a squelch setting of 1 will receive weaker signals but will produce noise at all times even when there is no signal present.



- Press the SQUELCH switch lever UP or DOWN to change the squelch level. To rapidly increase or decrease the squelch level, press and hold the SQUELCH switch UP or DOWN.



- The current squelch level is indicated on the display as SQL20. SQUELCH LEVEL range: from 01 (min) to 20 (max)

- The CB radio unit is connected to the audio unit and automatically mutes the sound from the audio unit when a signal is received.

If you set the squelch level to a high setting, only strong signals will be received and those signals will cause the RX icon to appear on the display and simultaneously mute the audio system sound.

If you set a low squelch level, the CB radio will receive unwanted weak or random noise signals. The RX icon will then appear and the sound from the audio will be constantly muted making it difficult to hear.

Slightly raise the squelch level if the audio functions are being muted repeatedly by random noise.

## ON/OFF of Roger Beep Function

### Roger beep

With long distance transmission, the background noise is often so loud that it is difficult to hear what the other party is saying and impossible to know when they have stopped talking. ROGER BEEP is a beep sound that is automatically output when the TALK switch is released and makes it easier for the other party to know that you have stopped talking.



1. Select [Audio setting], and then press interface dial or ENT switch.
2. Select [Sound setting], and then press interface dial or ENT switch.
3. Select [CB roger beep], and then press Interface dial or ENT switch to select (enable) or deselect (disable) the function.

If you experience a problem, check the chart below and follow the Solution instructions.

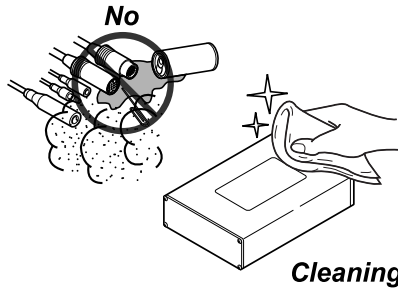
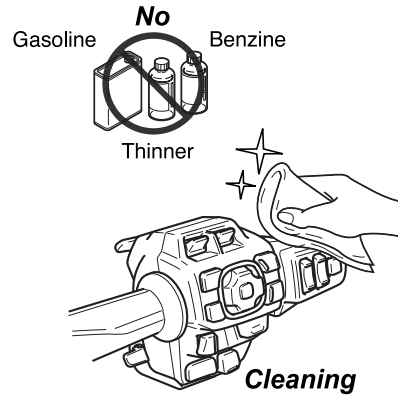
Observation	Cause	Solution
No power (Display shows nothing)	Fuse blown (See the motorcycle's Owner's Manual)	Replace the fuse with the same type. If blown again, consult your dealer.
	Bad connection	Check the wiring connections.
No response to operations/Incorrect indication on display	Malfunction of microcomputer	Disconnect the memory backup power and the main power to reset the memory.
Poor transmission	Loose antenna	Tighten the antenna.
	Antenna bent or broken	If slightly bent, straighten it up. If broken, replace with a new one.
No transmission	Microphone disconnected or broken	Check the microphone connection. If connected but still not working, the microphone may be broken.

# DAILY MAINTENANCE

- Clean the controller with a soft, damp cloth and water. Harsh chemicals may damage the unit.

NOTE: To avoid possible scratching or other damage, use only water and a soft cloth or sponge to clean the controller.

- Do not unplug any connectors during cleaning. If water or dirt gets into the main harness, it may be damaged. If the pins in the connectors are bent, they may no longer provide proper contact.



# SPECIFICATIONS

## General

Power Supply Voltage:	13.2 V DC
Current Consumption:	2.0 A or below (during transmission)
Backup Current Consumption:	1.0 mA or below
Frequency Range:	26.965 MHz to 27.405 MHz (40ch)
Frequency Tolerance:	0.005%
Emission:	A3E (Amplitude Modulation)
Weight:	710g

## Transmitter

Carrier Output Power:	4 W
Output Impedance:	50 $\Omega$ , unbalanced
Hum and Noise Ratio:	40 dB or higher
Modulation Sensitivity:	-13.7 dBV (50% +/-10%)

## Receiver

Sensitivity:	1 $\mu$ V or below for 10 dB (S+N)/N
Hum and Noise Ratio:	35 dB or higher
Distortion:	8% or below
Squelch sensitivity:	Threshold 1 $\mu$ V or below Tight 100 $\mu$ V or higher

## NOTES:

- Specifications comply with EIA Standards.
- Specifications and the design are subject to change without notice.

# AFTER-SALES SERVICE

- **In case of failure**

In the event of a failure during normal use within the warranty period, the product will be repaired without charge according to the conditions specified in the manufacturer's warranty.

Consult your dealer.

- **Repair after warranty expires**

The cost of any repairs outside of the warranty period are the responsibility of the owner.

