



INSTALLATION INSTRUCTIONS

Accessory

HMWPE A-ARM GUARDS
(FRONT)
P/N 0SP74-HL4-200

Application

SXS1000M3/M5 - All

Publication No.

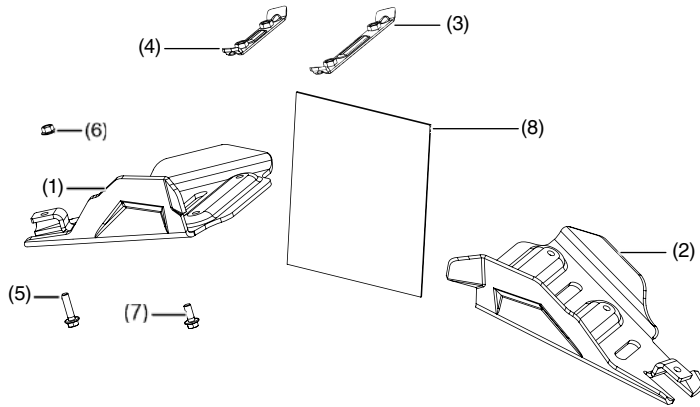
MII 16218

Issue Date

March 2017

Honda Dealer: Please give a copy of these instructions to your customer.

PARTS LIST



No.	Description	Qty
(1)	HMWPE* Right front guard	1
(2)	HMWPE* Left front guard	1
(3)	Long bracket	2
(4)	Short bracket	2
(5)	10 x 40 mm flange bolt	2
(6)	10 mm flange nut	2
(7)	10 x 25 mm flange bolt	8
(8)	Installation instructions URL	1

* High Molecular Weight Polyethylene

TOOLS REQUIRED

Socket (14 mm)

Ratchet

Torque wrench

Box-end wrench (14 mm)

TORQUE CHART

Tighten all screws, bolts, and nuts to their specified torque values. Refer to the Service Manual for the torque values of the removed parts.

Item	N-m	kgf-m	lbf-ft
10 mm flange bolt	43	4.4	32

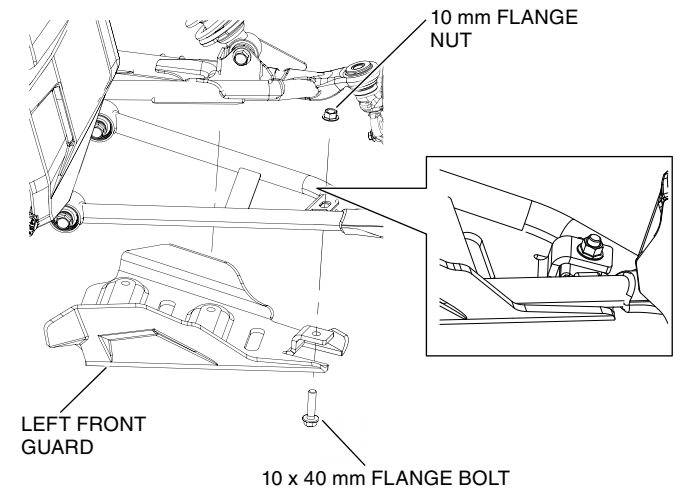
INSTALLATION

⚠ CAUTION

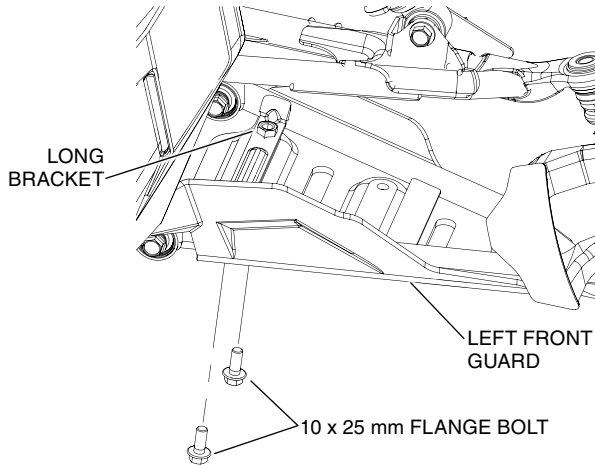
To prevent burns, allow the engine, exhaust system, radiator, etc., to cool before installing the accessory.

- Loosely install the left front guard as shown.

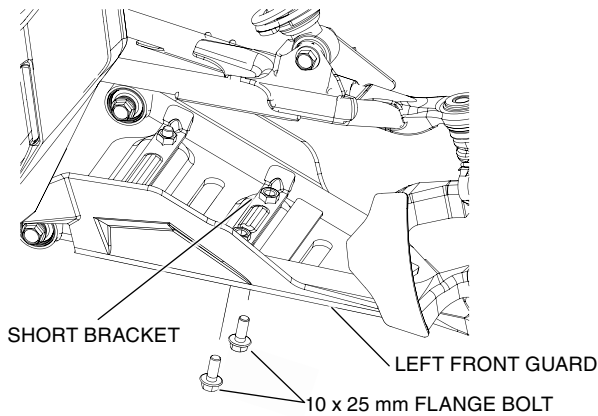
<Left side>



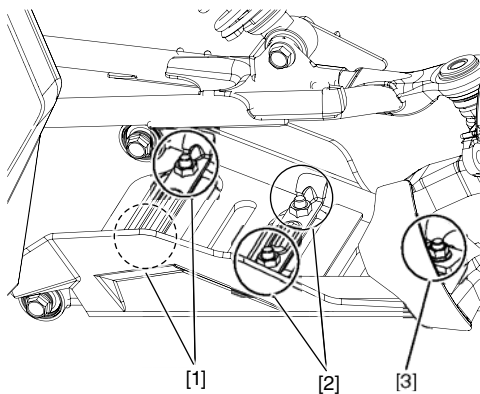
2. Loosely install the long bracket as shown.



3. Loosely install the short bracket as shown.



4. Tighten the loosely installed large bracket hardware [1] to the value specified in the TORQUE CHART.
5. Tighten the loosely installed small bracket hardware [2] to the value specified in the TORQUE CHART.
6. Tighten the remaining loosely installed hardware [3] to the value specified in the TORQUE CHART.



7. Repeat Steps 1 through 6 to install the right front A-arm guard.