



# INSTALLATION INSTRUCTIONS

Accessory

TRAILING ARM GUARDS  
P/N 0SK11-HL6-A00

Application

SXS1000S2X

Publication No.

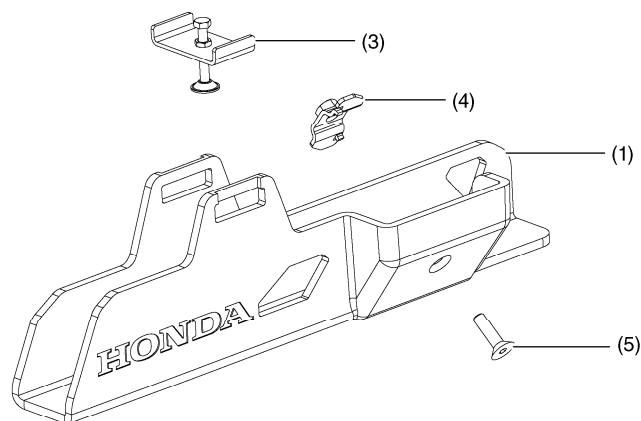
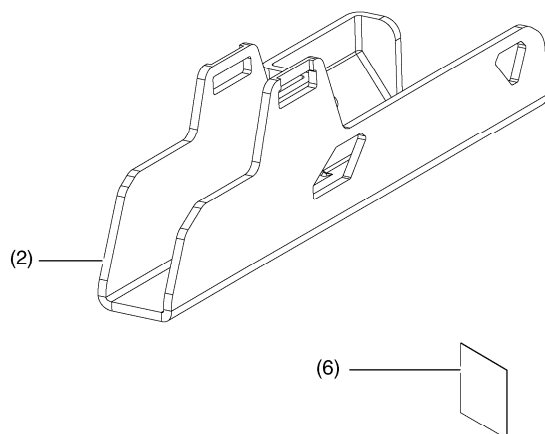
MII 16561

Issue Date

December 2019

**Honda Dealer: Please give a copy of these instructions to your customer.**

## PARTS LIST



No.	Description	Qty
(1)	Left arm guard	1
(2)	Right arm guard	1
(3)	Top attachment bracket assembly	2
(4)	Side attachment bracket	2
(5)	5 x 30 mm flat head hex screw	2
(6)	Installation Instructions URL	1

## TOOLS REQUIRED

Socket (10 mm)

Ratchet

Torque wrench

Box-end wrench (10 mm)

Hex wrench (5 mm)

## TORQUE CHART

Tighten all screws, bolts, and nuts to their specified torque values. Refer to the Service Manual for the torque values of the removed parts.

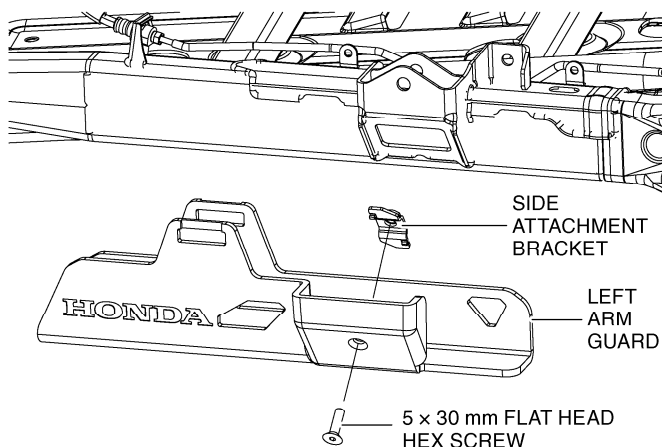
Item	N-m	kgf-m	lbf-ft
10 mm bolt (in bracket assembly)	9	0.92	6.5
5 mm flat head hex screw	22	2.2	16

## INSTALLATION

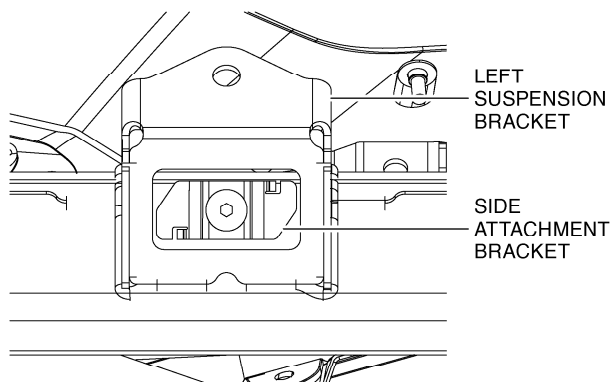
### ⚠ CAUTION

To prevent burns, allow the engine, exhaust system, radiator, etc., to cool before installing the accessory.

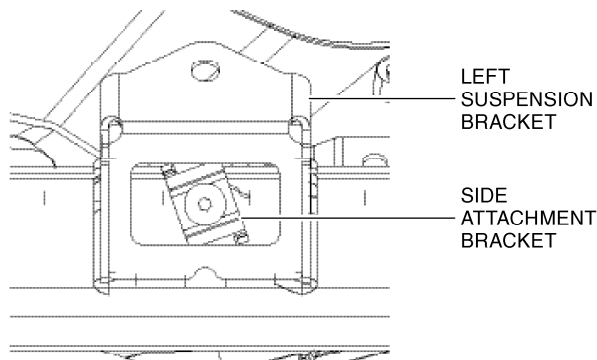
1. Start on the left side. Loosely install the side attachment bracket to the left arm guard using a 5 × 30 mm flat head hex screw.



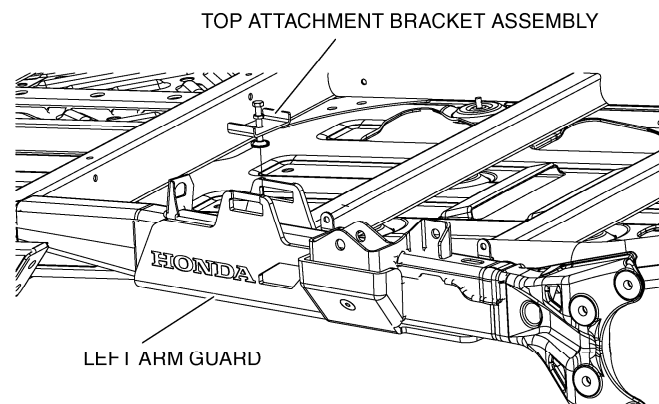
2. Position the side attachment bracket horizontally and insert the bracket through the rectangular hole in the rear arm of the vehicle.



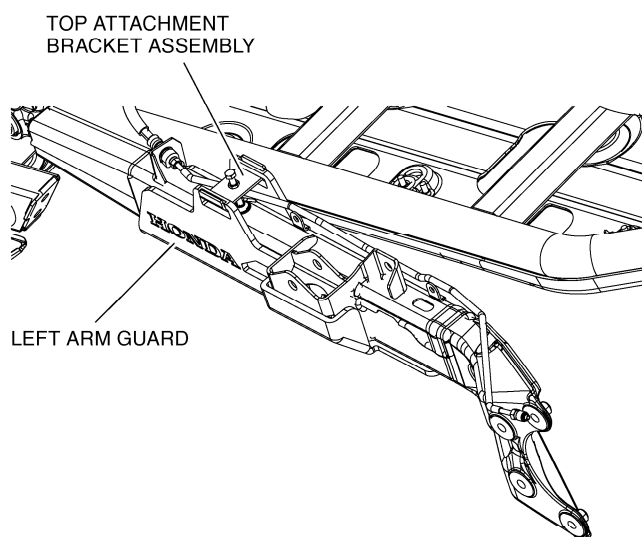
3. Rotate the side attachment bracket to its most vertical position when it contacts the suspension bracket and tighten the 5 × 30 mm flat head hex screw to the value specified on the TORQUE CHART.



4. Unscrew the bolt and nut of the top attachment bracket assembly.



5. Insert the top bracket assembly on the left arm guard as shown below. Be sure to center the bracket assembly in relation to the suspension arm then tighten the 10 mm bolt of the top bracket assembly to the value specified in the TORQUE CHART. Tighten the 10 mm nut of the top bracket assembly.



6. Repeat steps 1 through 5 on the right side.