



# INSTALLATION INSTRUCTIONS

Accessory

**HORN MOUNT**  
**P/N 08Z77-HL4-A00**  
**P/N 0SZ77-HL4-A00**

Application

**SXS1000M3/M5/M6**

Publication No.

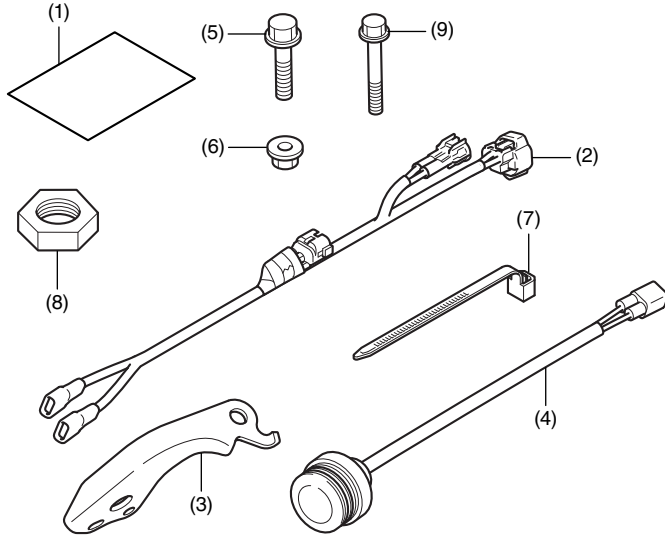
**MII 15262**

Issue Date

**Revised: November 2022**

**Honda Dealer: Please give a copy of these instructions to your customer.**

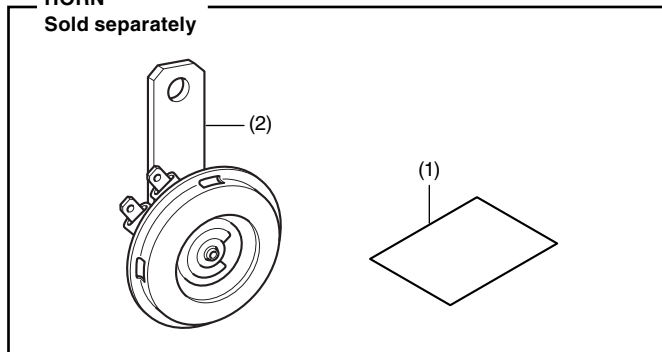
## PARTS LIST



No.	Description	Qty
(1)	Installation Instructions URL	1
(2)	Horn sub harness	1
(3)	Horn stay	1
(4)	Horn switch	1
(5)	8 mm flange bolt	1
(6)	8 mm flange nut	1
(7)	Wire tie	9
(8)	16 mm hex nut	1
(9)	6 mm flange bolt	2

## HORN

**Sold separately**



No.	Description	Qty
(1)	Installation Instructions URL	1
(2)	Horn	1

## TOOLS AND SUPPLIES REQUIRED

- Socket (10 and 12 mm)
- Ratchet
- Box-end wrench (12 and 22 mm)
- Electric drill
- Hole saw (16 and 20 mm)
- Side cutters
- Torque wrench

## TORQUE CHART

Tighten all screws, bolts, and nuts to their specified torque values. Refer to the Service Manual for the torque values of the removed parts.

Item	N-m	kgf-m	lbf-ft
6 mm flange bolt	12	1.2	9
8 mm flange nut	27	2.8	20
16 mm hex nut	1.5	0.1	1.1

# INSTALLATION

## ▲ CAUTION

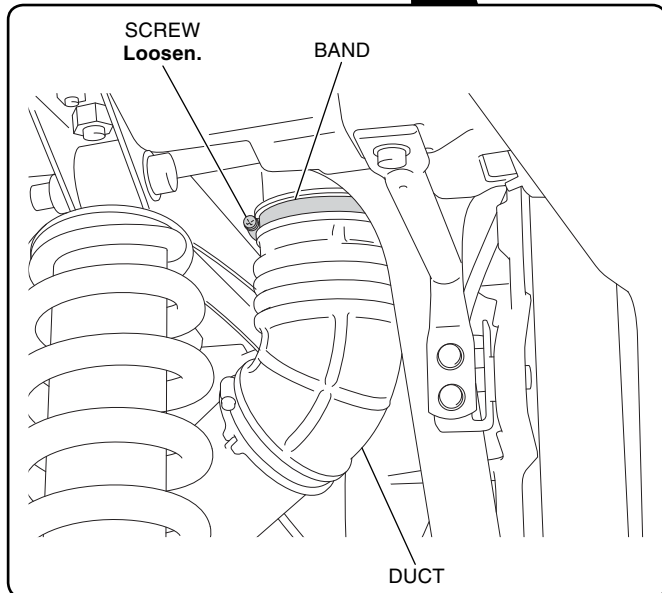
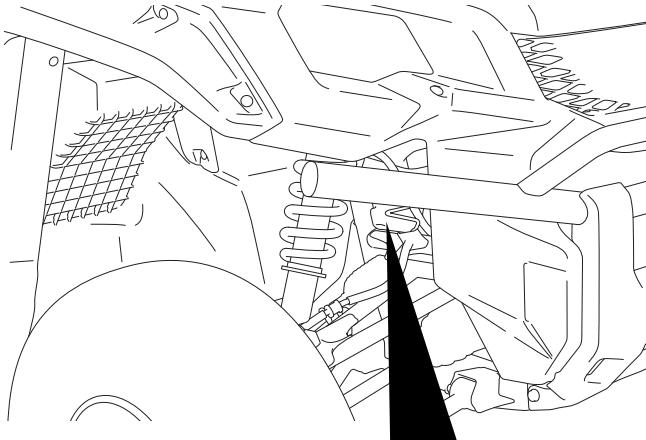
- To prevent burns, allow the engine, exhaust system, radiator, etc., to cool before installing the accessory.

### NOTE:

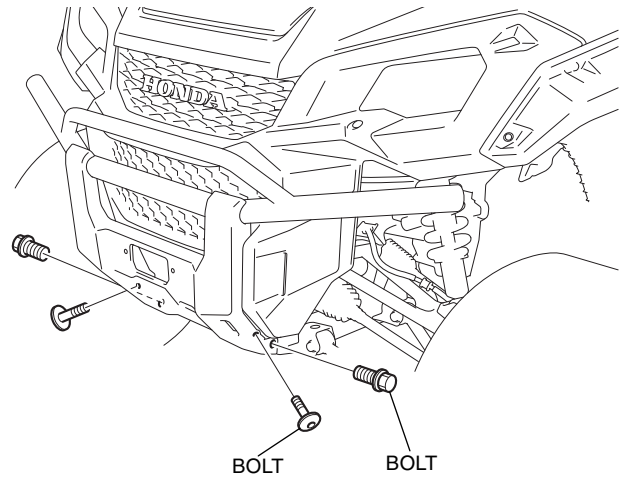
- Disconnect the battery negative (-) cable before installing this accessory.
- The memory of the clock will be erased when you disconnect the battery. Reset the clock after reconnecting the battery.
- Cut each wire tie 5 mm from the lock part after attaching them to the wire harnesses. Do not allow the cut part of the wire tie to interfere with another harness or brake hose.
- Reinstall the removed parts on the vehicle and make sure that the wires and harnesses are not pinched.
- For installation of this accessory on a SxS equipped with the winch mount, refer to the installation instructions included with the winch mount as well.

1. Loosen the band as shown.

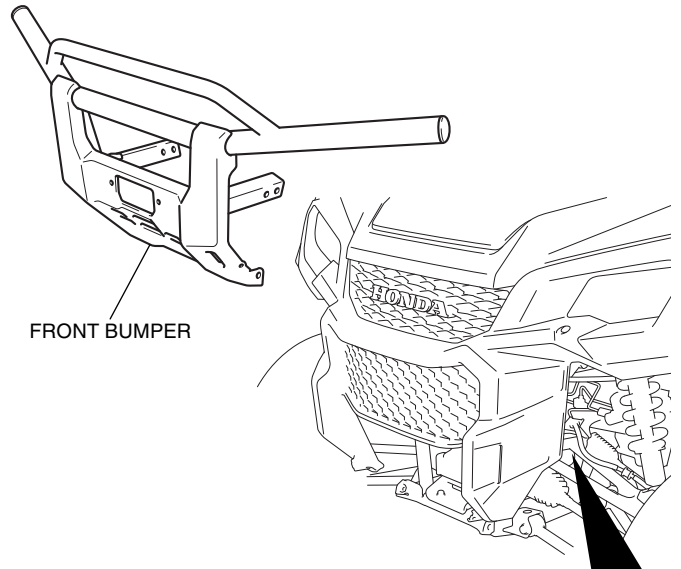
<Right side>



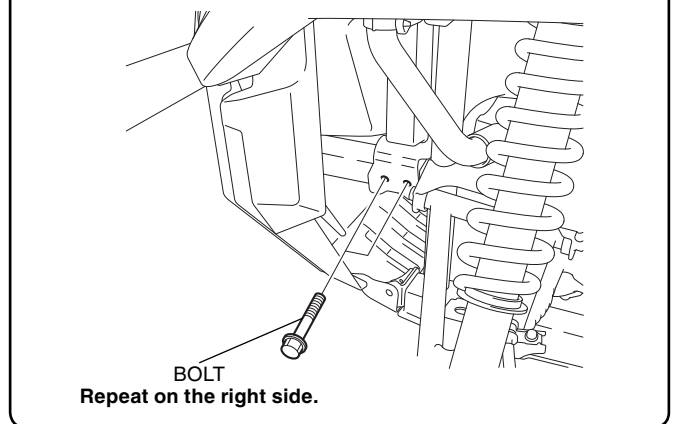
2. Remove the vehicle's parts as shown.



3. Remove the front bumper as shown.

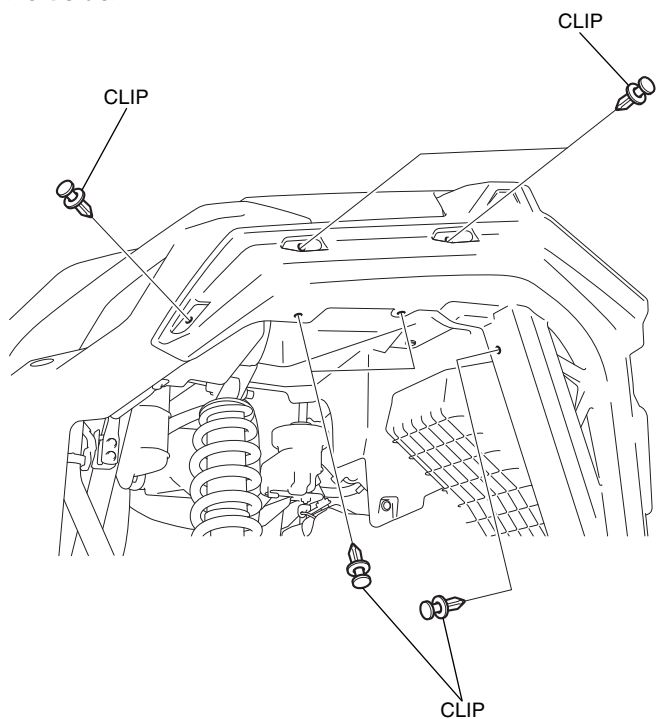


Remove the bolts as shown.

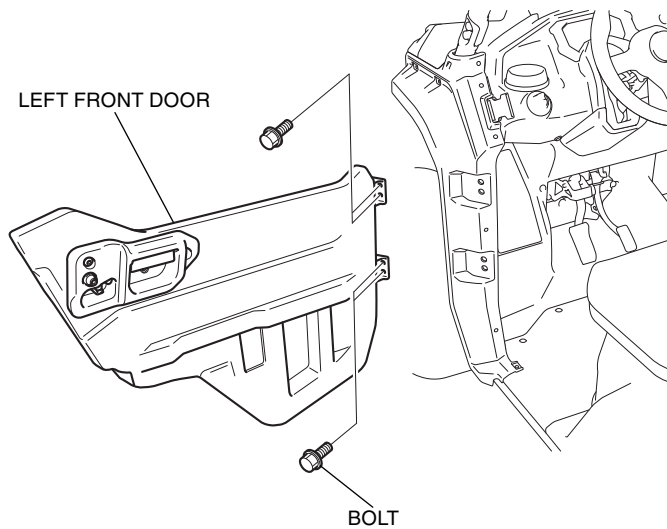


4. Remove the clips as shown.

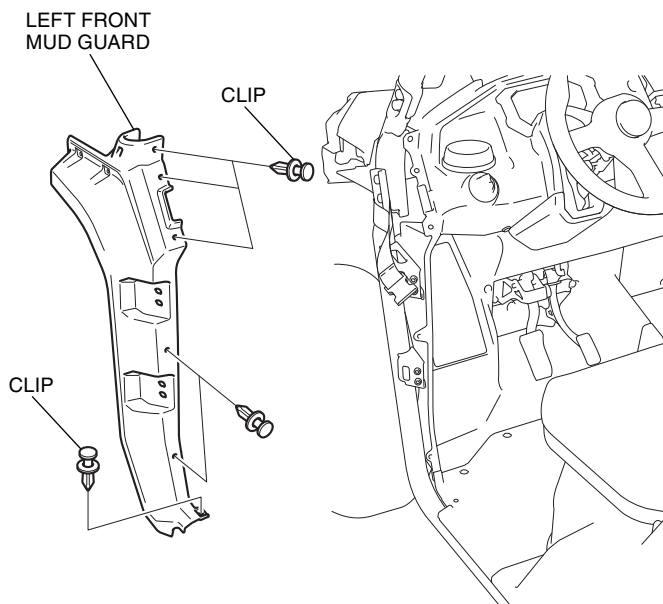
<Left side>



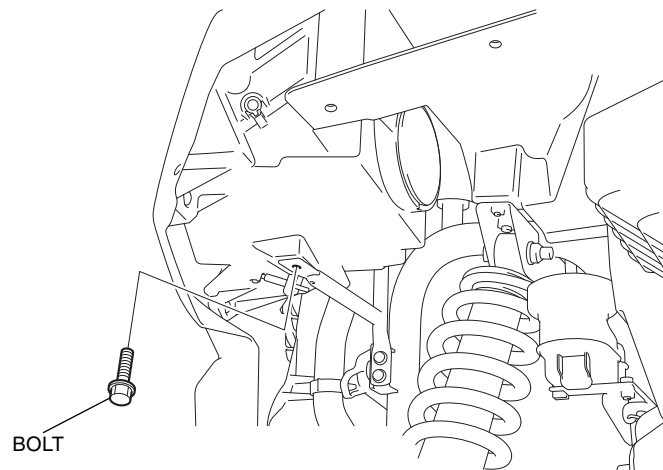
5. Remove the left front door as shown.



6. Remove the left front mud guard as shown.

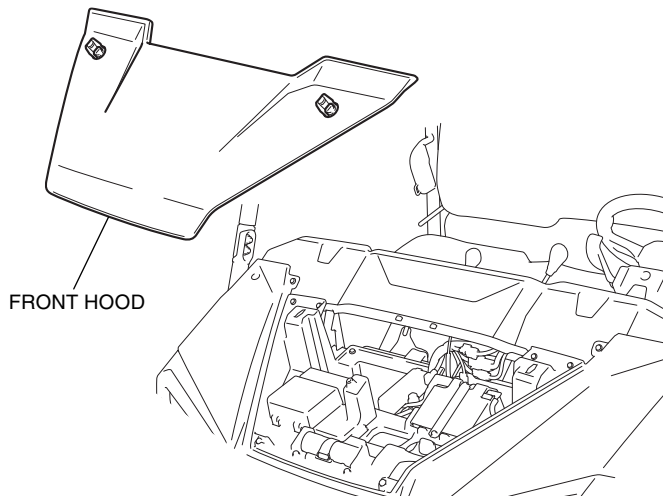


7. Remove the bolt as shown.

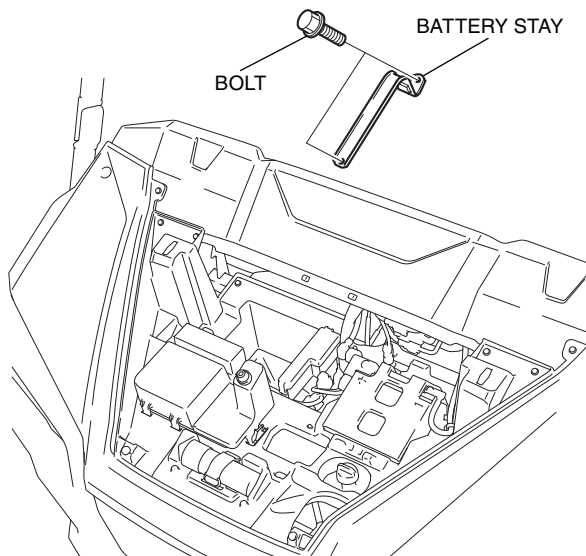


8. Repeat on the right side.

9. Remove the front hood as shown.

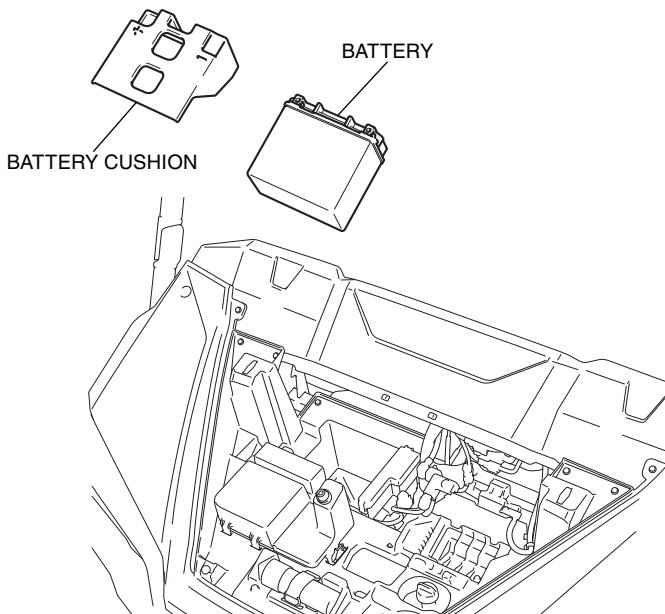


10. Remove the battery stay as shown.



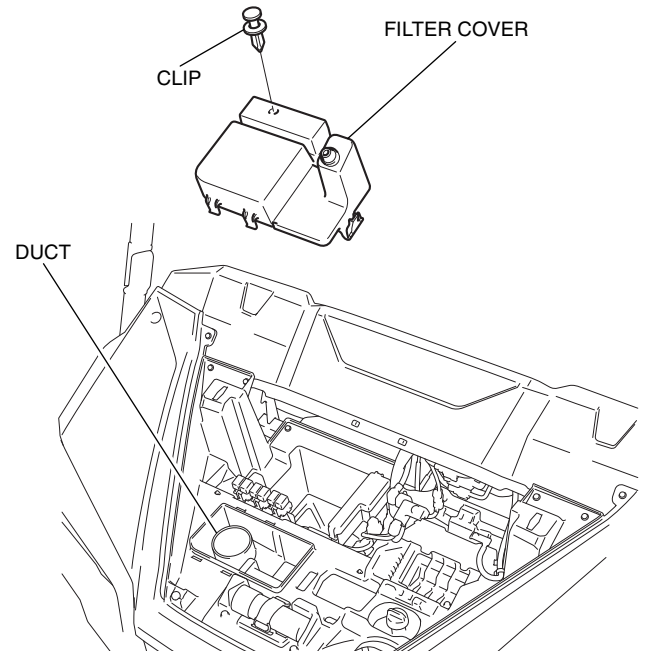
11. Remove the battery and battery cushion as shown.

- **Disconnect the negative (-) cable first.**

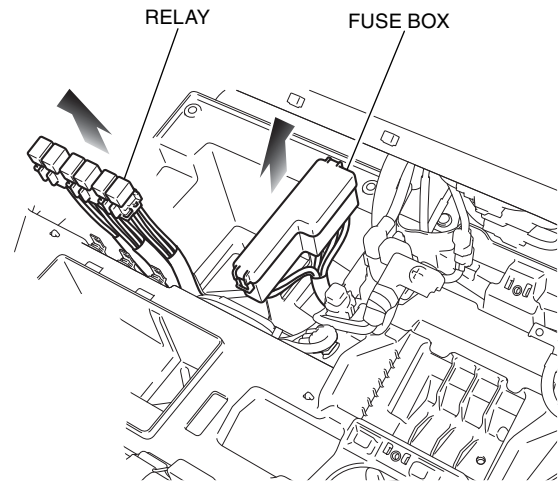


12. Remove the filter cover as shown.

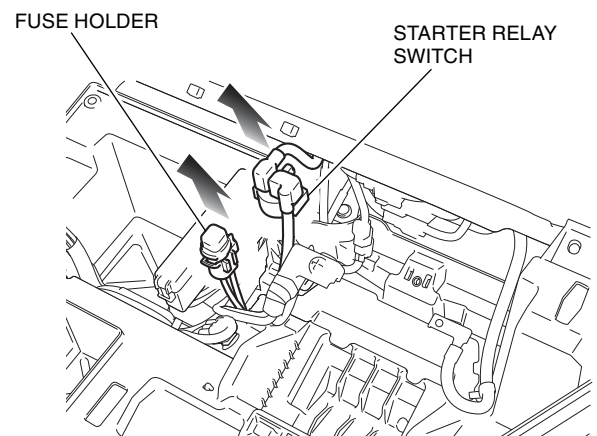
- **Cover the duct with a shop towel or similar to prevent debris from entering the duct.**



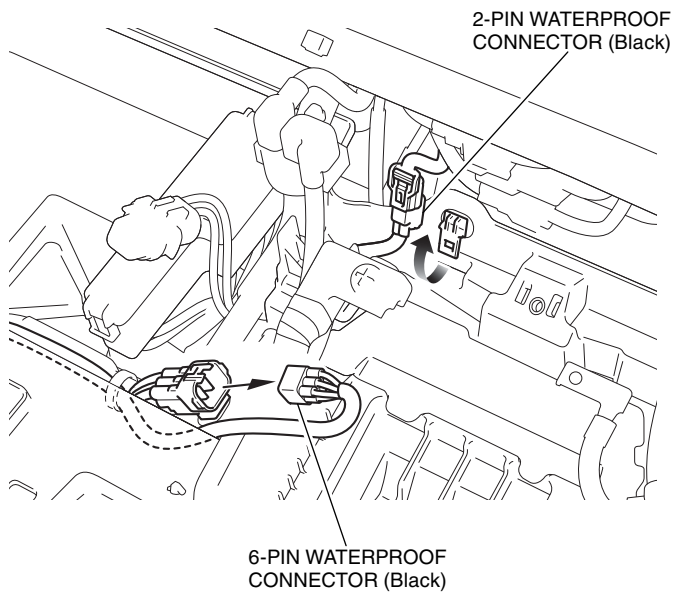
13. Remove the relay and fuse box as shown.



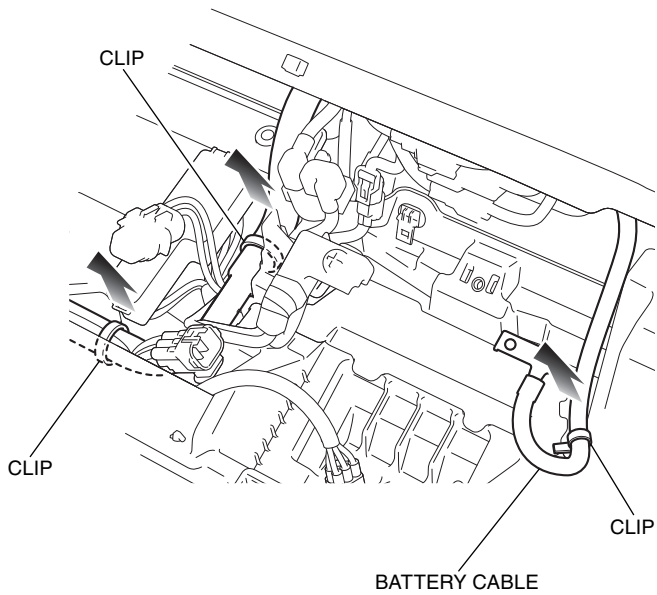
14. Remove the fuse holder and starter relay switch as shown.



15. Remove the connectors as shown.

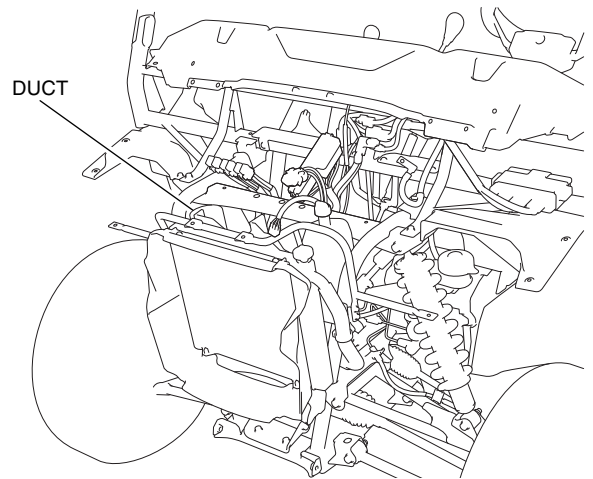
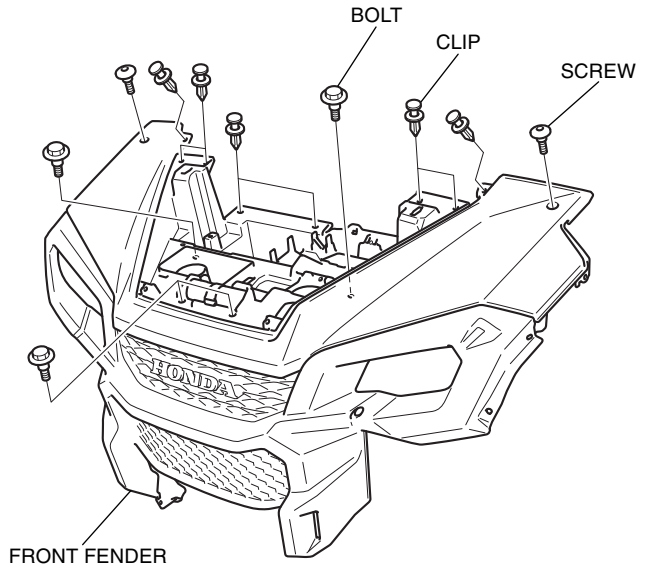


16. Remove the clips as shown.

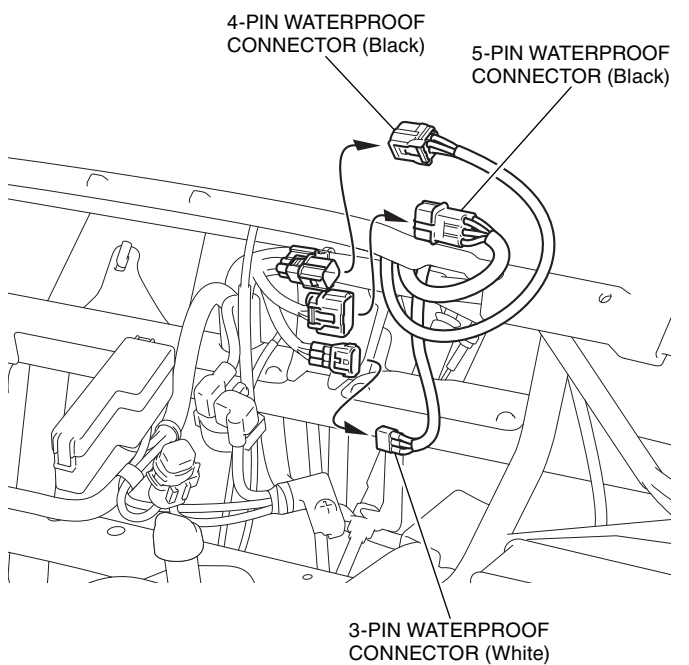


17. Remove the front fender as shown.

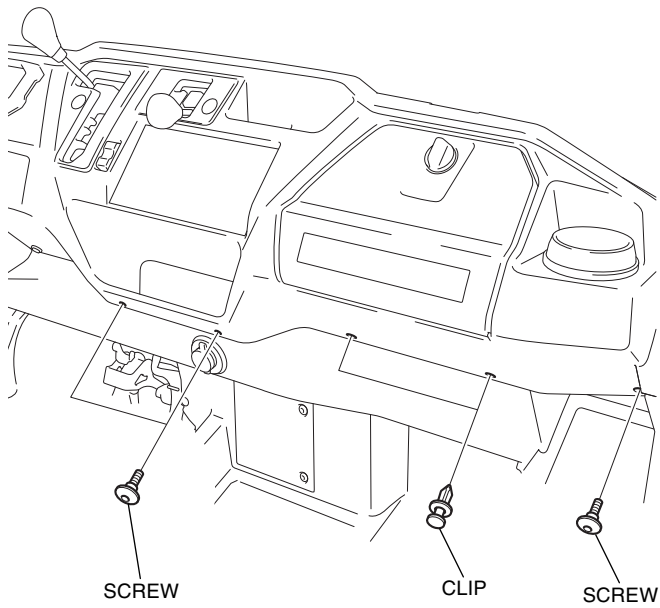
- Cover the duct with a shop towel or similar to prevent debris from entering the duct.



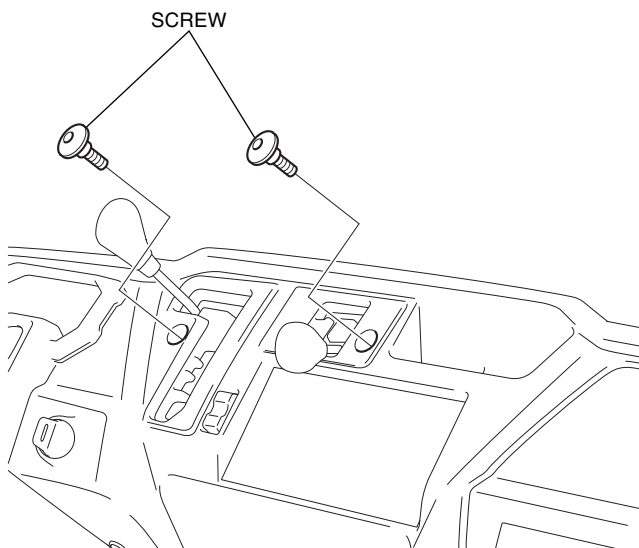
18. Disconnect the connectors as shown.



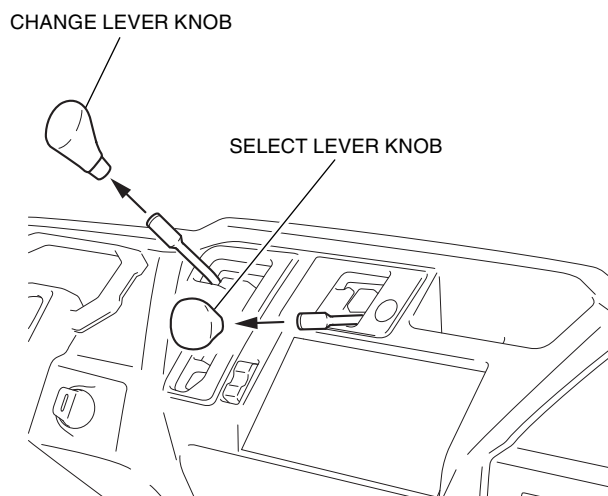
19. Remove the parts as shown.



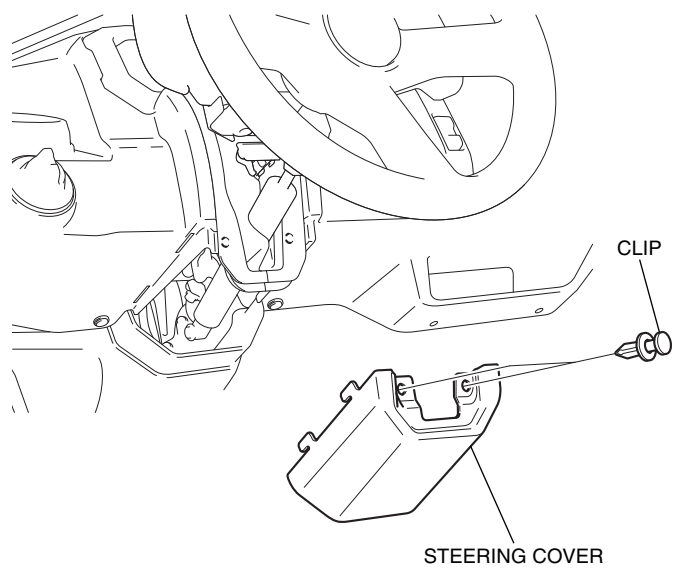
20. Remove the screws as shown.



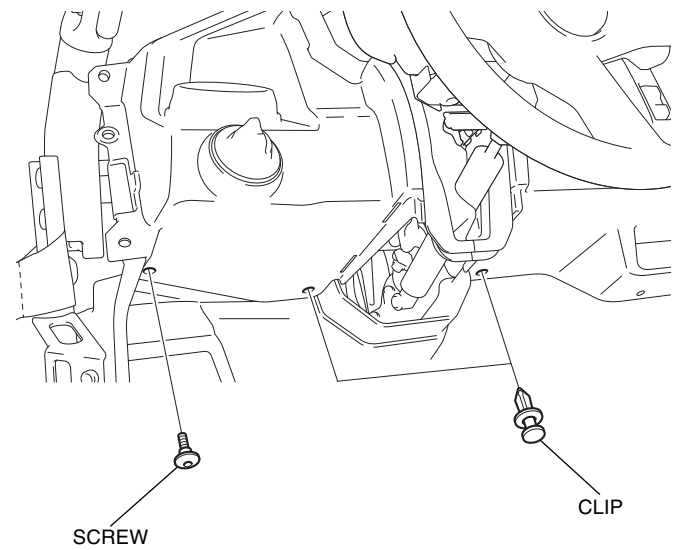
21. Remove the select lever knob and change lever knob as shown.



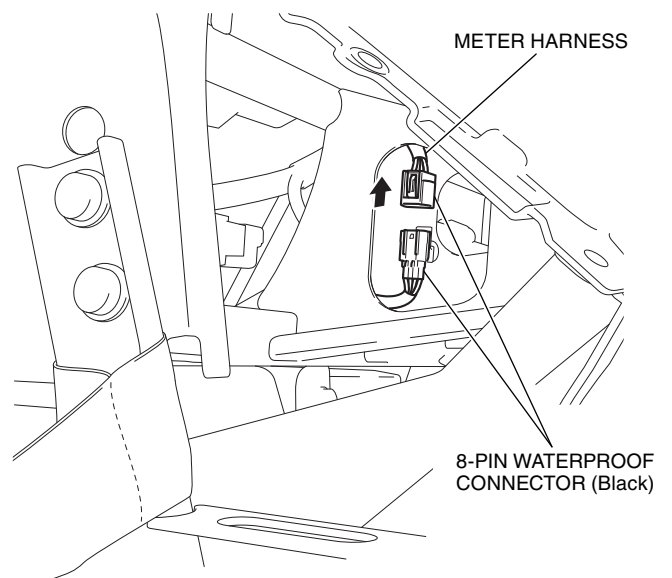
22. Remove the steering cover as shown.



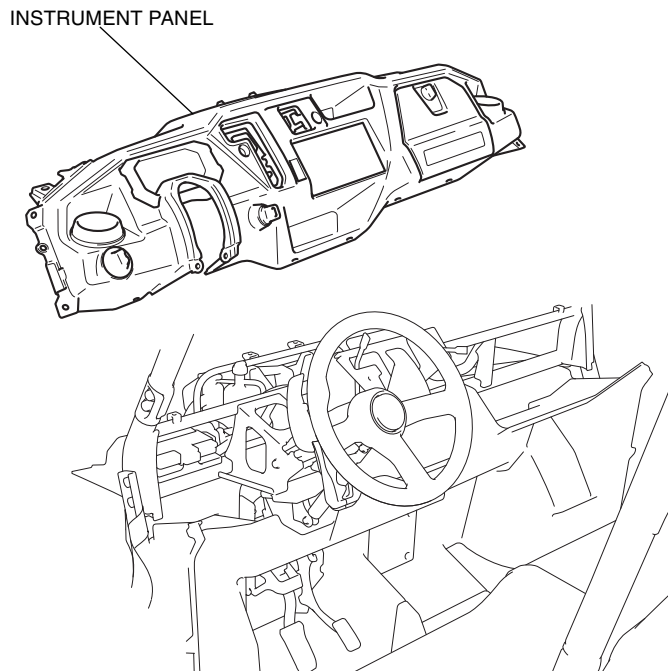
23. Remove the parts as shown.



24. Disconnect the connector as shown.  
<Left side>

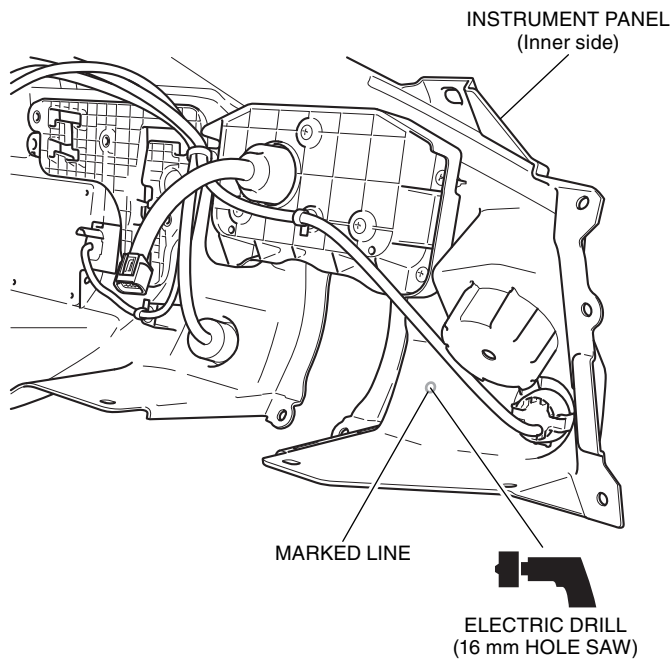


25. Remove the instrument panel as shown.

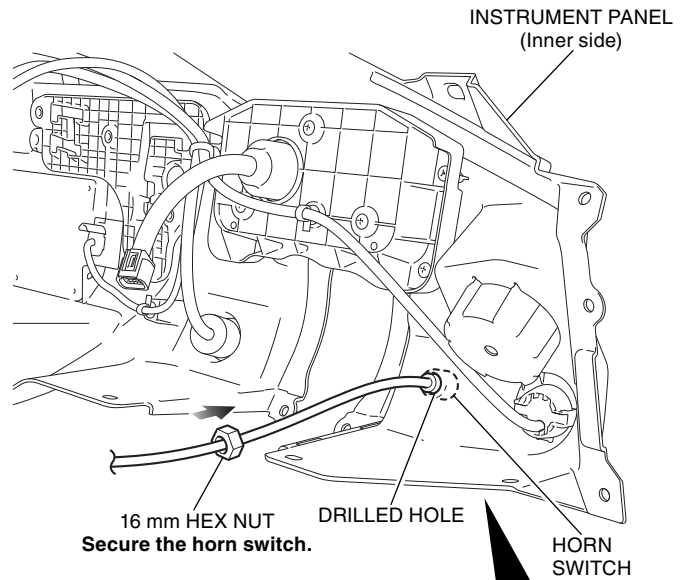


26. Drill the instrument panel as shown.

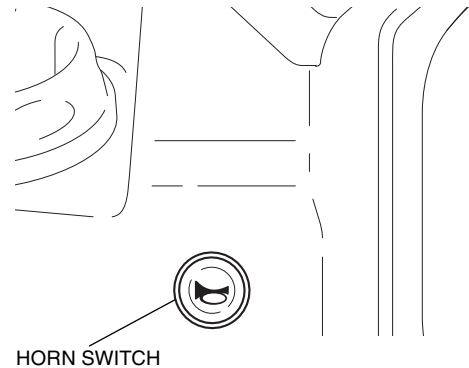
- Drill a 16 mm hole at the center of the marked line.
- Remove any burrs from the edge of the hole.



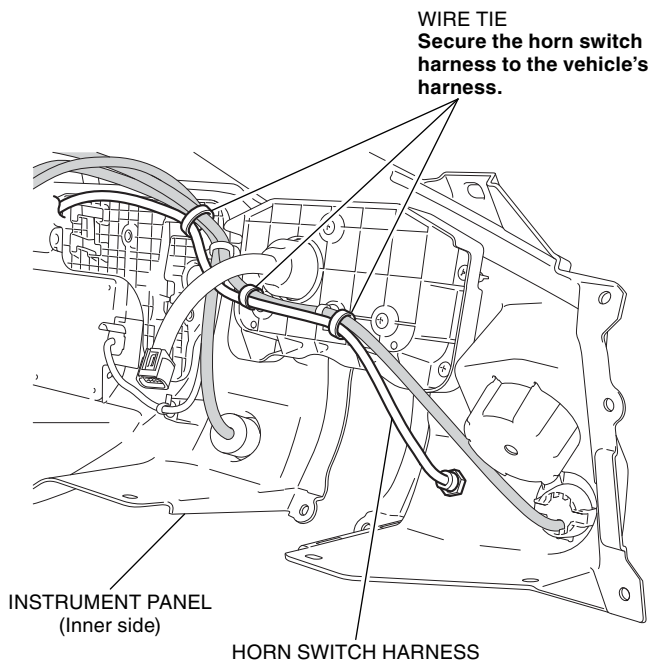
27. Install the horn switch as shown.



Install the horn switch so the "horn" icon faces the direction shown.

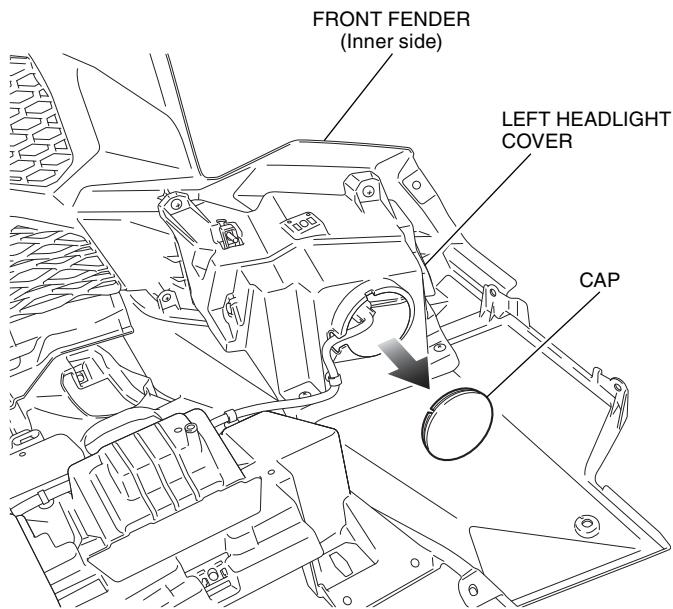


28. Secure the horn switch harness with the wire ties as shown.

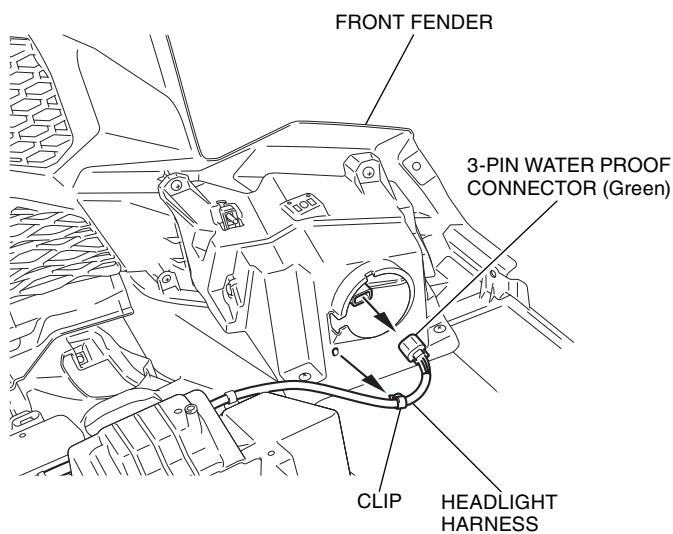


29. Remove the cap as shown.

<Left side>

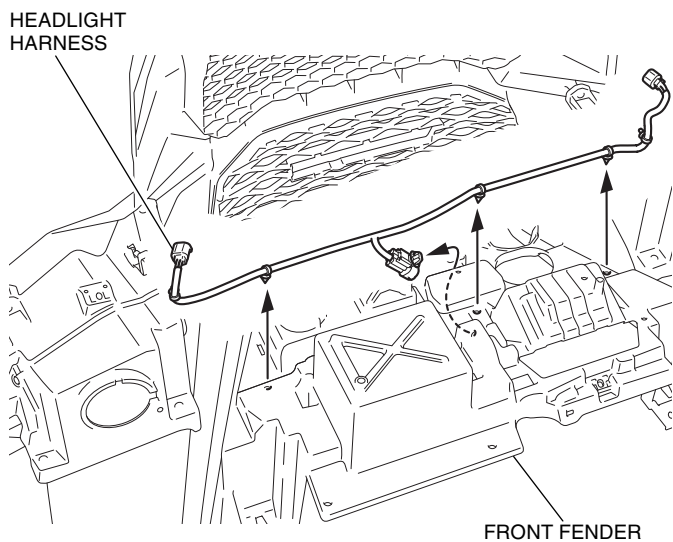


30. Remove the clip and connector as shown.



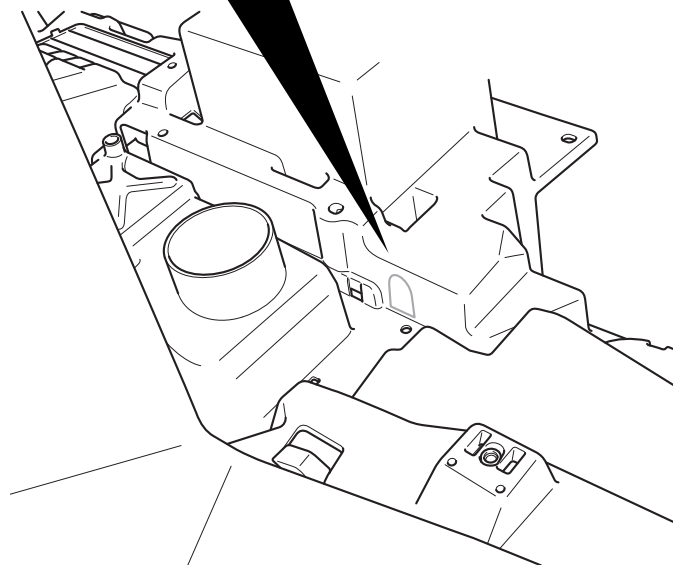
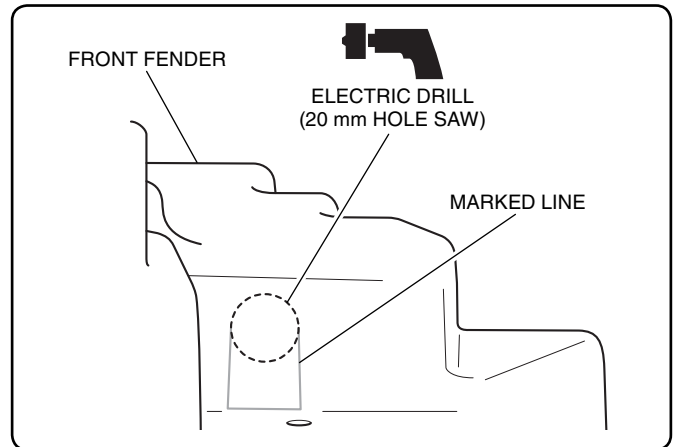
31. Repeat on the right side.

32. Remove the headlight harness as shown.



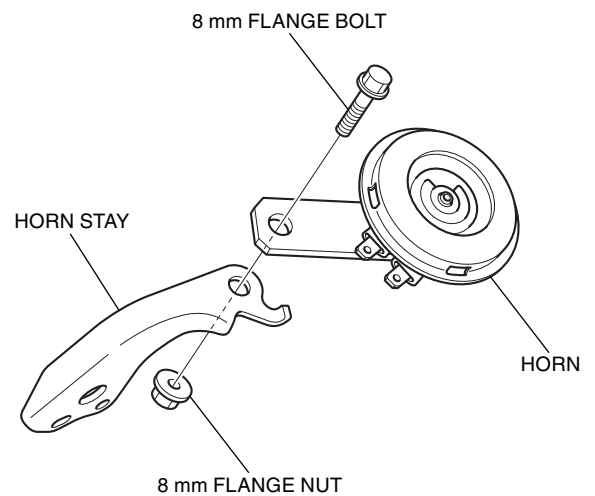
33. Drill the front fender as shown.

- Drill a 20 mm hole at the center of the marked line.
- Remove any burrs from the edge of the hole.



34. Install the headlight harness, caps and connectors in the reverse order of removal.

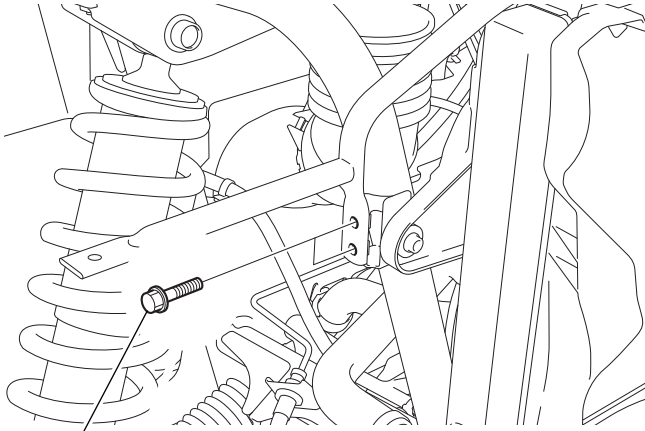
35. Install the horn on the horn stay as shown.





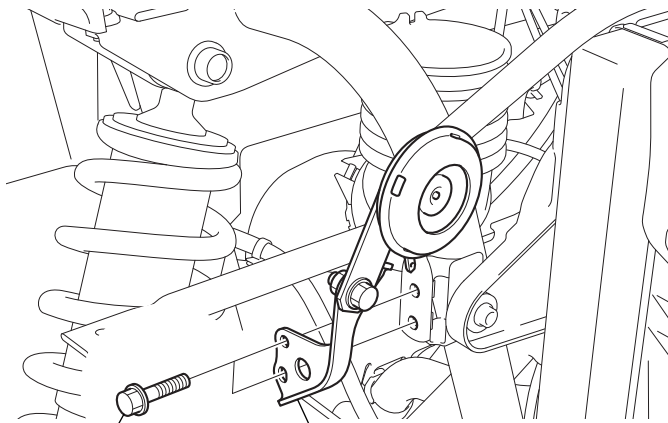
36. Remove the bolts as shown.

<Right side>



BOLT (Save)

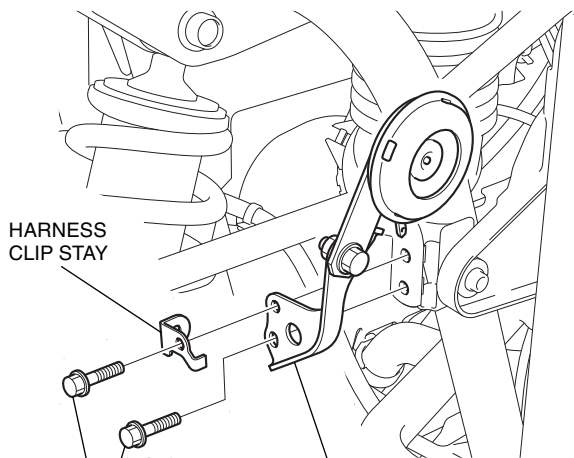
37. Install the assembled horn as shown.



6 mm FLANGE BOLT

ASSEMBLED HORN

When also installing the Winch Mount:

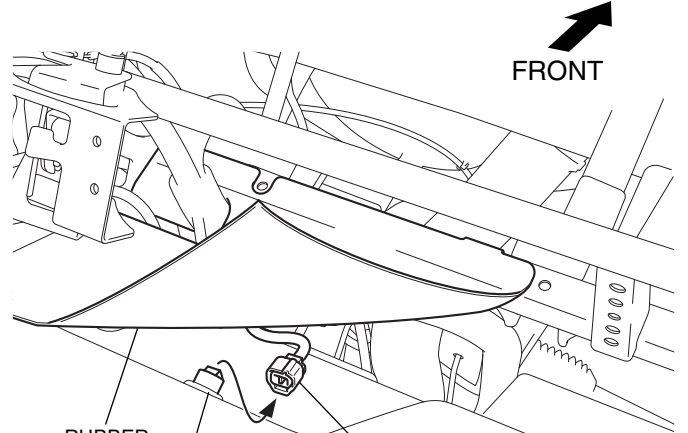


HARNES  
CLIP STAY

ASSEMBLED HORN

6 mm FLANGE BOLT

38. Pull the rubber guard and remove the indicated connector.



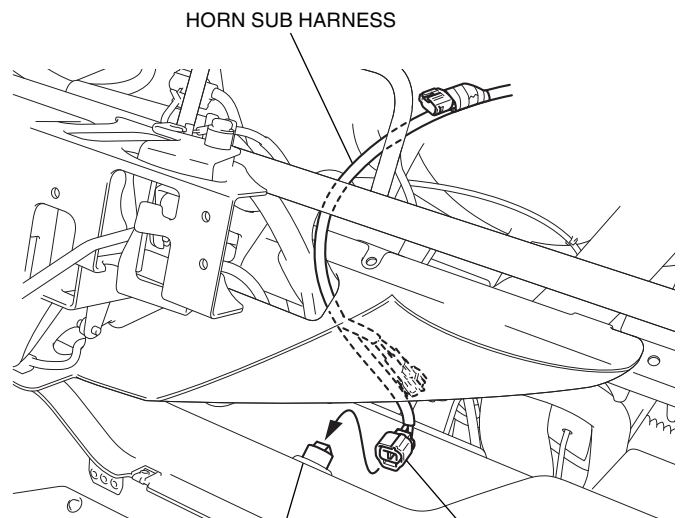
FRONT

RUBBER

ACCESSORY  
SOCKET

2-PIN WATERPROOF  
CONNECTOR (Black)

39. Route and connect the horn sub harness as shown.

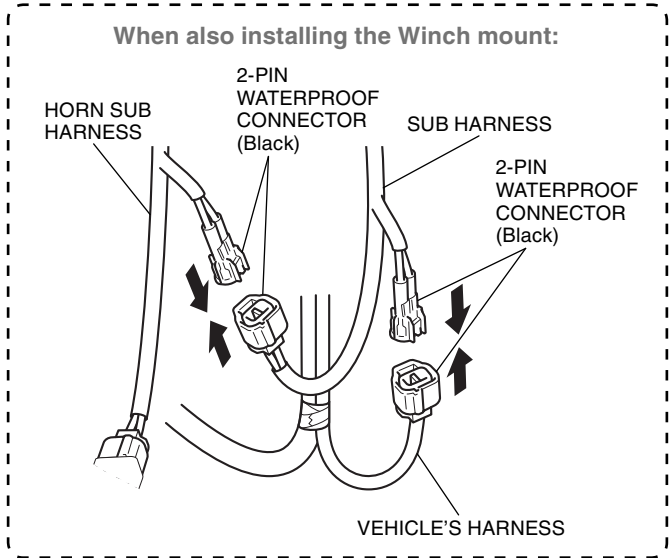
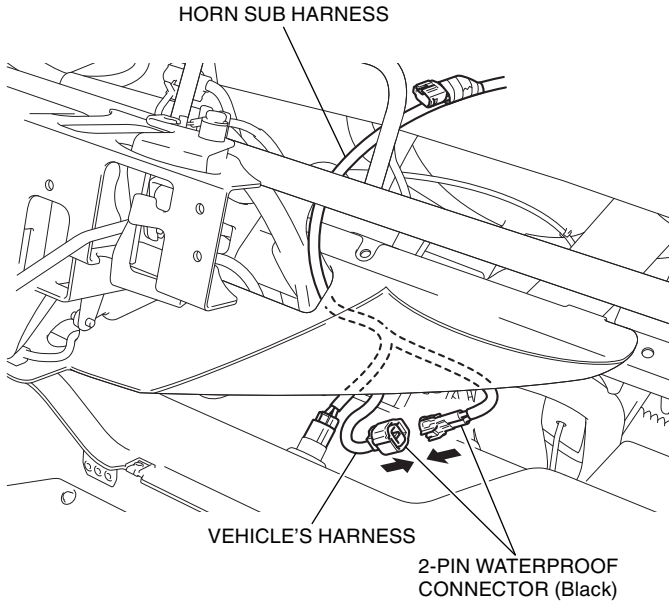


HORN SUB HARNESS

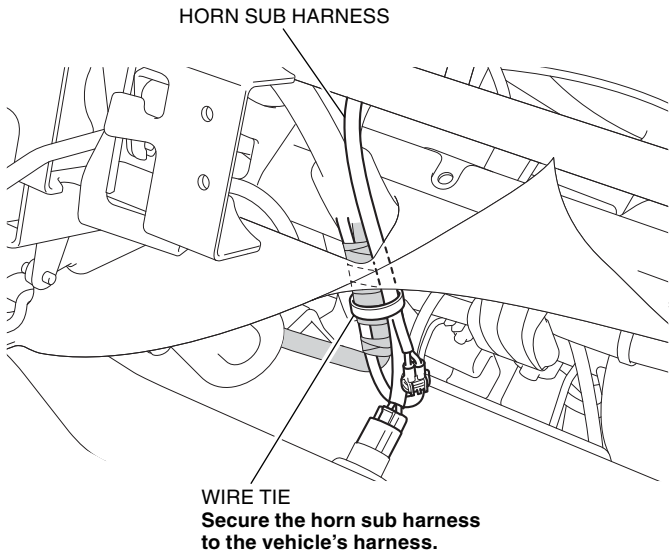
ACCESSORY  
SOCKET

2-PIN WATERPROOF  
CONNECTOR (Black)

40. Connect the horn sub harness to the vehicle's harness as shown.

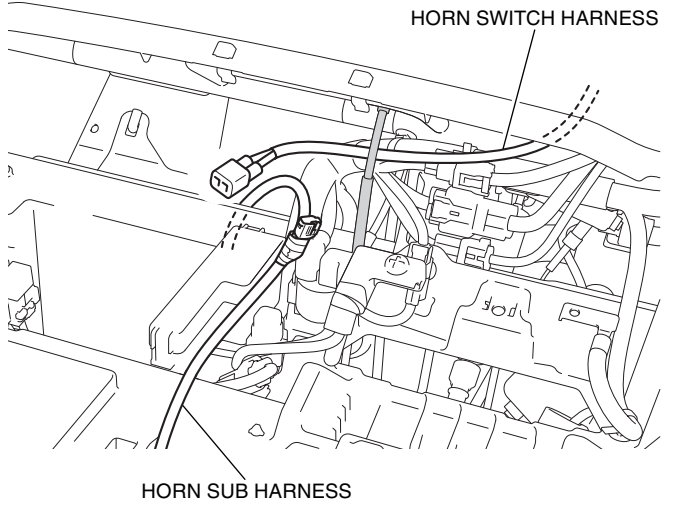


41. Secure the horn sub harness with the wire tie as shown.

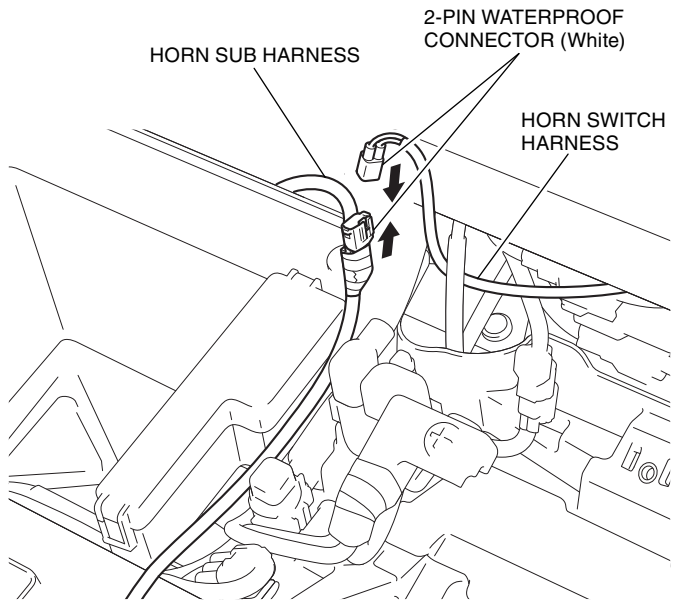


42. Install the front fender and instrument panel in the reverse order of removal and route the horn switch harness and horn sub harness as shown.

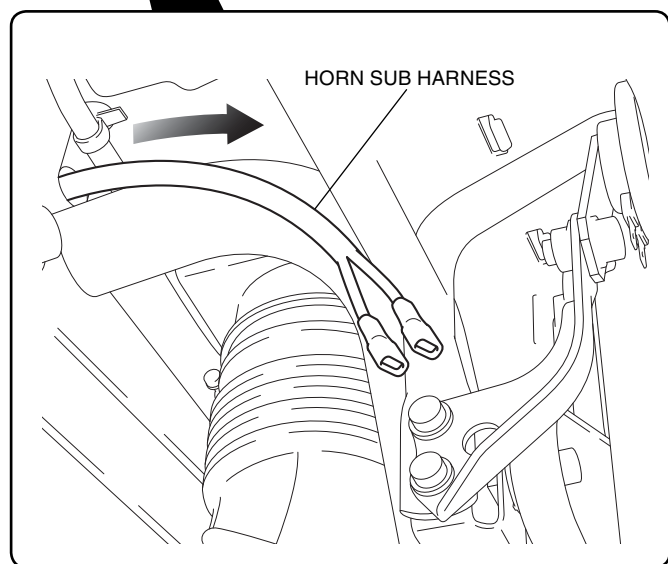
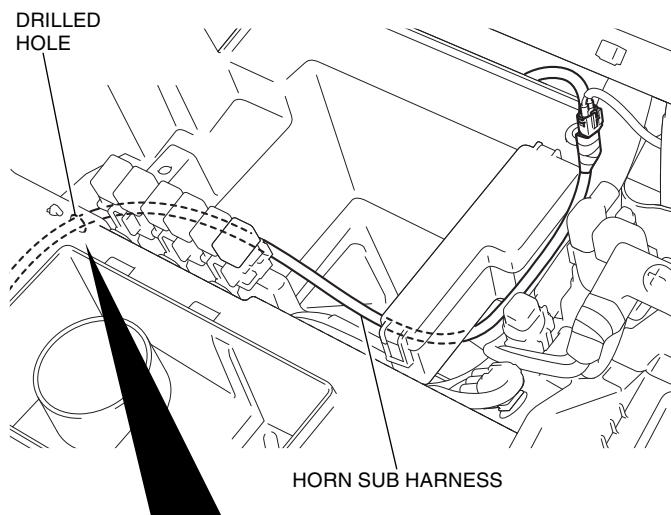
- Remove the shop towel/cover from the duct.



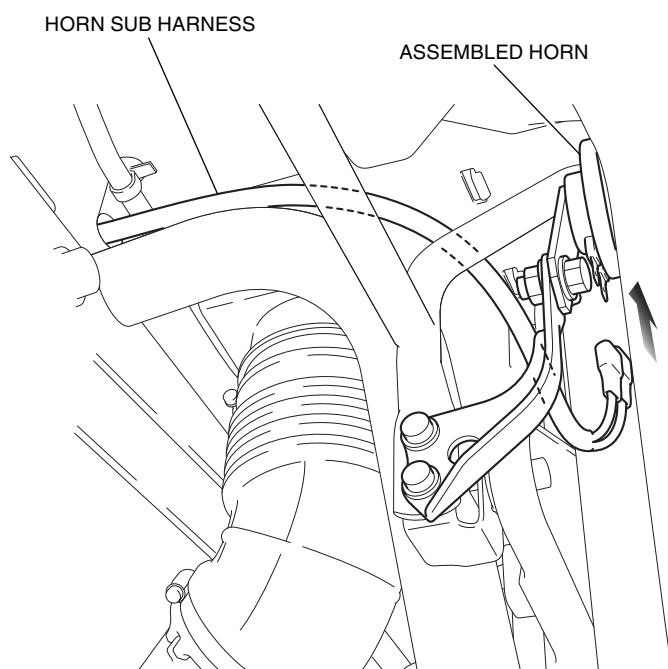
43. Connect the horn sub harness as shown.



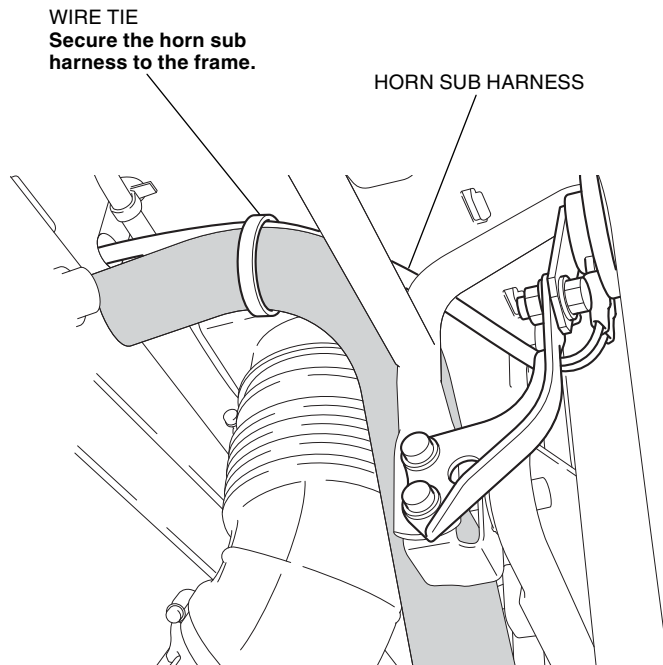
44. Pass the horn sub harness through the front fender as shown.



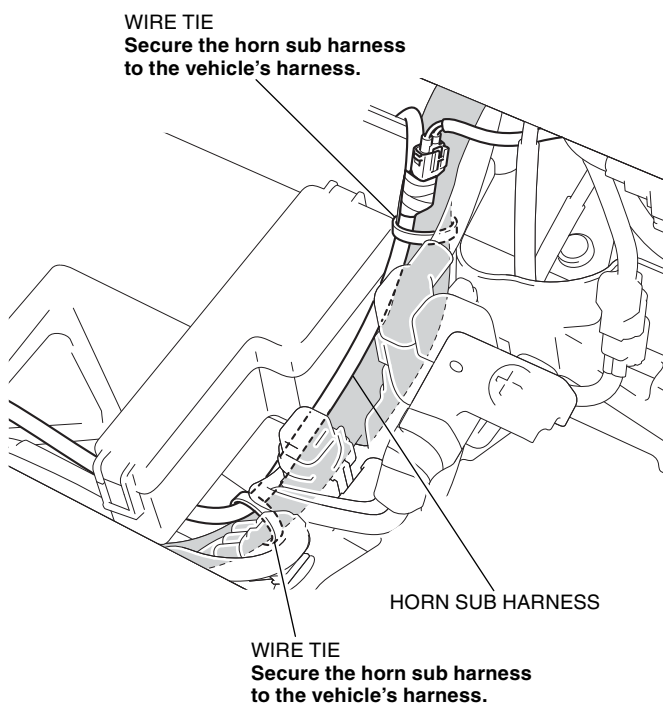
45. Route and connect the horn sub harness as shown.  
<Right side>



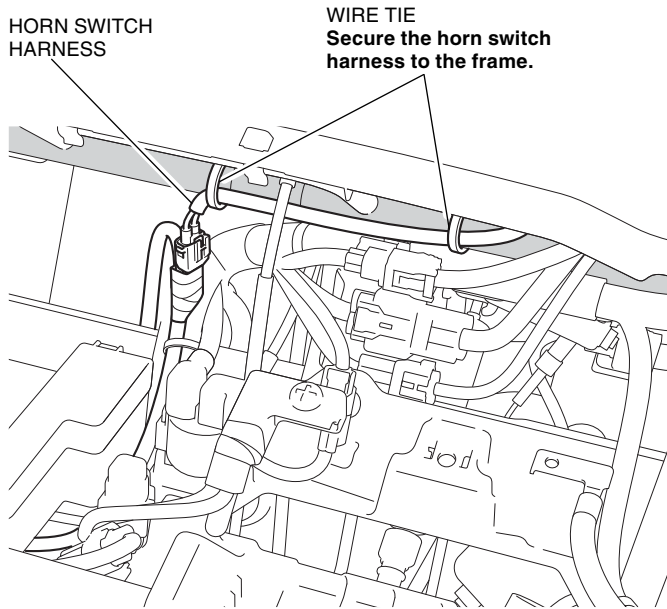
46. Secure the horn sub harness with the wire tie as shown.



47. Secure the horn sub harness with the wire ties as shown.



48. Secure the horn switch harness with the wire ties as shown.



49. Install the removed vehicle parts in the reverse order of removal.

- **Confirm that wire harnesses are not caught or too tight.**

50. Connect the battery negative (-) cable and check each light for function.

51. Check the horn operation.