



INSTALLATION INSTRUCTIONS

Accessory

BACK-UP ALARM MOUNT
P/N 08Z76-HL4-A00

Application

SXS1000M3/M5/M6

Publication No.

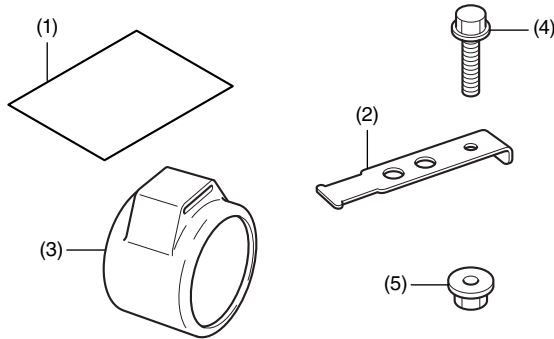
MII 15262

Issue Date

Revised: August 2022

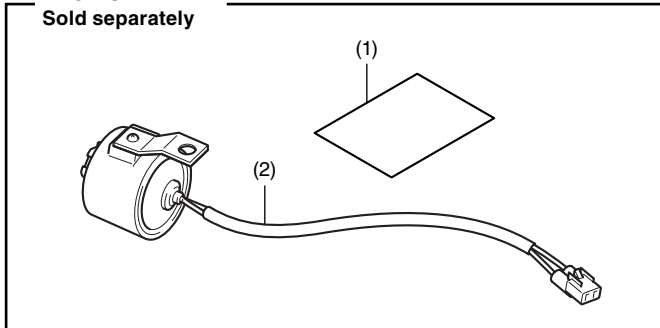
Honda Dealer: Please give a copy of these instructions to your customer.

PARTS LIST



No.	Description	Qty
(1)	Installation Instructions URL	1
(2)	Back-up alarm stay	1
(3)	Suspension	1
(4)	6 mm flange bolt	1
(5)	6 mm flange nut	1

BACK-UP ALARM Sold separately



No.	Description	Qty
(1)	Installation Instructions URL	1
(2)	Back-up alarm buzzer	1

TOOLS REQUIRED

- Socket (10 mm)
- Ratchet
- Box-end wrench (10 mm)
- Phillips ® screwdriver
- Torque wrench

TORQUE CHART

Tighten all screws, bolts, and nuts to their specified torque values. Refer to the Service Manual for the torque values of the removed parts.

Item	N·m	kgf·m	lbf·ft
6 mm flange nut	12	1.2	9

INSTALLATION

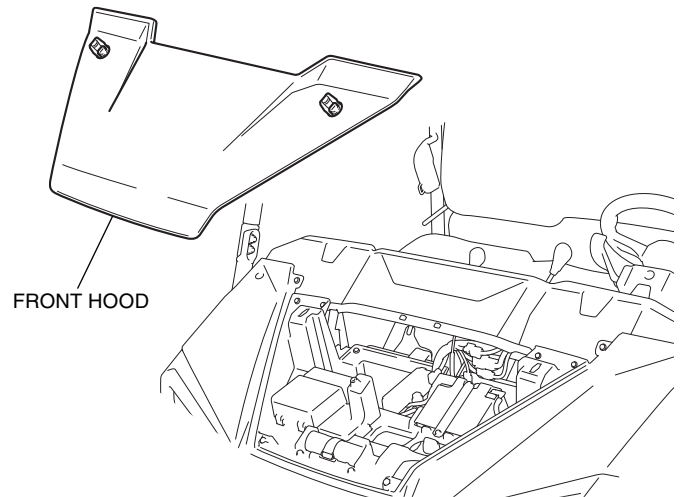
▲ CAUTION

- To prevent burns, allow the engine, exhaust system, radiator, etc., to cool before installing the accessory.

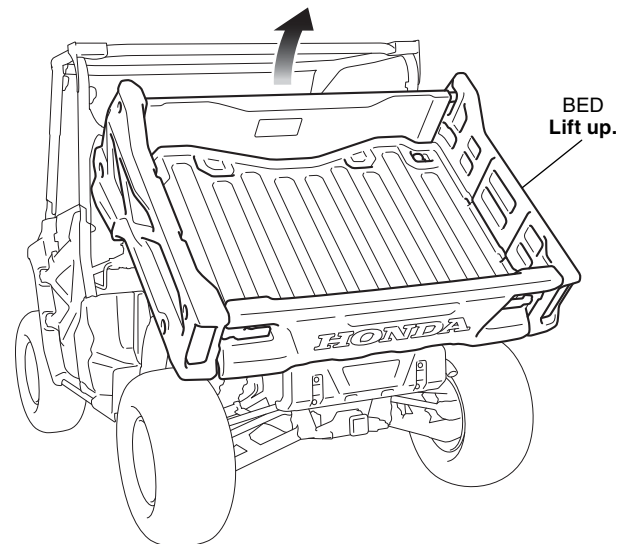
NOTE:

- Disconnect the battery negative (-) cable before installing this accessory.
- The memory of the clock will be erased when you disconnect the battery. Reset the clock after reconnecting the battery.
- Reinstall the removed parts on the vehicle and make sure that the wires and harnesses are not pinched.

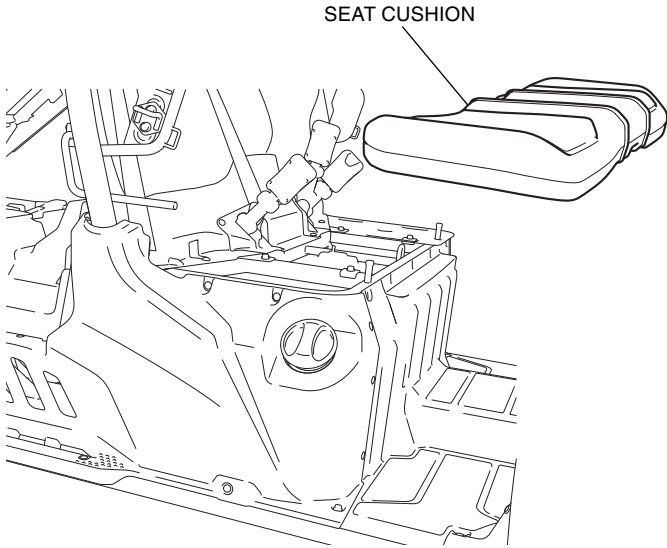
- Remove the front hood, and disconnect the battery negative (-) cable.



- Lift the bed as shown.



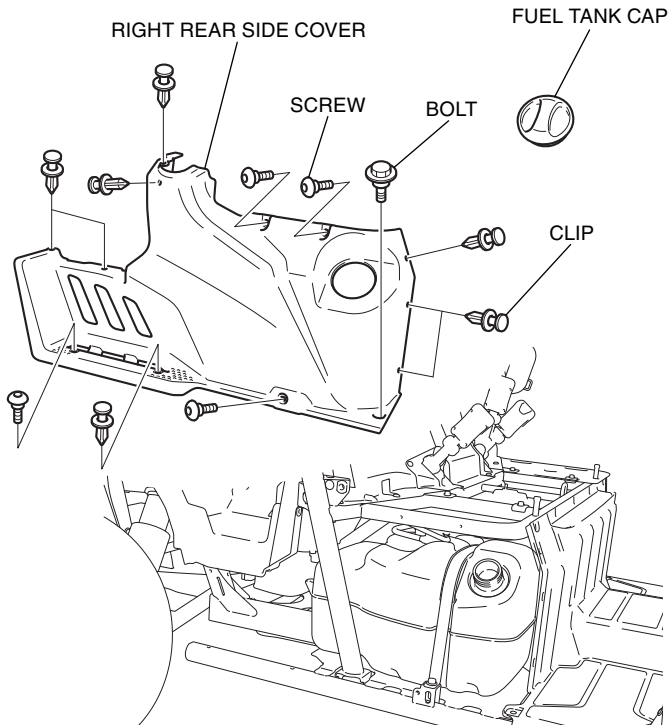
3. Open the right and left of the front door.
4. Remove the seat cushion as shown.



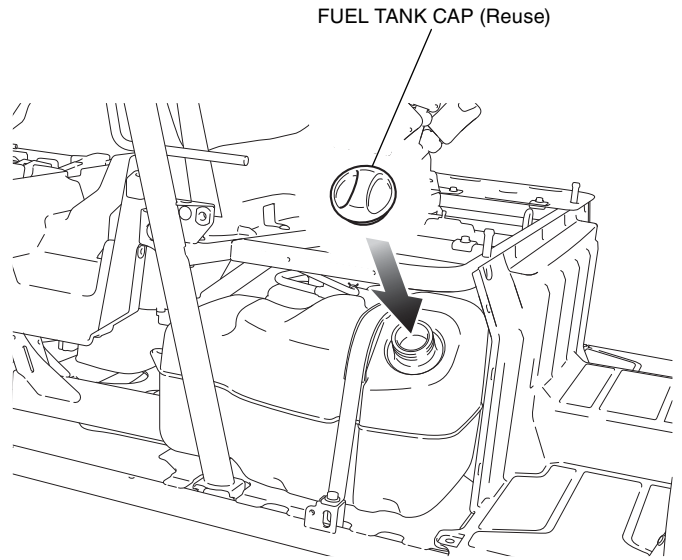
5. Remove the fuel tank cap and right rear side cover as shown.

- Repeat on the left side.

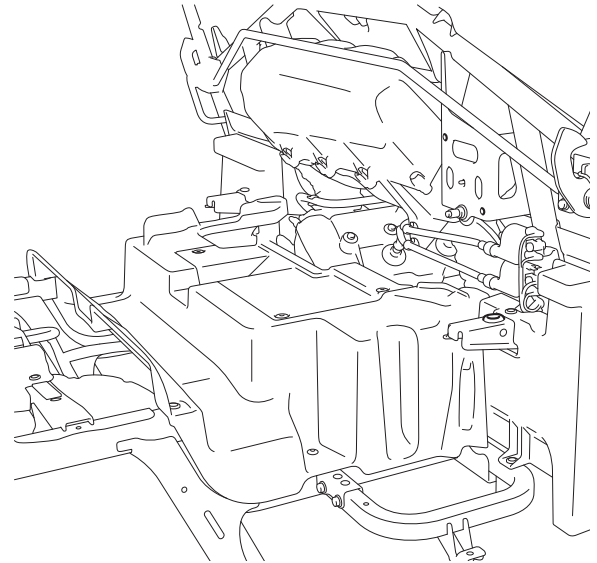
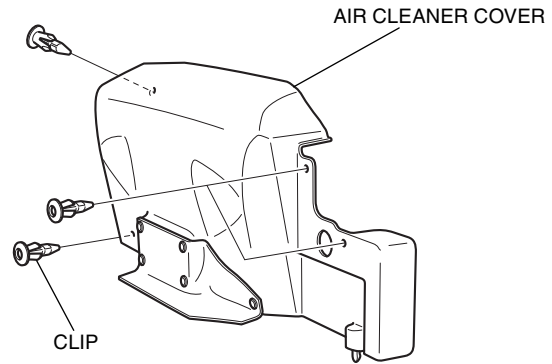
<Right side>



6. Install the fuel tank cap as shown.

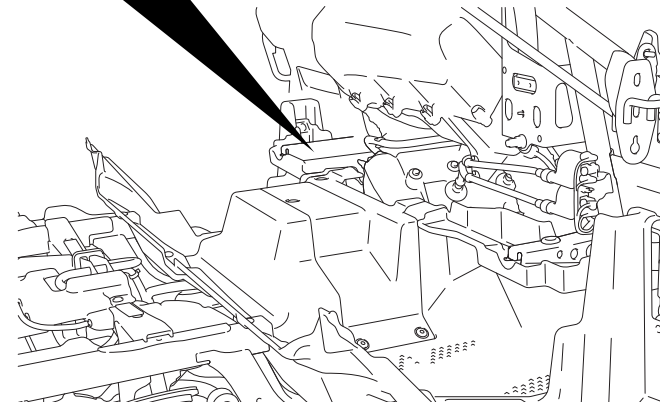
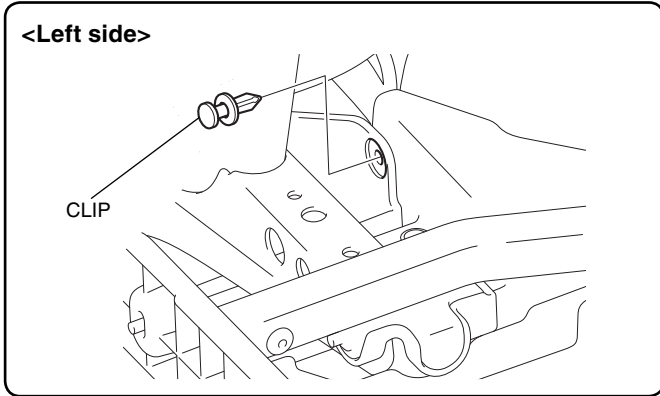


7. Remove the air cleaner cover as shown.



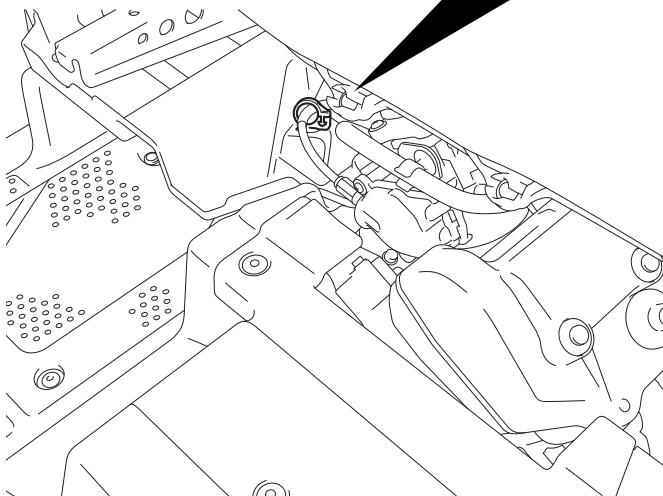
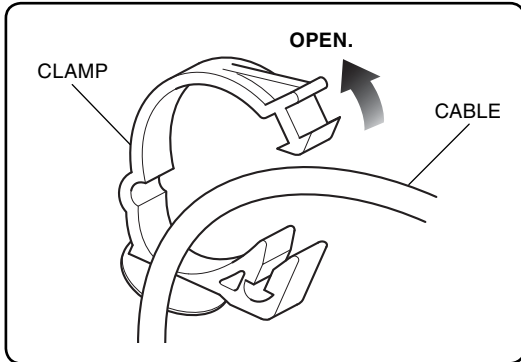
8. Remove the clip as shown.

- Perform this step on **SXS1000M5D** and **SXS1000M5P** model only.



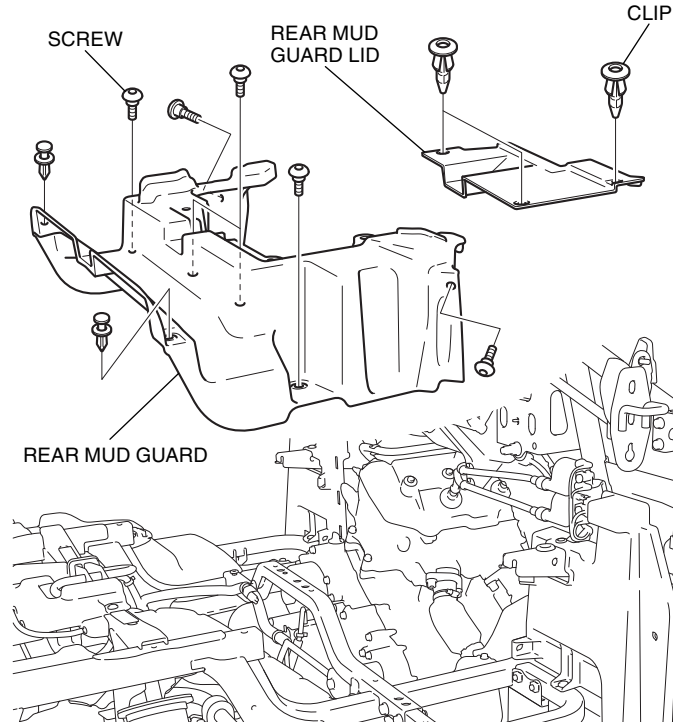
9. Remove the clamp as shown.

- Perform this step on **SXS1000M5D** and **SXS1000M5P** model only.

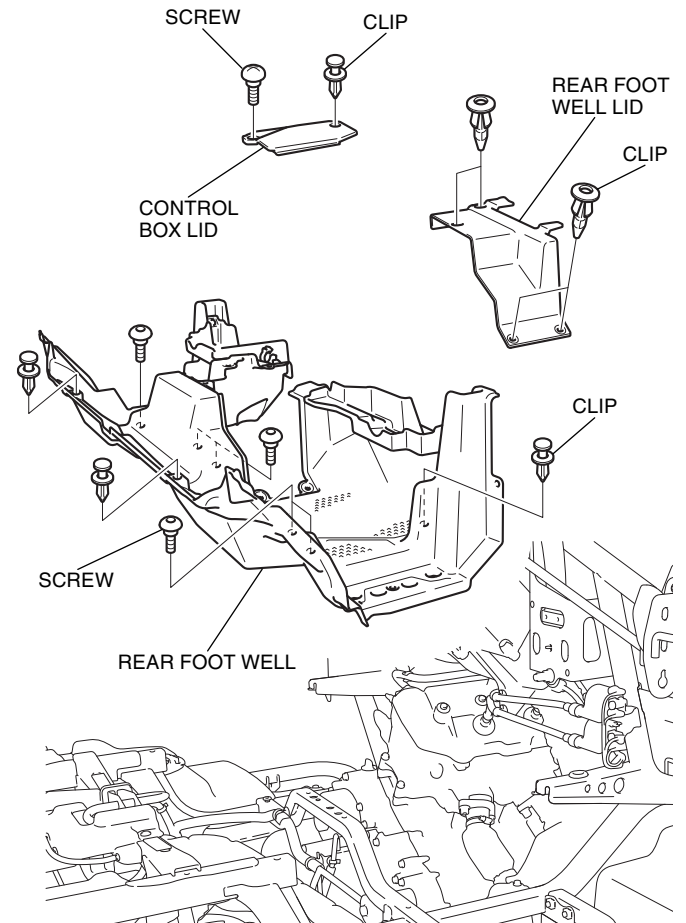


10. Remove the vehicle's parts as shown.

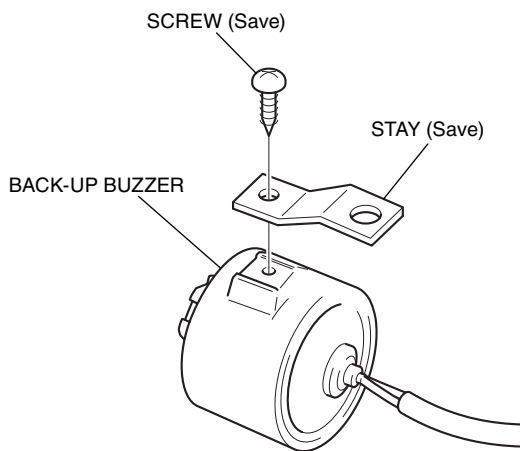
<SXS1000M3/M3P>



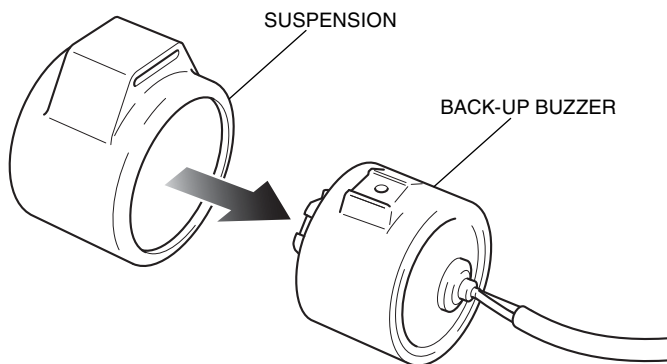
<SXS1000M5D/M5P>



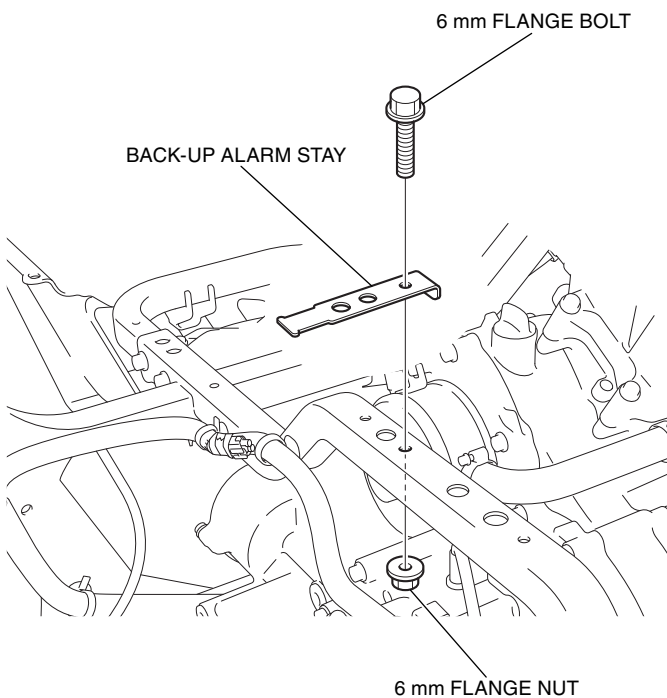
11. Remove the parts as shown.



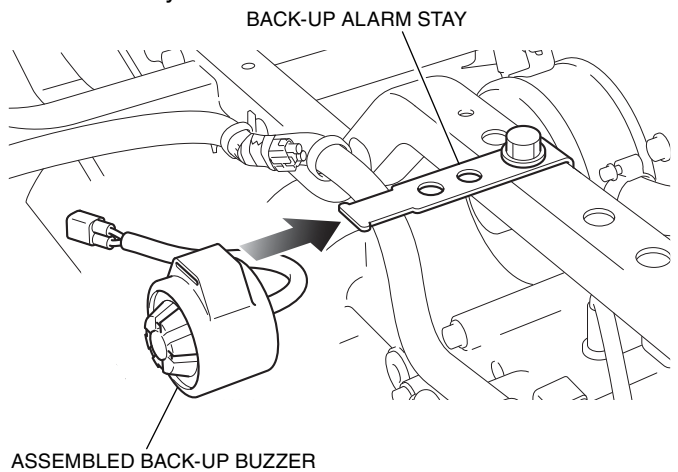
12. Install the suspension on the back-up buzzer as shown.



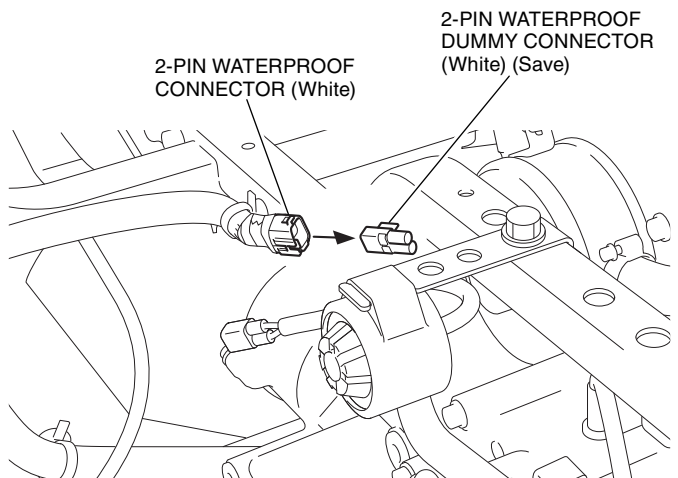
13. Install the back-up alarm stay as shown.



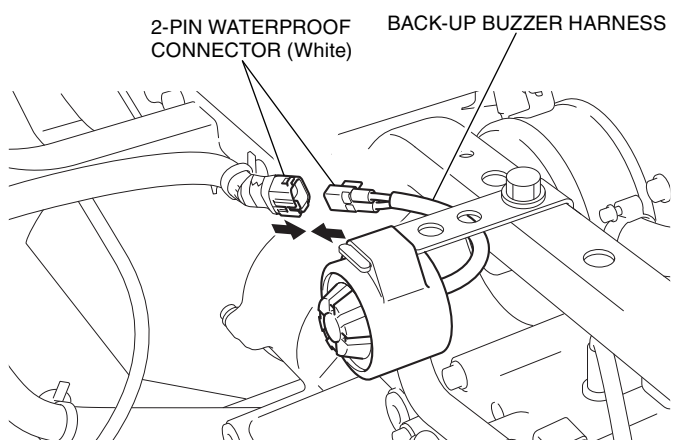
14. Install the assembled back-up buzzer on the back-up alarm stay.



15. Remove the dummy connector as shown.



16. Connect the back-up buzzer harness as shown.



17. Install the vehicle's parts in the reverse order of removal.

- **Confirm that any wire harness is not caught or too tight.**

18. Connect the battery negative (-) cable and check the function of all lights.

19. Shift into reverse gear and confirm that the back up alarm is working.