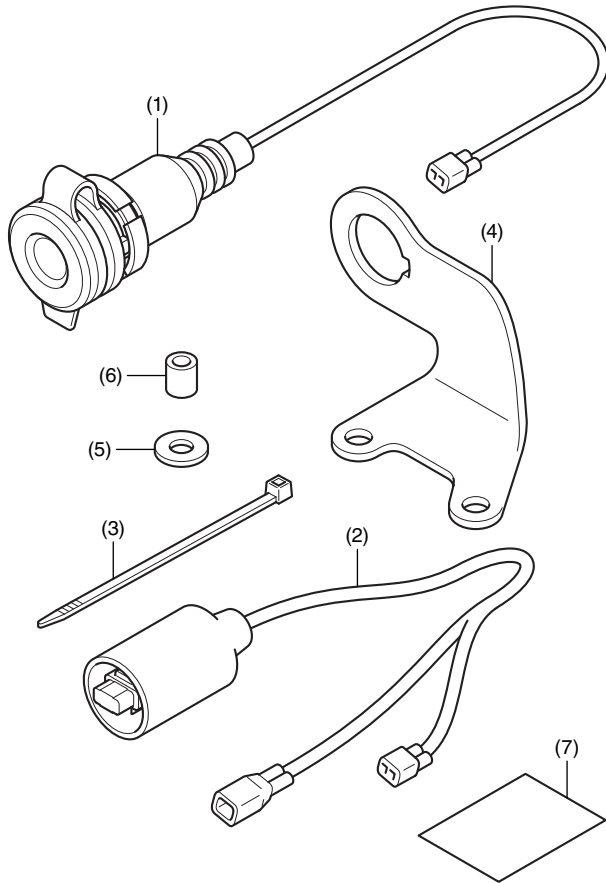


Honda Dealer: Please give a copy of these instructions to your customer.

PARTS LIST



No.	Description	Qty
(1)	Accessory socket	1
(2)	Sub-harness	1
(3)	Wire tie	1
(4)	Socket stay	1
(5)	Washer	2
(6)	Collar	2
(7)	Installation Instructions URL	1

TOOL REQUIRED

Side cutters

TORQUE INFORMATION

Refer to the Service Manual for the torque values of the removed parts.

Please convey the following information to the customer during delivery.

NOTICE:

- **The maximum rated current of the Accessory Socket is 1 Amp. Connecting an accessory that exceeds the rated current will blow the fuse.**

INSTALLATION

▲ CAUTION

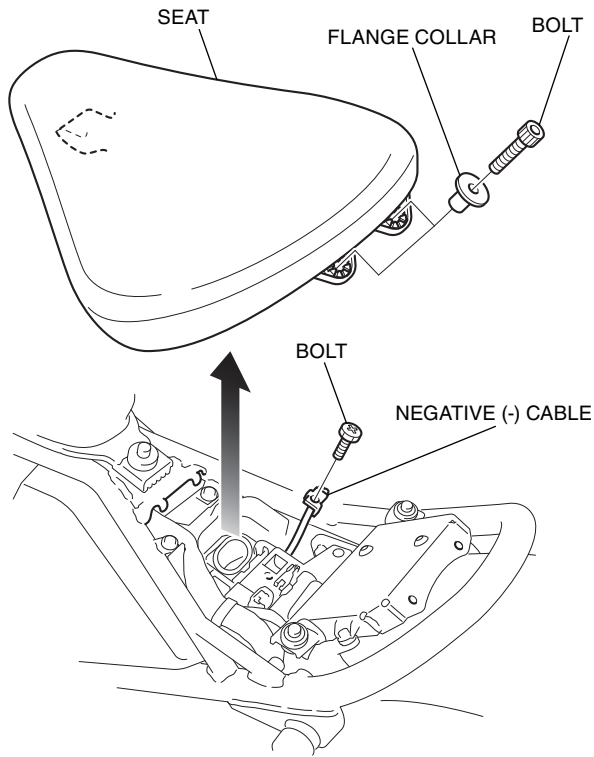
- To prevent burns, allow the engine, exhaust system, radiator, etc. to cool before installing the accessory.

NOTE:

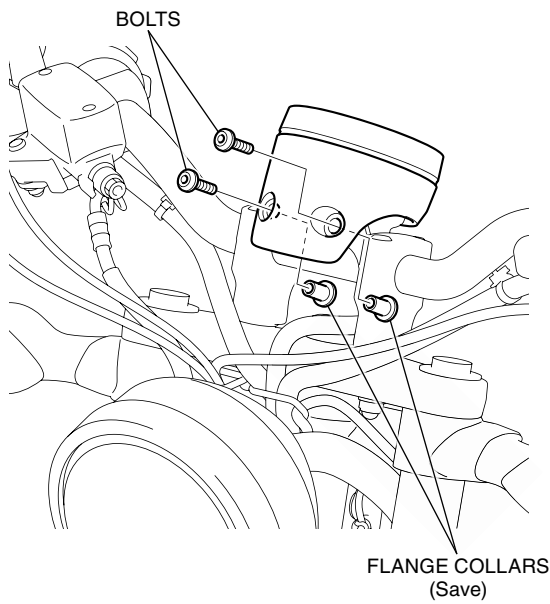
- Take care not to damage the painted surfaces of the motorcycle.
- Reinstall the removed parts on the motorcycle and make sure that wires and harnesses are not pinched.
- Disconnect the negative (-) cable from the battery before installing this accessory.
- The memory of the clock will be erased when you disconnect the battery. After reconnecting the battery, refer to the motorcycle Owner's Manual and reset the clock.
- Trim the excess ends off the wire ties after attaching them to the wire harnesses. Do not allow the cut part of the wire tie to interfere with another harness or brake hose.
- After this accessory installation, check the lights (e.g. right / left turn signal lights and brake lights) for proper operation.

- **Illustration shows CMX300A type, other types are similar.**

1. Refer to the Service Manual for the motorcycle, remove the hardware and seat, and then disconnect the negative (-) cable from the battery as shown.

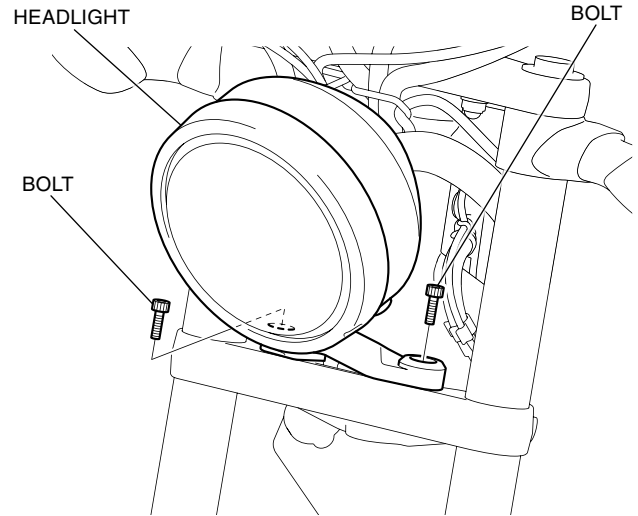


2. Refer to the Service Manual for the motorcycle, remove the bolts and collars as shown.

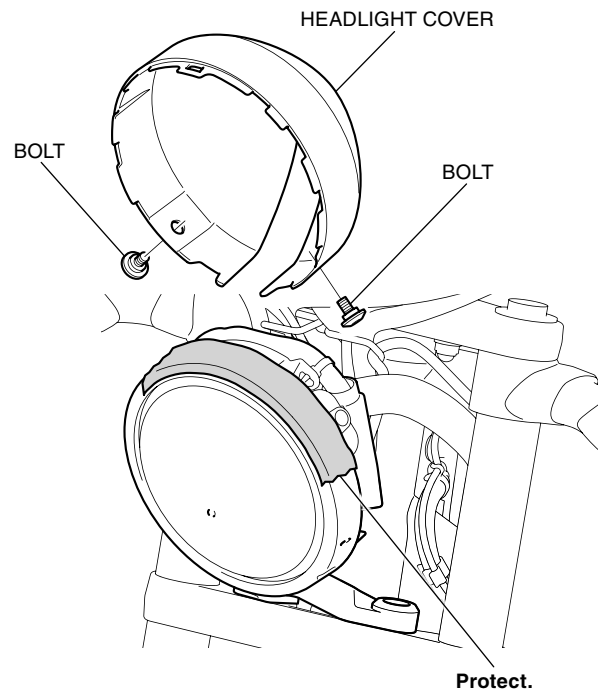


3. Refer to the Service Manual for the motorcycle, remove the headlight mounting bolts.

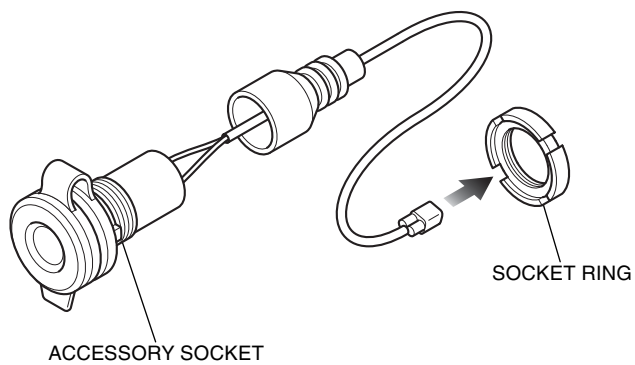
<Meter visor equipped motorcycle only>



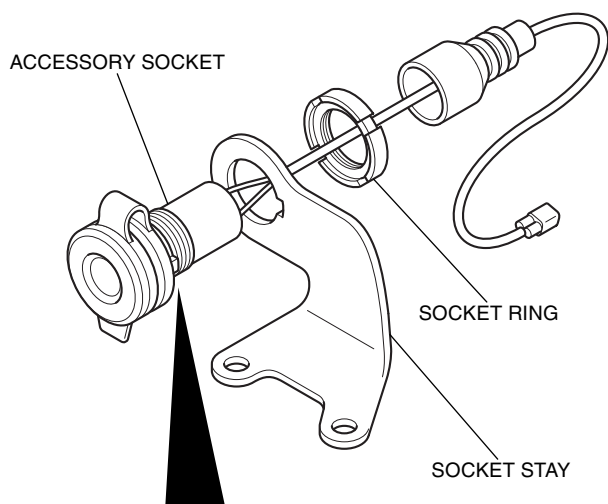
4. Refer to the Service Manual for the motorcycle, remove the bolts and headlight cover as shown.
 - **Be careful not to damage the headlight.**



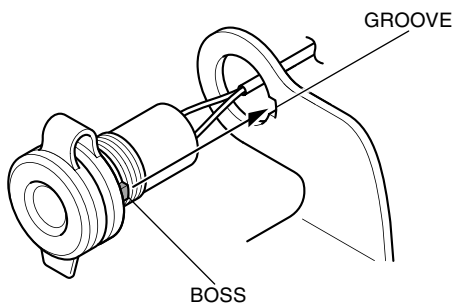
5. Release the socket ring as shown.



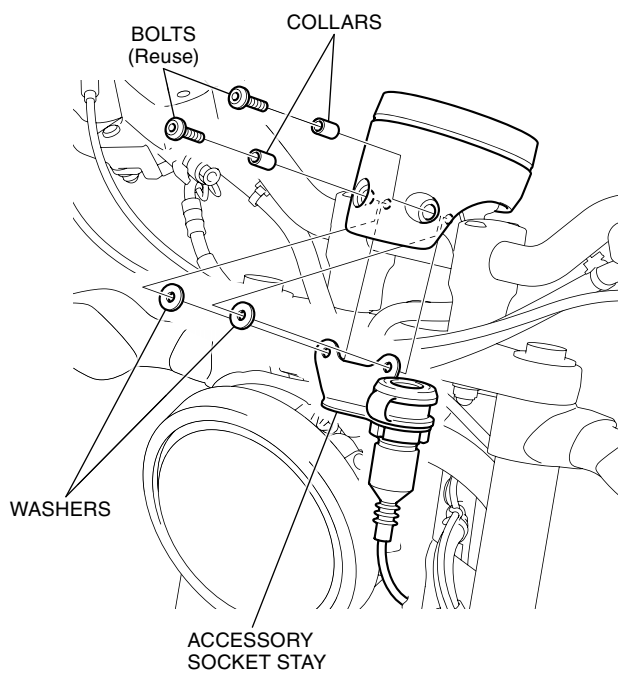
6. Install the socket stay as shown.



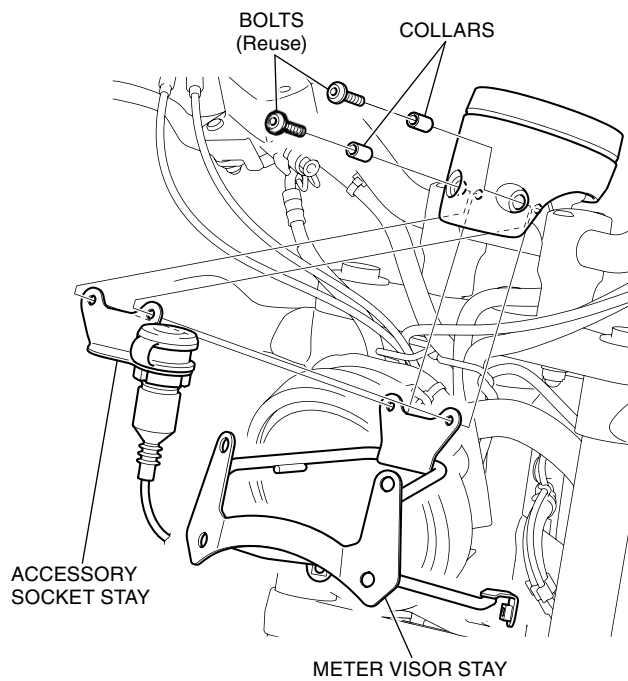
Align the boss with the groove.



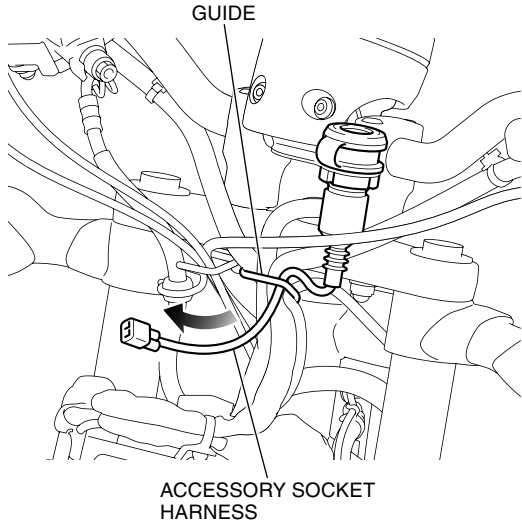
7. Install the accessory socket stay as shown.



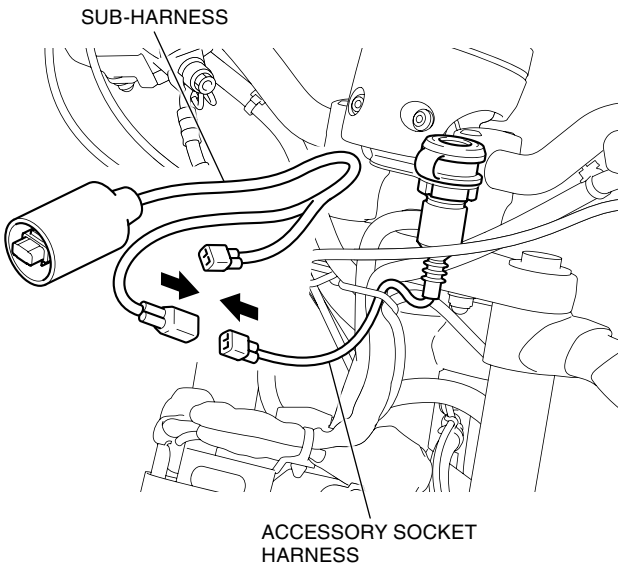
Motorcycle with the Meter Visor and this accessory.



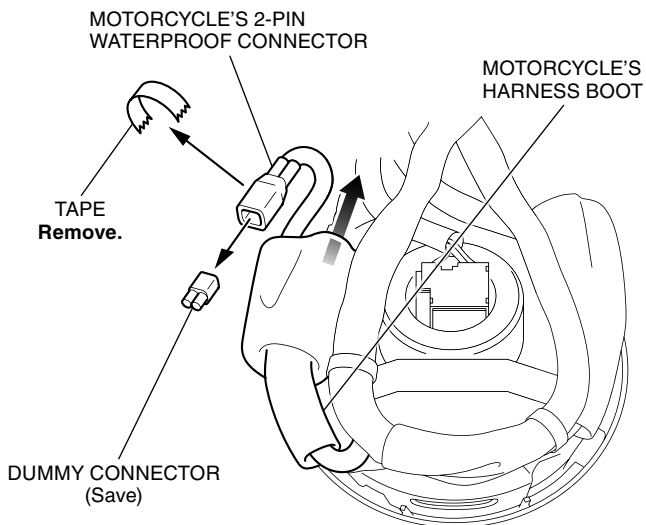
8. Route the accessory socket harness as shown.
- **Move the headlight forward carefully.**



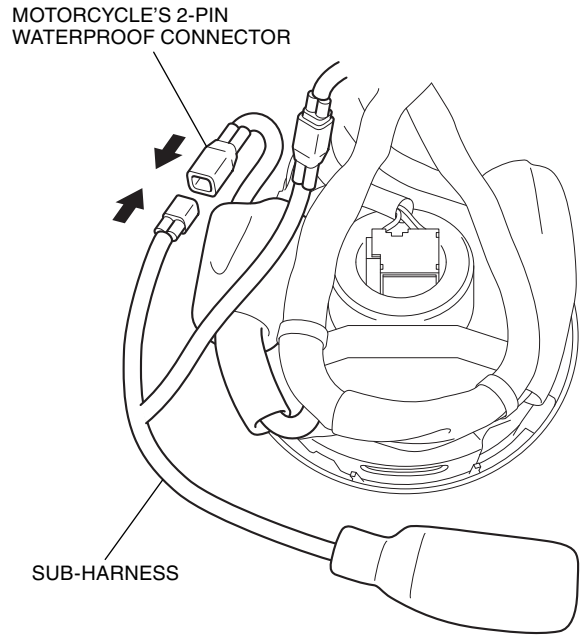
9. Connect the sub-harness as shown.



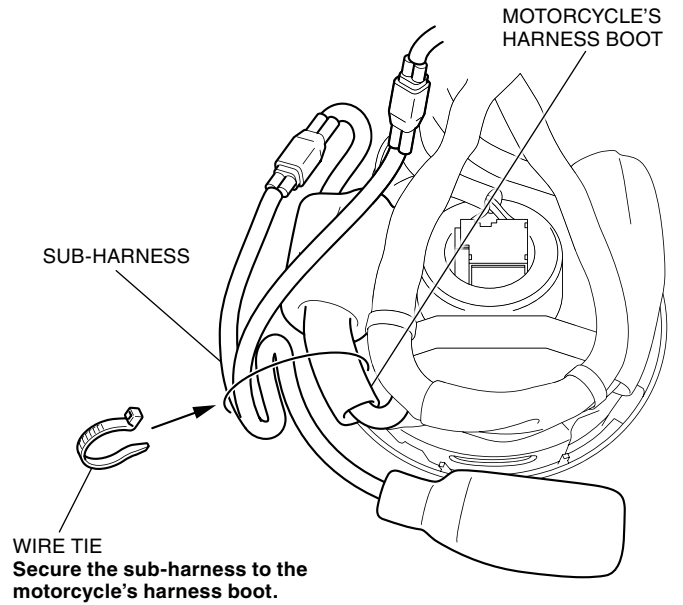
10. Remove the dummy connector as shown.



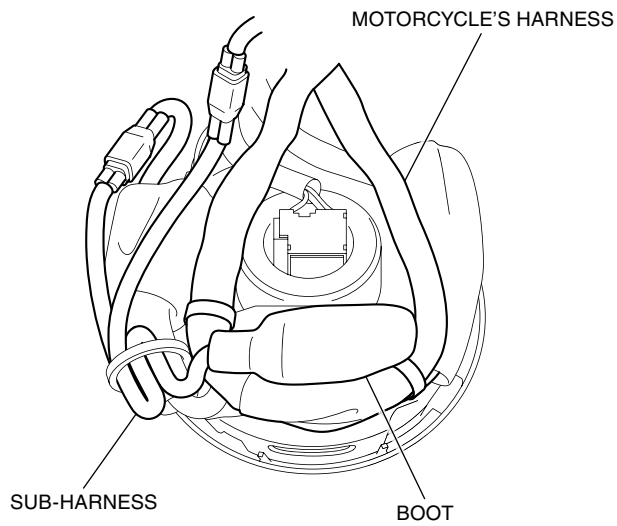
11. Connect the sub-harness as shown.



12. Secure the sub-harness with the wire tie as shown.



13. Set the boot in the position shown.



14. Install the motorcycle's parts in the reverse order of removal.

- **Confirm that the harnesses are not caught or too tight.**