



INSTALLATION INSTRUCTIONS

Accessory

BACKREST
P/N 08R73-K87-A30

Application

After '19
CMX300/A
CMX500/A

Publication No.

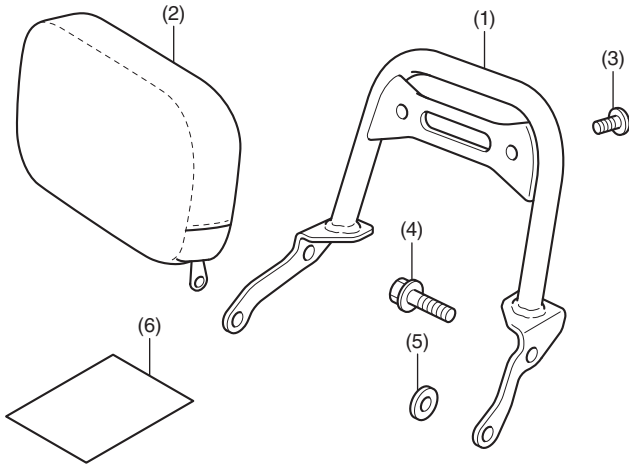
MII 17465

Issue Date

March 2020

Honda Dealer: Please give a copy of these instructions to your customer.

PARTS LIST



No.	Description	Qty
(1)	Backrest	1
(2)	Pad	1
(3)	6 mm socket bolt (6 x 9 mm)	2
(4)	8 mm flange bolt (8 x 20 mm)	2
(5)	8 mm washer	2
(6)	Installation Instruction URL	1

REAR CARRIER Sold separately

- For the installation, refer to the rear carrier Installation Instructions.

TOOLS REQUIRED

- Socket (12 mm)
- Ratchet
- Hex wrench (5 mm)
- Torque wrench

TORQUE INFORMATION

Tighten all screws, bolts, and nuts to their specified torque values. Refer to the Service Manual for the torque values of the removed parts.

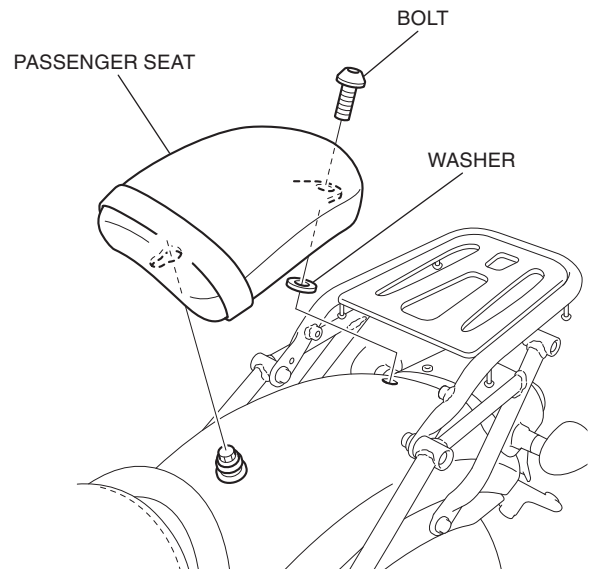
Item	N·m	kgf·m	lbf·ft
6 mm socket bolt	10	1.0	7
8 mm flange bolt and nut	27	2.8	20

INSTALLATION

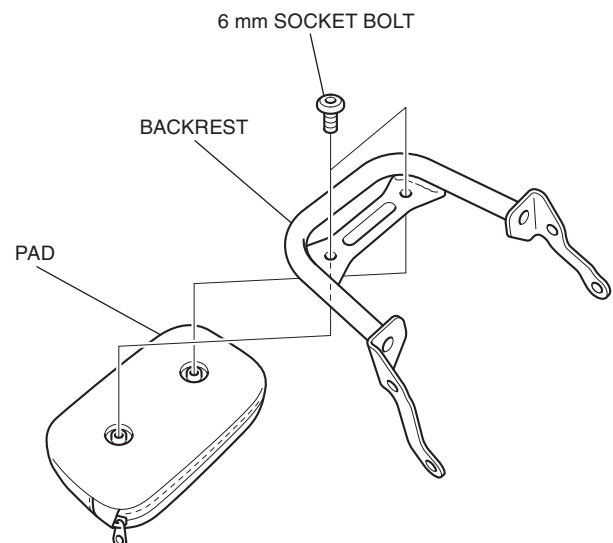
NOTE:

- Take care not to damage the painted surfaces of the motorcycle.
- Save all removed parts unless otherwise indicated.

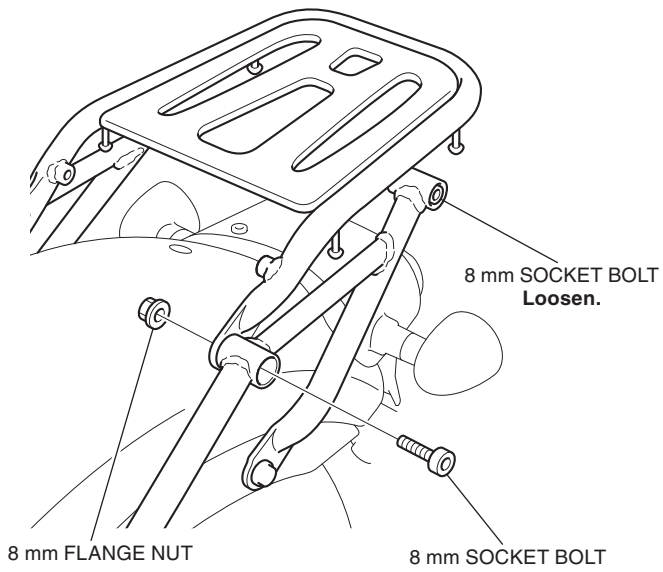
1. Refer to the Service Manual for the motorcycle, remove the motorcycle parts.



2. Assemble the backrest as shown.



3. Refer to the Service Manual for the motorcycle, remove the motorcycle parts.
- **Repeat on the right side.**



4. Install the backrest assembly as shown.
- **Repeat on the right side.**

