

17 **HONDA**  
**INSTALLATION**  
**INSTRUCTIONS**

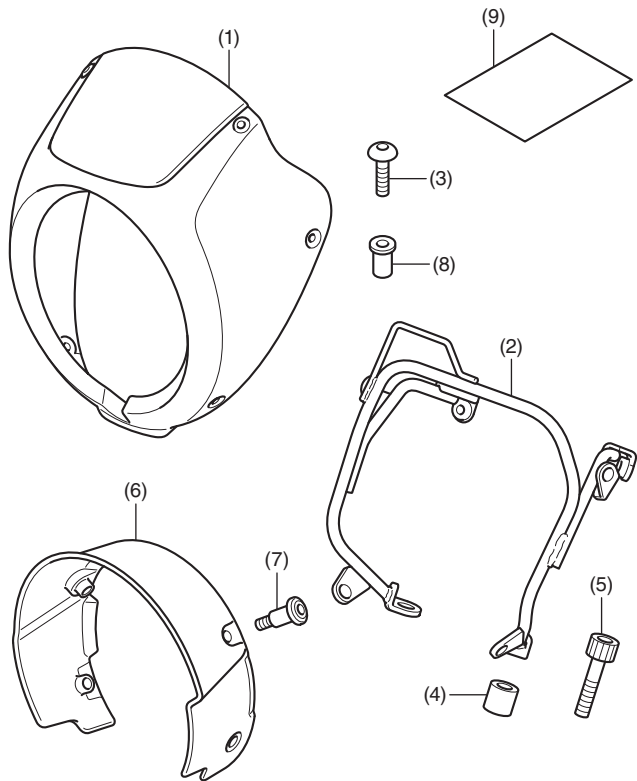
Accessory  
**HEADLIGHT COWL**  
**P/N 08R70-K87-A30**

Application  
**After '19**  
**CMX300/A**  
**CMX500/A**

Publication No.  
**MII 17465**  
 Issue Date  
**March 2020**

**Honda Dealer: Please give a copy of these instructions to your customer.**

**PARTS LIST**



No.	Description	Qty
(1)	Headlight cowl	1
(2)	Stay	1
(3)	5 mm socket bolt (5 x 16 mm) (short)	4
(4)	Collar	2
(5)	8 mm socket bolt (8 x 40 mm)	2
(6)	Headlight cowl cover	1
(7)	5 mm socket bolt (5 x 19 mm) (long)	4
(8)	5 mm well nut	4
(9)	Installation Instruction URL	1

**TOOLS REQUIRED**

Hex wrench (5 and 6 mm)  
 Torque wrench

**TORQUE INFORMATION**

Tighten all screws, bolts, and nuts to their specified torque values. Refer to the Service Manual for the torque values of the removed parts.

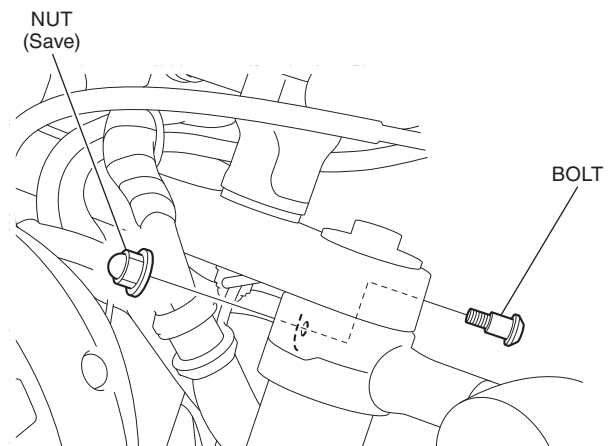
Item	N·m	kgf·m	lbf·ft
5 mm socket bolt	1.0	0.1	0.7
8 mm socket bolt	22	2.2	16

**INSTALLATION**

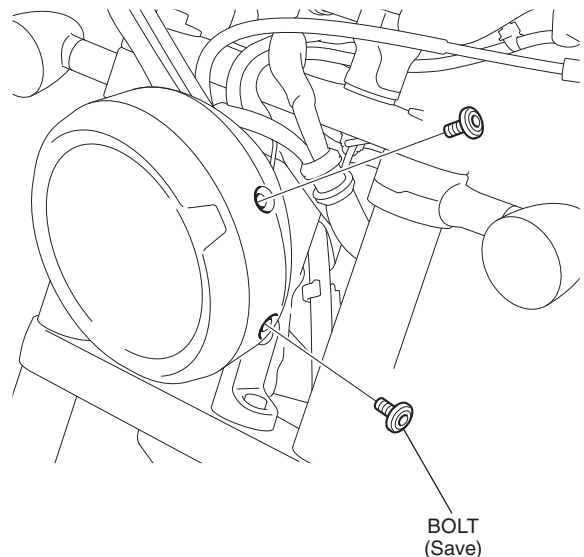
**NOTE:**

- Take care not to damage the painted surfaces of the motorcycle.
- Reinstall the removed parts on the motorcycle and make sure that wires and harnesses are not pinched.

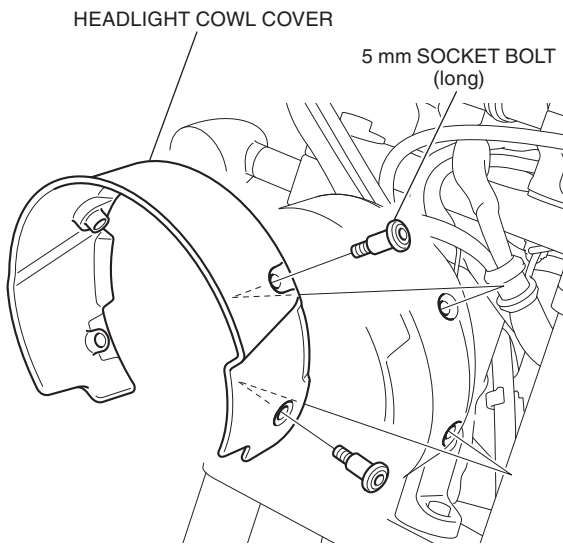
1. Refer to the Service Manual for the motorcycle, remove the motorcycle parts.
  - Repeat on the right side.



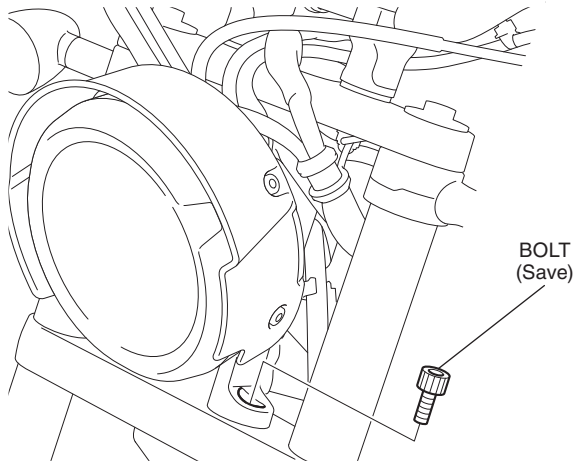
2. Refer to the Service Manual for the motorcycle, remove the motorcycle parts.
  - Repeat on the right side.



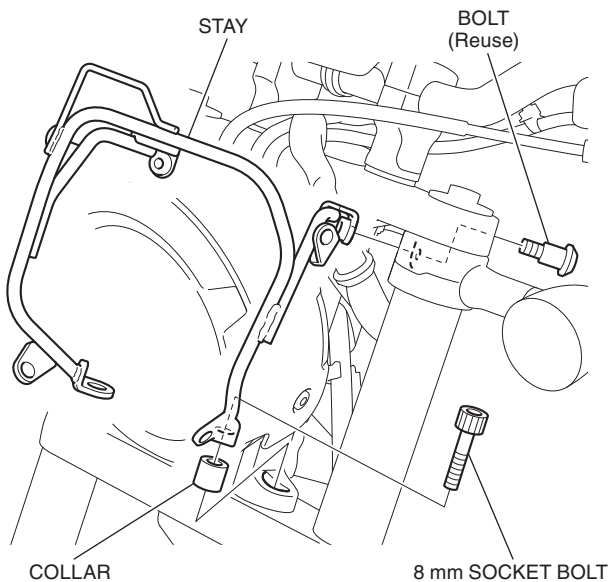
3. Install the headlight cowl cover as shown.
  - Repeat on the right side.



4. Refer to the Service Manual for the motorcycle, remove the motorcycle parts.
  - Repeat on the right side.

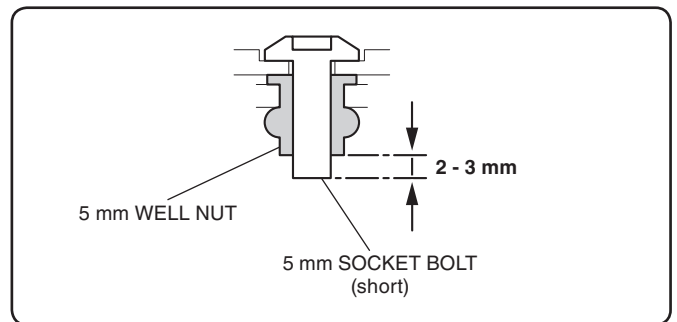
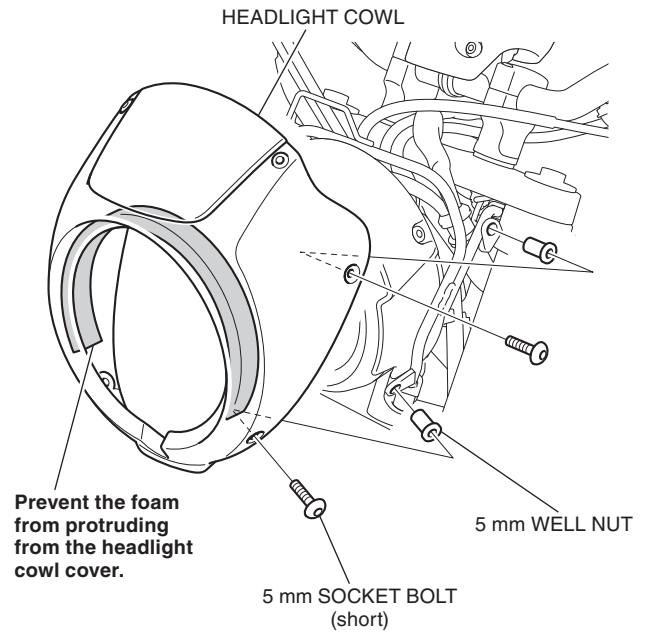


5. Loosely install the stay as shown.
  - Repeat on the right side.



6. Tighten all loose bolts to their specified torque values.

7. Install the headlight cowl as shown.
  - Repeat on the right side.



8. Move the handlebar right and left, and check that this accessory does not interfere with the motorcycle parts.