

HONDA

INSTALLATION INSTRUCTIONS

Accessory

**FRONT BUMPER
P/N 08P71-HL8-A10**

Application

SXS1000M6

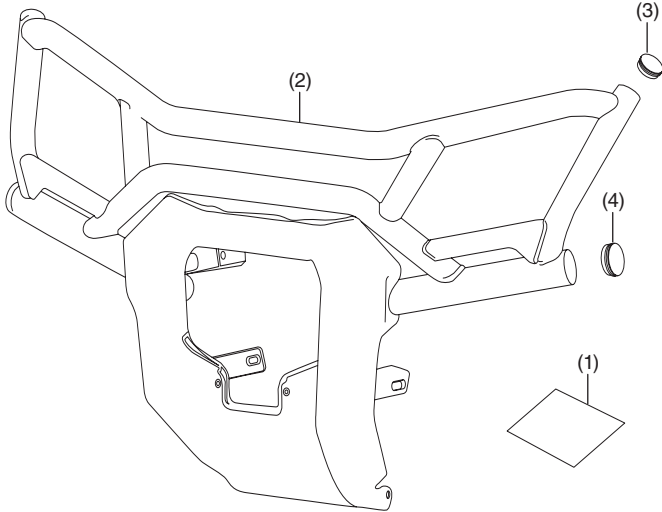
Publication No.

MII 17844

Issue Date

August 2022

PARTS LIST



No.	Description	Qty
(1)	Installation Instruction URL	1
(2)	Front bumper	1
(3)	1-3/4" Cap	2
(4)	2-1/4" Cap	2

TORQUE CHART

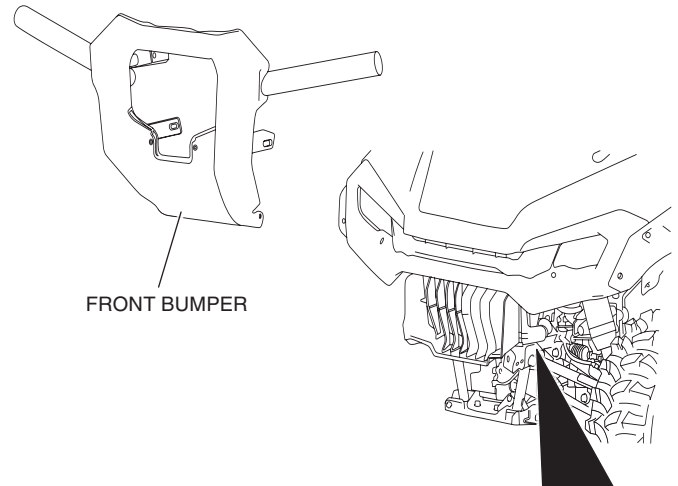
Tighten all screws, bolts, and nuts to their specified torque values.

Item	N·m	kgf·m	lbf·ft
8 × 65 mm flange bolt	37	3.7	27
10 × 25 mm flange bolt	34	3.4	25
10 × 60 mm flange bolt	39	3.9	29

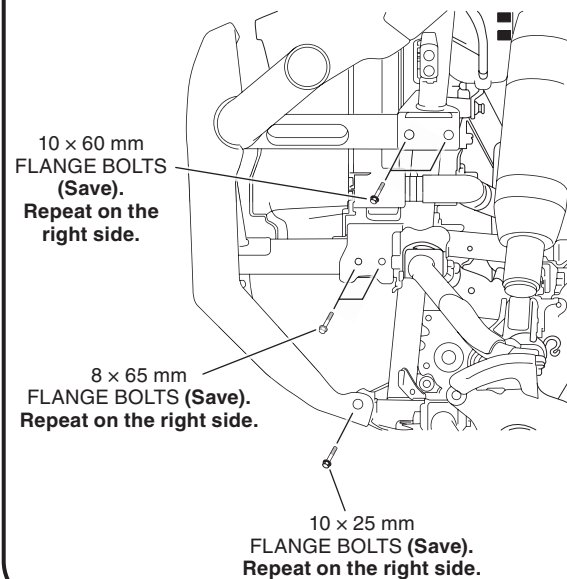
INSTALLATION

⚠ CAUTION: To prevent burns, allow the engine, exhaust system, radiator, etc., to cool before installing the accessory.

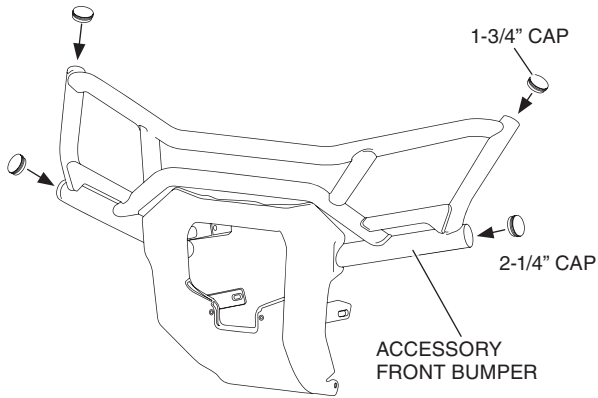
1. Remove the front bumper as shown.



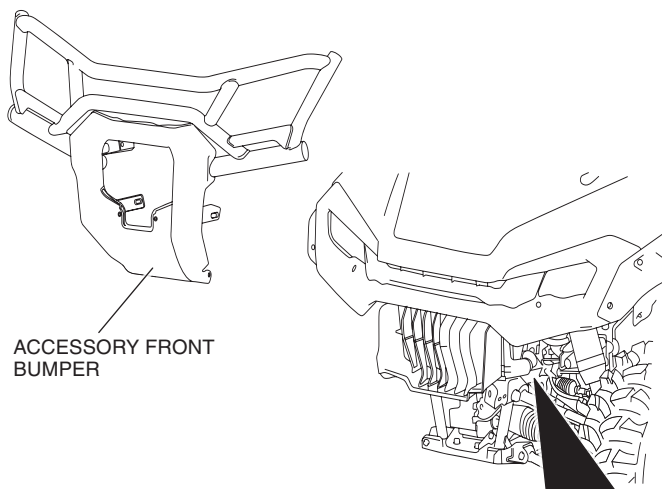
Remove the bolts as shown.



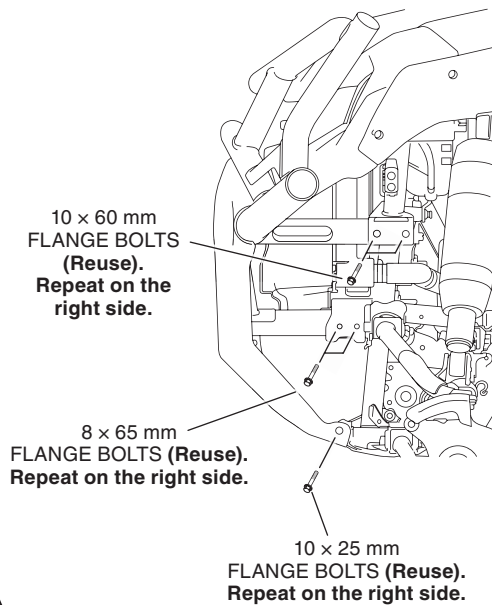
2. Install the caps as shown.



3. Loosely install the accessory front bumper as shown.



Loosely install the bolts as shown.



4. Tighten the loosely installed hardware to the values specified in the Torque Chart.