



# INSTALLATION INSTRUCTIONS

Accessory

A-ARM GUARD (FRONT)  
P/N 08P70-HL5-A00

Application

SXS500M2

Publication No.

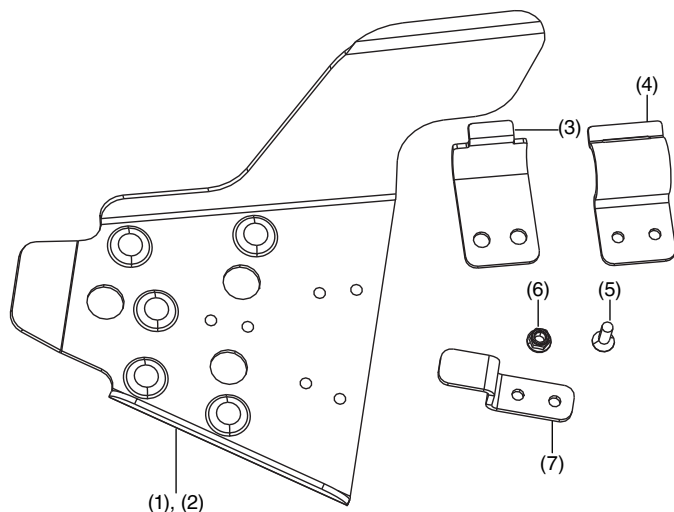
MII 14948

Issue Date

June 2014

**Honda Dealer: Please give a copy of these instructions to your customer.**

## PARTS LIST



No.	Description	Qty
(1)	Front right A-arm guard	1
(2)	Front left A-arm guard	1
(3)	Tabbed bracket	4
(4)	Slotted bracket	4
(5)	6 x 20 mm flat head screw	12
(6)	6 mm U nut	12
(7)	Outer bracket	2

## TOOLS AND SUPPLIES REQUIRED

Torque Wrench

10 mm Socket

Phillips Screwdriver

Ratchet

## TORQUE CHART

Tighten all screws, bolts, and nuts to their specified torque values. Refer to the Service Manual for the torque values of the removed parts

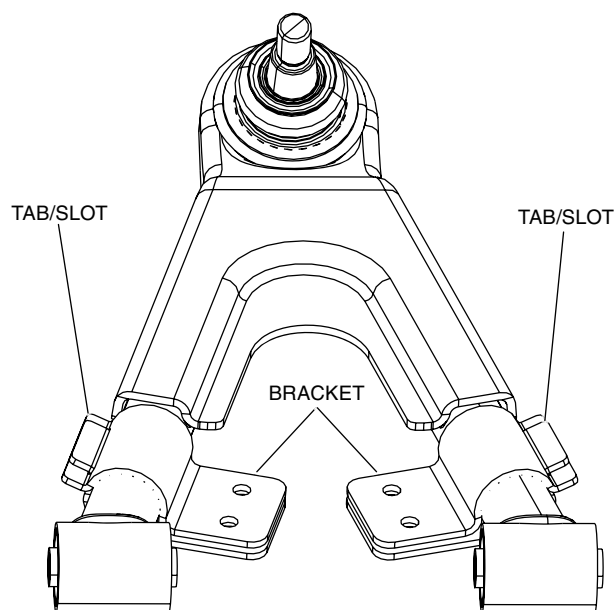
Item	N·m	kgf·m	lbf·ft
6 mm U Nut	10	1	7

## USE AND CARE INFORMATION

Check the accessory mounts frequently and retighten if necessary

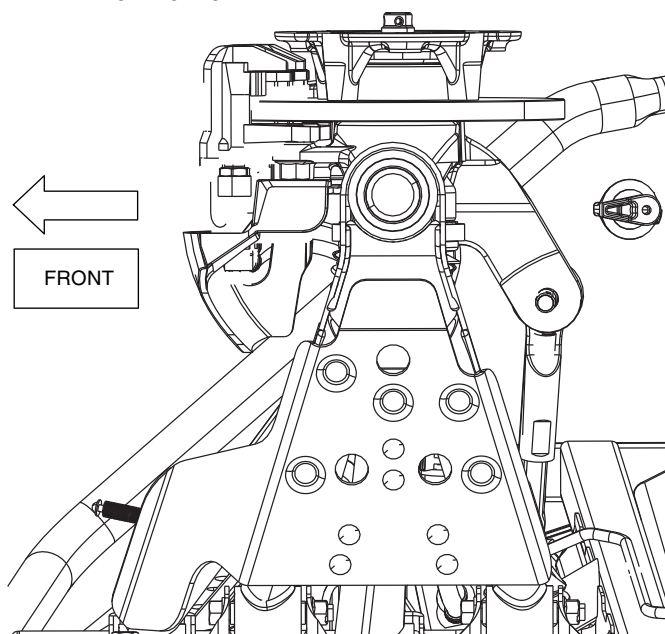
## INSTALLATION

1. Place tab of the tabbed bracket through the slot in slotted bracket and assemble the brackets around the A-arm tubes as shown.

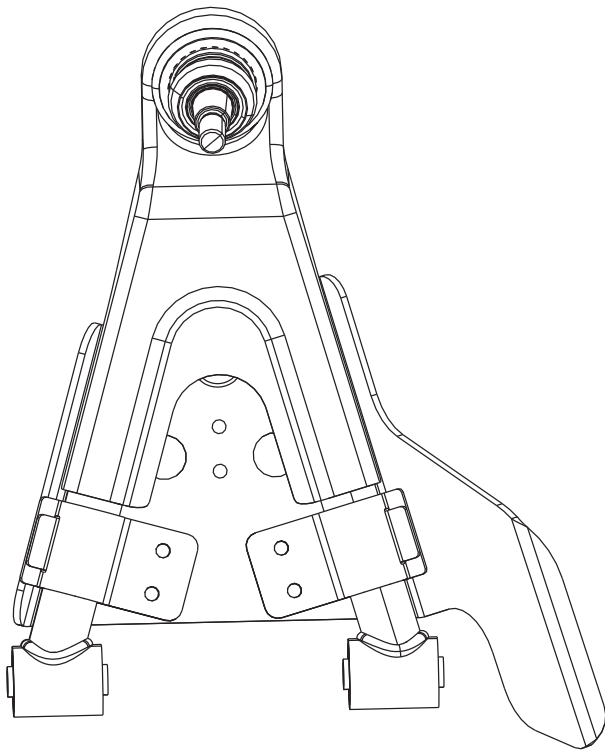


2. Place the A-arm guard along the front left A-Arm as shown.

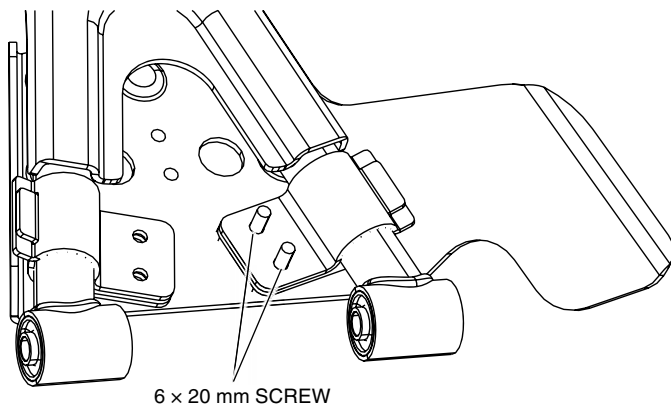
<VIEW FROM BOTTOM>



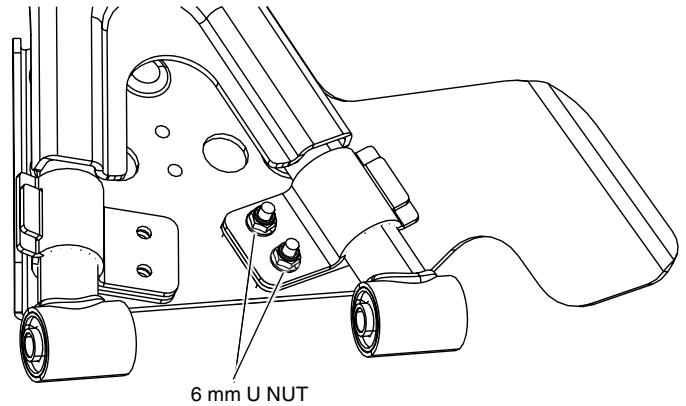
<VIEW FROM TOP>



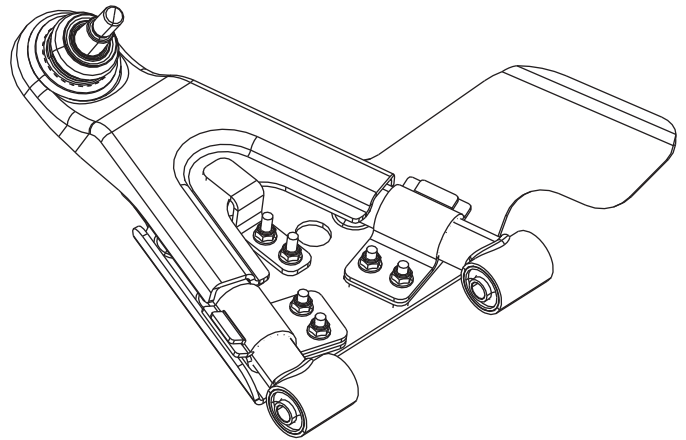
3. Pass two screws through the countersunk holes in the guard and assembled bracket as shown.



4. Thread a U-nut onto each screw and tighten until bracket loosely contacts the guard.



5. Repeat steps 2 through 4 for the remaining brackets.
6. Once all the brackets are loosely attached, align the position of the guard as shown.  
Tighten the nuts to the value specified in the Torque Chart.



7. Repeat steps 1 through 6 for installing the guard on the right A-arm.