

INSTALLATION INSTRUCTIONS

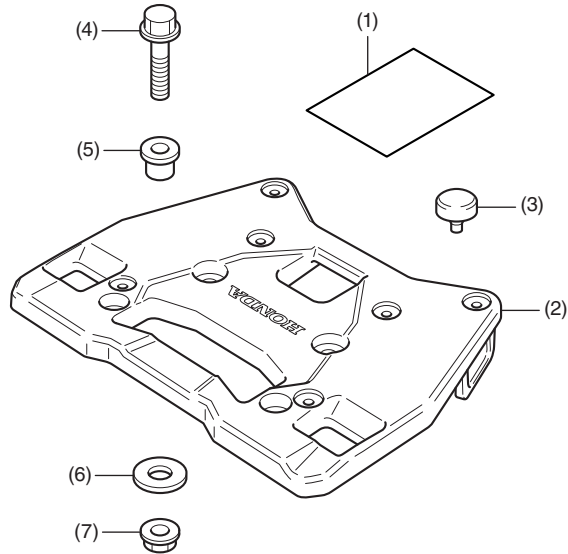
Accessory	Application	Publication No.
TOP CASE MOUNT P/N 08L78-MKS-E00	CRF1100A/A4/D/D4	MII 17351
		Issue Date
		February 2020

Accessory	Application	Publication No.
TOP CASE MOUNT P/N 08L78-MKS-E00	CRF1100A/A4/D/D4	MII 17351
		Issue Date
		February 2020

Accessory	Application	Publication No.
TOP CASE MOUNT P/N 08L78-MKS-E00	CRF1100A/A4/D/D4	MII 17351
		Issue Date
		February 2020

Honda Dealer: Please give a copy of these instructions to your customer.

PARTS LIST

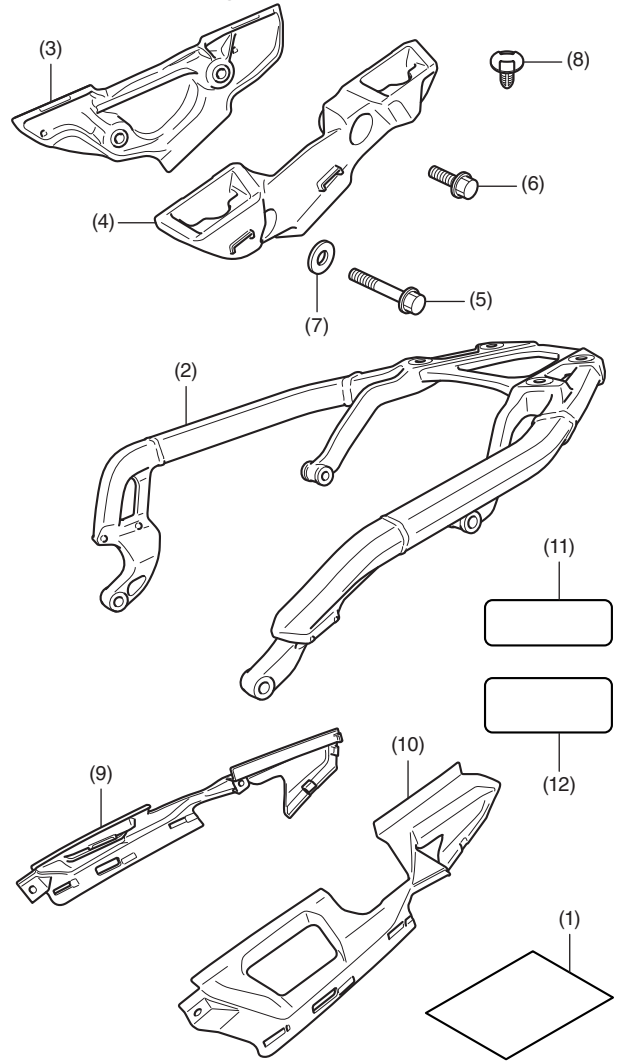


No.	Description	Qty
(1)	Installation Instruction URL	1
(2)	Carrier base	1
(3)	Cushion	6
(4)	8 mm flange bolt	4
(5)	Flange collar	4
(6)	Washer	4
(7)	8 mm flange nut	4

REAR CARRIER

Sold separately

<CRF1100A/D only>



For installation, refer to the Installation Instructions of accessory.

No.	Description	Qty
(1)	Installation Instruction URL	1
(2)	Rear carrier	1
(3)	Right pannier bracket	1
(4)	Left pannier bracket	1
(5)	8 mm flange bolt	4
(6)	8 mm bolt	2
(7)	Washer	4
(8)	Clip	4
(9)	Right pannier bracket cover	1
(10)	Left pannier bracket cover	1
(11)	Label (MKK-D00)	1
(12)	Label (MFG-900)	1

TOOLS REQUIRED

Socket (12 mm)

Ratchet

Box-end wrench (12 mm)

Torque wrench

TORQUE CHART

Tighten all screws, bolts, and nuts to their specified torque values. Refer to the Service Manual for the torque values of the removed parts.

Item	N·m	kgf·m	lbf·ft
8 mm flange nut	27	2.8	20

MAXIMUM LOADING CAPACITY

- The weight of the cargo must not exceed the following maximum loading capacity:

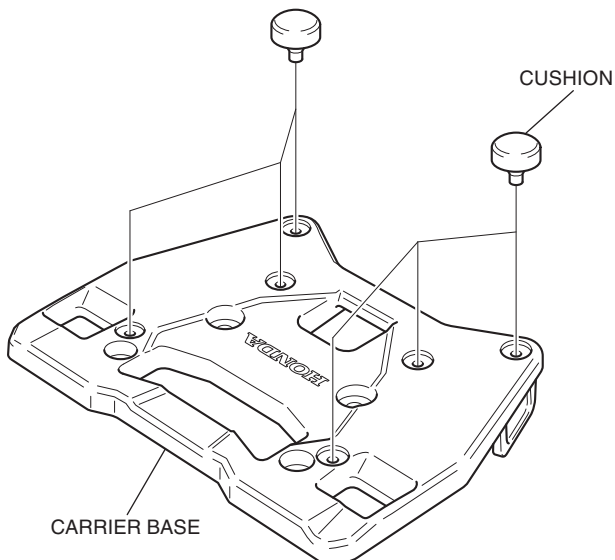
Maximum Loading Capacity	
Top box	13.2 lb (6.0 kg)

INSTALLATION

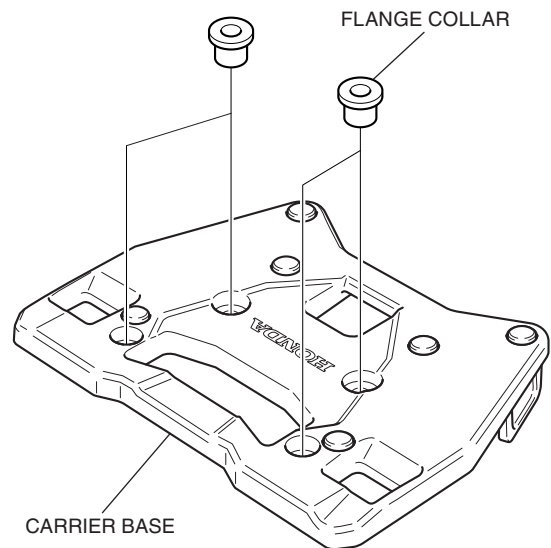
▲ CAUTION

- To prevent burns, allow the engine, exhaust system, radiator, etc., to cool before installing the accessory.

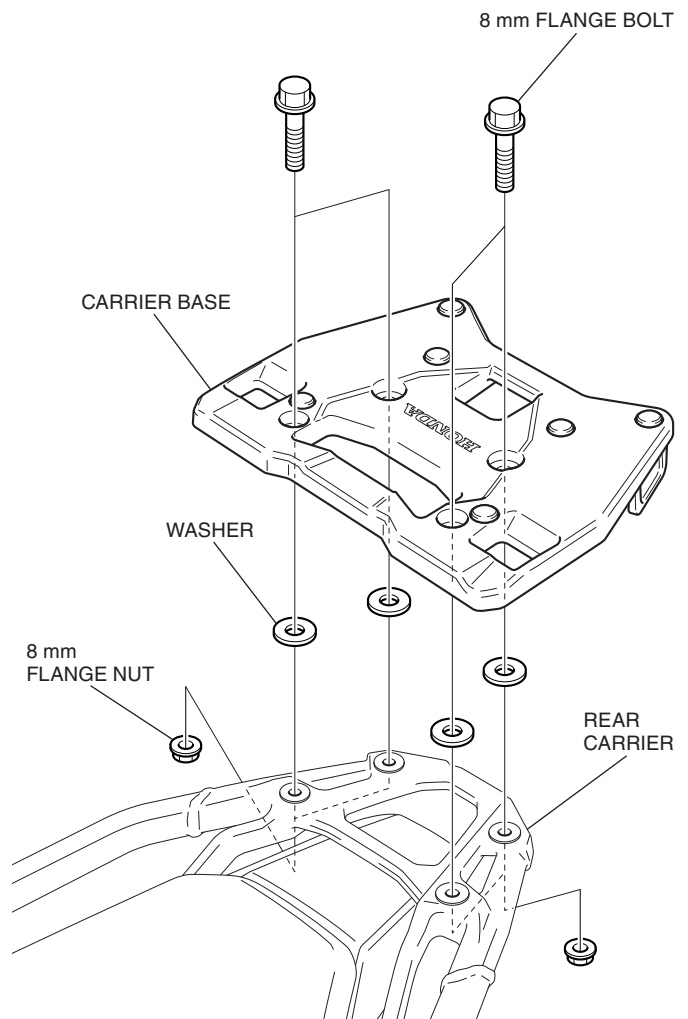
- Install the rear carrier (sold separately).
 - Perform this step CRF1100A/D only.
- Install the cushions as shown.



- Install the flange collars as shown.



- Install the carrier base as shown.



- Refer to the Genuine Accessory User's Guide that comes together with the top case, and install the top case according to the instruction.