

HONDA

INSTALLATION INSTRUCTIONS

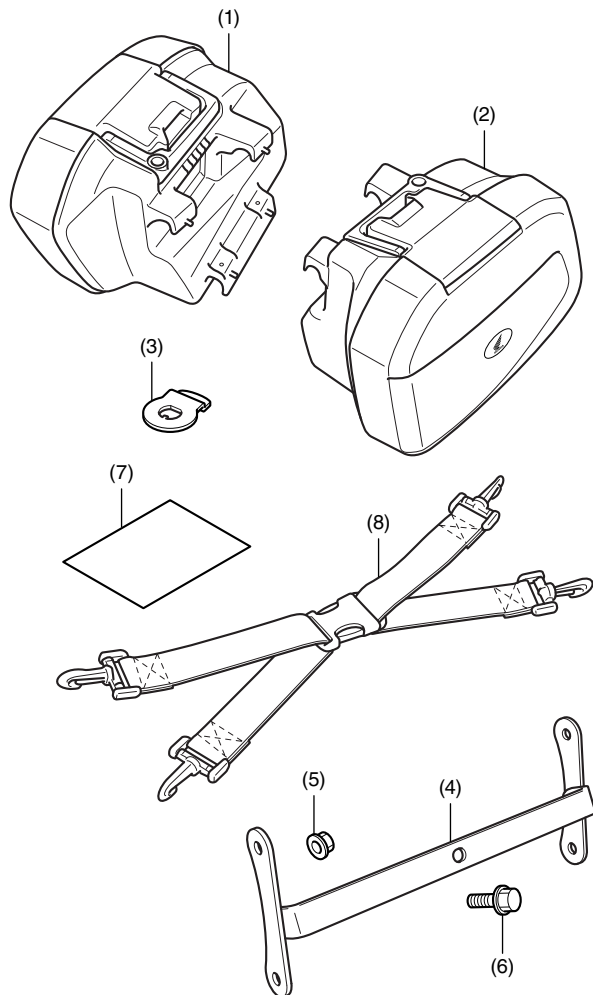
Accessory
PANNIERS
P/N 08L70-MGZ-A80

Application
CB500X/XA

Publication No.
MII 17166
Issue Date
May 2019

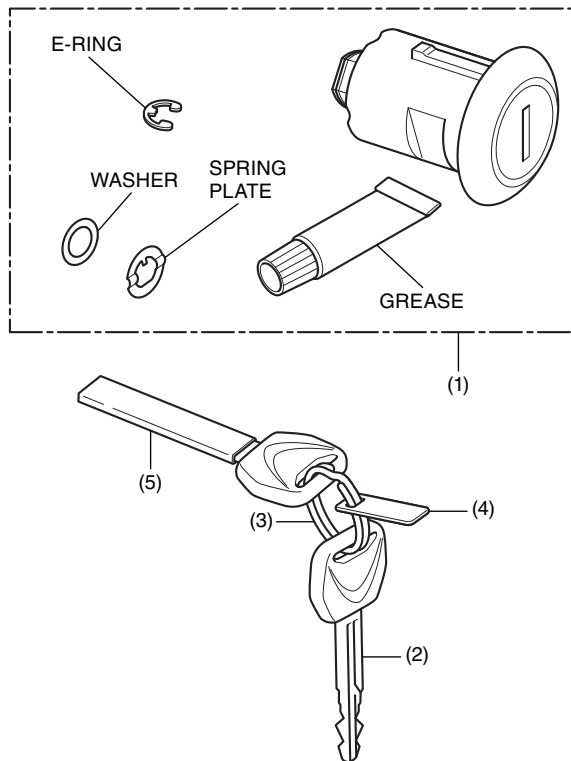
Honda Dealer: Please give a copy of these instructions to your customer.

PARTS LIST



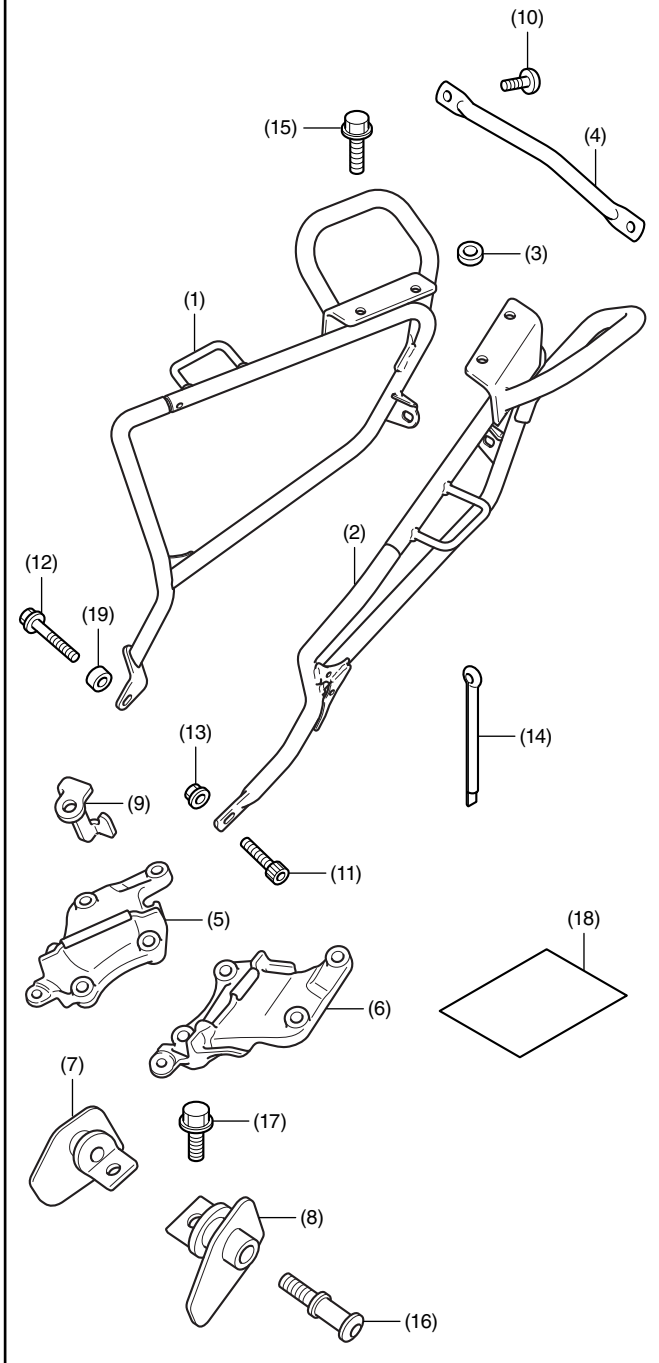
No.	Description	Qty
(1)	Right pannier	1
(2)	Left pannier	1
(3)	Key lock plate	2
(4)	Reflector stay	1
(5)	6 mm flange nut	2
(6)	6 mm flange bolt	3
(7)	Installation Instructions URL	1
(8)	Luggage band	2

PANNIER KEY SET Sold separately



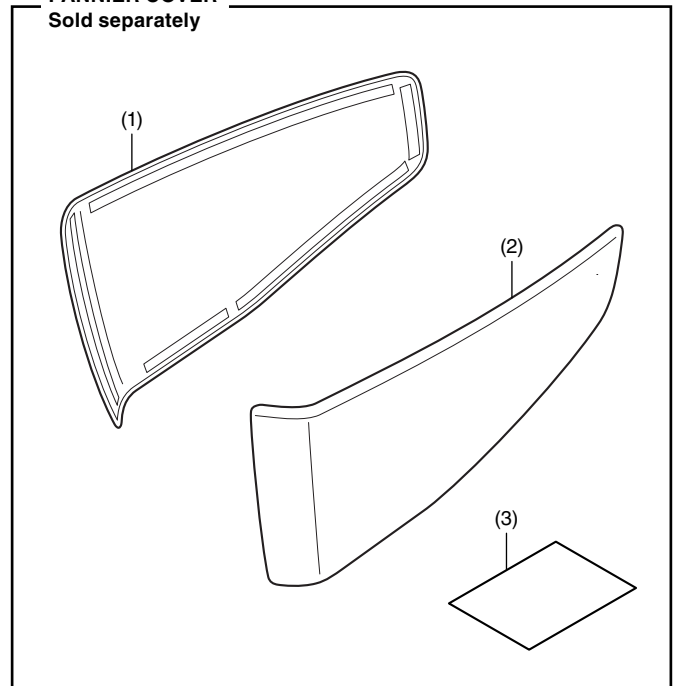
No.	Description	Qty
(1)	Key cylinder	2
(2)	Key	2
(3)	Key tie	1
(4)	Key number plate	1
(5)	Tube	1

PANNIER STAY B
Sold separately



No.	Description	Qty
(1)	Right pannier stay	1
(2)	Left pannier stay	1
(3)	Washer	2
(4)	Cross pipe	1
(5)	Right carrier stay	1
(6)	Left carrier stay	1
(7)	Right hook stay	1
(8)	Left hook stay	1
(9)	Helmet hook	1
(10)	8 mm socket bolt (short)	2
(11)	8 mm socket bolt (long)	1
(12)	8 mm flange bolt (long)	1
(13)	8 mm flange nut	3
(14)	Pin	1
(15)	8 mm flange bolt (short)	4
(16)	8 mm hook bolt	2
(17)	6 mm flange bolt	2
(18)	Installation Instructions URL	1
(19)	Collar	1

PANNIER COVER
Sold separately



No.	Description	Qty
(1)	Right pannier cover	1
(2)	Left pannier cover	1
(3)	Installation Instructions URL	1

TOOLS AND SUPPLIES REQUIRED

Socket (10 mm)

Ratchet

Open-end wrench (10 mm)

Long nose pliers

Isopropyl alcohol

Shop towel

Torque wrench

TORQUE CHART

Tighten all screws, bolts, and nuts to their specified torque values. Refer to the Service Manual for the torque values of the removed parts.

Item	N·m	kgf·m	lbf·ft
6 mm flange bolt and nut	12	1.2	9

MAXIMUM LOADING CAPACITY

- The weight of the cargo must not exceed the following maximum loading capacity:

Maximum Loading Capacity	
Right pannier	8.8 lb (4.0 kg)
Left pannier	8.8 lb (4.0 kg)

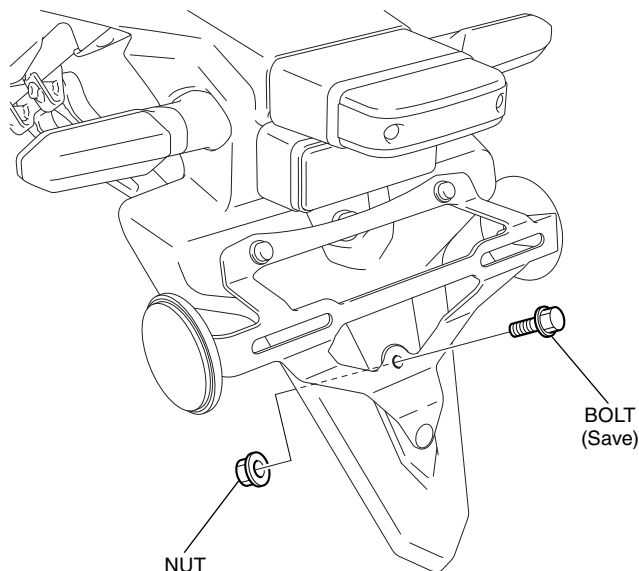
INSTALLATION

⚠ CAUTION

- To prevent burns, allow the engine, exhaust system, radiator, etc., to cool before installing the accessory.

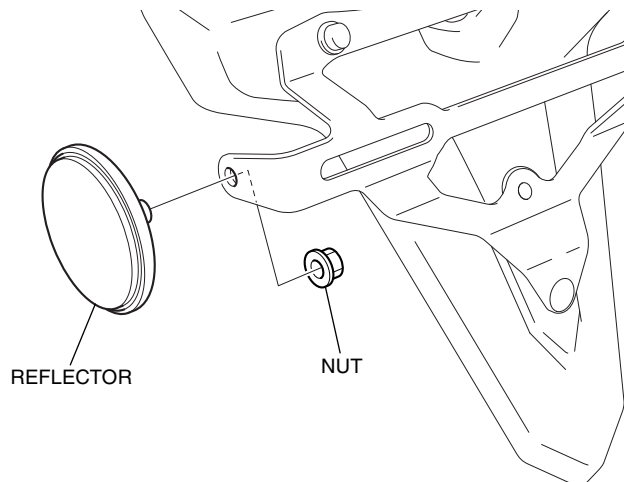
- Install the separately sold pannier stay B.
- Remove the parts as shown.

<Rear side>

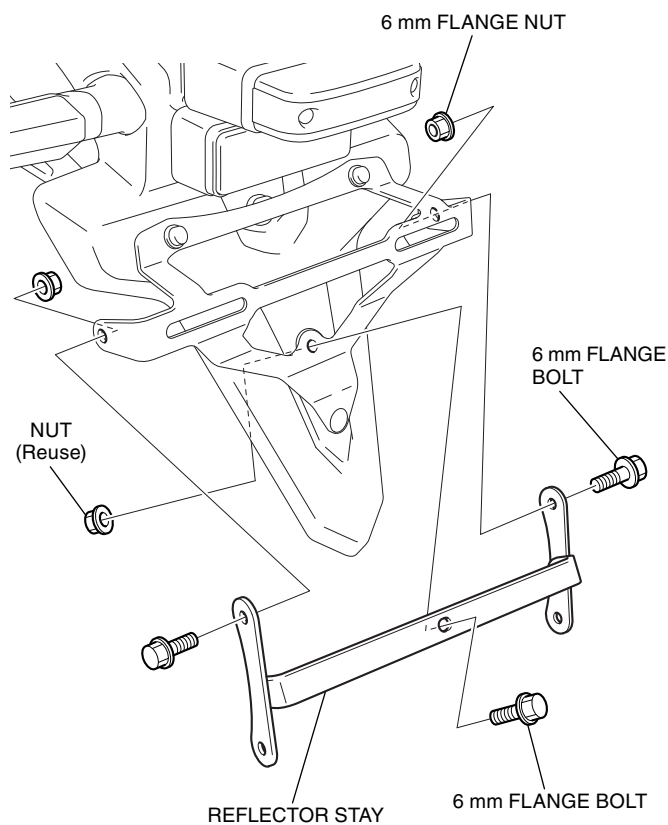


- Remove the reflector as shown.

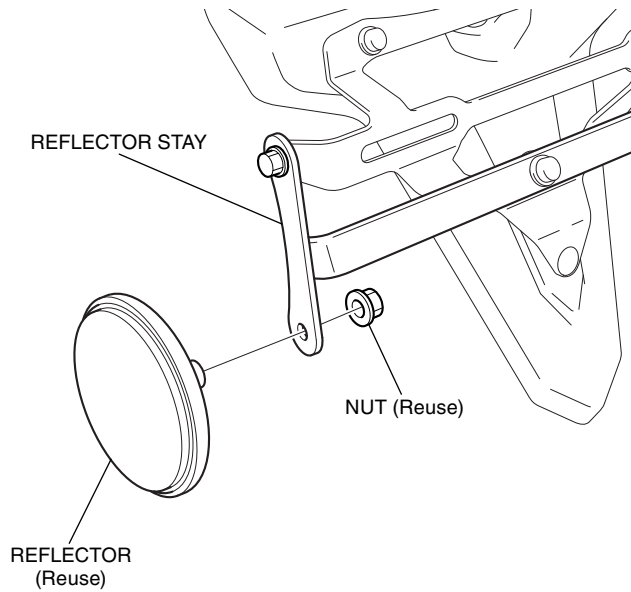
- Repeat on the right side.



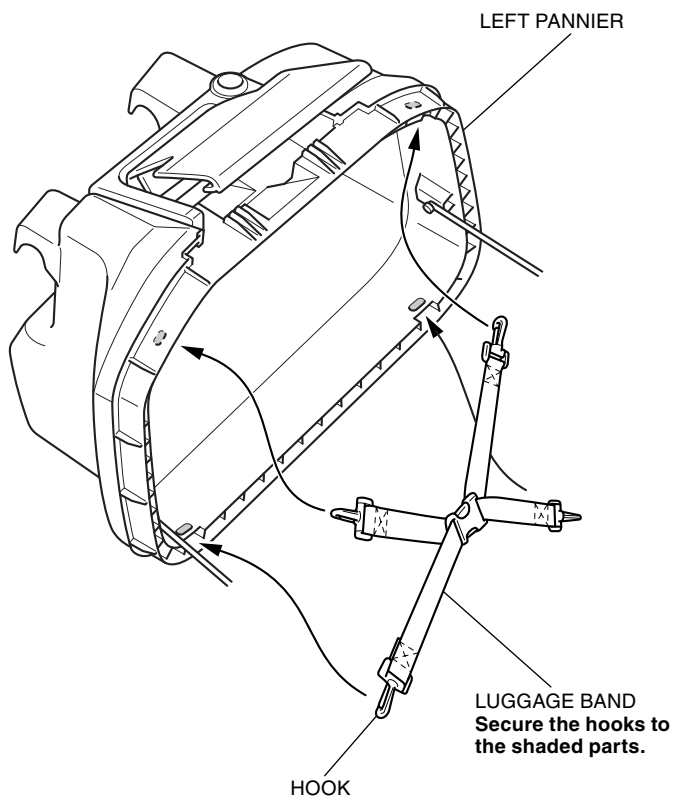
- Install the reflector stay as shown.



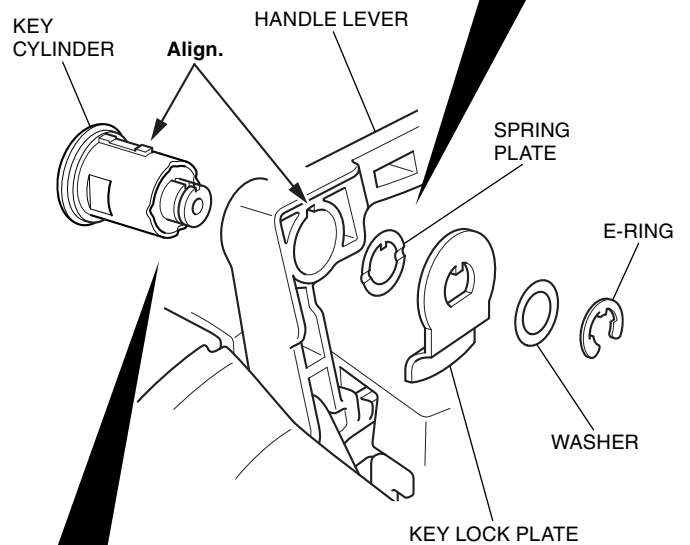
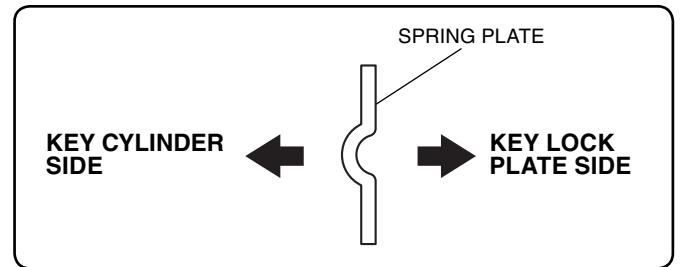
5. Install the reflector as shown.
- Repeat on the right side.



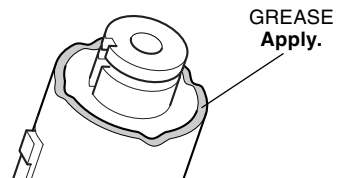
6. Install the luggage band as shown.
- Repeat on the right side.



7. Install the key cylinder on each pannier as shown.
- Only use the supplied grease.



Apply grease to the shaded area.



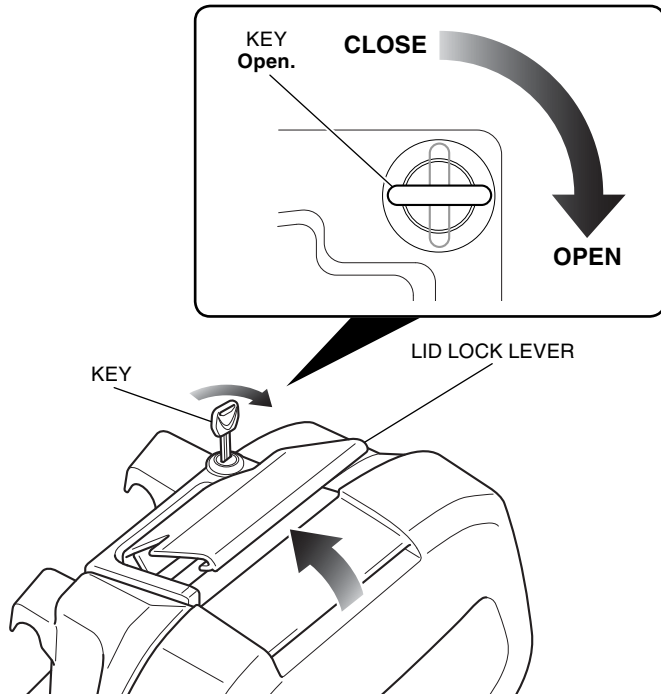
FOR USE OF THE PANNIERS

▲ CAUTION

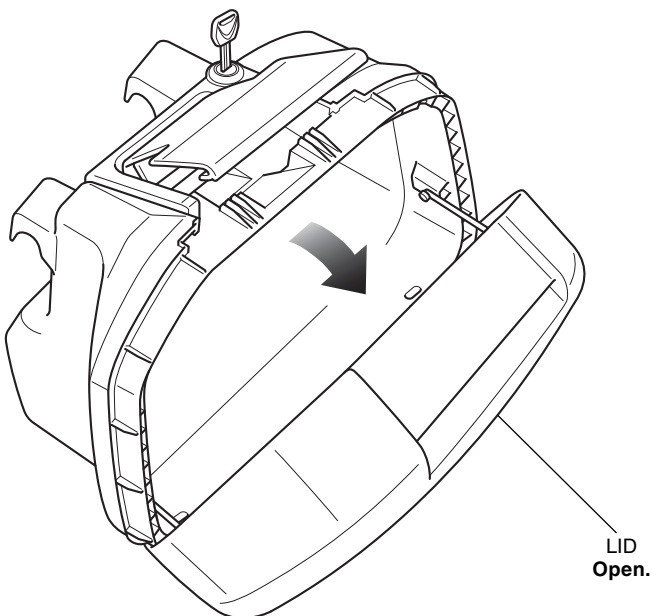
- To prevent burns, allow the engine, exhaust system, radiator, etc., to cool before installing and removing the accessory.

How to Open the Panniers

1. Install the key. Release the lock by turning the key clockwise and lift the lid lock lever as shown.



2. Open the lid as shown.

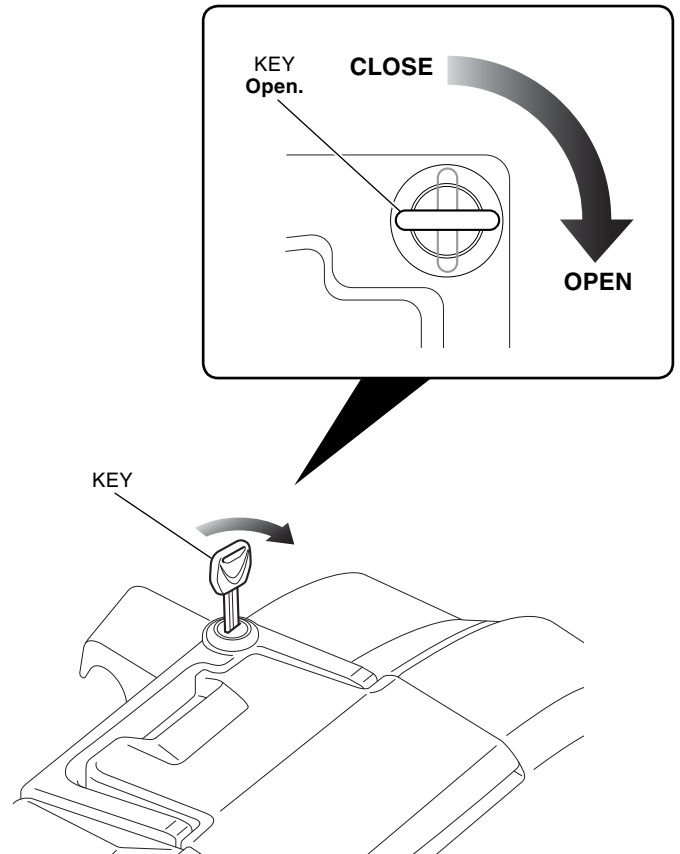


How to Close the Panniers

1. Close and lock the panniers in the reverse order of opening.
 - **Be careful not to have the stored item pinched when the pannier is closed.**

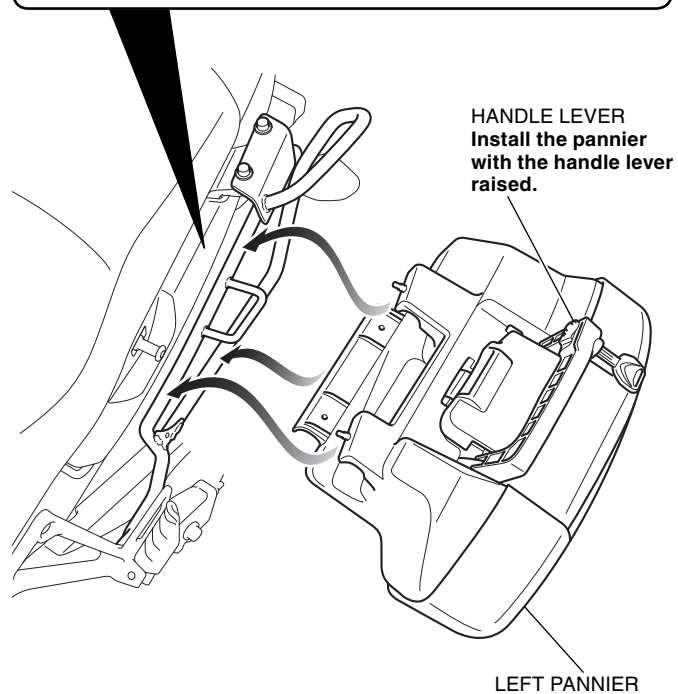
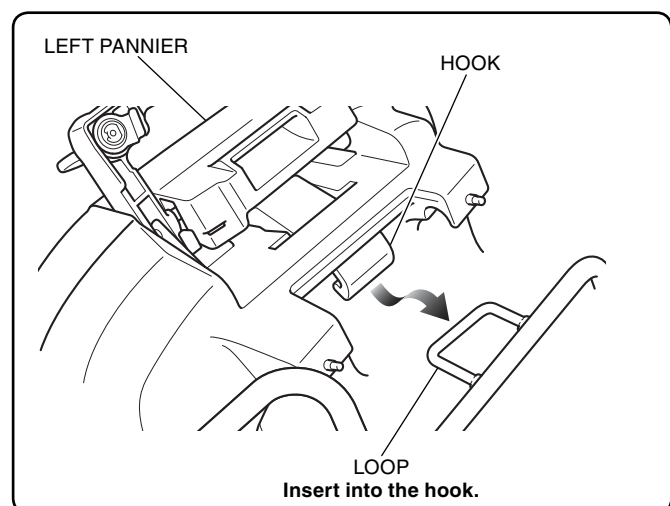
How to Install the Panniers

1. Install the key. Release the lock by turning the key clockwise.

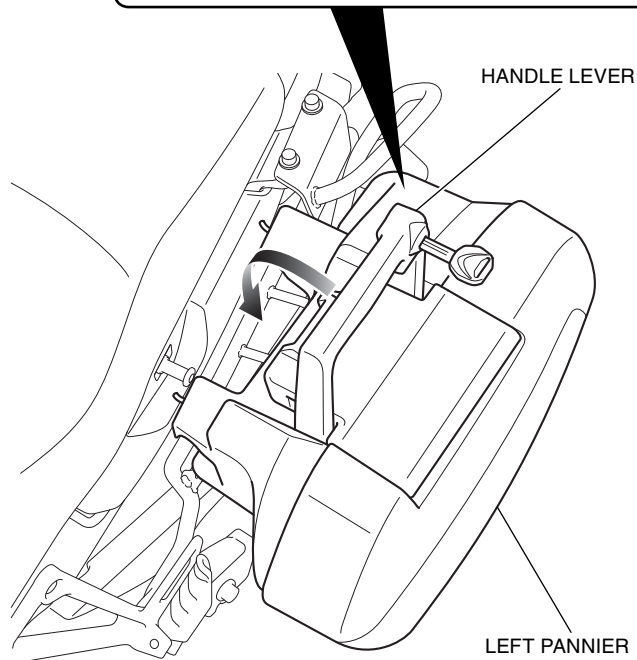
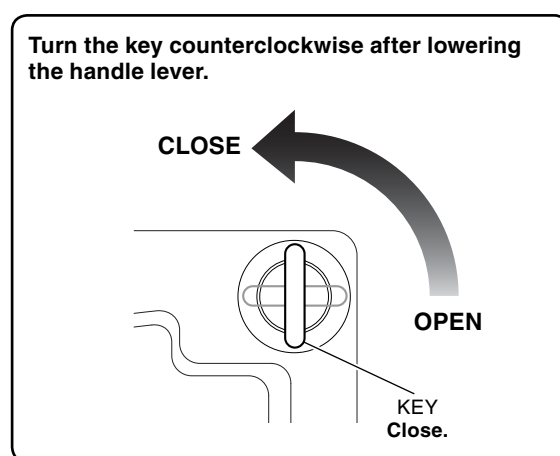


2. Install the left pannier as shown.

<Left side>



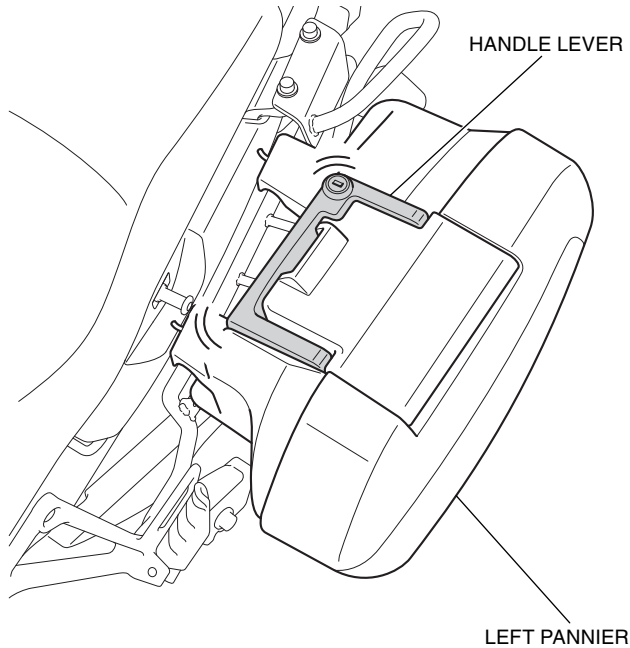
3. Lower the handle lever and lock the left pannier by turning the key counterclockwise as shown.



4. Remove the key. Be sure that the handle lever cannot be released and the left pannier is installed securely.

NOTICE:

- **The left pannier can come off during riding unless it is mounted securely.**



5. Install the right pannier in the same manner as the left side.

How to Remove the Panniers

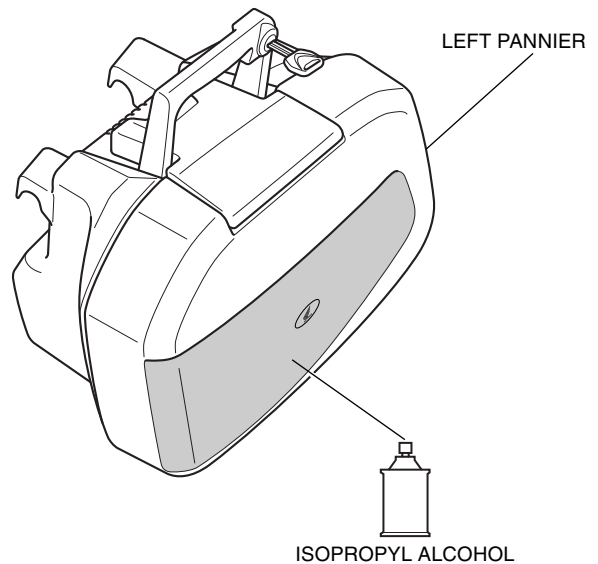
1. Remove the panniers in the reverse order of installation.

How to Install the Pannier Covers

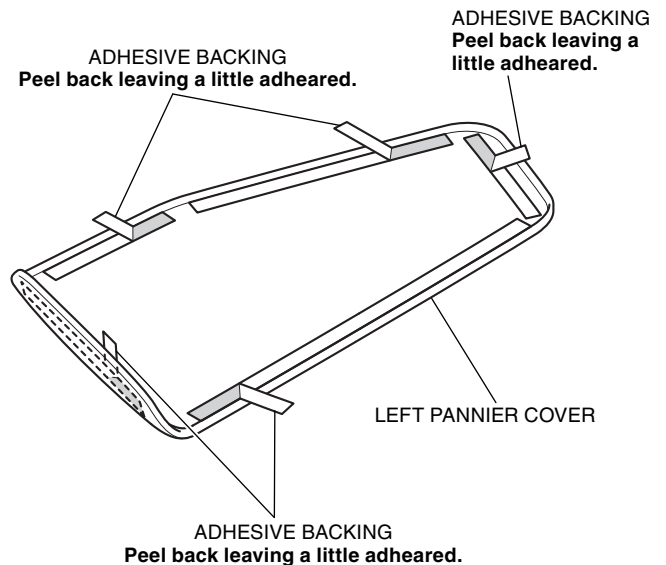
NOTE:

- Heat the bonding surfaces with a hair dryer if the ambient air temperature is below 70°F (21°C).
- The adhesive reaches full strength in 72 hours. Wait at least 24 hours before riding your motorcycle.

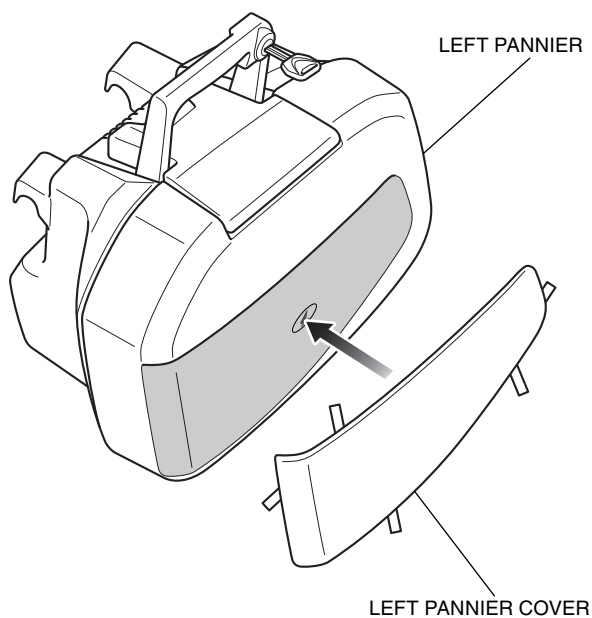
1. Remove the left pannier.
2. Clean the surface of the area shown using isopropyl alcohol.



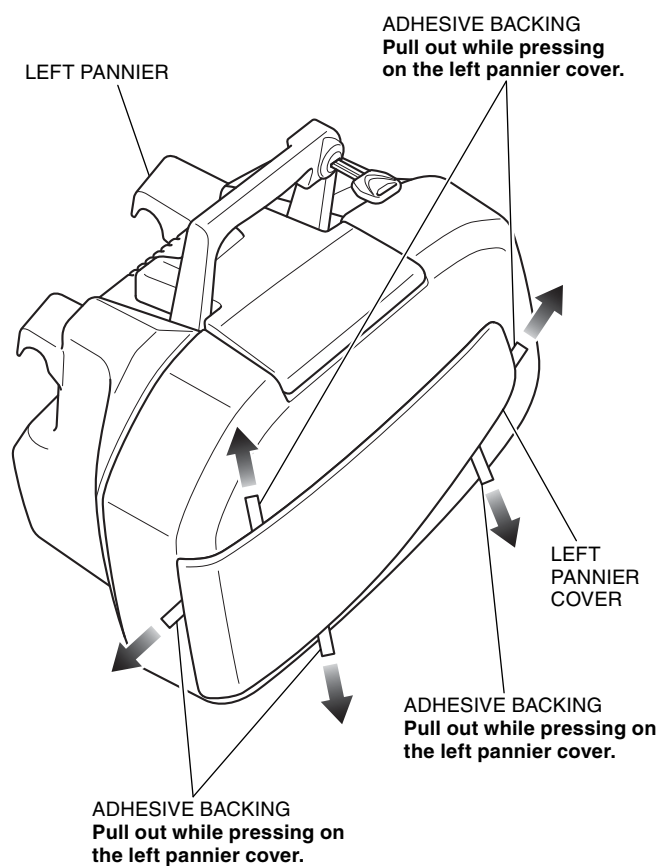
3. Peel off the adhesive backings on the left pannier cover as shown.



4. Attach the left pannier cover as shown.



5. Remove the adhesive backing as shown.



6. Apply adequate pressure to the attached left pannier cover.
7. Attach the right pannier cover in the same manner as the left side.