



# INSTALLATION INSTRUCTIONS

Accessory

ACCESSORY LED LIGHTS  
P/N 08F72-MFR-101A

Application

VT1300CX Fury  
VT1300CS Sabre

Publications No.

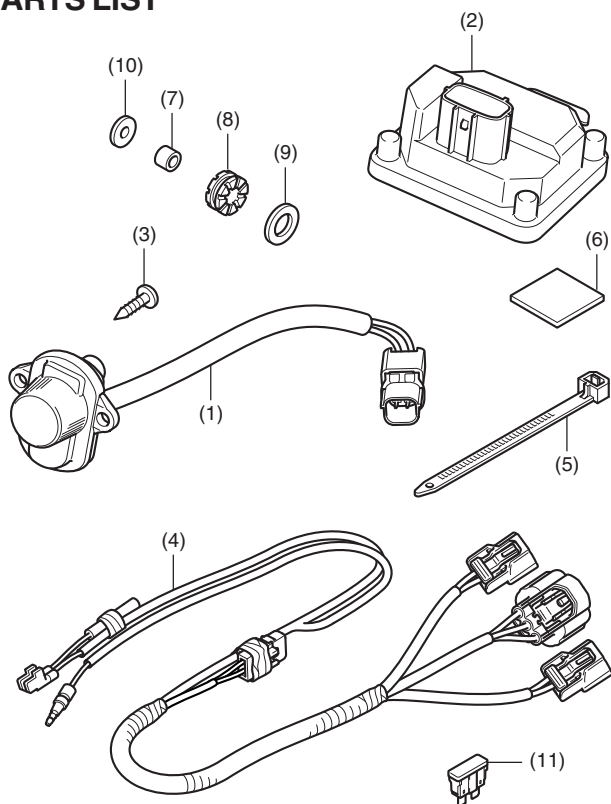
MII 12764-13250

Issue Date

Revised April 2010

**Honda Dealer: Please give a copy of these instructions to your customer.**

## PARTS LIST



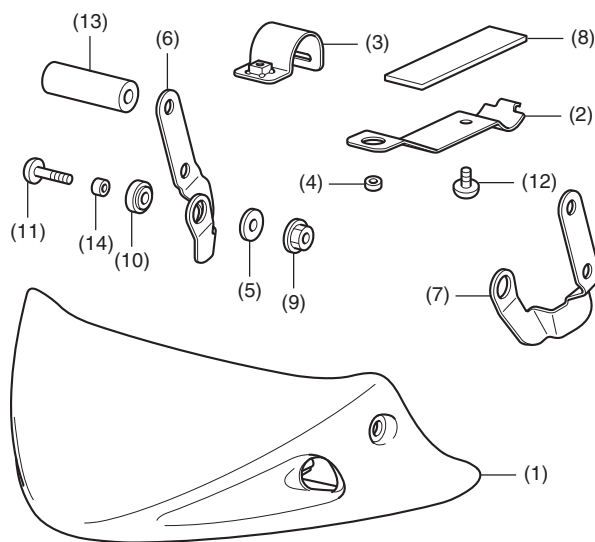
No.	Description	Qty
(1)	LED light	2
(2)	LED light unit	1
(3)	4 mm screw	4
(4)	Accessory light harness	1
(5)	Wire tie	5
(6)	Double-sided adhesive tape	1
(7)	Collar ( <b>VT1300CX only</b> )	3
(8)	Grommet ( <b>VT1300CX only</b> )	3
(9)	Washer (thin) ( <b>VT1300CX only</b> )	3
(10)	Washer (thick) ( <b>VT1300CX only</b> )	3
(11)	Fuse (10A)	1

**NOTE:** Must be used with the Front Spoiler accessory,  
P/N 08F72-MFR-100 or 08F72-MFW-100.

## FRONT SPOILER

Sold separately (P/N 08F72-MFR-100)

<VT1300CX>

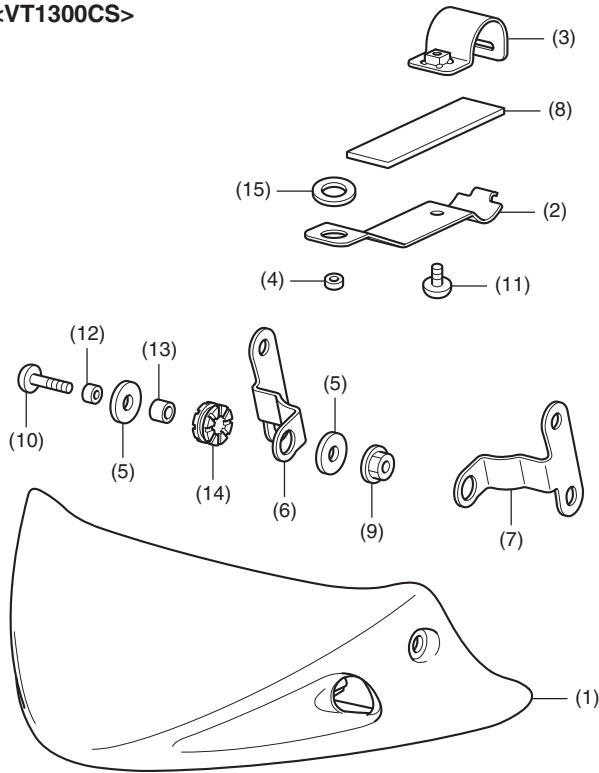


No.	Description	Qty
(1)	Front spoiler	1
(2)	Lower spoiler stay	1
(3)	Band	1
(4)	Collar (thin)	1
(5)	Washer	3
(6)	Right spoiler stay	1
(7)	Left spoiler stay	1
(8)	Rubber cushion	1
(9)	6 mm flange nut	3
(10)	Collar (large) ( <b>Not used.</b> )	3
(11)	6 mm screw (long)	3
(12)	6 mm screw (short)	1
(13)	Under cowl collar	4
(14)	Collar (thick)	2

## FRONT SPOILER

Sold separately (P/N 08F72-MFW-100)

<VT1300CS>



No.	Description	Qty
(1)	Front spoiler	1
(2)	Lower spoiler stay	1
(3)	Band	1
(4)	Collar (thin)	1
(5)	Washer (thick)	6
(6)	Right spoiler stay	1
(7)	Left spoiler stay	1
(8)	Rubber cushion	1
(9)	6 mm flange nut	3
(10)	6 mm screw (long)	3
(11)	6 mm screw (short)	1
(12)	Collar (thick)	2
(13)	Collar (large)	3
(14)	Grommet	3
(15)	Washer (thin)	1

## USE AND CARE INFORMATION

- Use a 2A and 10A fuse for replacement of the fuses in this accessory. Do not use any other fuse for replacement.
- If the accessory LED lights do not turn on, check the 2A in-line fuse on the accessory light harness and the 10A OP fuse in the fuse box.
- Check the accessory mounts frequently and retighten if necessary.

## TOOLS AND SUPPLIES REQUIRED

Socket (10 mm)  
Ratchet  
Box-end wrench (10 mm)  
Hex wrench (5 mm)  
Phillips ® screwdriver  
Side cutters  
Isopropyl alcohol  
Shop towel  
Torque wrench

## TORQUE CHART

Tighten all screws, bolts, and nuts to their specified torque values. Refer to the Service Manual for the torque values of the removed parts.

Item	N·m	kgf·m	lbf·ft
4 mm screw	1	0.1	0.7
6 mm screw	9	0.9	6.6
6 mm flange nut	12	1.2	9

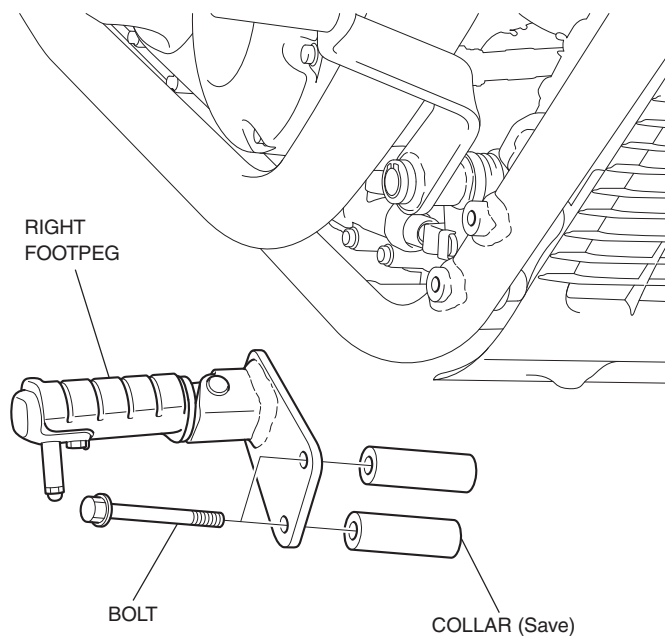
## INSTALLATION

### NOTE:

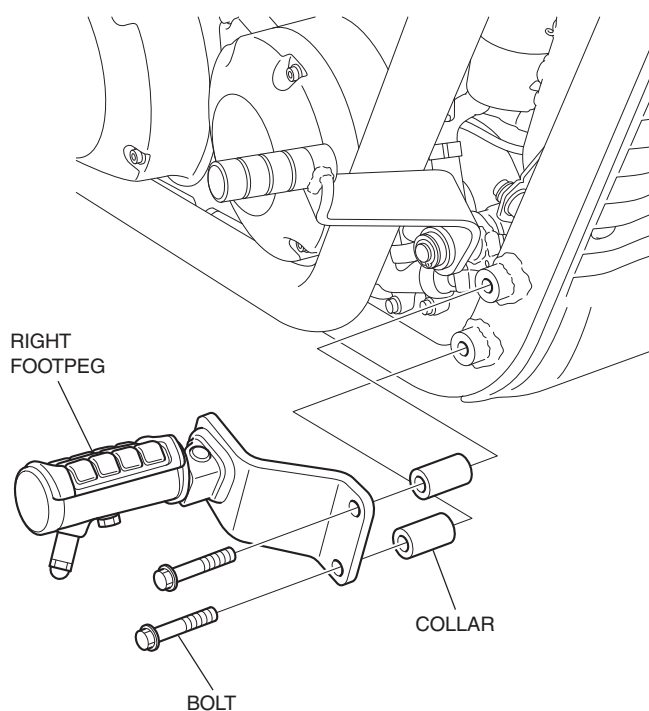
- The Front Spoiler (P/N 08F72-MFR-100 or 08F72-MFW-100) is required for installation of this accessory.
- Disconnect the negative battery cable before installing this accessory.
- The memories of the trip meter and clock will be erased when you disconnect the battery. Reset the clock after reconnecting the battery.
- Trim the excess ends of the wire ties after attaching them to the wire harnesses.
- Allow the engine, cooling system, and exhaust system to cool before installing the accessory LED.

1. Remove the right footpeg as shown.

<VT1300CX>



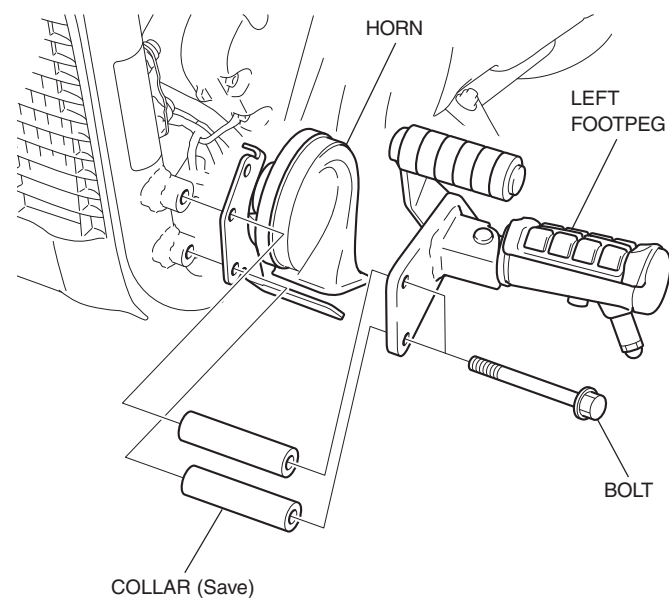
<VT1300CS>



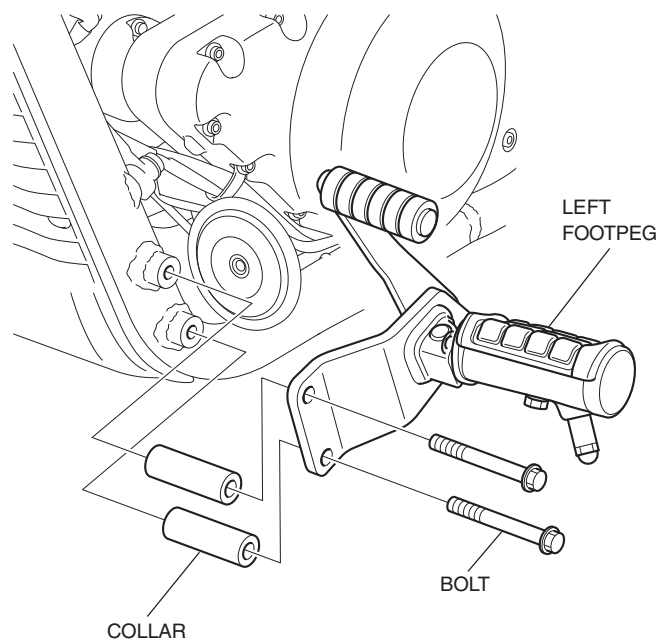
2. Remove the left footpeg as shown.

<VT1300CX>

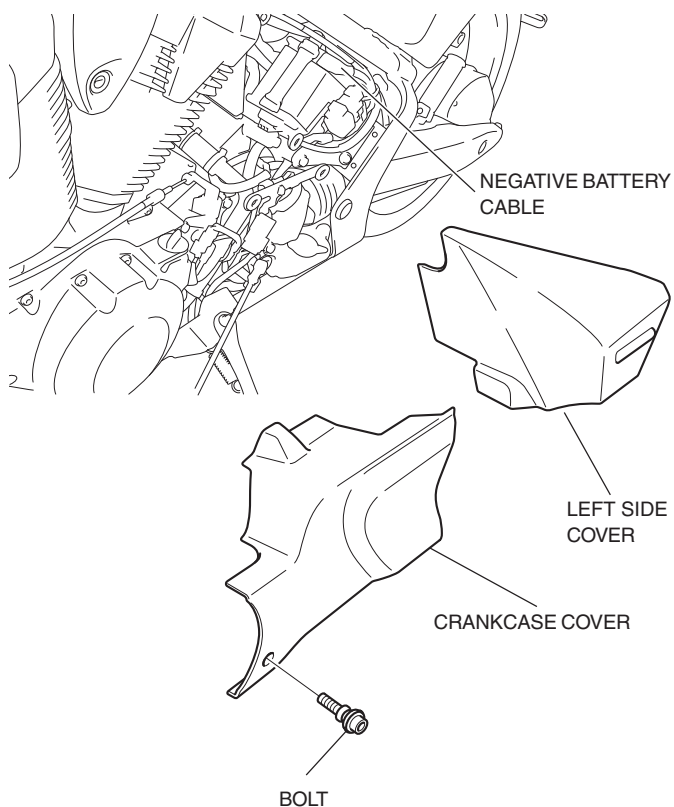
- Be careful not to disconnect the horn.



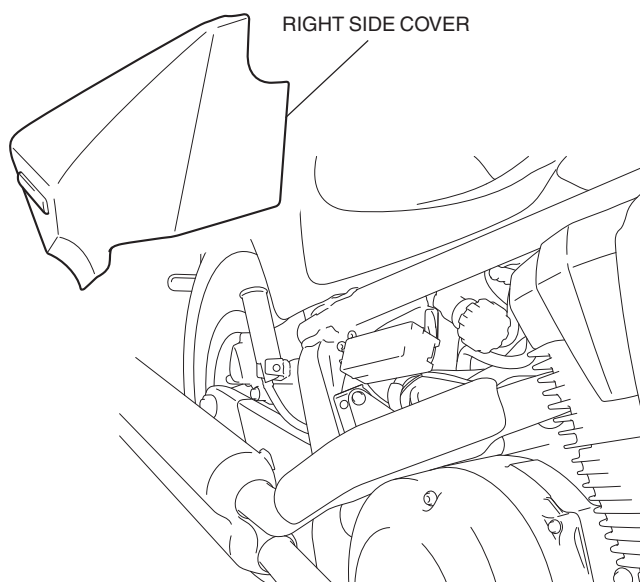
<VT1300CS>



3. Remove the left side cover and crankcase cover as shown. Disconnect the negative (-) cable from the battery.

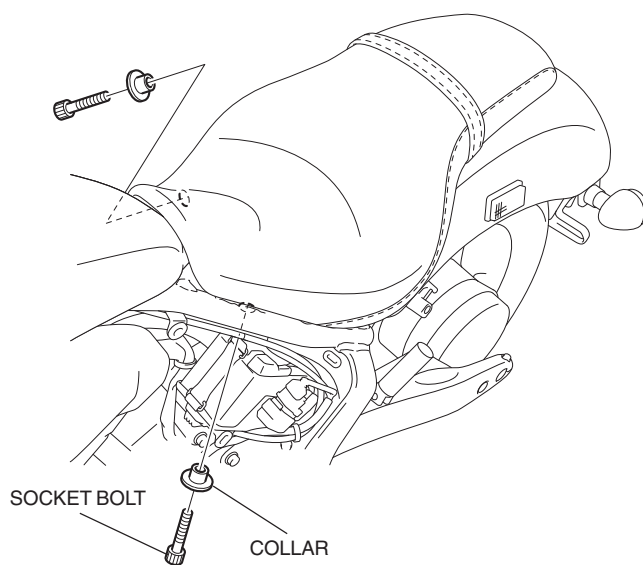


4. Remove the right side cover as shown.



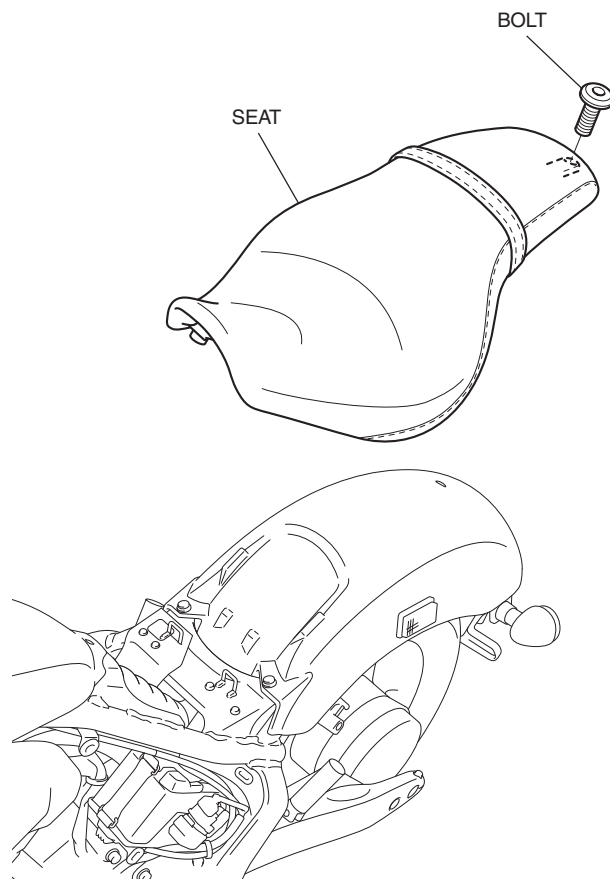
5. Remove the seat bolts as shown.

- **Applies to VT1300CS only.**



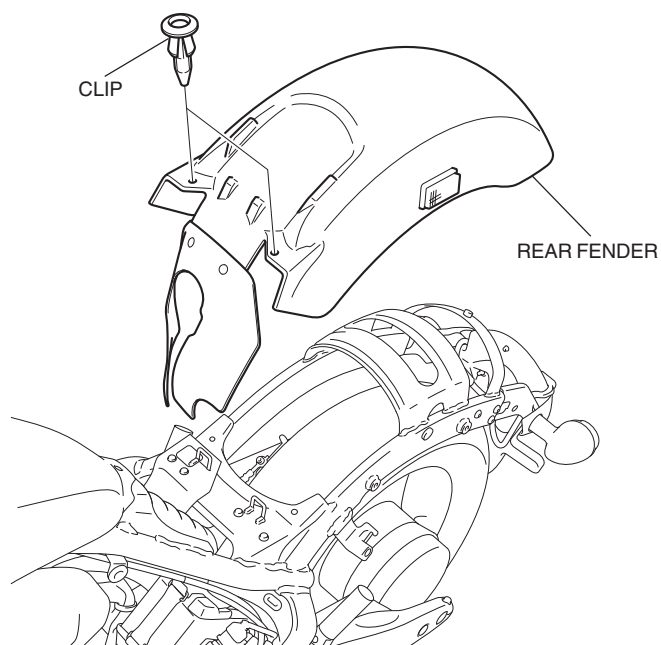
6. Remove the seat from the motorcycle as shown.

- **Applies to VT1300CS only.**



7. Remove the rear fender as shown.

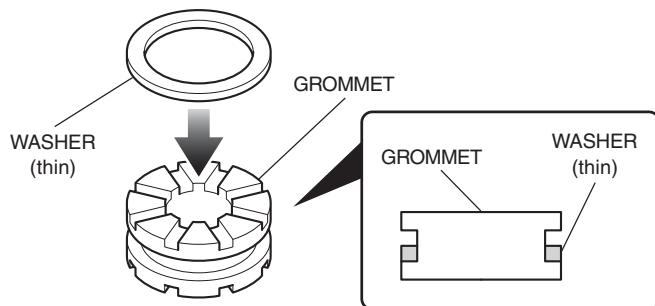
- **Applies to VT1300CS only.**



8. Install the thin washer on the grommet as shown.

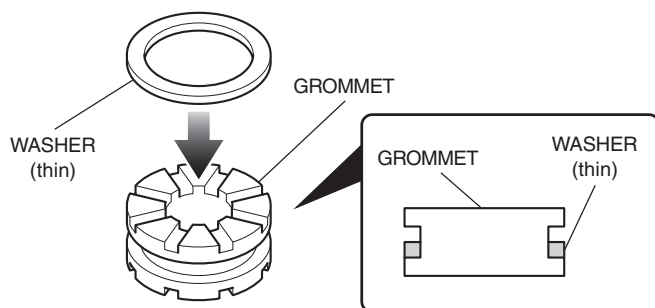
<VT1300CX>

- **Install the three thin washers to the three grommets.**

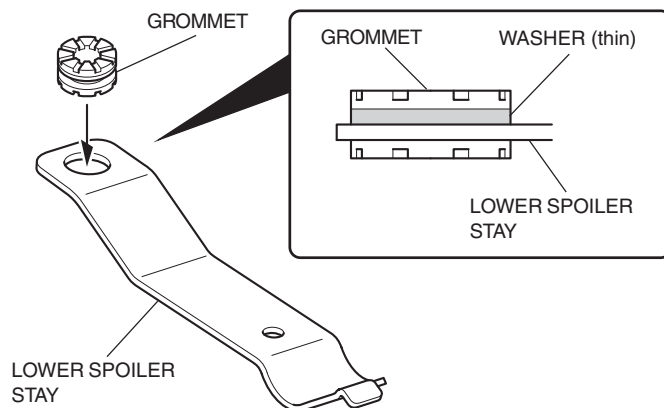


<VT1300CS>

- **Install the thin washer to the grommet.**

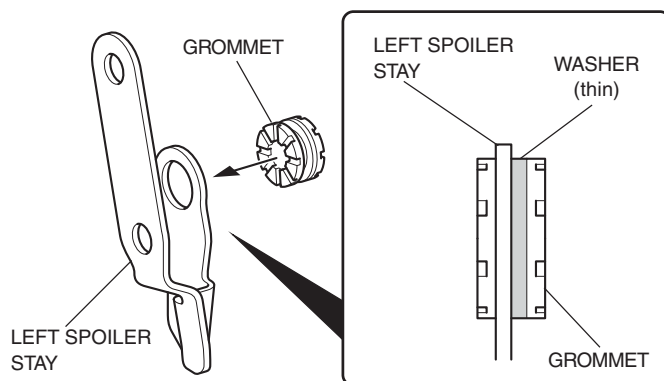


9. Install the grommet to the lower spoiler stay.

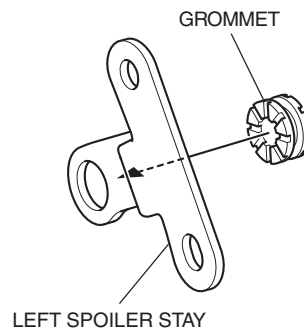


10. Install the grommet to the left spoiler stay.

<VT1300CX>

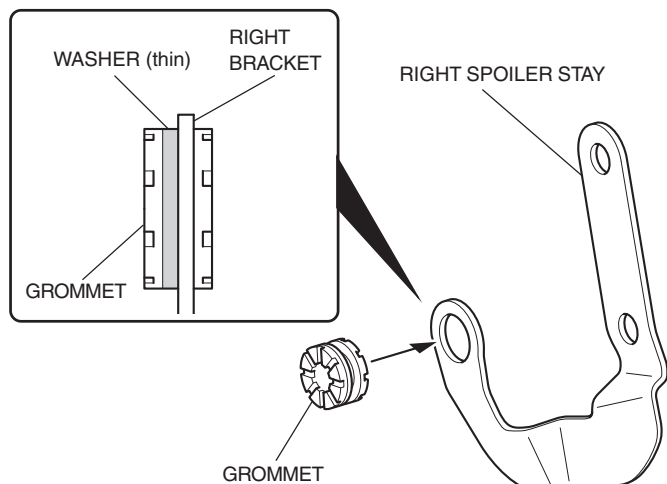


<VT1300CS>

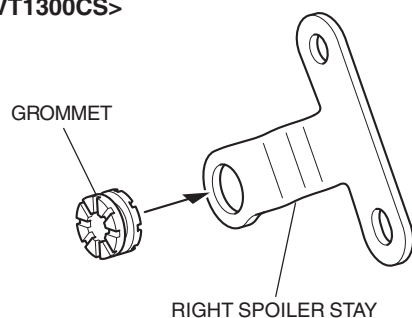


11. Install the grommet to the right spoiler stay.

<VT1300CX>



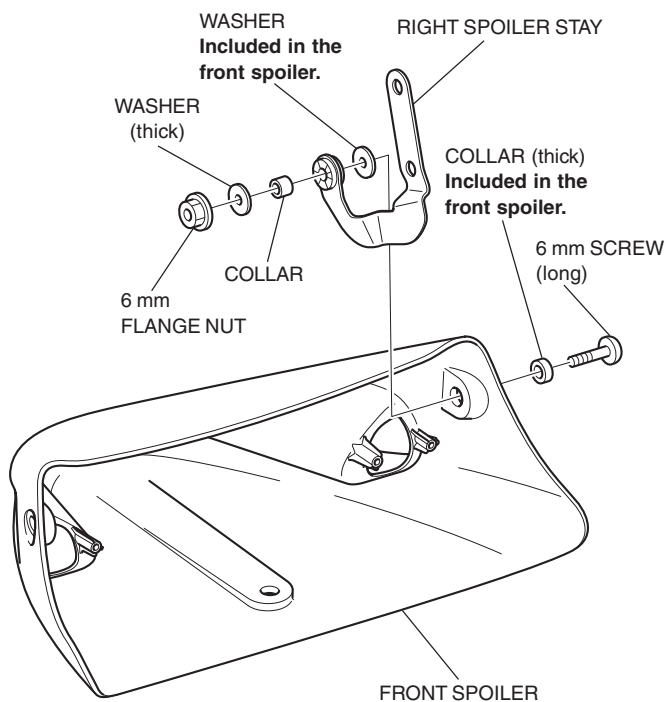
<VT1300CS>



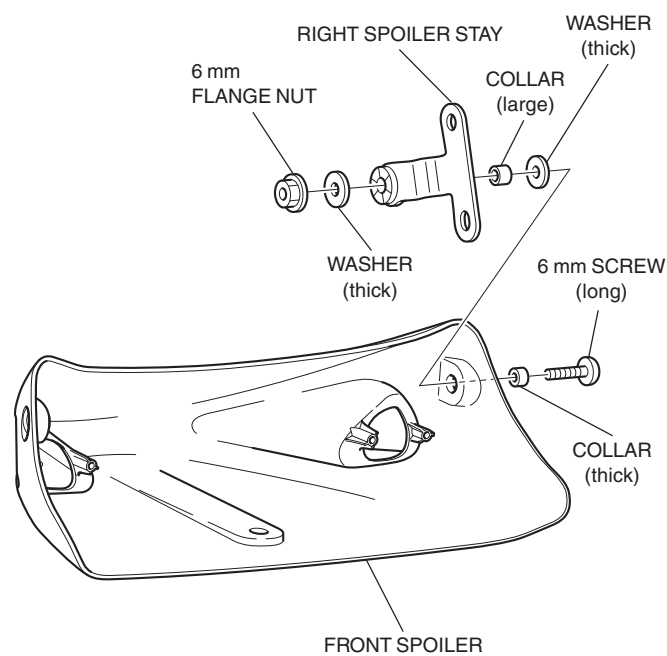
12. Install the right and left spoiler stays as shown.

- Repeat on the left side.

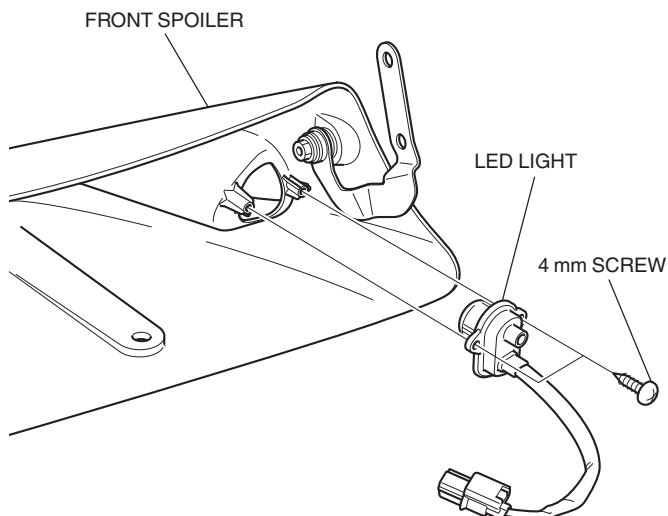
<VT1300CX>



<VT1300CS>

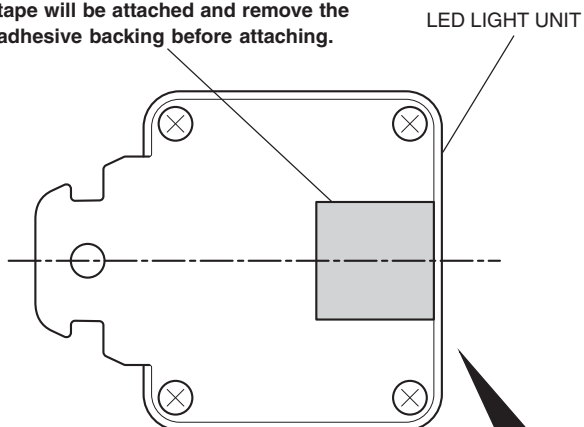


13. Install the LED light to the front spoiler as shown.  
Repeat on the other side.

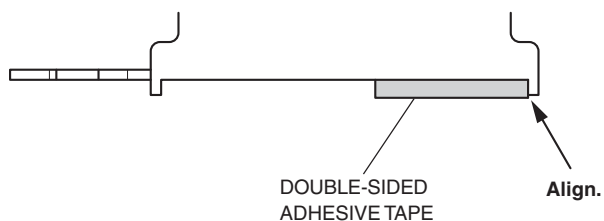


14. Attach the double-sided adhesive tape to the LED light unit as shown.

**DOUBLE-SIDED ADHESIVE TAPE**  
Using isopropyl alcohol, thoroughly clean the area where the double-sided adhesive tape will be attached and remove the adhesive backing before attaching.

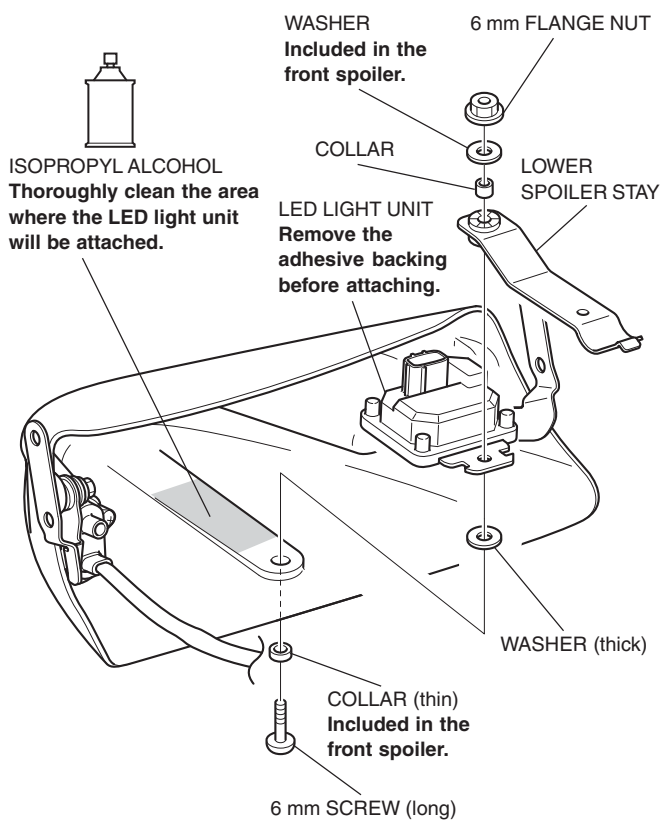


**Attach the double-sided adhesive tape in the position shown.**

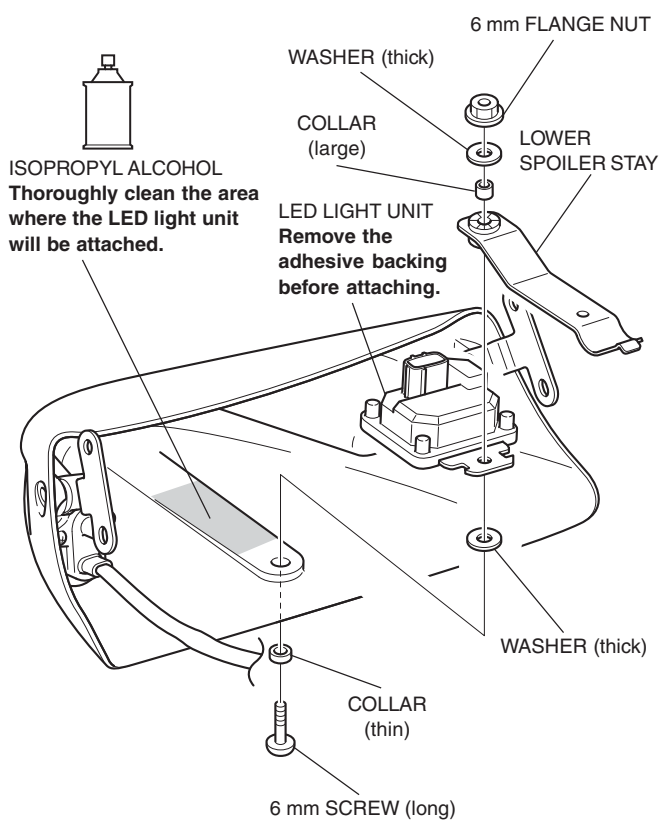


15. Install the lower spoiler stay and LED light unit as shown.

<VT1300CX>

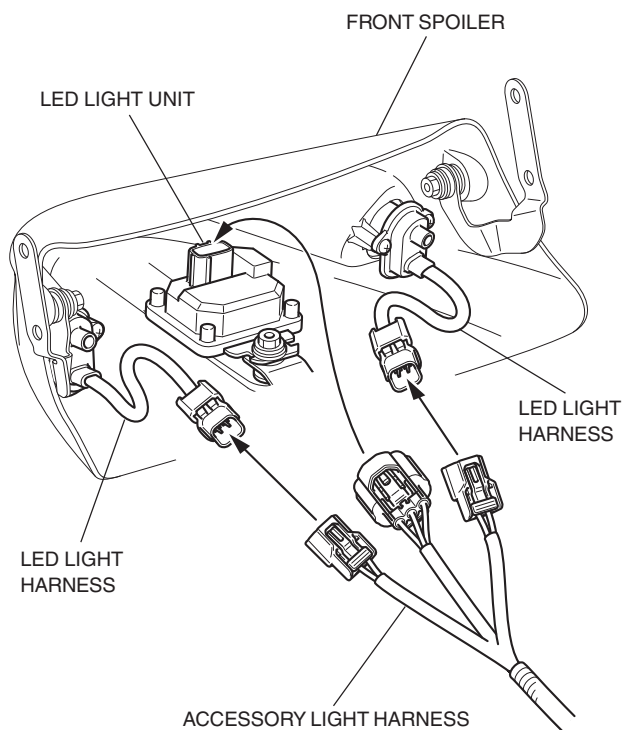


<VT1300CS>

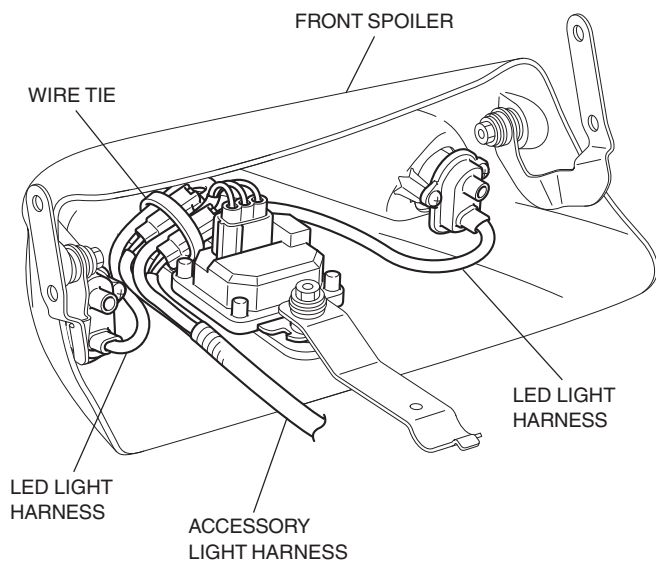




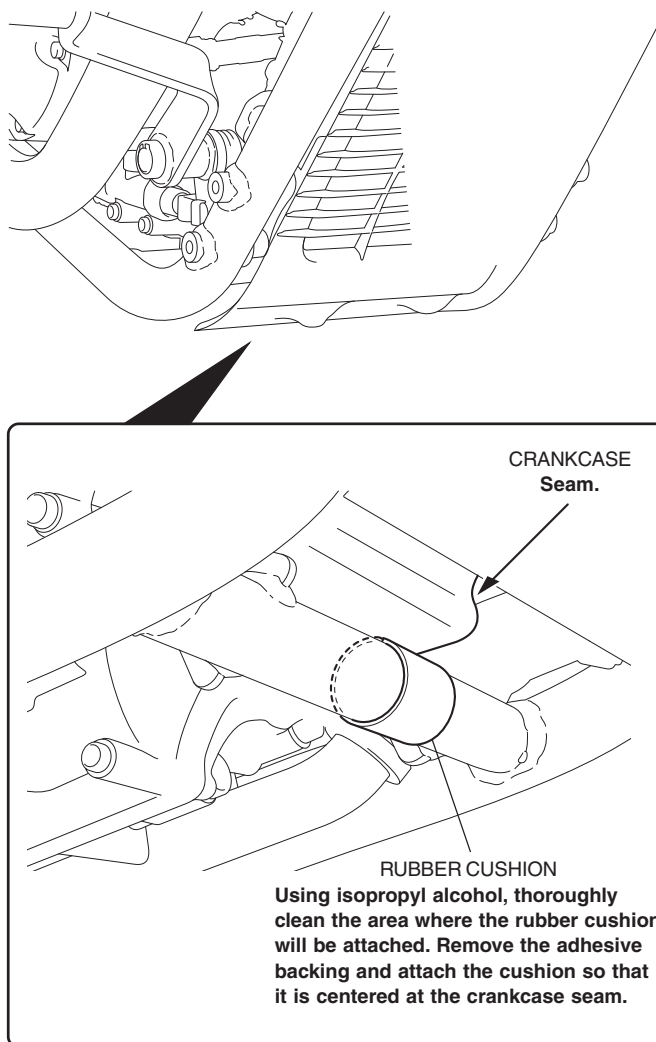
16. Connect the accessory light harness as shown.



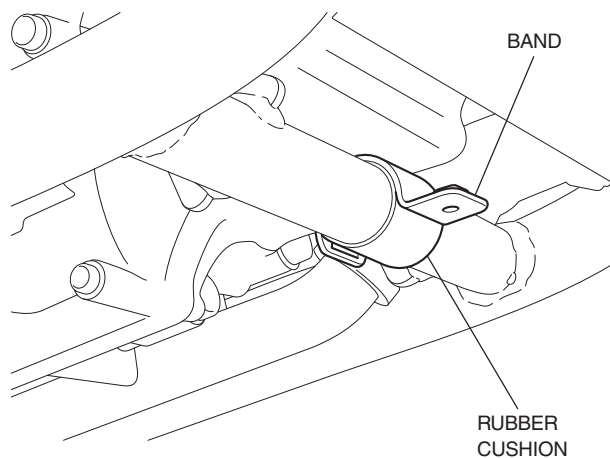
17. Secure the connected accessory light harness with a wire tie as shown.



18. Attach the rubber cushion in the position shown.

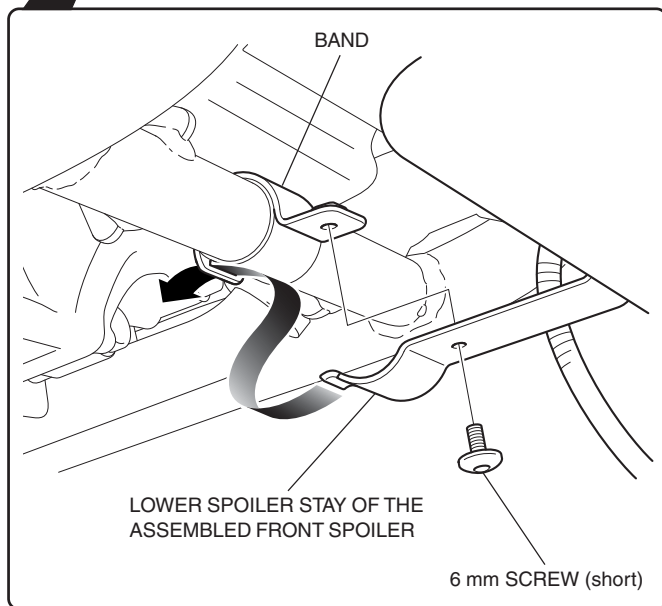
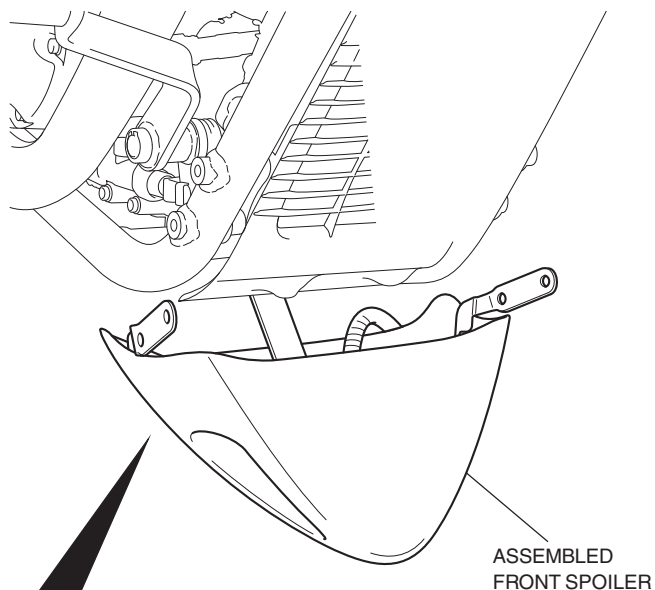


19. Install the band over the rubber cushion.

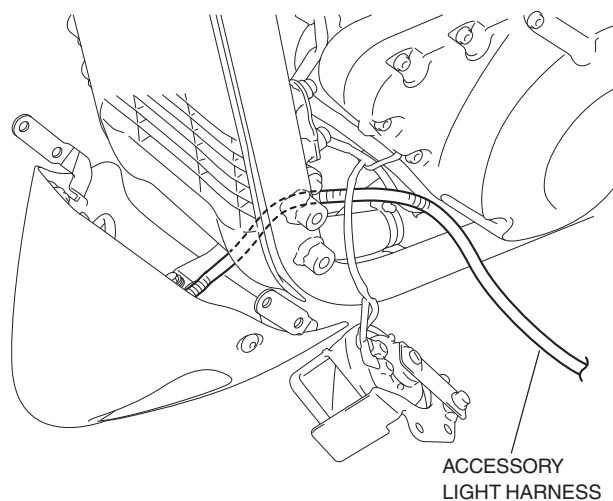




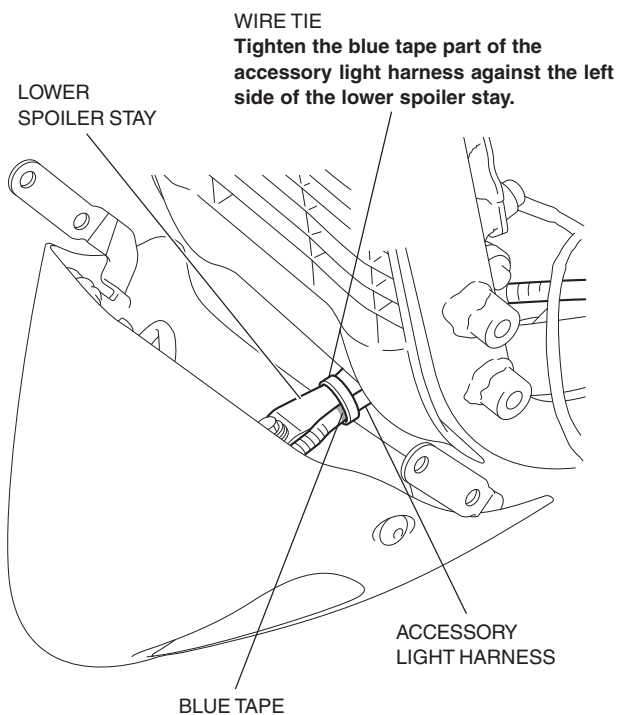
20. Loosely install the lower spoiler stay of the assembled front spoiler.



21. Route the accessory light harness as shown.

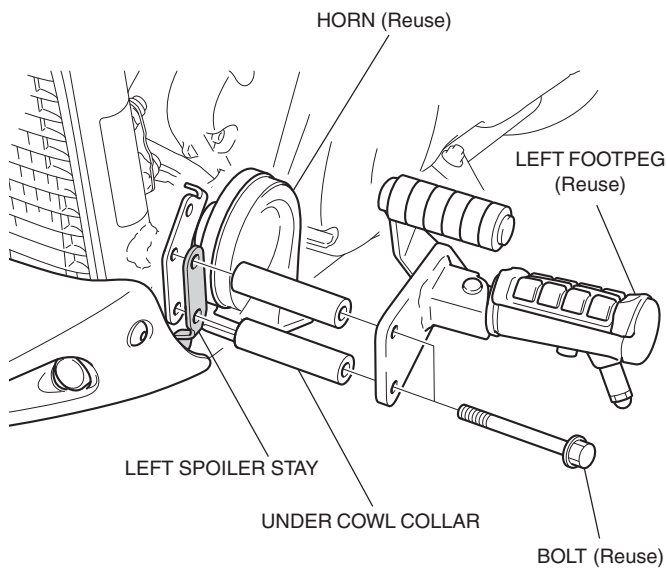


22. Secure the accessory light harness with a wire tie.

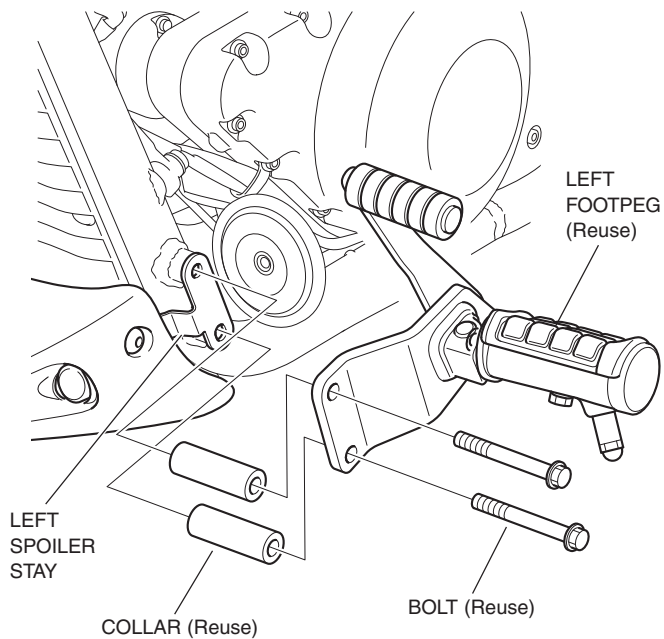


23. Reinstall the left footpeg, trapping the left spoiler stay, as shown.

<VT1300CX>

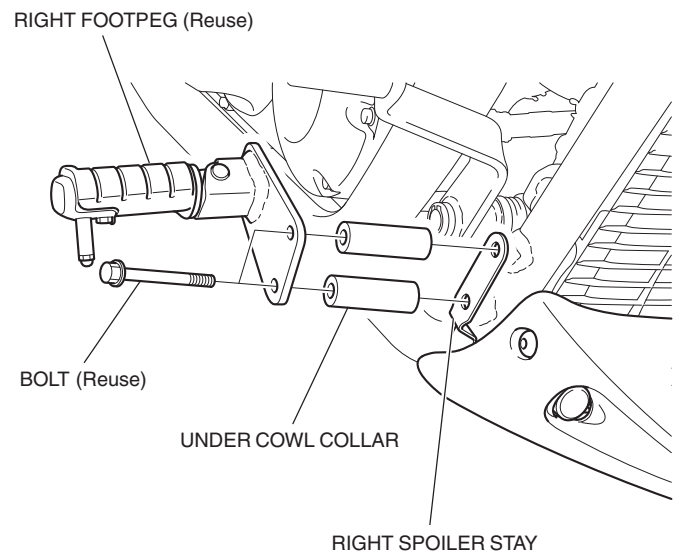


<VT1300CS>

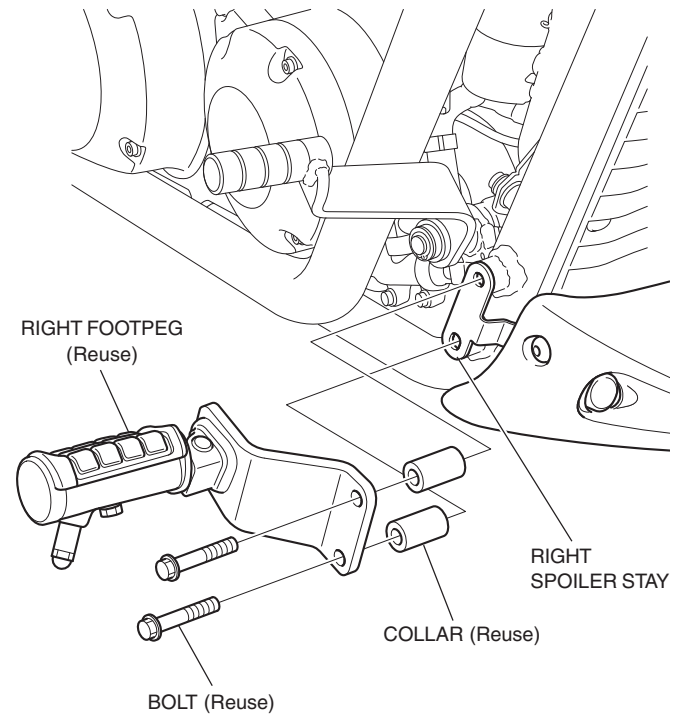


24. Reinstall the right footpeg, trapping the right spoiler stay, as shown.

<VT1300CX>

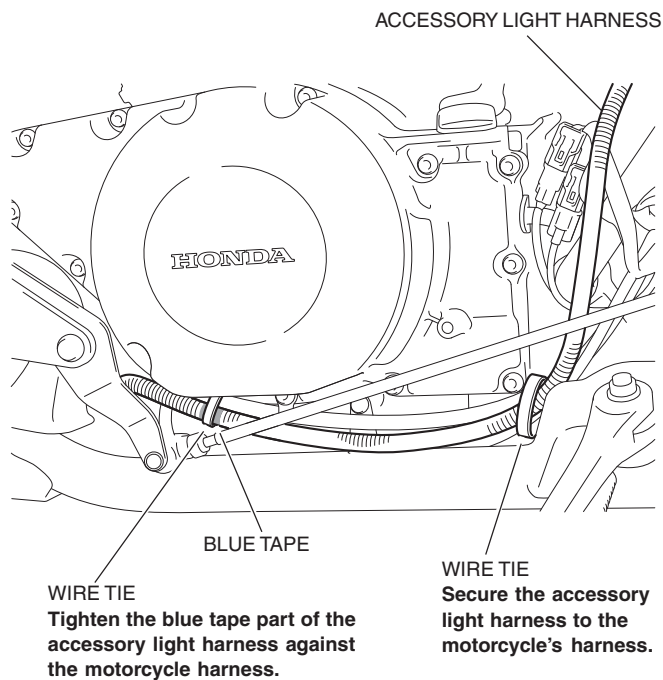


<VT1300CS>

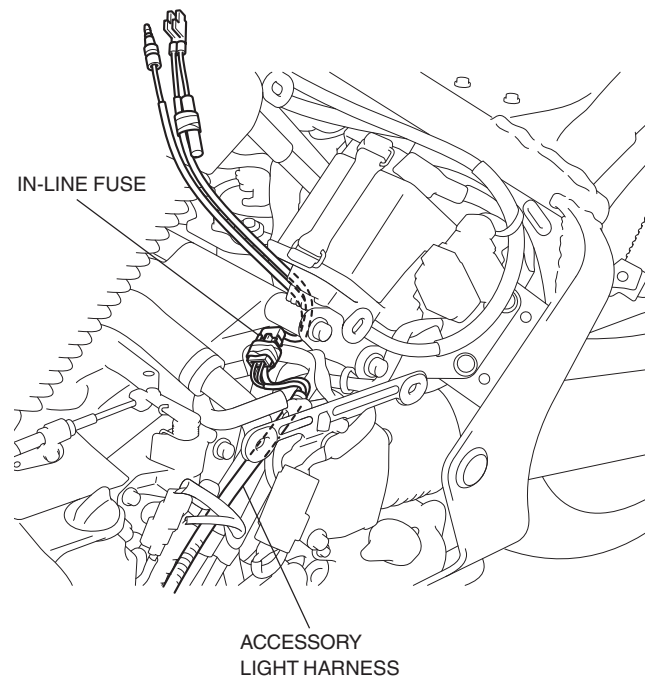


25. Tighten the loosely installed hardware to the torque values specified in the torque chart and Service Manual.

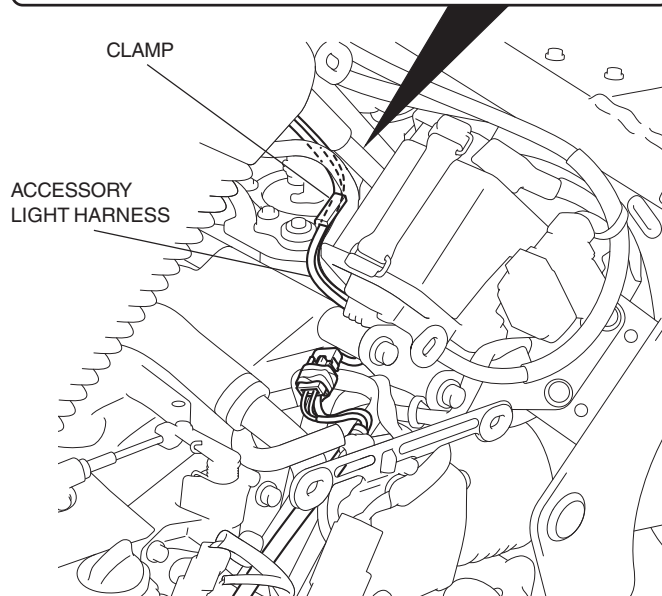
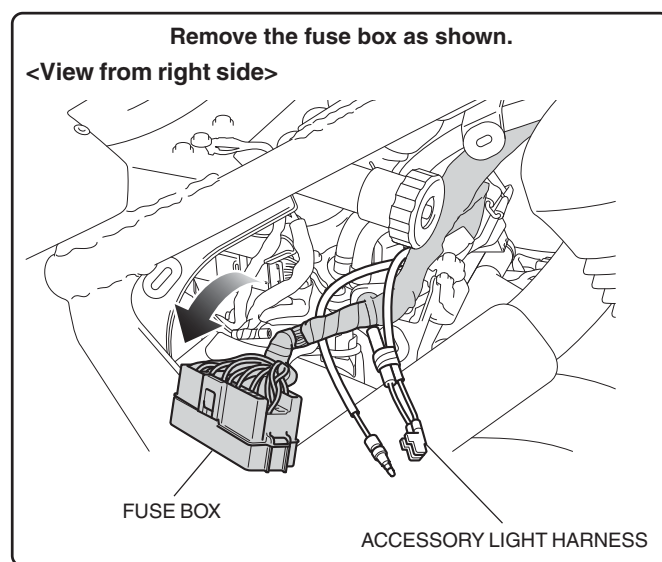
26. Route the accessory light harness and secure it using a wire tie as shown.



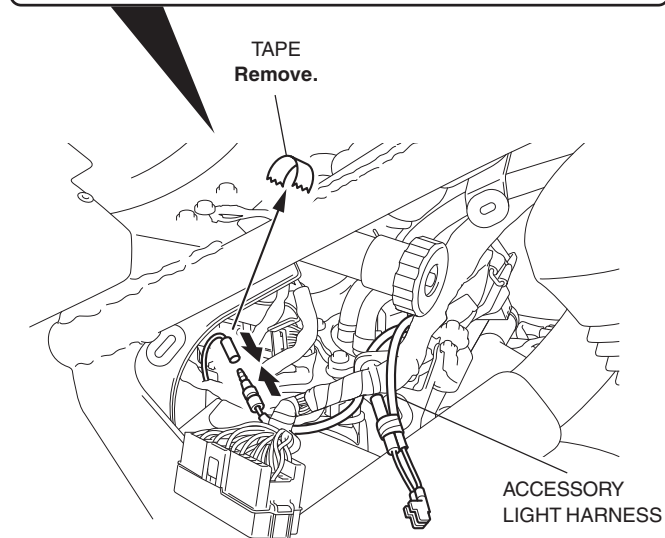
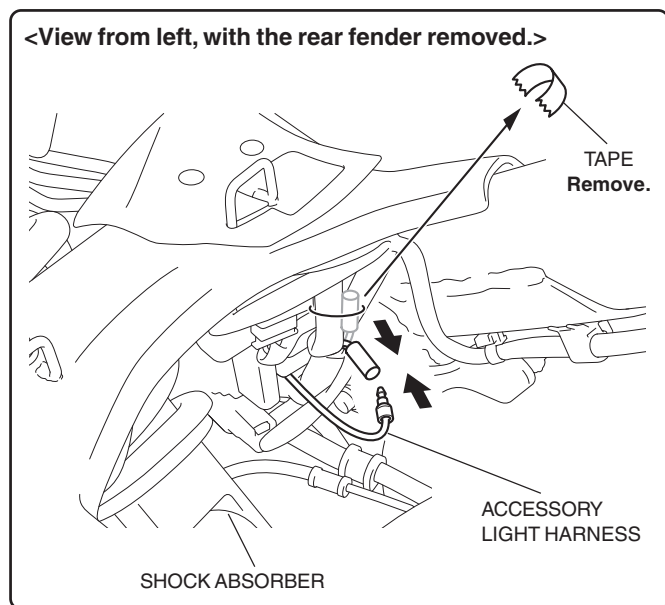
27. Route the accessory light harness as shown.



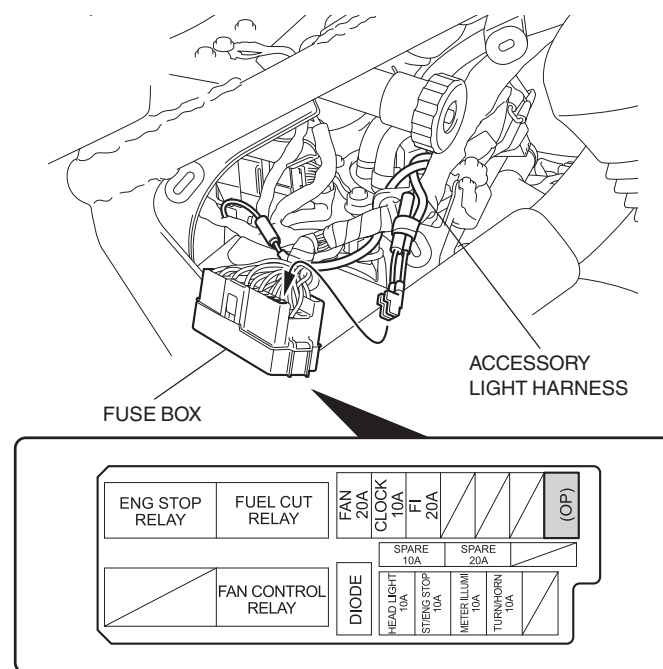
28. Pass the accessory light harness through the clamp.



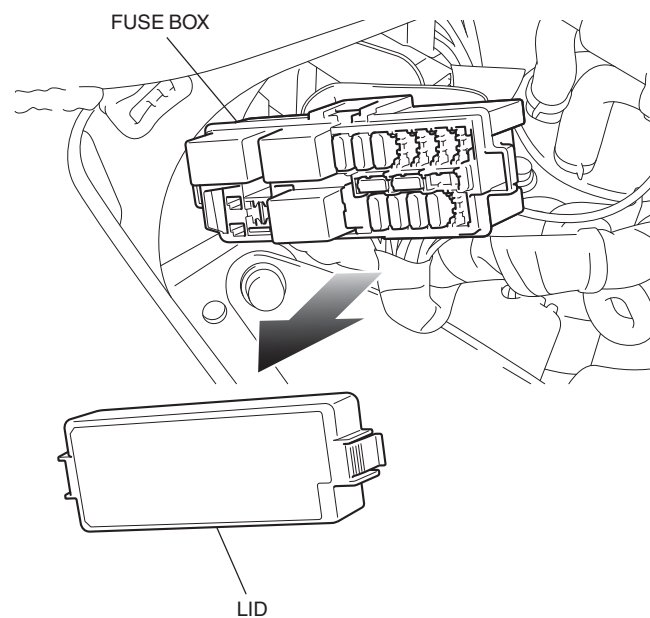
29. Connect the accessory light harness.



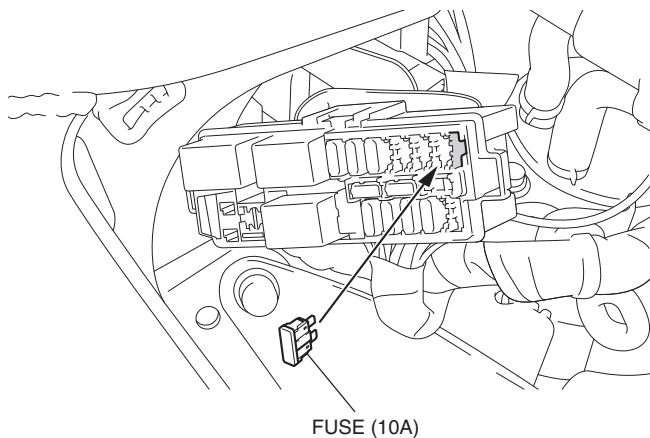
30. Connect the terminal of the accessory light harness to the OP position of the fuse box as shown. Reinstall the fuse box.



31. Remove the fuse box lid.

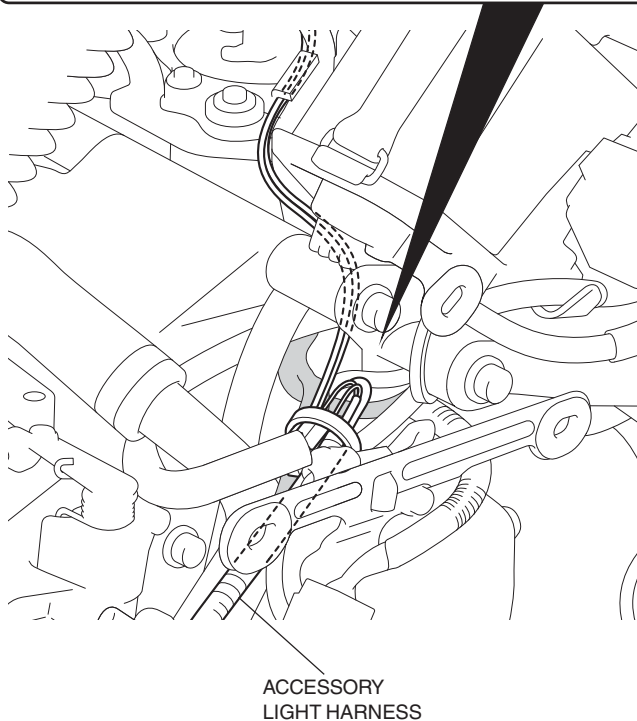
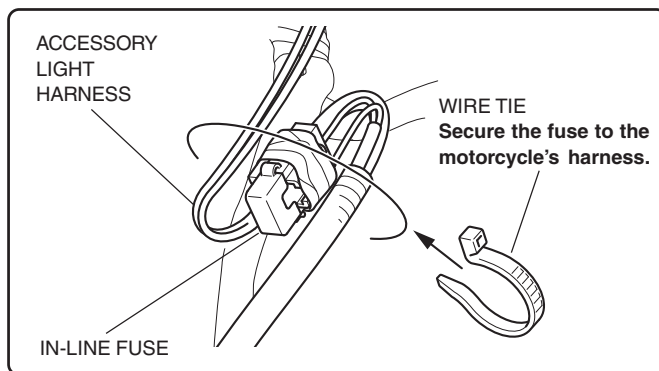


32. Install the 10A fuse in the OP position as shown.



33. Reinstall the fuse box lid.

34. Secure the in-line fuse using a wire tie.



35. Reconnect the negative battery cable and reinstall the motorcycle parts in reverse order of their removal.

36. Turn on the ignition switch and confirm that the LED lights works properly.